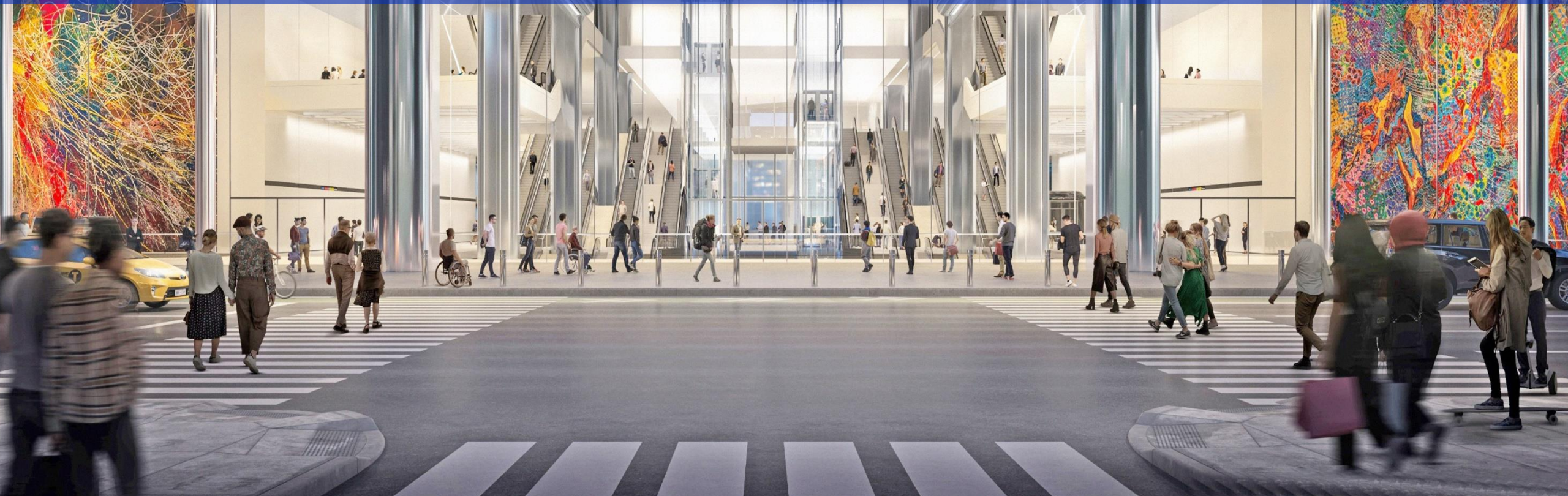


# Midtown Bus Terminal Replacement Project

Community Construction Task Force Meeting #2 – 27 February 2025



# Agenda

Community Construction Taskforce Meeting #2  
27 February 2025

I. Welcome

II. Phase 1A Dyer Deck Overs Planned Work

III. Right of Entry – 100 Ft Buffer Zone

IV. Discussion and Q&A



# **Phase 1A Dyer Deck Overs**

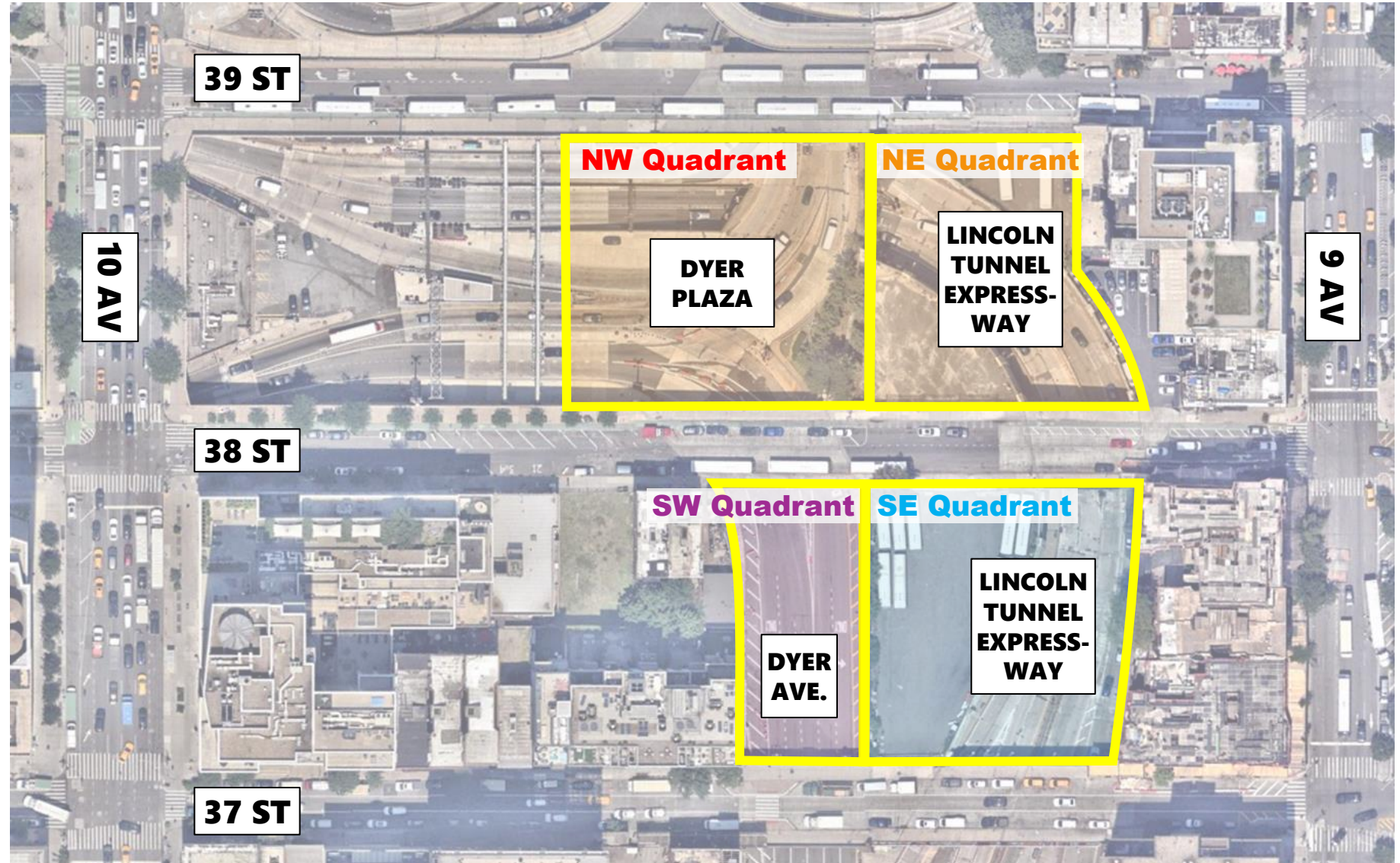
Planned Work March/April 2025

**NW Quadrant (Dyer Plaza)**

**NE Quadrant (LTE North)**

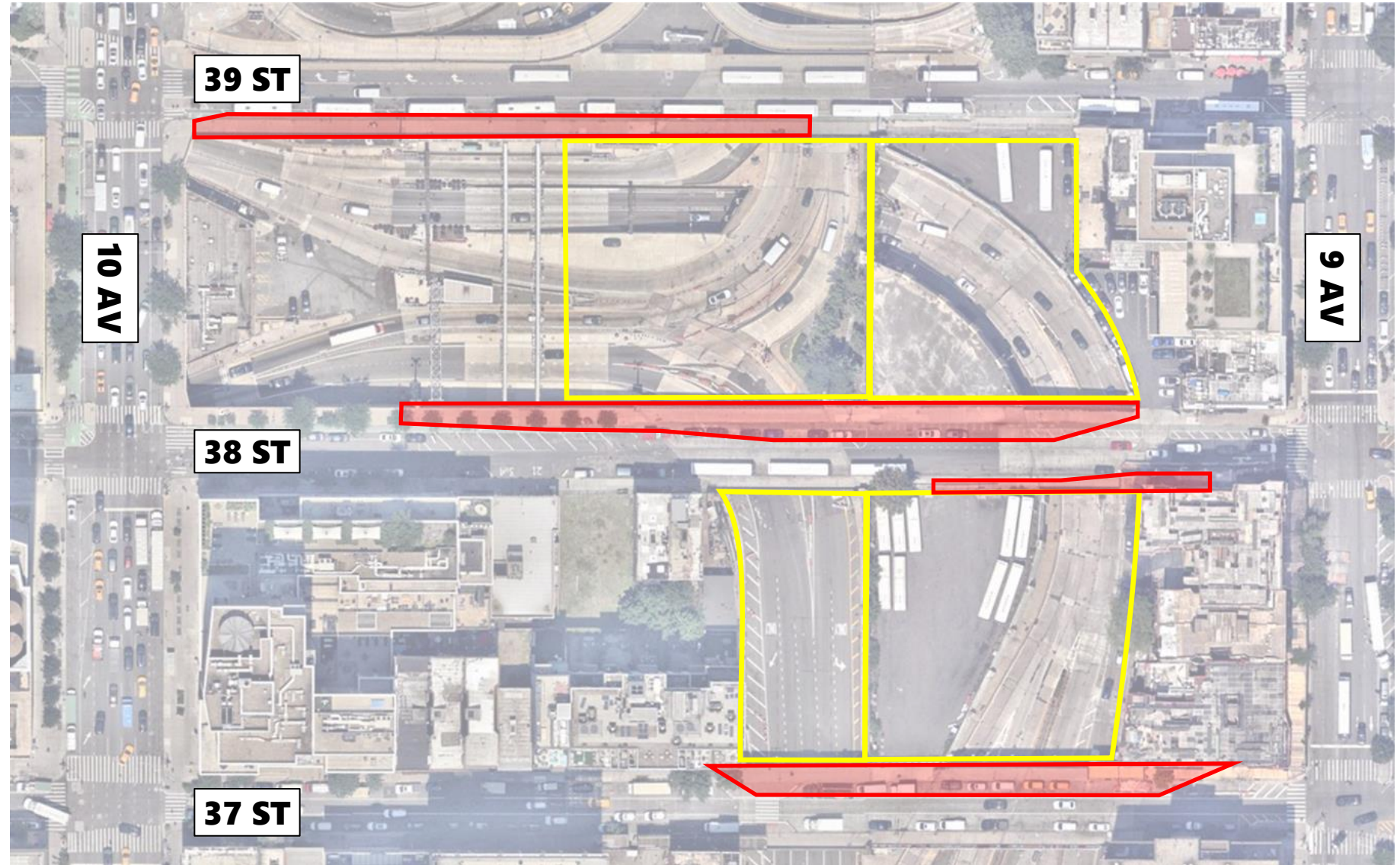
**SE Quadrant (LTE South)**

**SW Quadrant (Upper Dyer Ave)**



## ESTABLISH WORK ZONES with Maintenance of Traffic (MOT)

- Close Sidewalks/Lanes - 37th, 38th & 39th St

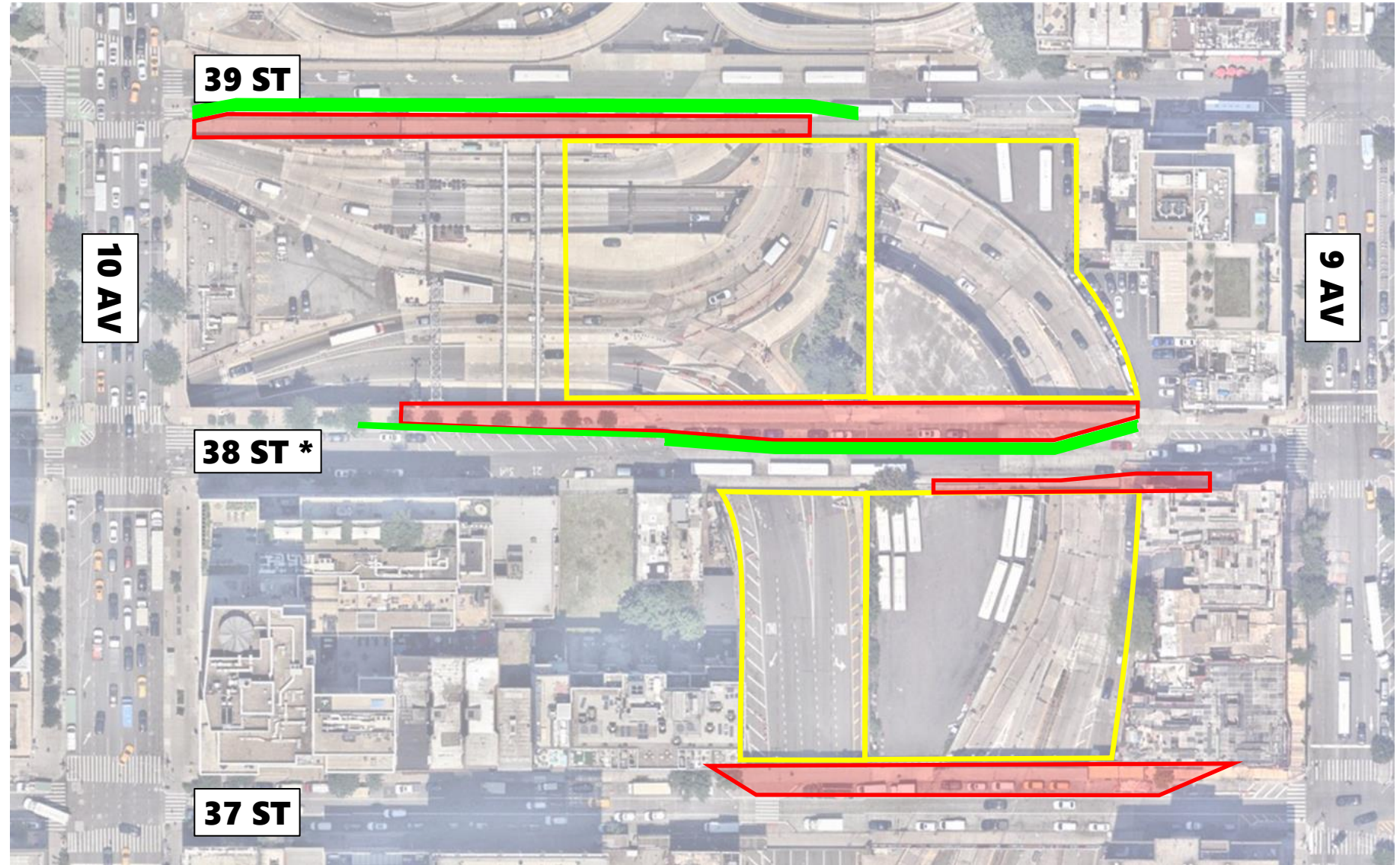


### LEGEND



 Sidewalk/Lane Closure Area

## ESTABLISH WORK ZONES with Maintenance of Traffic (MOT)

- Close Sidewalks/Lanes - 37th, 38th & 39th St
- Relocate Bike Lanes



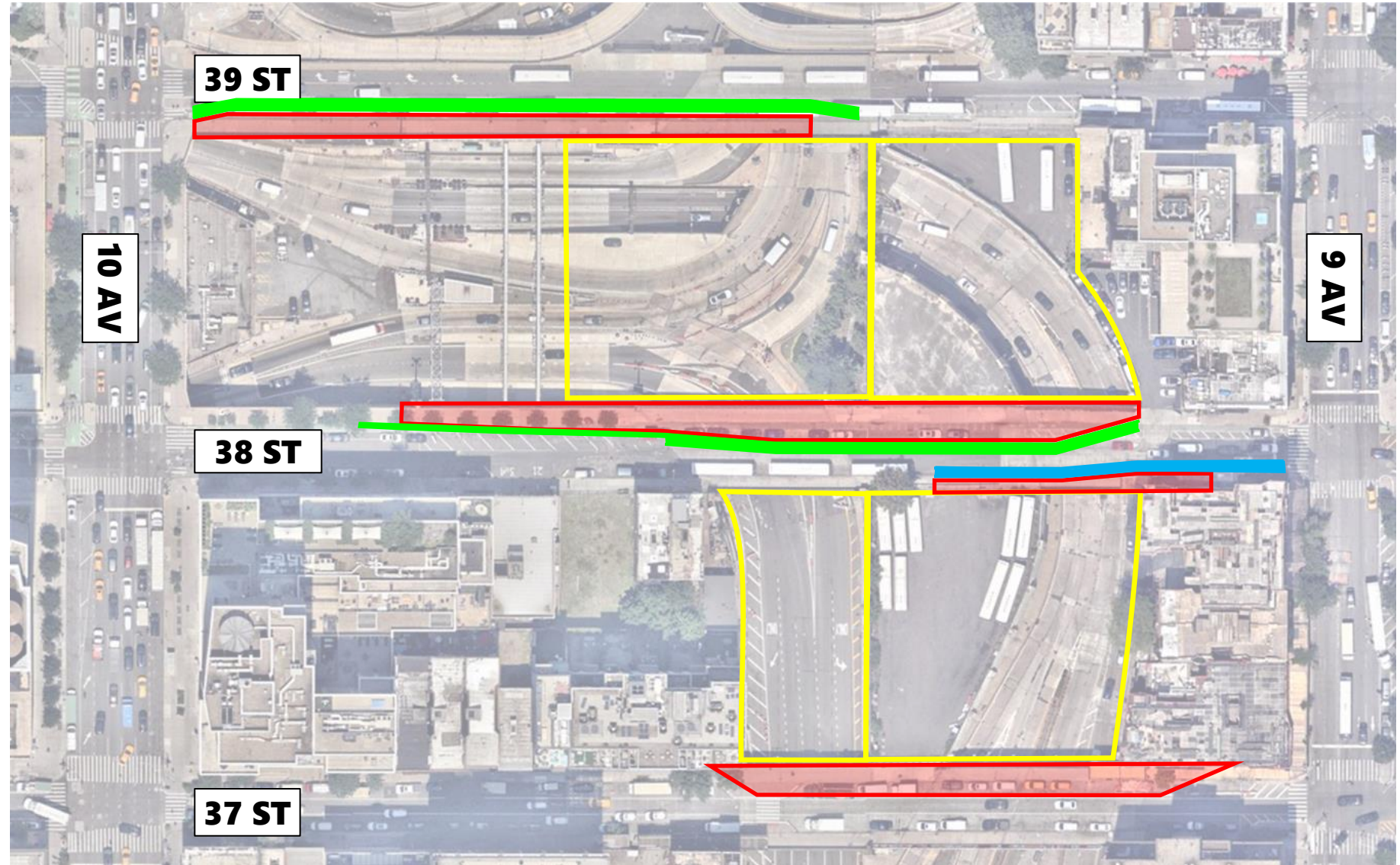
### LEGEND

-  Sidewalk/Lane Closure Area
-  Bike Lane w/ Jersey Barriers




\* Location of 38th St. Bike Lanes subject to change based on FDNY Access Needs

## ESTABLISH WORK ZONES with Maintenance of Traffic (MOT)

- Close Sidewalks/Lanes - 37th, 38th & 39th St
- Relocate Bike Lanes
- Relocate Pedestrian Walkways

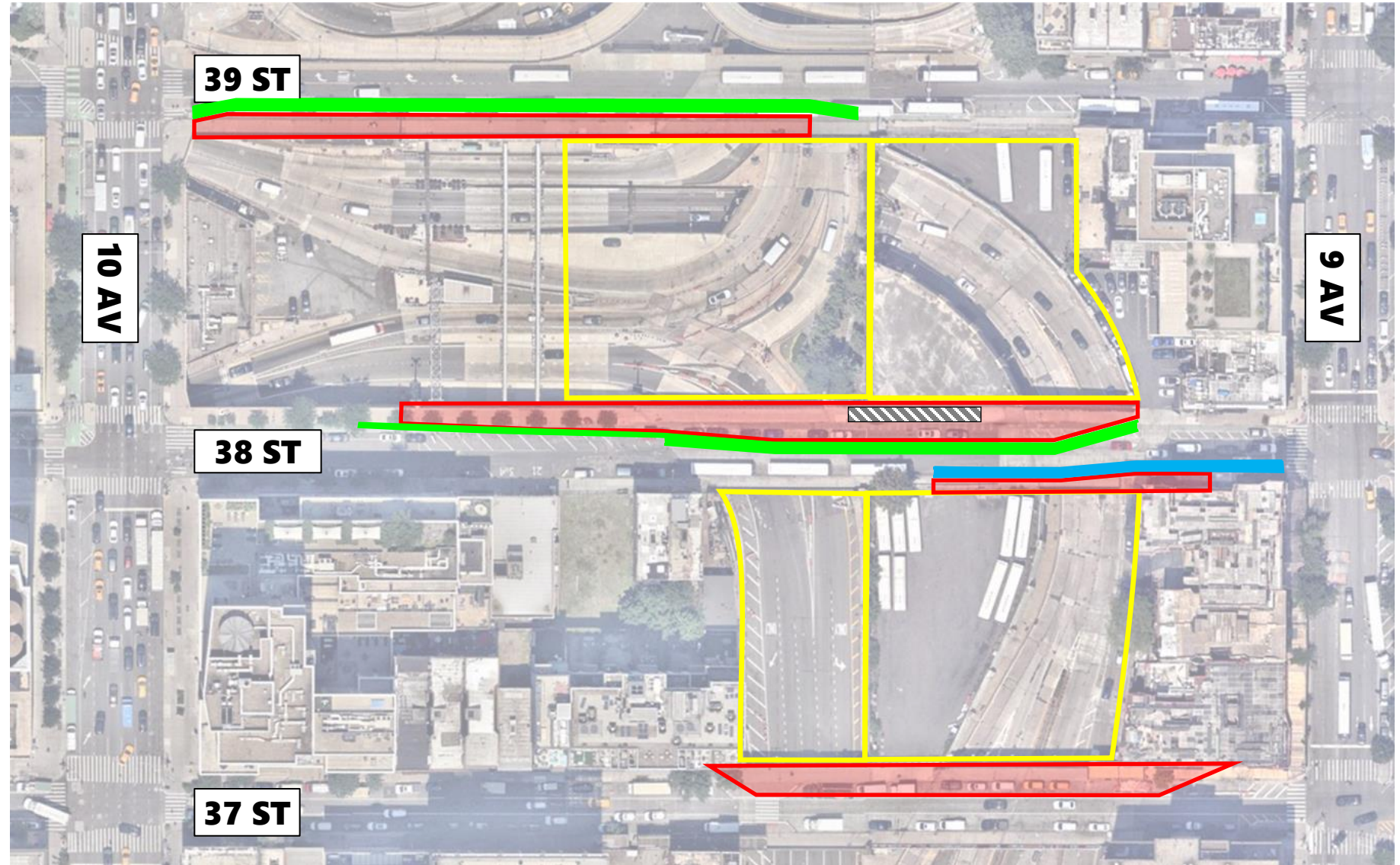


### LEGEND





-  Sidewalk/Lane Closure Area
-  Bike Lane w/ Jersey Barriers
-  Pedestrian Walkway w/ Jersey Barriers

## ESTABLISH WORK ZONES with Maintenance of Traffic (MOT)

- Close Sidewalks/Lanes - 37th, 38th & 39th St
- Relocate Bike Lanes
- Relocate Pedestrian Walkways
- Contractor's trailers



### LEGEND

-  Sidewalk/Lane Closure Area
-  Bike Lane w/ Jersey Barriers
-  Pedestrian Walkway w/ Jersey Barriers
-  Contractor's trailers



**NW Quadrant (Dyer Plaza)**



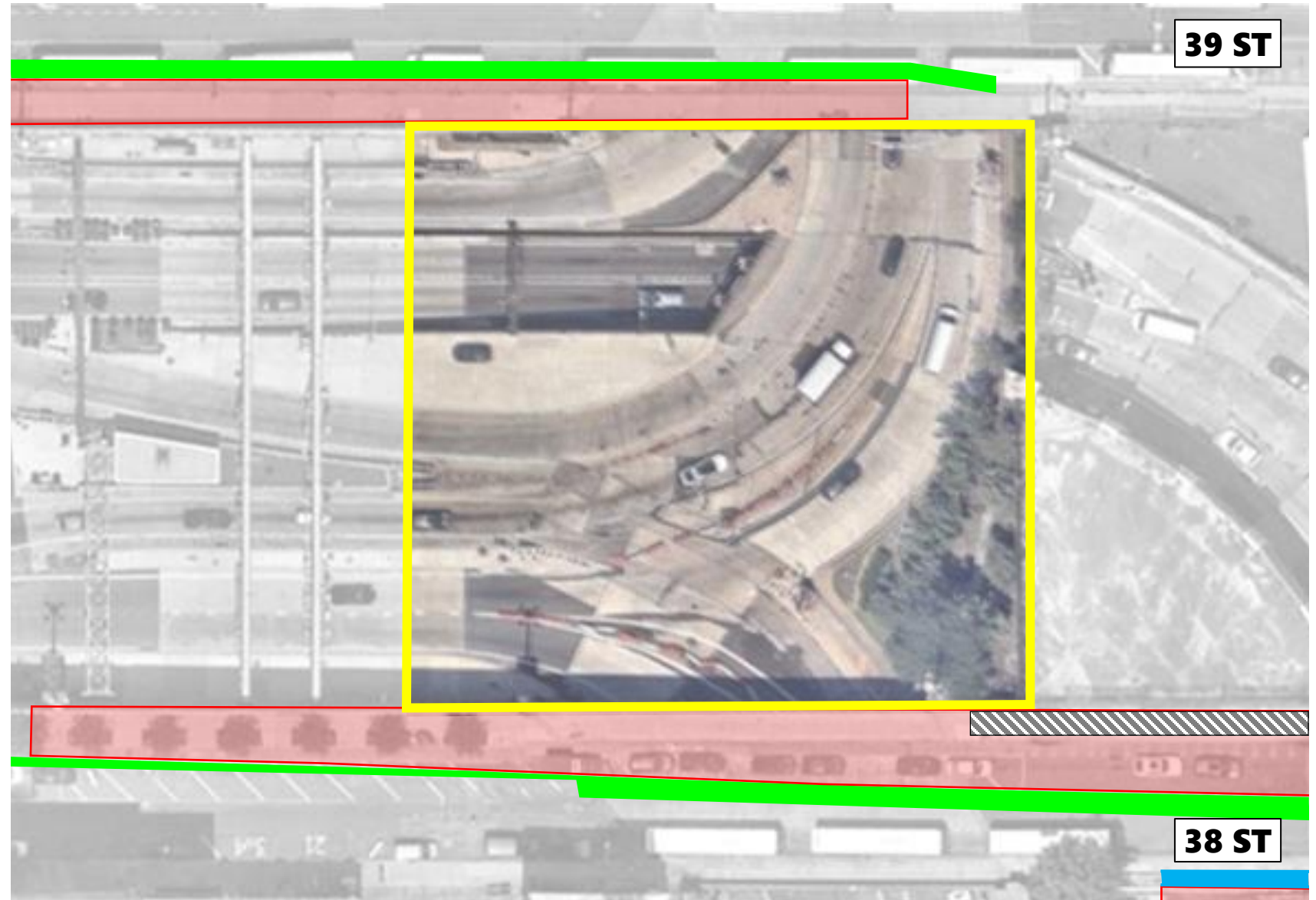


## NW Quadrant (Dyer Plaza)

- Maintenance of Traffic (MOT) Established

**LEGEND**

- Sidewalk/Lane Closure Area
- Bike Lane w/ Jersey Barriers
- Pedestrian Walkway w/ Jersey Barriers
- Contractor's trailers



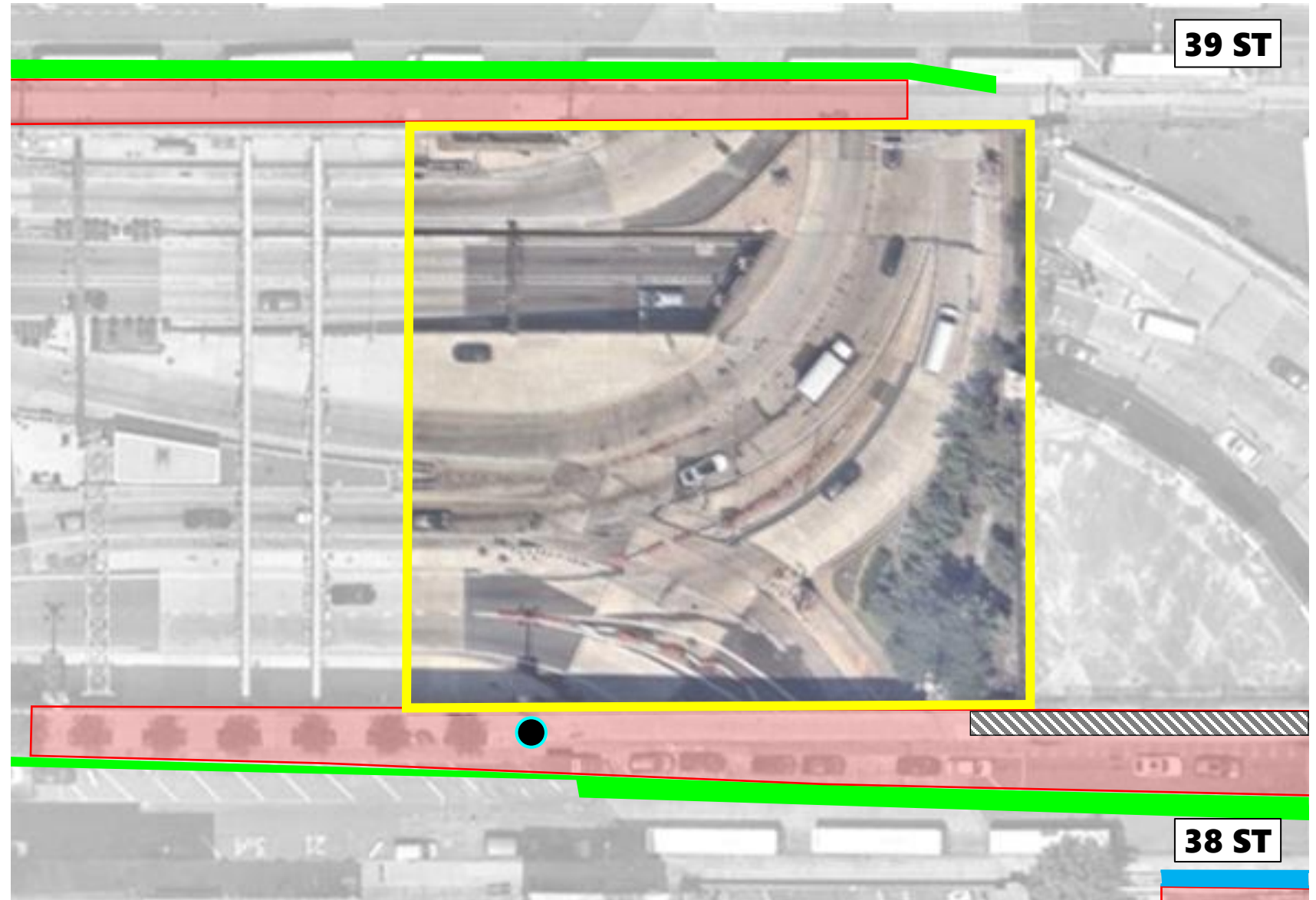


## NW Quadrant (Dyer Plaza)

- Maintenance of Traffic (MOT) Established
- Install noise monitoring devices

**LEGEND**

- Sidewalk/Lane Closure Area
- Bike Lane w/ Jersey Barriers
- Pedestrian Walkway w/ Jersey Barriers
- Contractor's trailers
- Noise Monitor



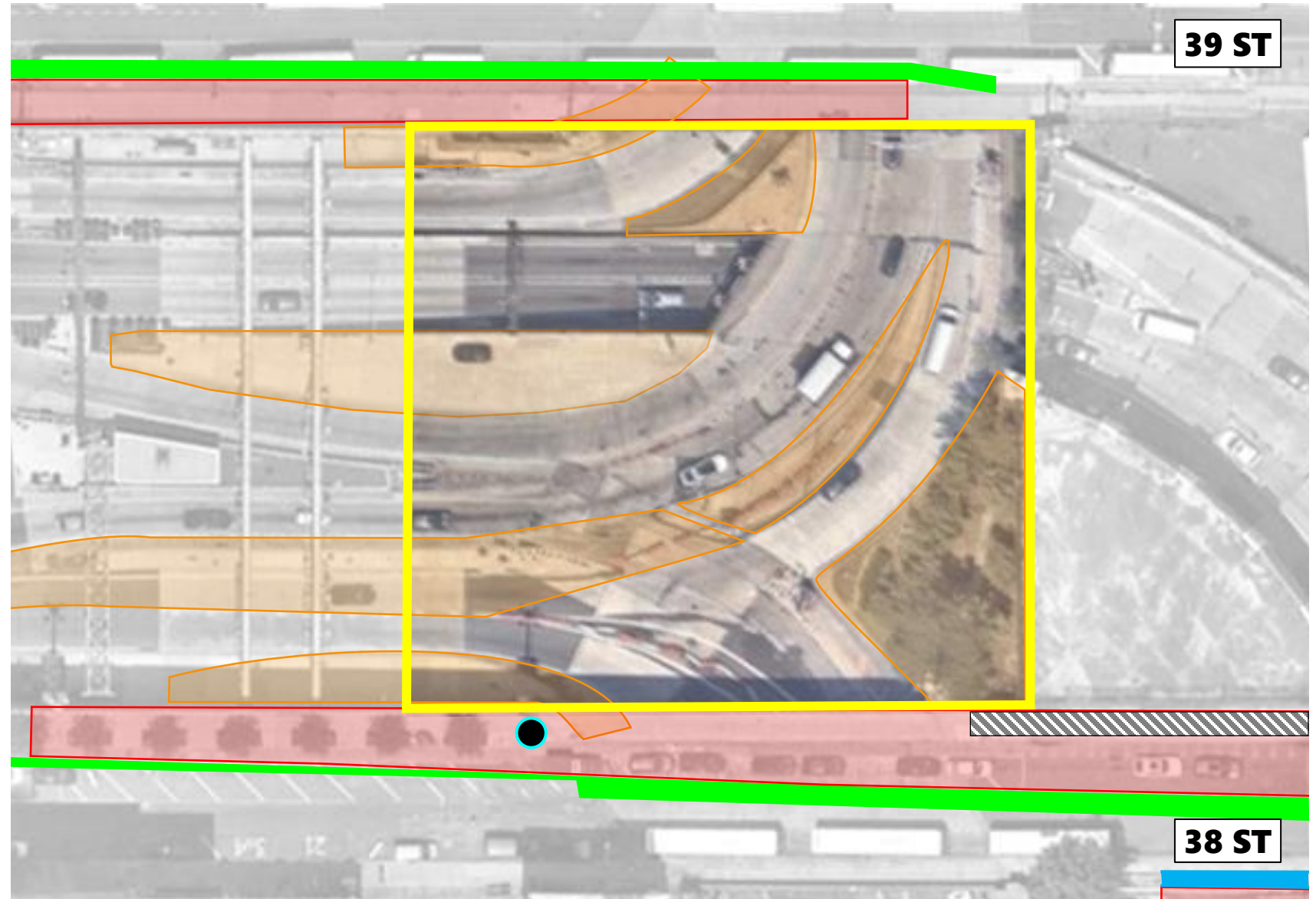


## NW Quadrant (Dyer Plaza)

- Maintenance of Traffic (MOT) Established
- Install noise monitoring devices
- Establish temporary work zones to prepare for foundations. Includes geotech borings/probes and signage.

### LEGEND

- Sidewalk/Lane Closure Area
- Temporary work zones
- Bike Lane w/ Jersey Barriers
- Pedestrian Walkway w/ Jersey Barriers
- Contractor's trailers
- Noise Monitor



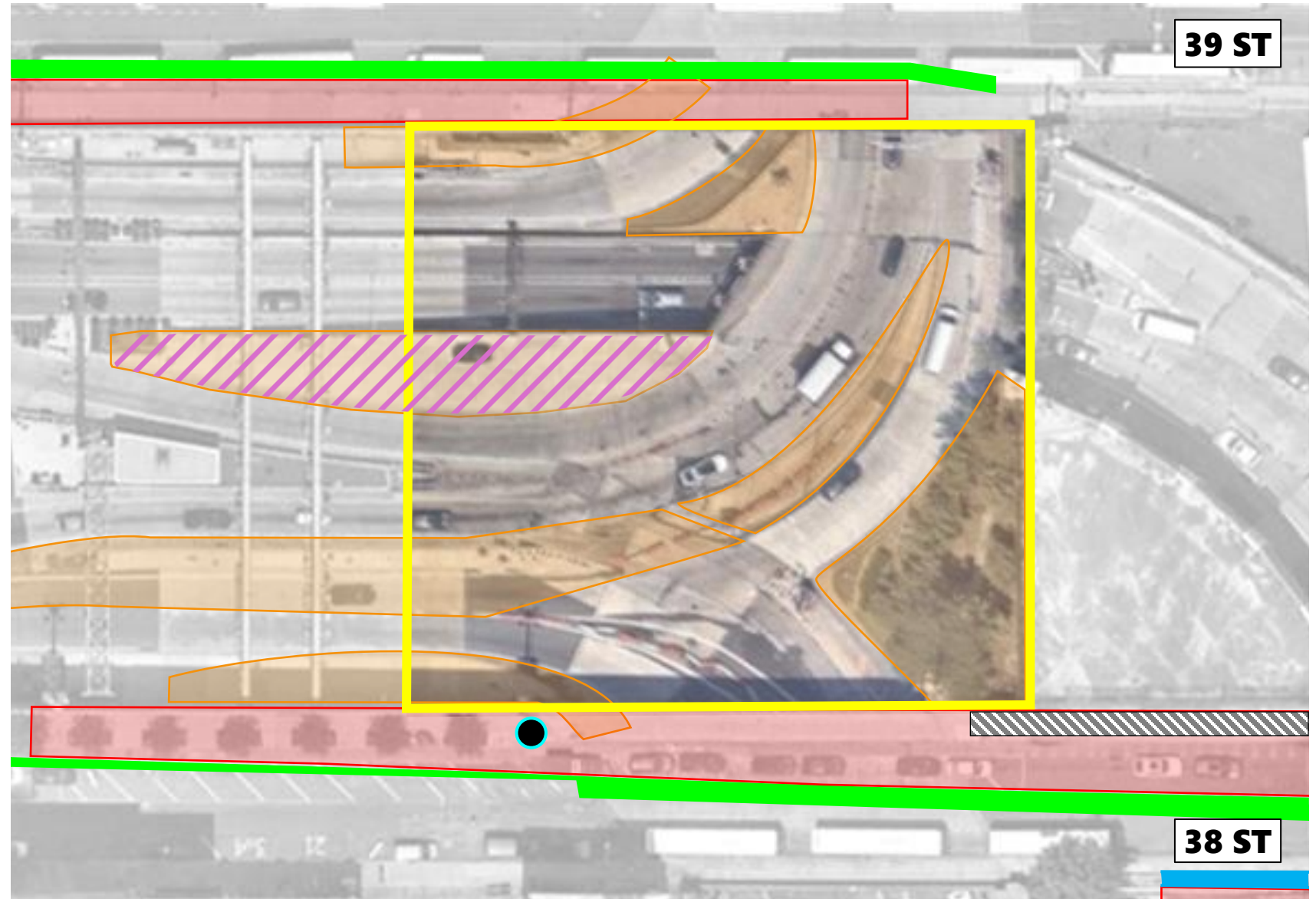


## NW Quadrant (Dyer Plaza)

- Maintenance of Traffic (MOT) Established
- Install noise monitoring devices
- Establish temporary work zones to prepare for foundations. Includes geotech borings/probes and signage.
- Utility ductbank relocations – communications and electric – to prepare for foundation work

### LEGEND

- |                                       |                      |
|---------------------------------------|----------------------|
| Sidewalk/Lane Closure Area            | Temporary work zones |
| Bike Lane w/ Jersey Barriers          | Utilities            |
| Pedestrian Walkway w/ Jersey Barriers |                      |
| Contractor's trailers                 |                      |
| Noise Monitor                         |                      |

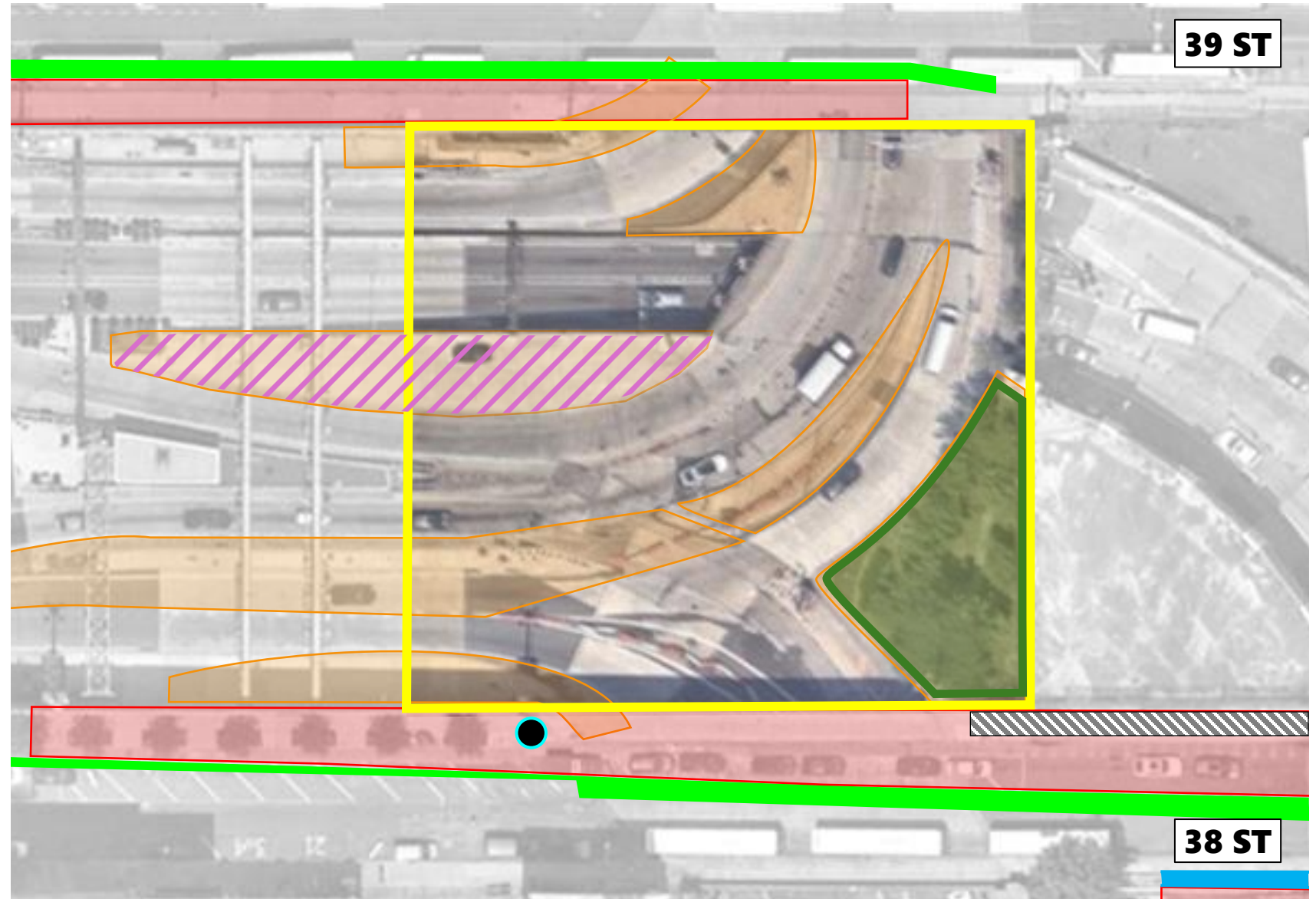




## NW Quadrant (Dyer Plaza)

- Maintenance of Traffic (MOT) Established
- Install noise monitoring devices
- Establish temporary work zones to prepare for foundations. Includes geotech borings/probes and signage.
- Utility ductbank relocations – communications and electric – to prepare for foundation work
- Site clearing to remove trees, “Welcome to NY” sign, flagpoles, brick walls, sidewalk and curb

LEGEND			
	Sidewalk/Lane Closure Area		Temporary work zones
	Bike Lane w/ Jersey Barriers		Utilities
	Pedestrian Walkway w/ Jersey Barriers		Site clearing / demo
	Contractor's trailers		Noise Monitor



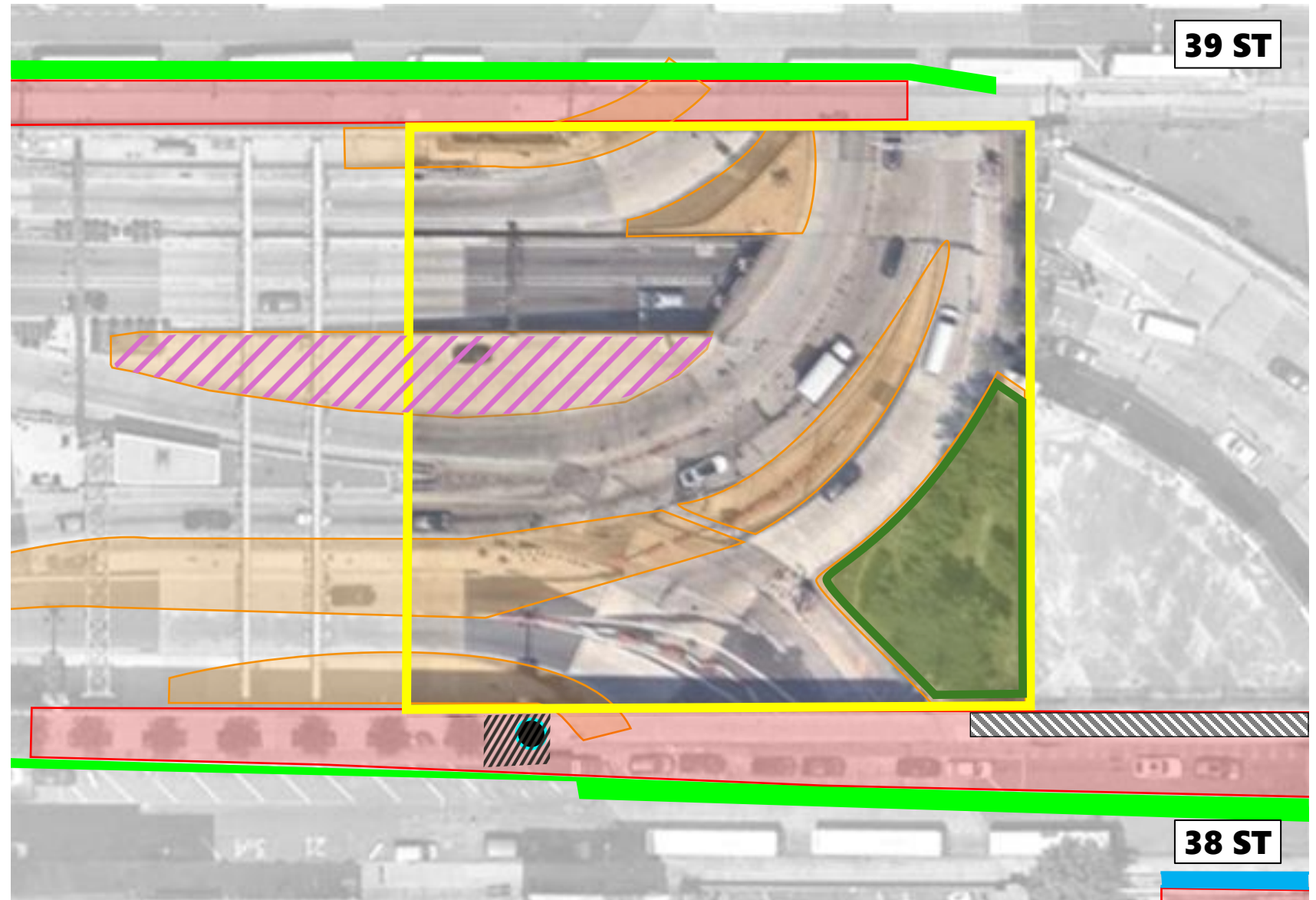


## NW Quadrant (Dyer Plaza)

- Maintenance of Traffic (MOT) Established
- Install noise monitoring devices
- Establish temporary work zones to prepare for foundations. Includes geotech borings/probes and signage.
- Utility ductbank relocations – communications and electric – to prepare for foundation work
- Site clearing to remove trees, “Welcome to NY” sign, flagpoles, brick walls, sidewalk and curb
- Sidewalk trenching for temporary power

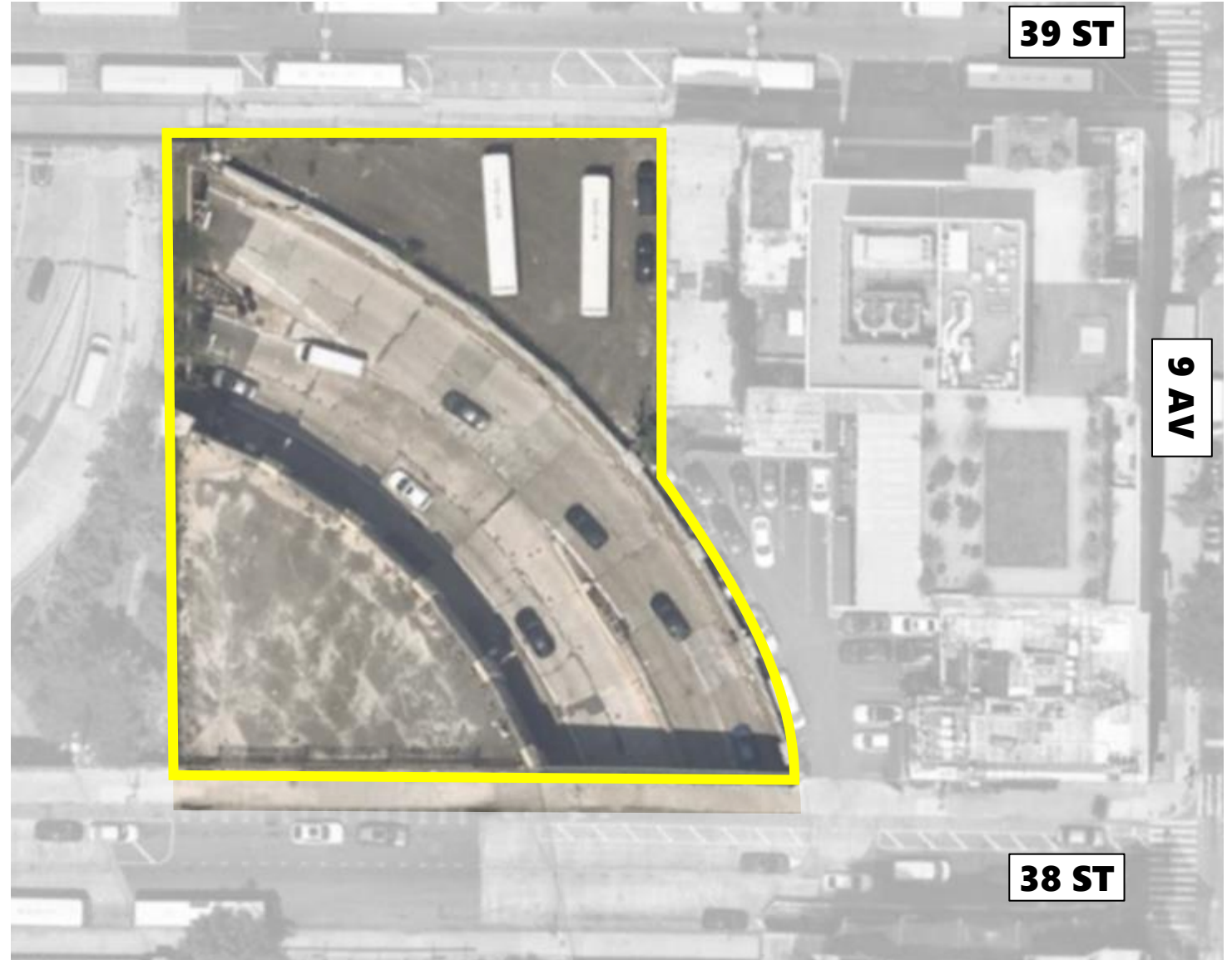
### LEGEND

Sidewalk/Lane Closure Area	Temporary work zones
Bike Lane w/ Jersey Barriers	Utilities
Pedestrian Walkway w/ Jersey Barriers	Site clearing / demo
Contractor’s trailers	Trenching
Noise Monitor	





## NE Quadrant (LTE North)







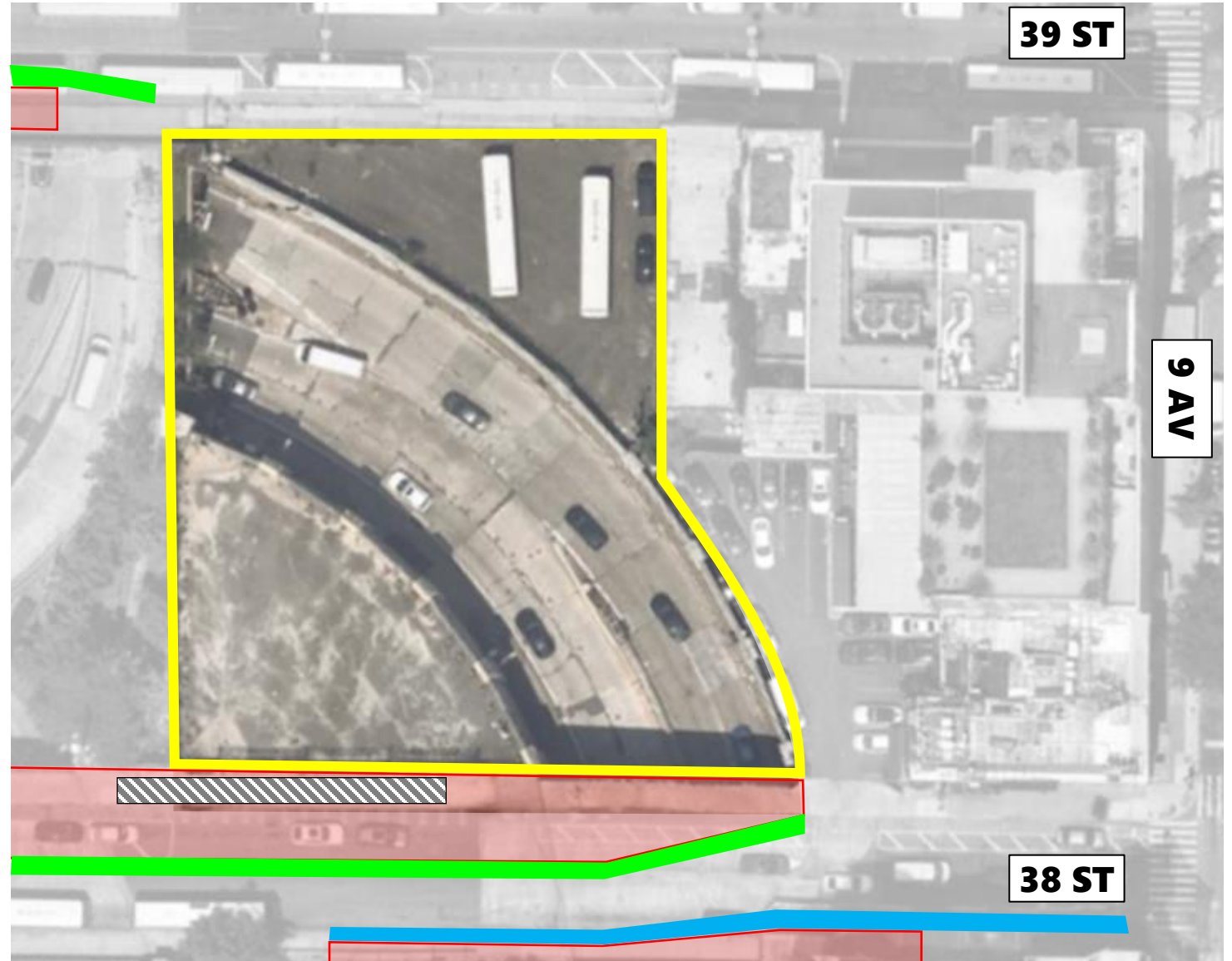


## NE Quadrant (LTE North)

- Maintenance of Traffic (MOT) Established

**LEGEND**

-  Sidewalk/Lane Closure Area
-  Bike Lane w/ Jersey Barriers
-  Pedestrian Walkway w/ Jersey Barriers
-  Contractor's trailers



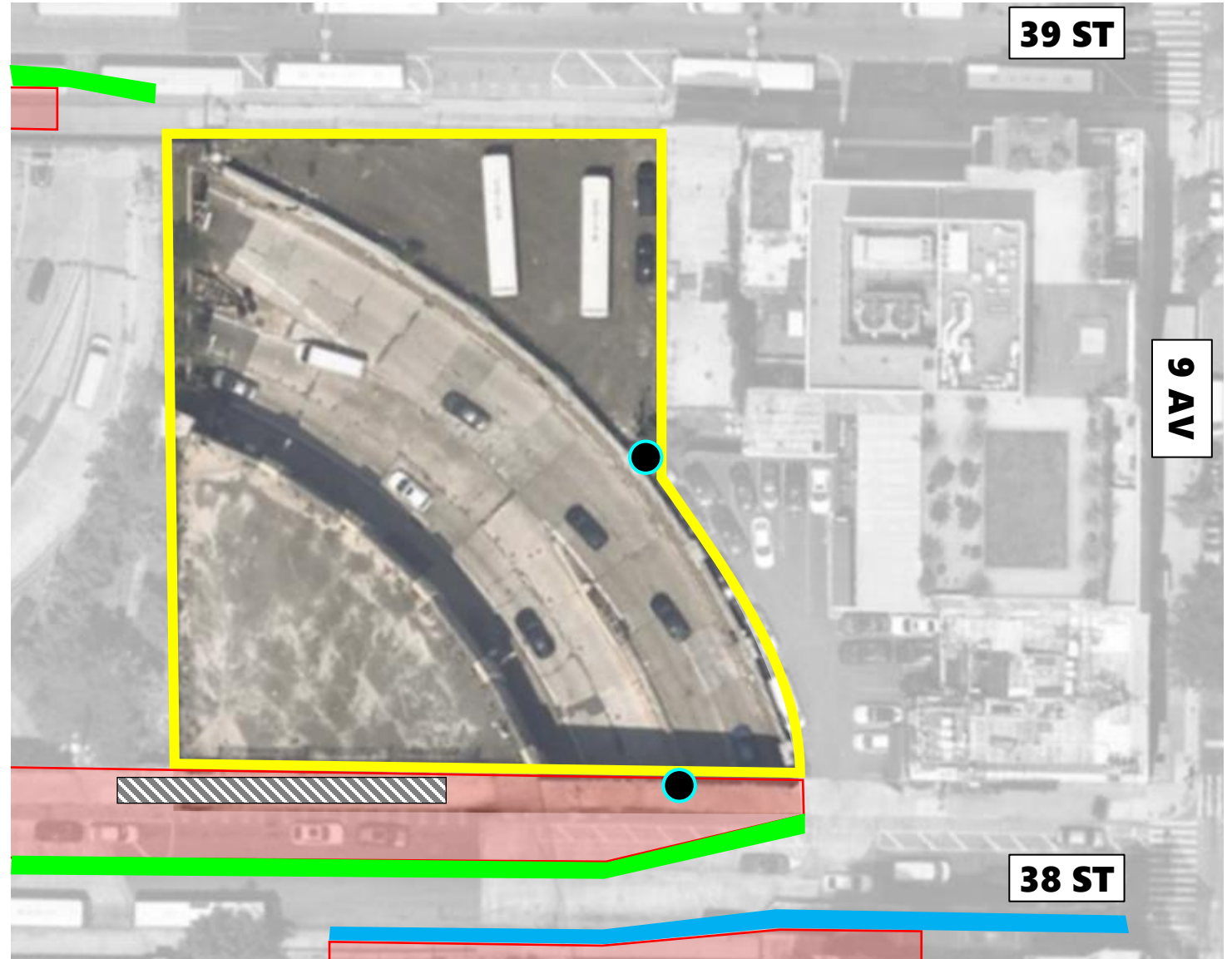


## NE Quadrant (LTE North)

- Maintenance of Traffic (MOT) Established
- Install noise monitoring devices

### LEGEND

- Sidewalk/Lane Closure Area
- Bike Lane w/ Jersey Barriers
- Pedestrian Walkway w/ Jersey Barriers
- Contractor's trailers
- Noise Monitor





## NE Quadrant (LTE North)

- Maintenance of Traffic (MOT) Established
- Install noise monitoring devices
- Set up temporary work zone, sidewalk closure & lane shift, to prepare for utility relocations

### LEGEND

- Sidewalk/Lane Closure Area
- Temporary work zones
- Bike Lane w/ Jersey Barriers
- Pedestrian Walkway w/ Jersey Barriers
- Contractor's trailers
- Noise Monitor



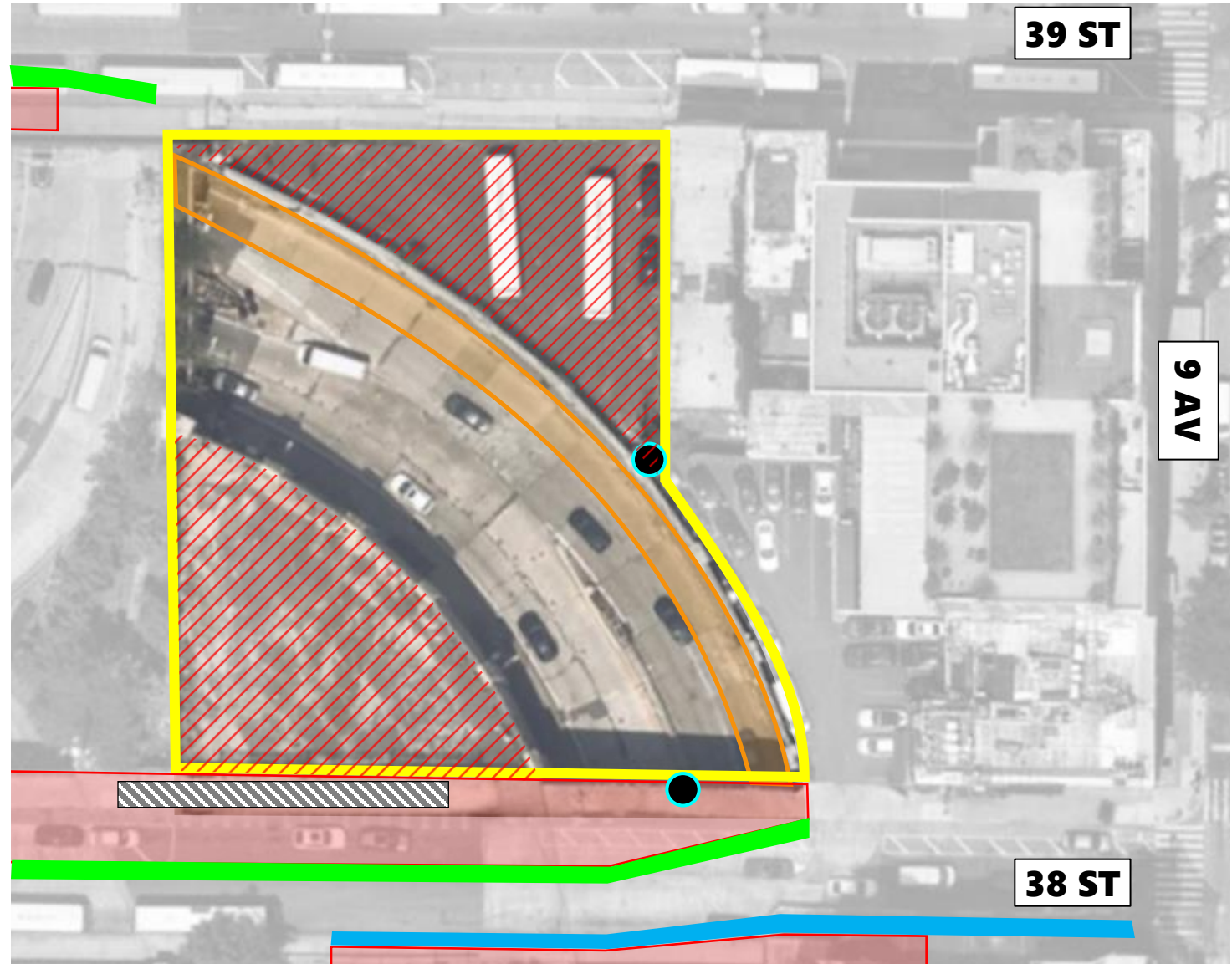


## NE Quadrant (LTE North)

- Maintenance of Traffic (MOT) Established
- Install noise monitoring devices
- Set up temporary work zone, sidewalk closure & lane shift, to prepare for utility relocations
- Remove bollards, chain link fencing, light poles, signposts and asphalt; perform geotech boring/probes.

### LEGEND

- |                                       |                      |
|---------------------------------------|----------------------|
| Sidewalk/Lane Closure Area            | Temporary work zones |
| Bike Lane w/ Jersey Barriers          | Demo Area            |
| Pedestrian Walkway w/ Jersey Barriers |                      |
| Contractor's trailers                 |                      |
| Noise Monitor                         |                      |





SE Quadrant (LTE South)






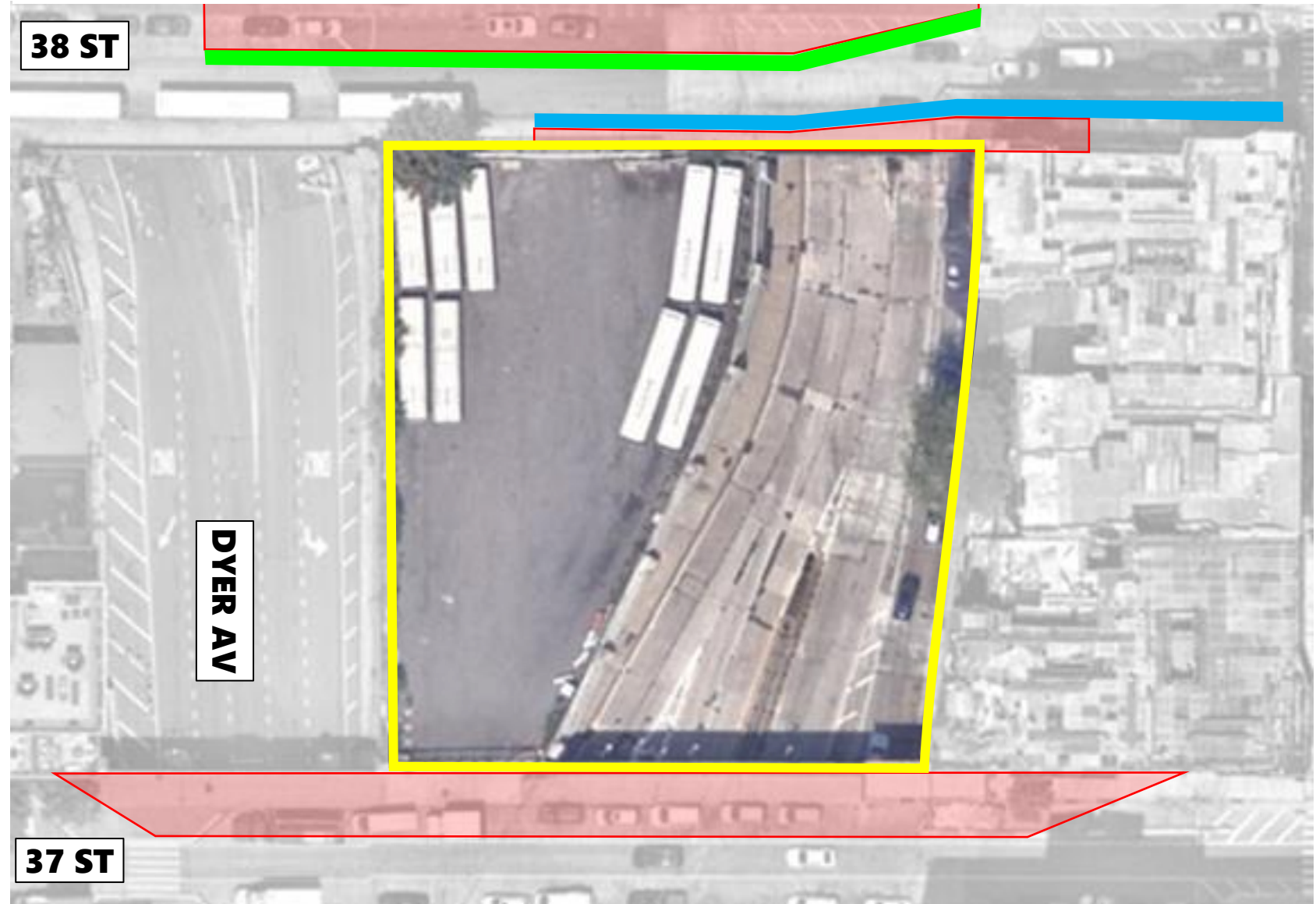


## SE Quadrant (LTE South)

- Maintenance of Traffic (MOT) Established

### LEGEND

-  Sidewalk/Lane Closure Area
-  Bike Lane w/ Jersey Barriers
-  Pedestrian Walkway w/ Jersey Barriers







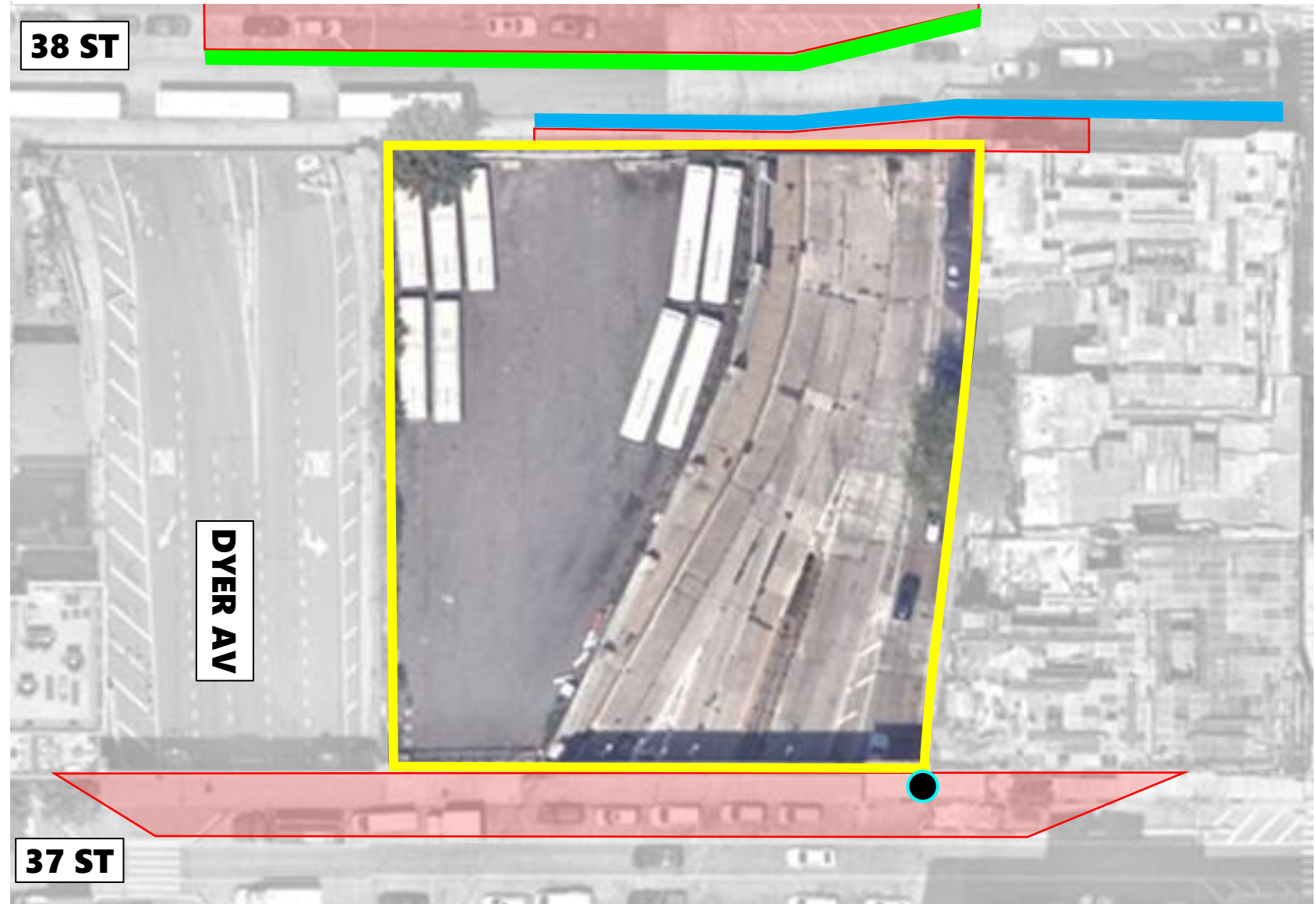


## SE Quadrant (LTE South)

- Maintenance of Traffic (MOT) Established
- Install noise monitoring devices

### LEGEND

-  Sidewalk/Lane Closure Area
-  Bike Lane w/ Jersey Barriers
-  Pedestrian Walkway w/ Jersey Barriers
-  Noise Monitor



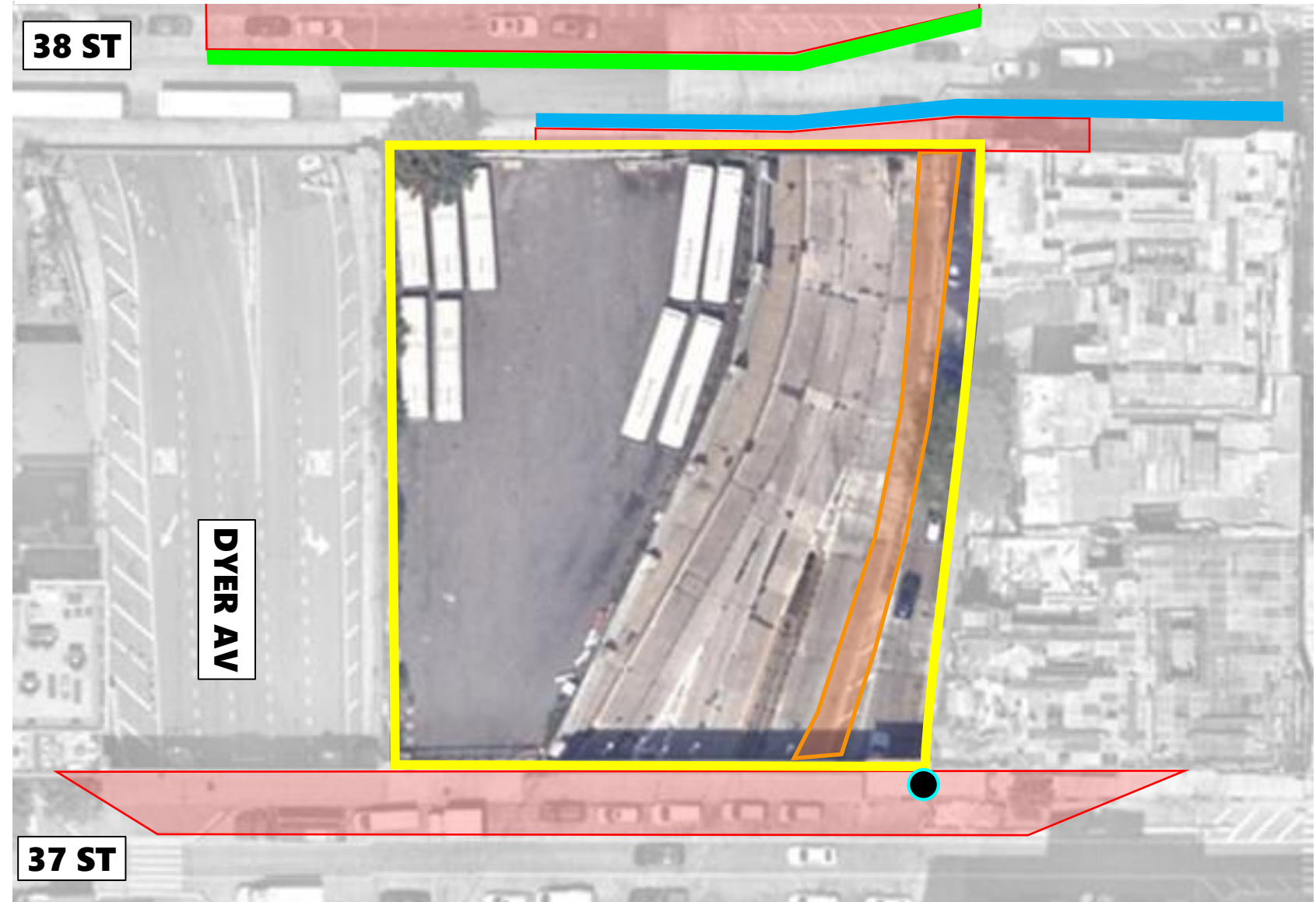


## SE Quadrant (LTE South)

- Maintenance of Traffic (MOT) Established
- Install noise monitoring devices
- Set up temporary work zone, sidewalk closure & lane shift, to prepare for utility relocations

**LEGEND**

Sidewalk/Lane Closure Area	Temporary work zones
Bike Lane w/ Jersey Barriers	
Pedestrian Walkway w/ Jersey Barriers	
Noise Monitor	



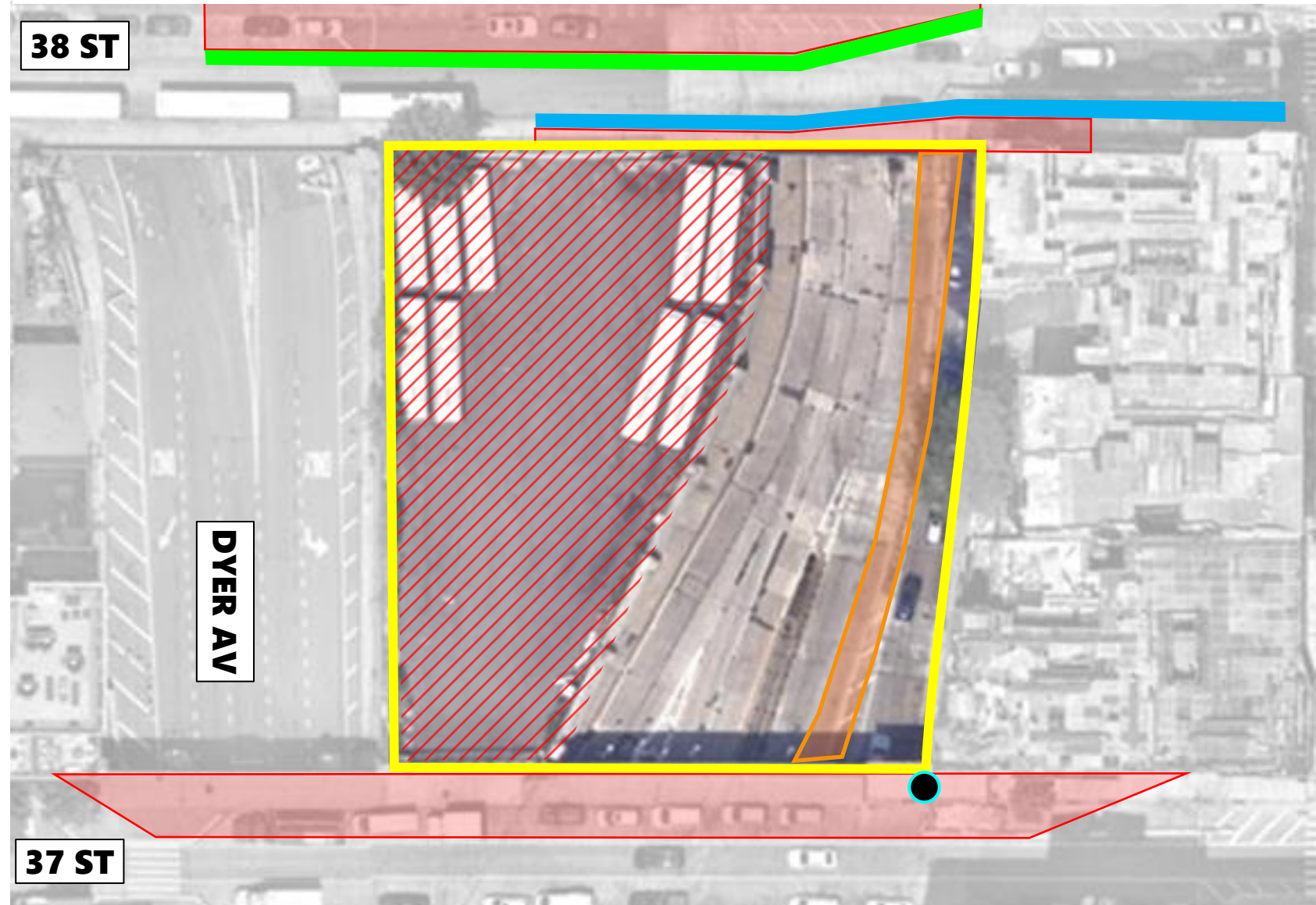


## SE Quadrant (LTE South)

- Maintenance of Traffic (MOT) Established
- Install noise monitoring devices
- Set up temporary work zone, sidewalk closure & lane shift, to prepare for utility relocations
- Remove bollards, chain link fencing, light poles, signposts and asphalt; perform geotech boring/probes

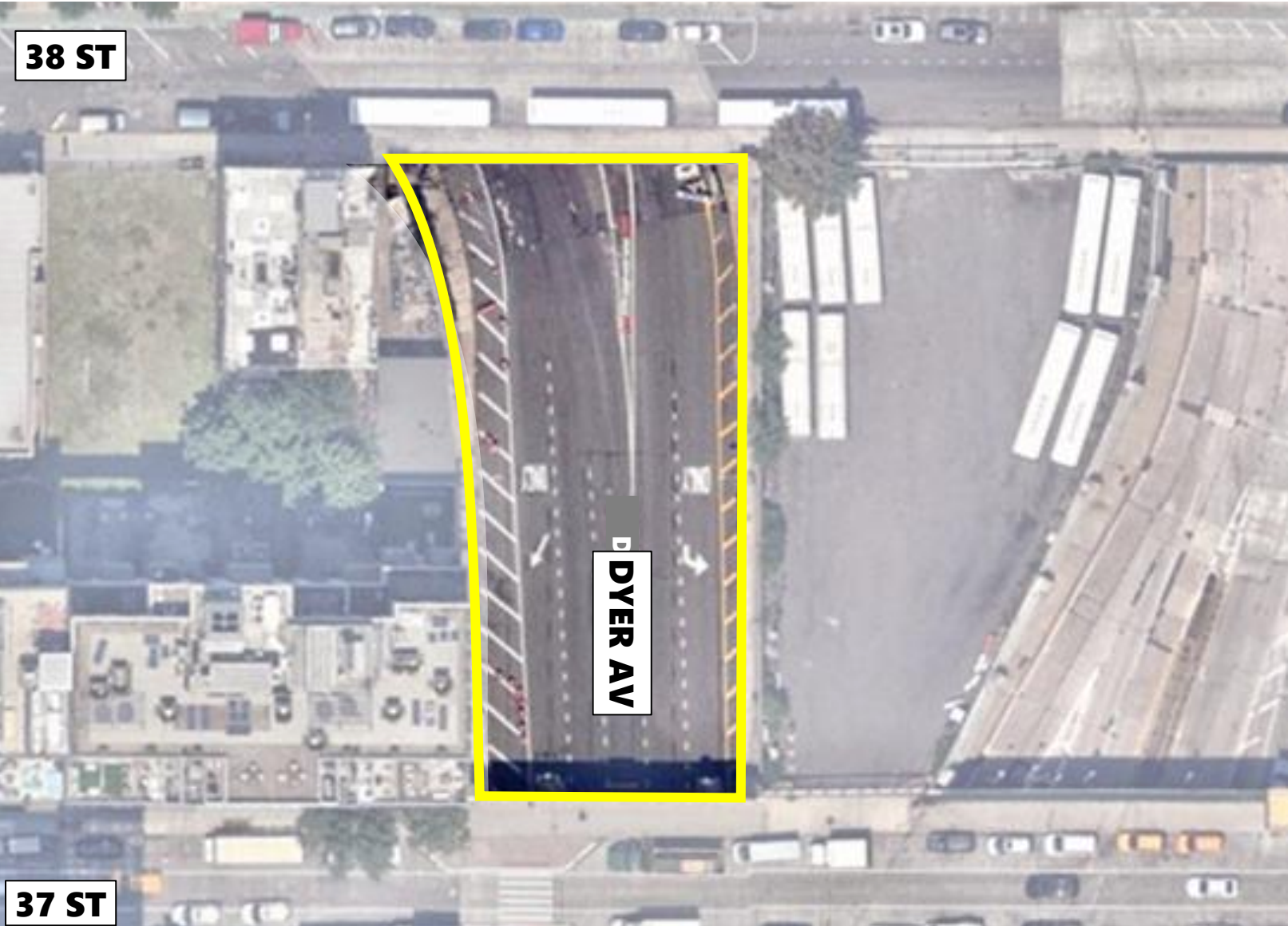
### LEGEND

- |                                       |                      |
|---------------------------------------|----------------------|
| Sidewalk/Lane Closure Area            | Temporary work zones |
| Bike Lane w/ Jersey Barriers          | Demo Area            |
| Pedestrian Walkway w/ Jersey Barriers |                      |
| Noise Monitor                         |                      |





**SW Quadrant (Upper Dyer Ave)**






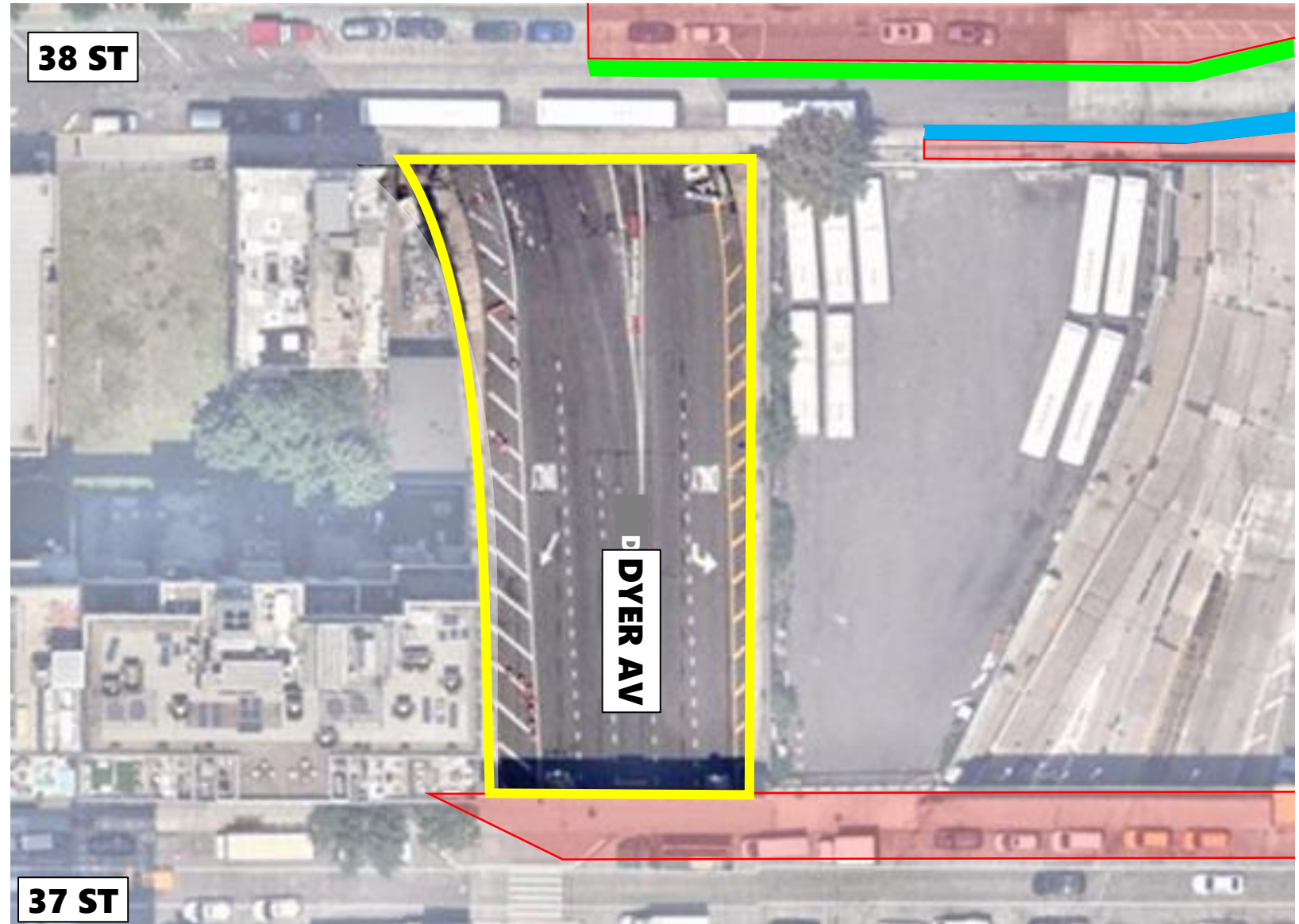


## SW Quadrant (Upper Dyer Ave)

- Maintenance of Traffic (MOT) Established

### LEGEND

-  Sidewalk/Lane Closure Area
-  Bike Lane w/ Jersey Barriers
-  Pedestrian Walkway w/ Jersey Barriers







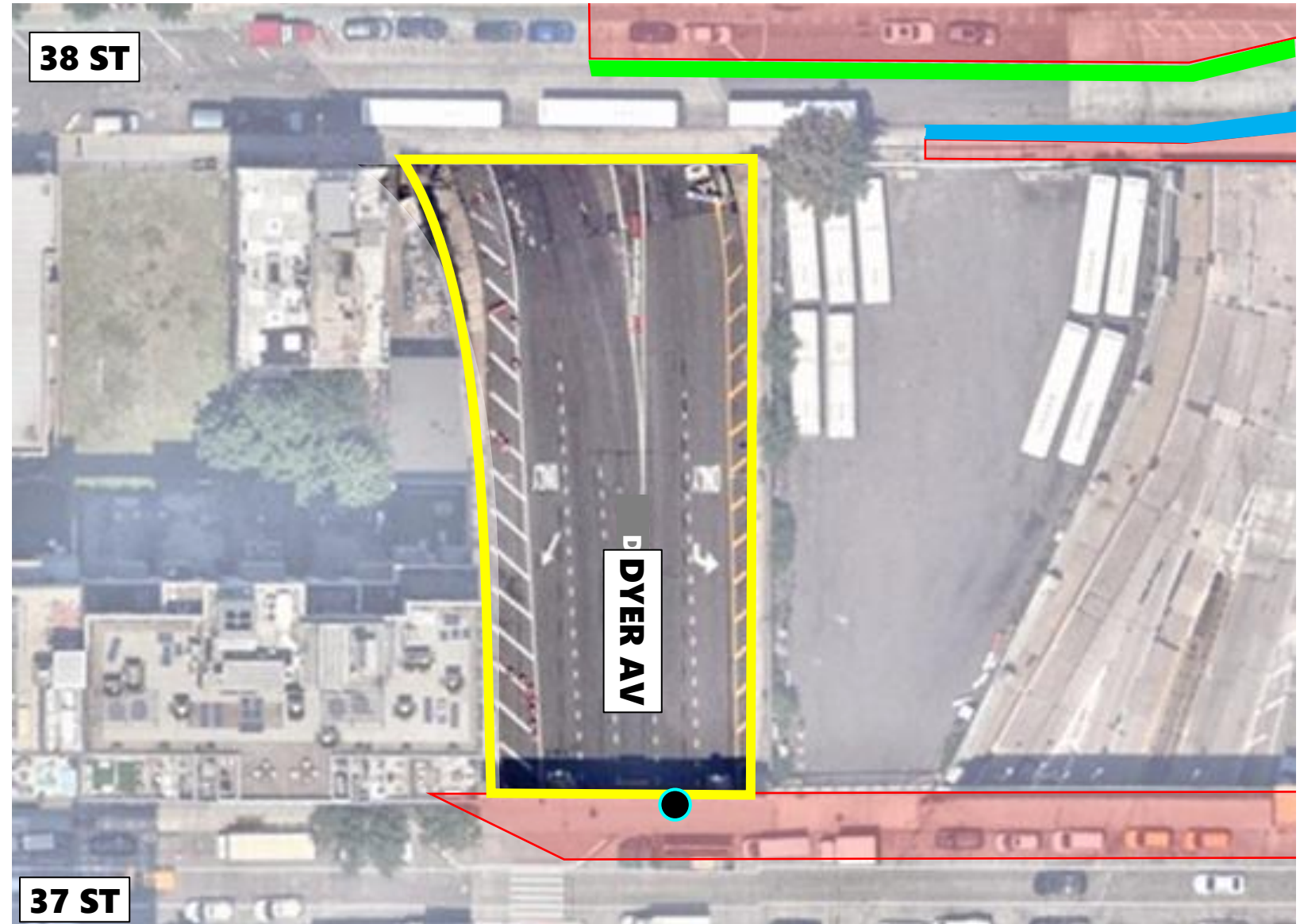


## SW Quadrant (Upper Dyer Ave)

- Maintenance of Traffic (MOT) Established
- Install noise monitoring device

**LEGEND**

-  Sidewalk/Lane Closure Area
-  Bike Lane w/ Jersey Barriers
-  Pedestrian Walkway w/ Jersey Barriers
-  Noise Monitor








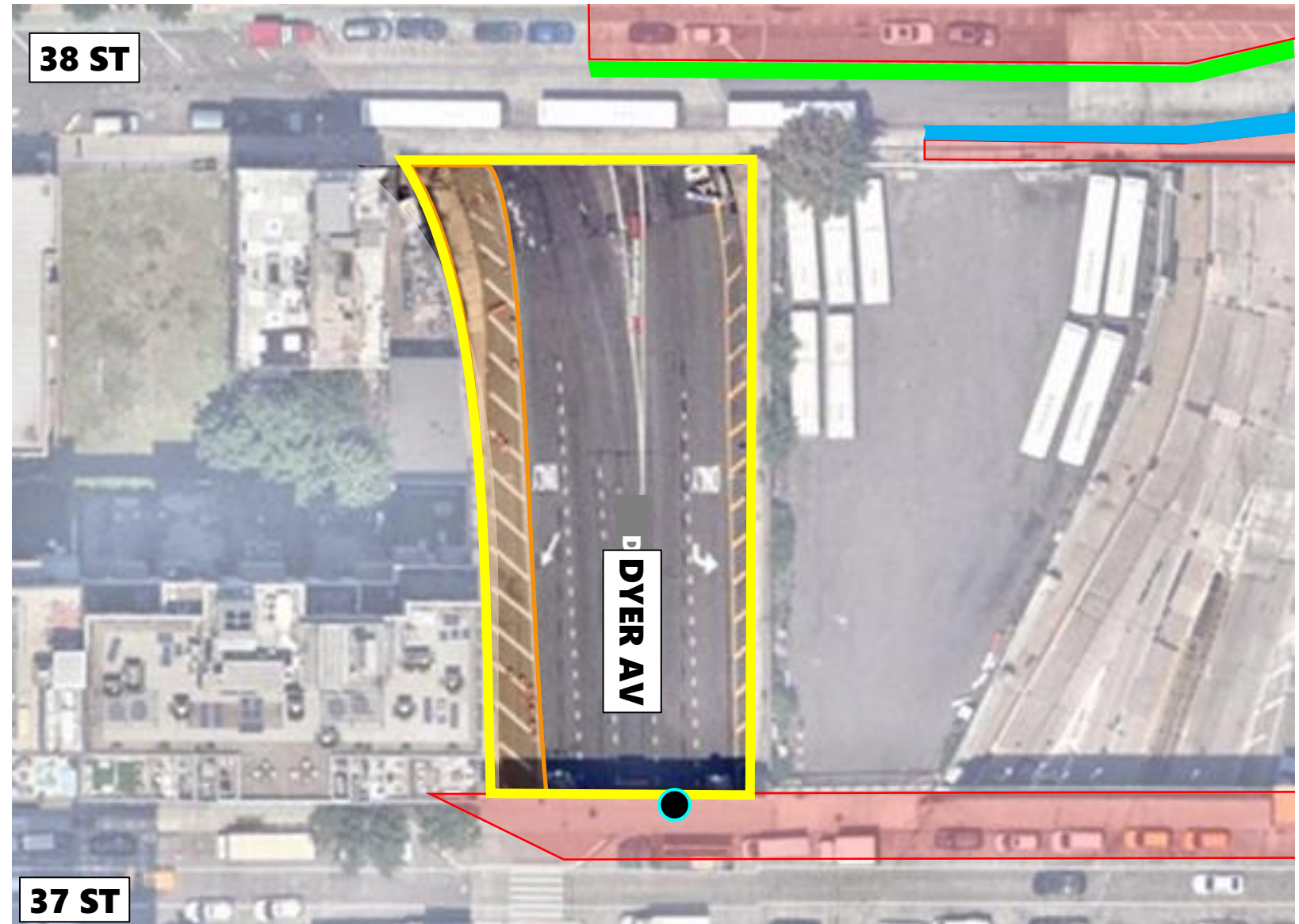


## SW Quadrant (Upper Dyer Ave)

- Maintenance of Traffic (MOT) Established
- Install noise monitoring device
- Set up temporary work zones, shoulder closure, to prepare for geotech borings/probes

**LEGEND**

 Sidewalk/Lane Closure Area	 Temporary work zones
 Bike Lane w/ Jersey Barriers	
 Pedestrian Walkway w/ Jersey Barriers	
 Noise Monitor	



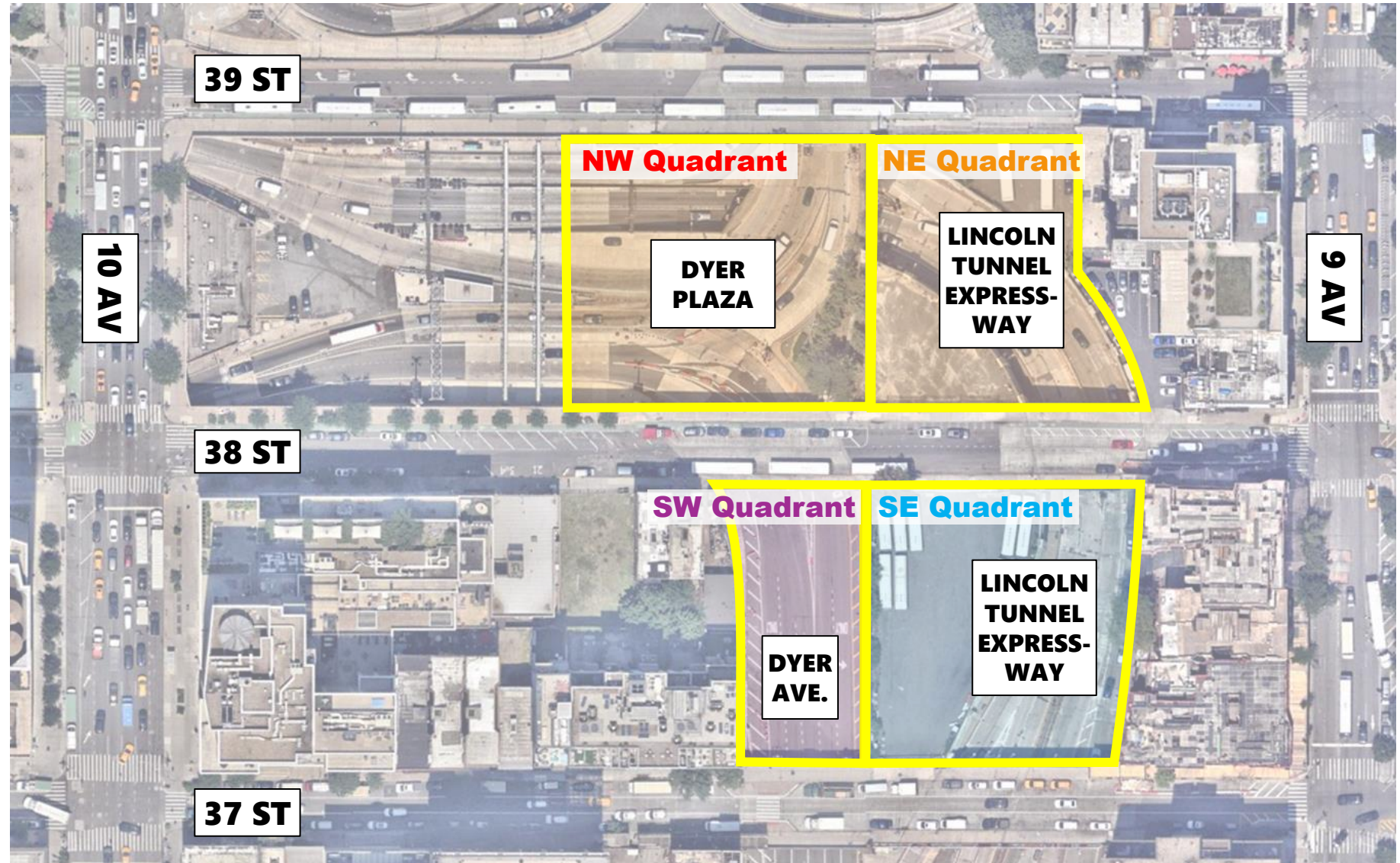
## WORK HOURS

### WEEKDAYS 7 AM – 3:30 PM

- Planned work this period

### WEEKNIGHTS 11 PM- 5 AM (Periodic as needed in Lower Level)

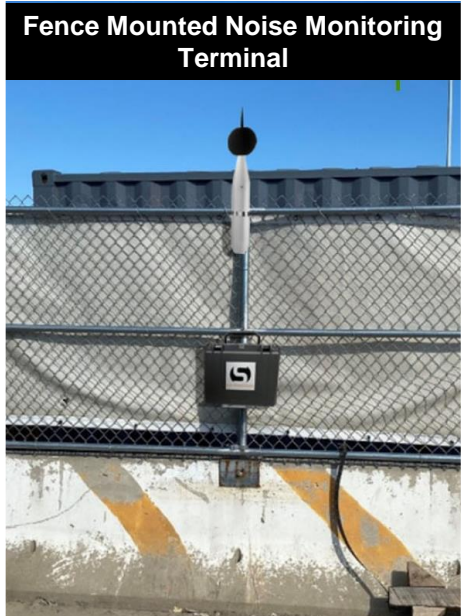
- Install Jersey Barriers to Establish Temporary Work Zones at lower levels



# Noise Monitoring Dyer Deck Overs



Noise Monitoring Local Device



Fence Mounted Noise Monitoring Terminal



Tripod Mounted Noise Monitoring Terminal



Pole Mounted Noise Monitoring Terminal



Noise Monitoring Devices



Noise Monitoring Stanchions



Noise Monitoring Stanchions

**Right of Entry 100 Ft Buffer**

# 100 ft. Buffer Map

## Dyer Deck-overs (Phase 1A)

### PRIVATE OWNERS

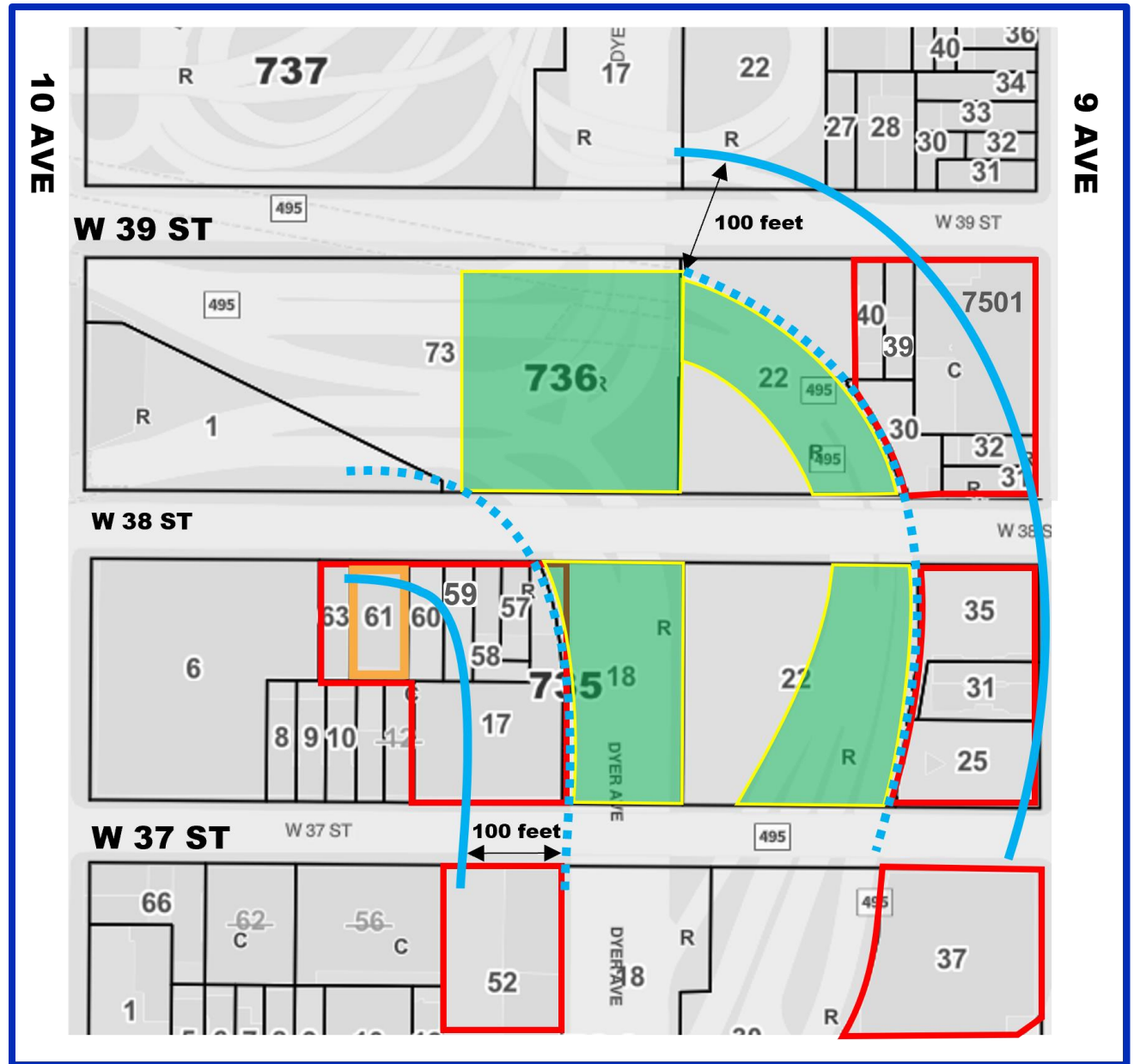
Owner / Property Description	Property Street Address	Block	Lot
Lockwood LTD	438 West 38th St	735	60
Lockwood LTD	436 West 38th St	735	59
Andromeda Realty LLC / Popular Market	432 West 38th St	735	57
60 Exeter Street, LLC	434 West 38th St	735	58
446 West 38th Holdings, LLC	446 West 38th St	735	63
408 West 39th Street Apts LLC	408 West 39th St	736	40
NA (Condominium)	511 9th Ave	736	7501
406 West 39th Street, LLC	406 West 39th St	736	39
509 Ninth Avenue, LLC	405 West 38th St	736	30
509 Ninth Avenue, LLC	507 9th Ave	736	31
509 Ninth Avenue, LLC	509 9th Ave	736	32
Hudson Meyer LLC	485 9th Ave	735	31
ZDJ Hudson Yards, LLC	501 9th Ave	735	35
ZDJ Hudson Yards, LLC	489 9th Ave	735	25
EQR-Mantena, LLC	431 West 37th St	735	17
ZDJ W 33 LLC	430 West 37th St	734	52
EQR-Hudson Crossing A, LLC	400 West 37th St	734	37

### CITY-OWNED PROPERTIES

Engine Co. 34 Firehouse	440-442 West 38th St	735	61
-------------------------	----------------------	-----	----

### LEGEND

- ⋯⋯⋯ Project Construction Limits
- ROE Requirement Limits
- Private Properties requiring access
- City-owned
- Future Deck Overs



# Discussion + Q&A

# Contact Us

*Email:*

MBTreplacement@panynj.gov

*Phone:*

(212) 435-5682

*Additional documents and resources for the project are available at*

**[www.PABTreplacement.com](http://www.PABTreplacement.com)**



Scan here with your camera app and register your email to stay connected and receive updates directly to your inbox