

491 Broadway aka 446 Broome Street: Proposed Legalization of Window Installations



491 Broadway aka 446 Broome Street, located in the SoHo-Cast Iron Historic District Designation Map. (NYC LPC)

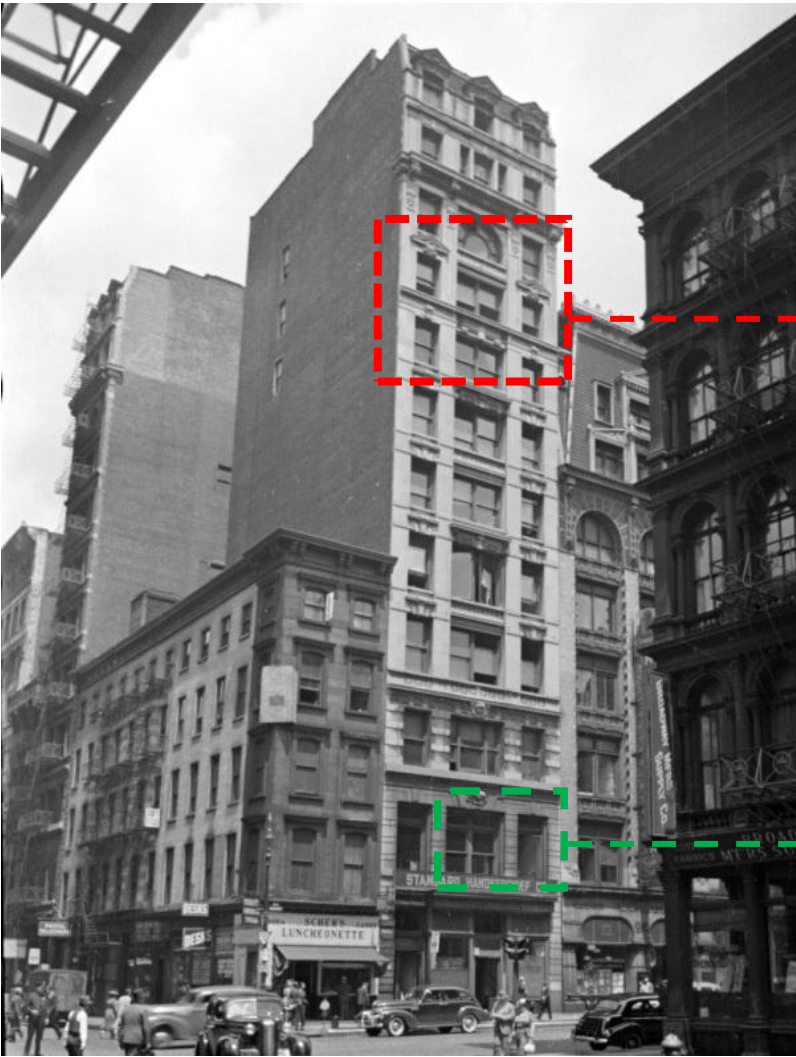


491 Broadway aka 446 Broome Street, located on Zola Map. (NYC Planning)



491 Broadway aka 446 Broome Street, April 2026. (J. Peu-Duvallon)

491 Broadway, East Elevation: Historic and Current Conditions



491 Broadway aka 446 Broome Street, east elevation, 1930'S tax photo. (NYC Municipal Archive)



1930's tax photo, cropped. (NYC Municipal Archive)



491 Broadway, east elevation second floor windows, April 2026. (J. Peu-Duvallon)

491 Broadway, East Elevation: Previous Condition at 9th Floor Windows



491 Broadway, east façade, Summer 2025.
(Metamechanics)



491 Broadway partial façade, Summer 2025. (MetaMechanics)



491 Broadway interior, Summer 2025. (MetaMechanics)

491 Broadway, East Elevation: Current Condition at 9th Floor Windows



491 Broadway, east façade, April 2026. (J. Peu-Duvallon)



491 Broadway, East Elevation: Current Condition at 9th Floor Windows



491 Broadway east façade, April 2026. (J. Peu-Duvallon)



491 Broadway partial east façade, April 2026. (J. Peu-Duvallon)

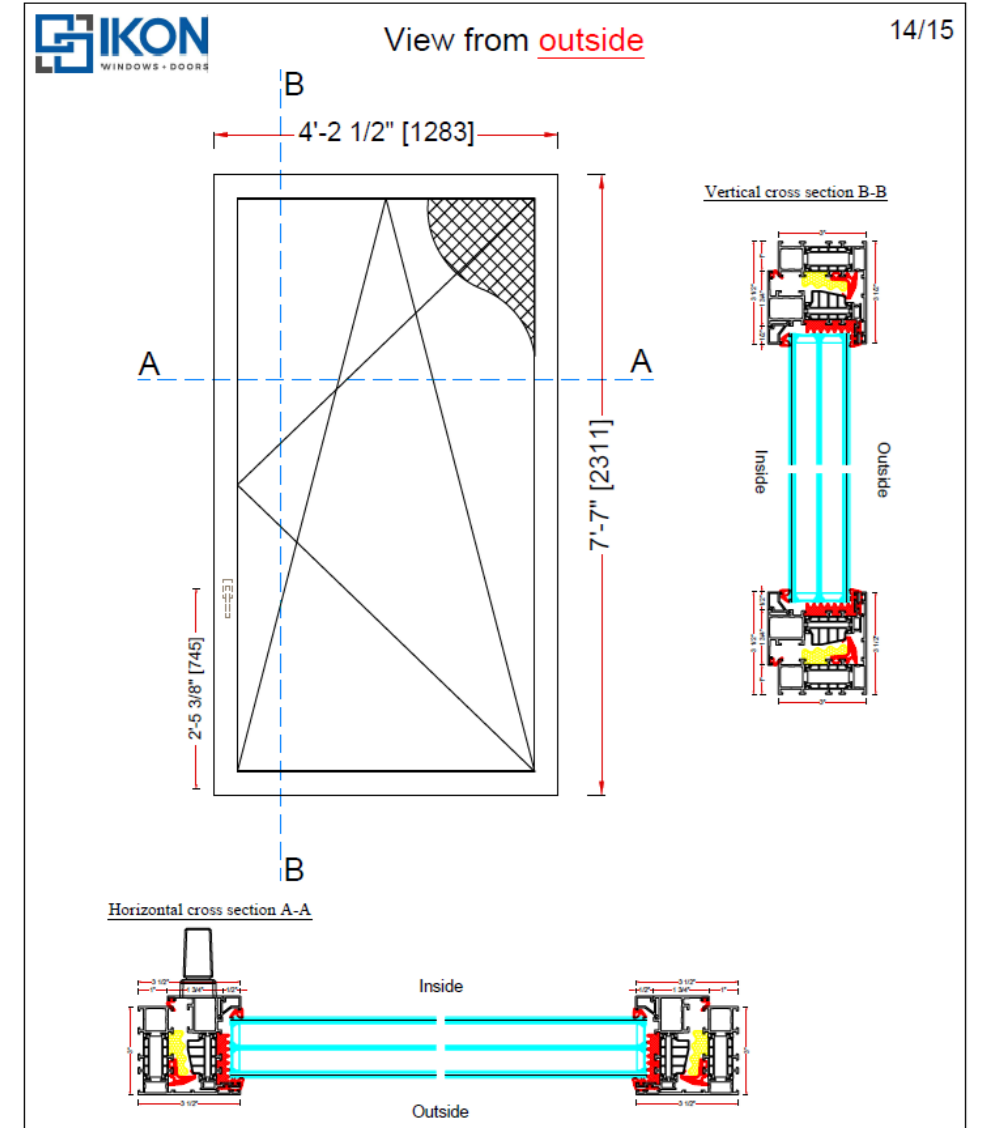


491 Broadway partial east façade, zoomed in on replaced windows at 9th floor. April 2026. (J. Peu-Duvallon)

491 Broadway, East Elevation: Windows Installed at 9th Floor



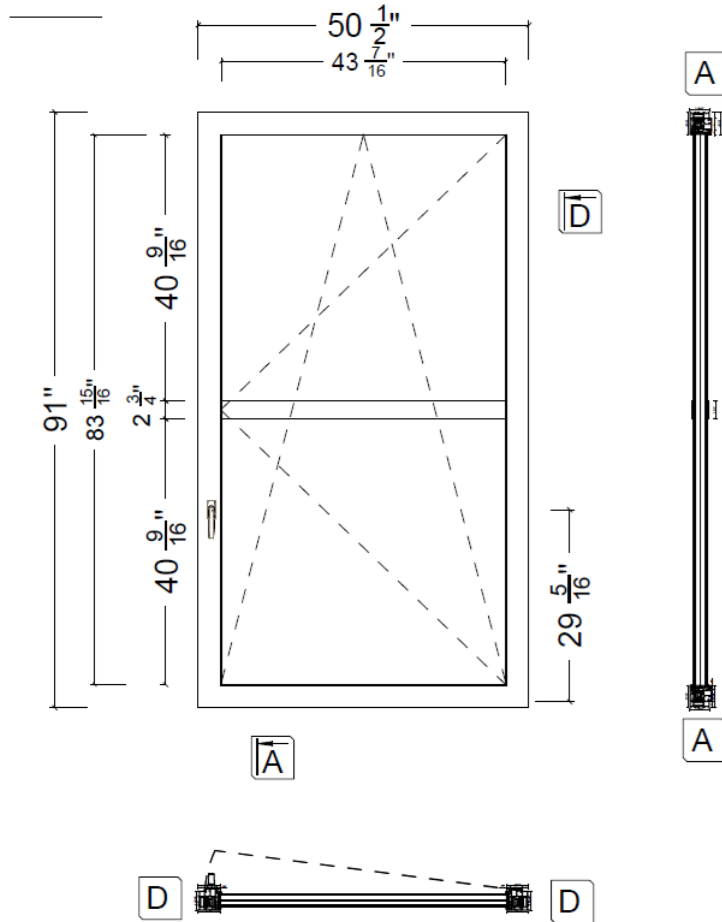
491 Broadway, interior, looking east toward Broadway. April 2026. (J. Peu-Duvallon)



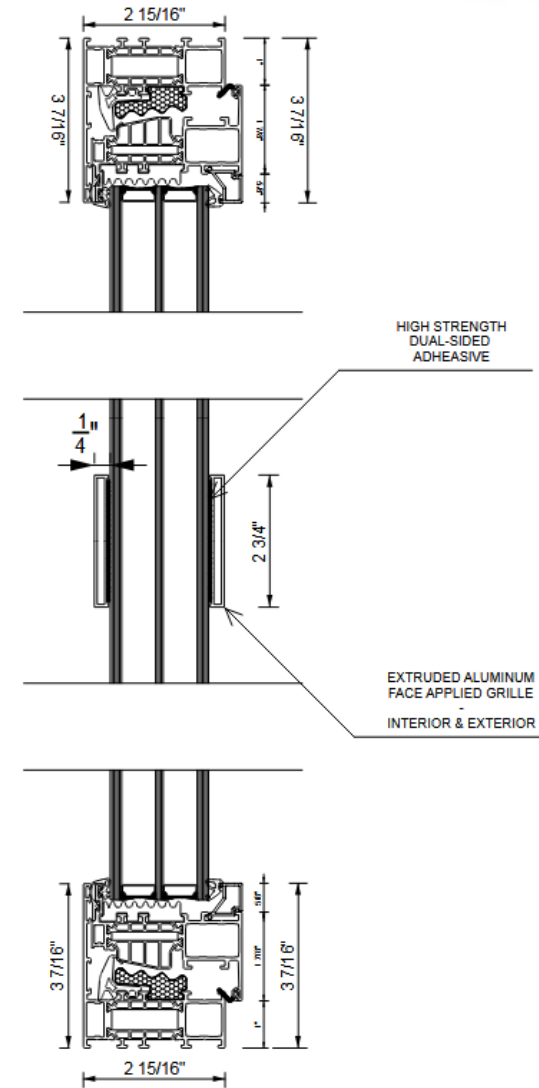
As-installed windows at east elevation. (Ikon)

491 Broadway, East Elevation: Window Bar Proposed at 9th Floor

EXTERIOR
ELEVATION
VIEW



Enlarged proposed vertical section for windows at Broadway elevation. (Ikon)



Enlarged proposed vertical section for windows at Broadway elevation. (Ikon)

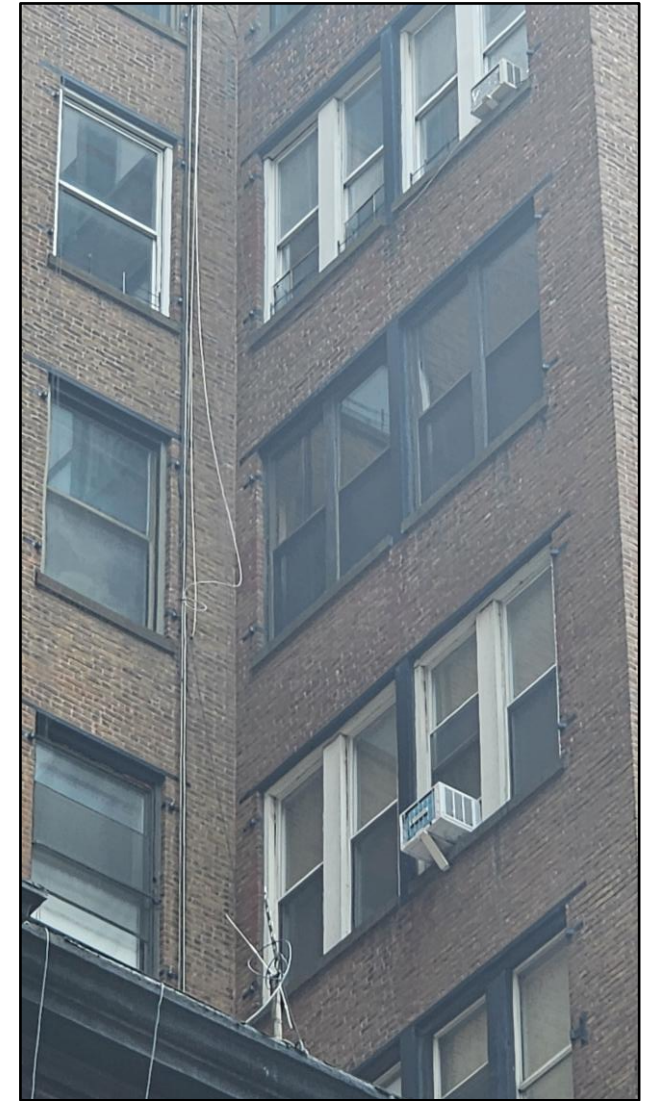
491 Broadway, West Lot Line Return Wall: Previous Condition at 9th Floor Windows



Previous windows at west lot line return wall. Summer 2025. (Metamechanics)



Previous windows at west lot line return wall, zoomed in. Summer 2025. (Metamechanics)



Previous windows at west lot line return wall, zoomed in. Summer 2025. (Metamechanics)

491 Broadway, West Lot Line Return Wall: Current Condition at 9th Floor Windows



Windows replaced at west lot line return wall. April 2026.
(J. Peu-Duvallon)

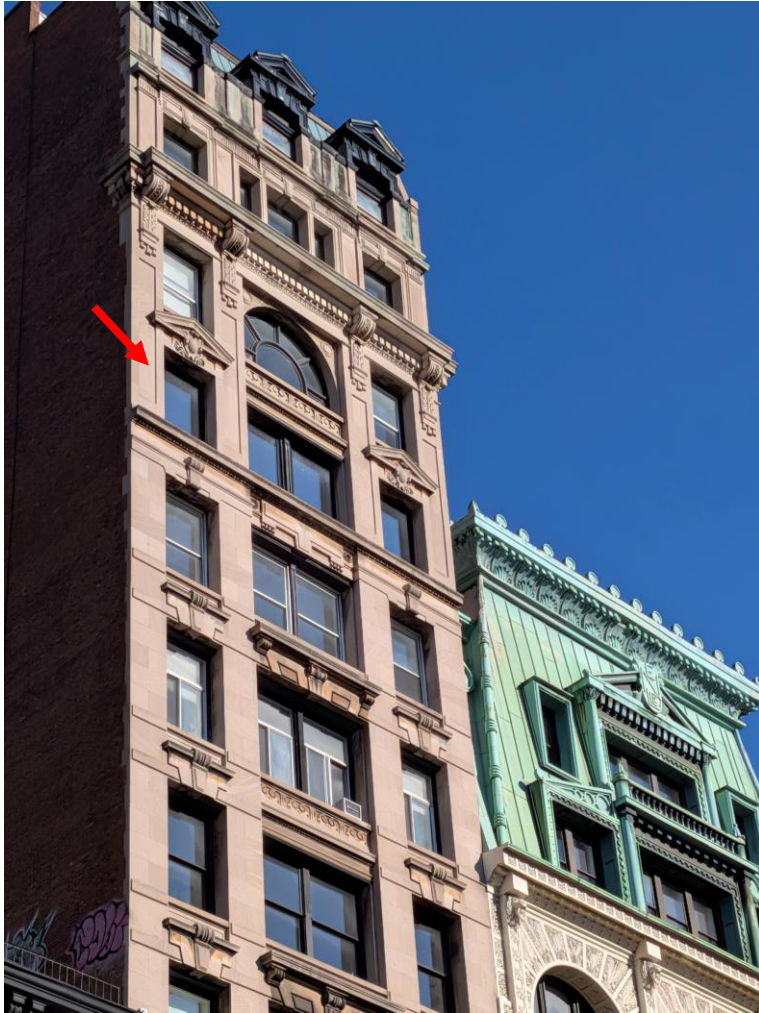


Windows replaced at west lot line return wall,
zoomed in. April 2026. (J. Peu-Duvallon)

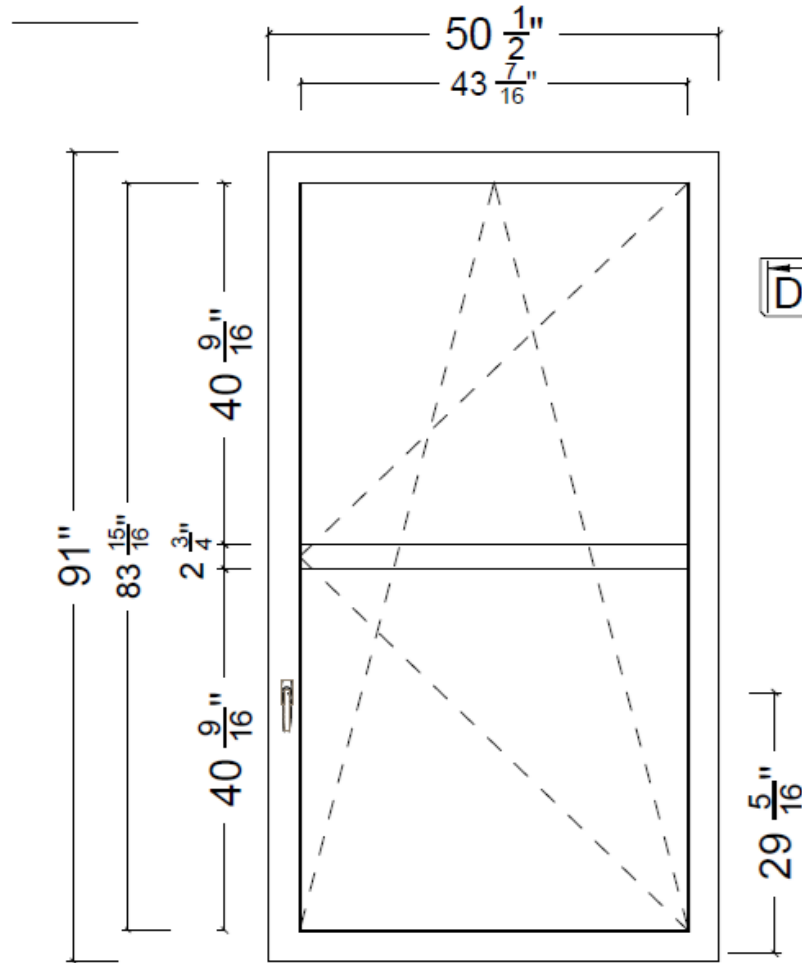


Windows replaced at west lot line return wall, seen from
the interior. April 2026. (J. Peu-Duvallon)

491 Broadway: Conclusion



Current condition of windows at 9th floor, at the Broadway elevation. April 2026. (J. Peu-Duvallon)



Proposed horizontal bar at Broadway elevation windows. (Ikon)



As-installed windows at the west lot line return wall. April 2026. (J. Peu-Duvallon)