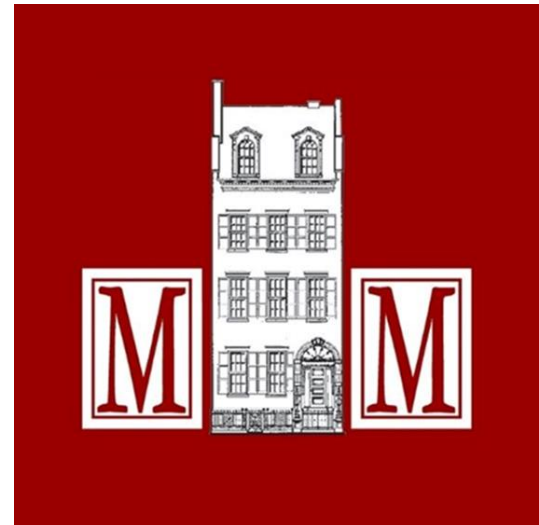




Merchant's House Museum



NY1's Indomitable Cheryl Wills



The Bond Street Area Was ‘the Place to Be’





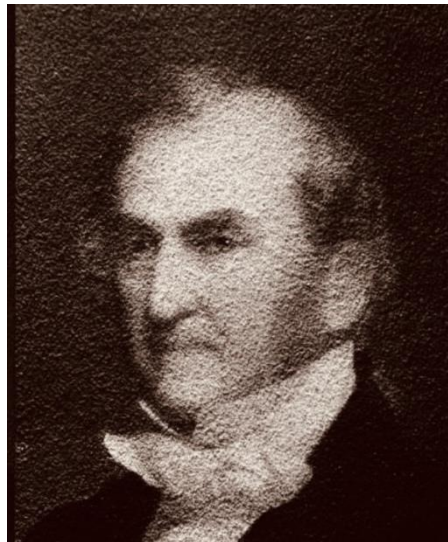
“Replete with Every Convenience”



FOR SALE.—The elegant three story dwelling House, No. 361 Fourth-street, (between Lafayette Place and the Bowery.) built and occupied by the subscriber. Lot $24\frac{1}{2}$ feet by 130. House 54 feet deep, and replete with every convenient. It can be seen from 1 to 4 o'clock. Apply to **JOSEPH BREWSTER**, on the premises, or at 166 Water-street. dec 30 eod2w

Meet the Tredwells

Eliza, Seabury, and Their Eight Children



Gertrude Tredwell (1840-1933)

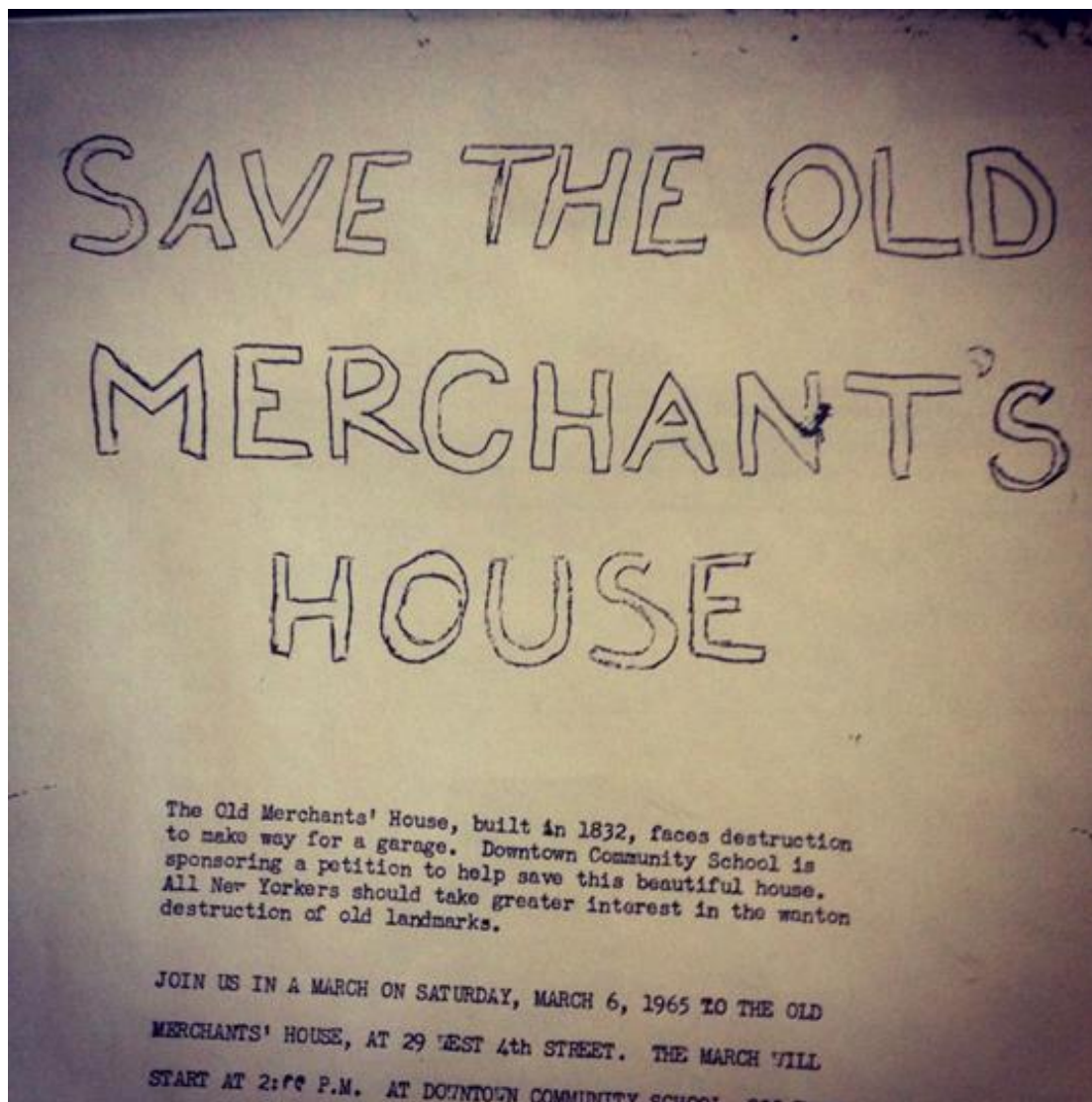




GEORGE CHAPMAN



March 6, 1965 ... Children's March!



Where Have All The Flowers Gone?

By Pete Seeger
Arranged by Kaiserin Rebecca

Allegro

mf

5 *f*

9

Copyright © 1961 (Renewed) by Sanga Music, Inc. All Rights Reserved Used by Permission

April 19, 1965 ... NYC Landmarks Law

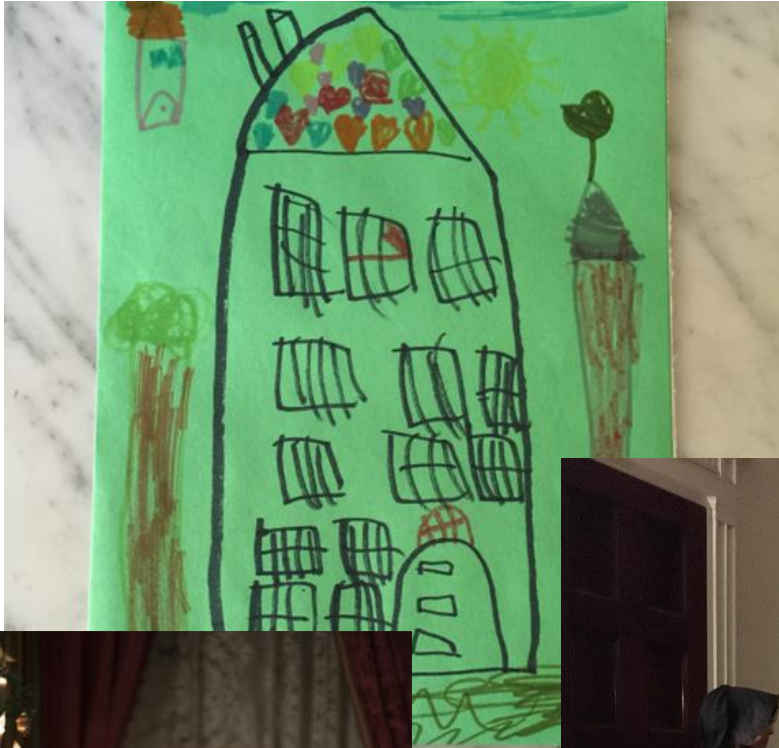


Landmark Designations: Federal, State & City



- 1965, *First* landmark in Manhattan at the *first* meeting of the LPC
- 1966, National Historic Landmark
- 1977, National Register of Historic Places & NYS Register of Historic Places
- 1981, Interior NYC landmark
- 2026, One of only 125 NYC exterior & interior landmarks and
- One of only 6 residences

Mission: Educational Programming



Mission: Collections Care & Conservation



Mission: Preservation of Our 1832 Landmark Building



Current City Investment: \$5.2 Million



**A Decades Long & Expensive History of Damage
*Caused by Work Performed at Adjoining & Nearby Property***



A Whirlwind Tour of the Merchant's House

Ground Floor / Kitchen



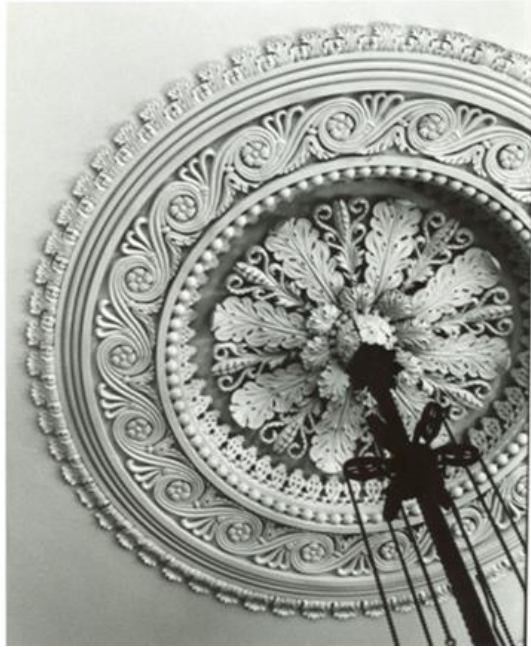
Ground Floor / Family Parlor



1st Floor / Greek Revival Double Parlor



1832 Ornamental Plasterwork “Finest Surviving from the Period”









2nd Floor / Seabury Tredwell's Bedroom



2nd Floor / Eliza Tredwell's Bedroom



4th Floor / Irish Servants' Bedroom



Rear Garden







The Passageway is Hidden below the Built-in Storage between the Two Main Bedrooms



Lifting the Cover Reveals the Hatch Opening



The Opening Is about Two Feet Square

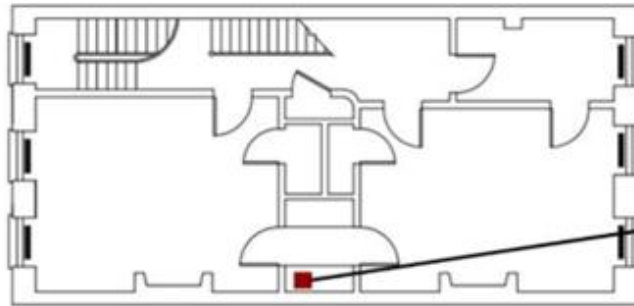


A Crude Ladder Descends 15 Feet



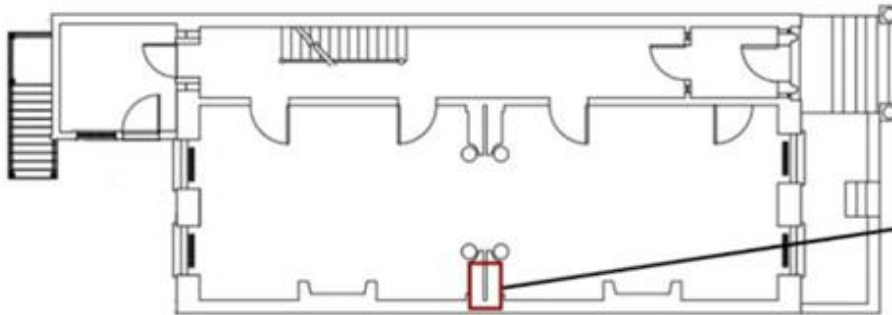
View Looking Up to the Hatch Opening





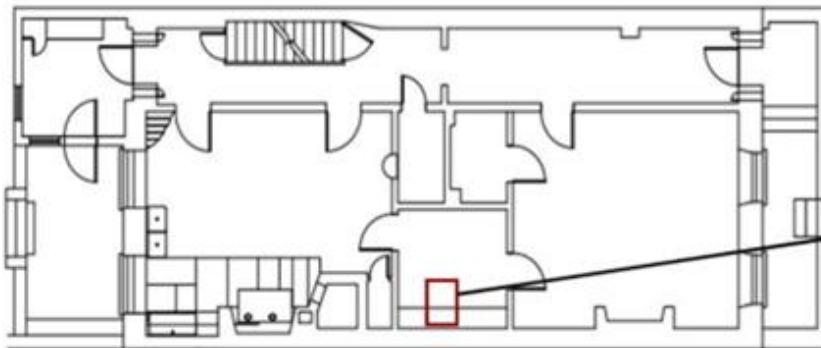
2nd Floor
Bedroom Level

Entrance to Passageway



1st Floor
Parlor Level

Current Location
of Passageway

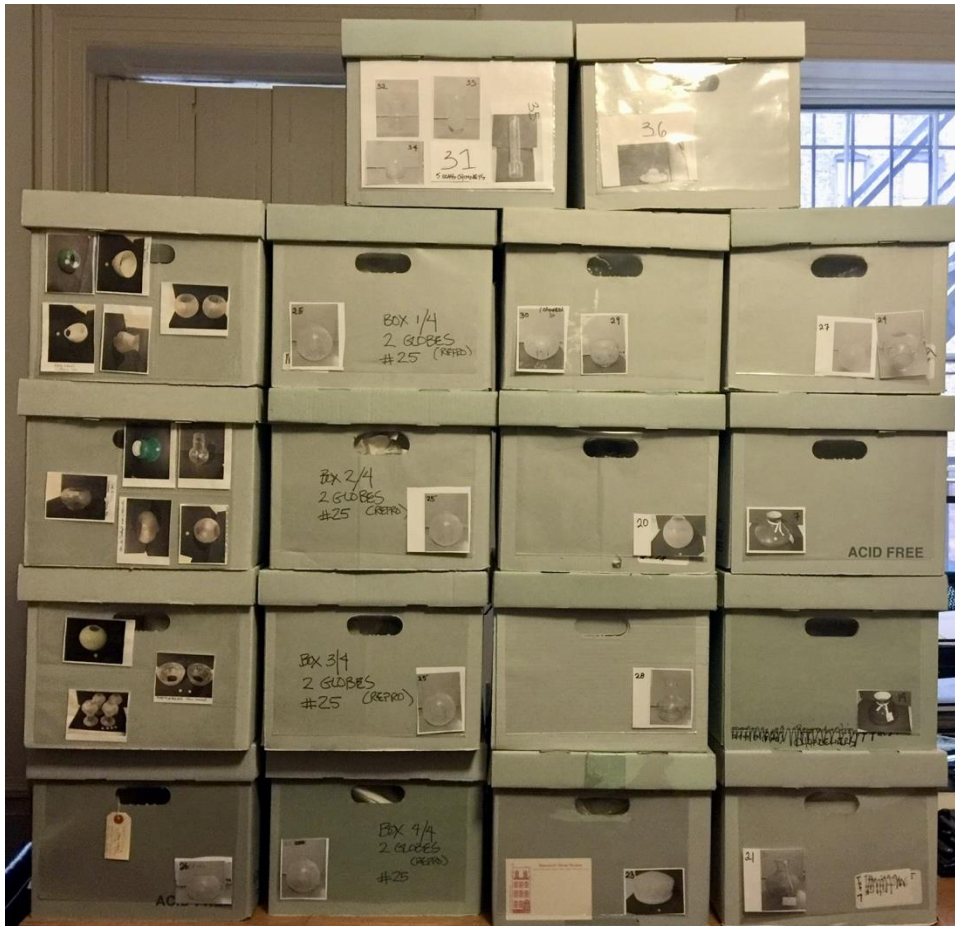


Ground Floor Level

Original Location
of Passageway

What Happens ... IF?

Protect the Original Tredwell Collection



- 3,000 Items
- 4 Floors, 10,000sf
 - Packing
 - Transporting
 - Storage (24 months)

Est. \$1.75 million (2023)

Then Secure Our 1832 Landmark Interior



Erect padded scaffolding
to stabilize, cushion,
and secure
the original plaster
walls, ceilings, and
decorative elements.

Est. \$1.35 million (2024)

And ... Close the Museum to the Public

Toting It All Up ...

- Office Rental & Lost Museum Revenue, 30 months
\$1 mil
- Off-site Storage of the Tredwell Collection, 24 months
\$1.75 mil
 - Securing the Landmark Interior, 24 months
\$1.35

Total \$4.1 mil



Landmarks Preservation Commission

LPC's Mission
(on behalf of the people of New York)

“to protect the special places and buildings that bring the City’s remarkable history and heritage to life, thus preserving them for future generations.”

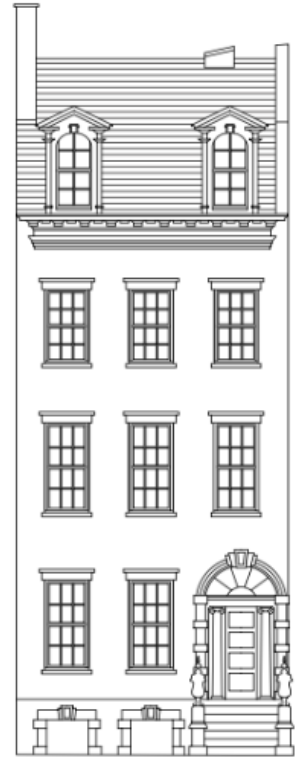
“... an entirely unique,
enormously treasured,
fragile
and irreplaceable
landmark and museum.”

*Community Board 2 Resolution
to deny the application, May 24, 2018*

SAVE

**THE LANDMARK
MERCHANT'S**

HOUSE!



**A
THOUSAND
THANKS**

(SHAKESPEARE)