

Eric Sheffield Architect

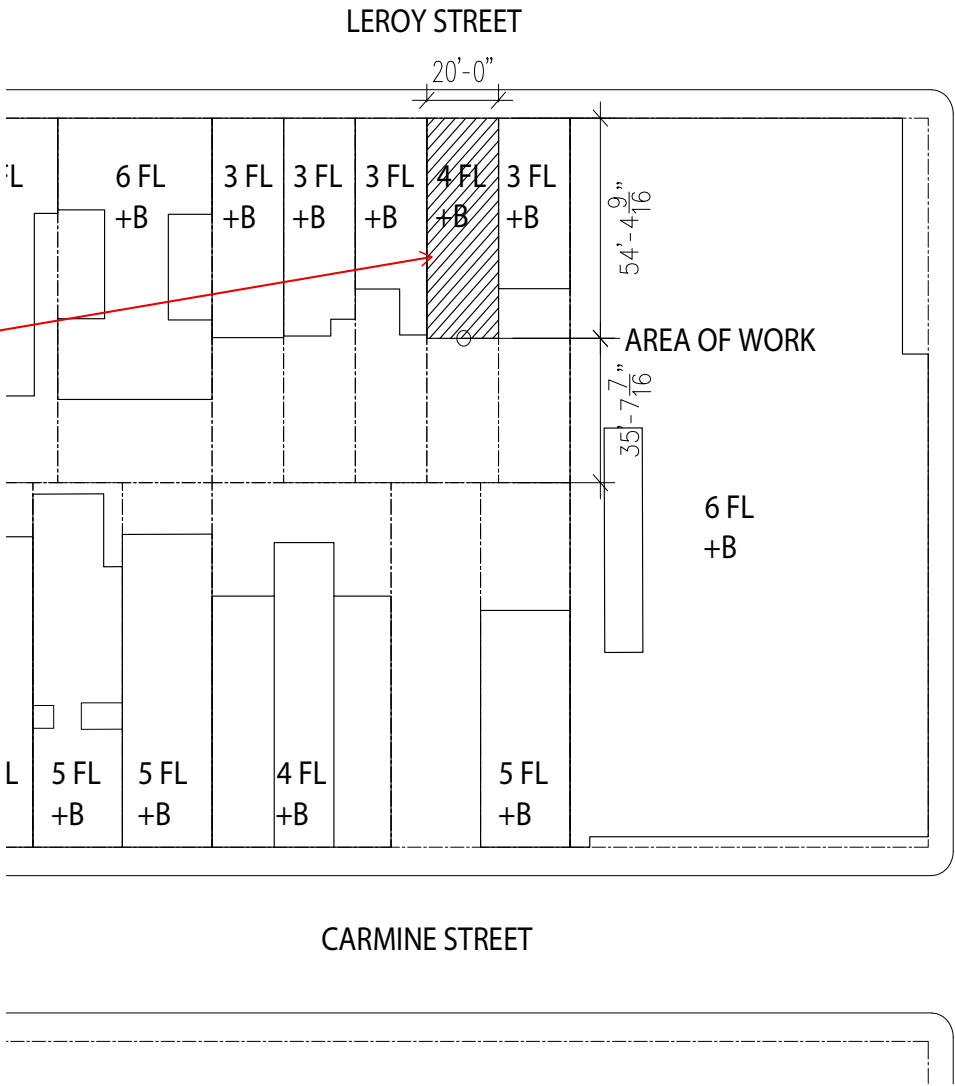
88 Charles Street - Suite 1C | New York, NY 10014

14 Leroy Street

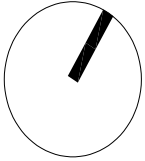
LPC Presentation 06.27.2025

LPC Presentation

Greenwich Village Historic District Extension II



14 LEROY STREET
BLOCK: 586
LOT: 16
ZONING DISTRICT: R6
MAP:12a
USE GROUP: 2
CONST. CLASS
CLASS III
OCCUPANCY CLASS: R-3
RESIDENTIAL



Greenwich Village
Historic District Extension II
Borough of Manhattan, NY
Landmarks Preservation Commission

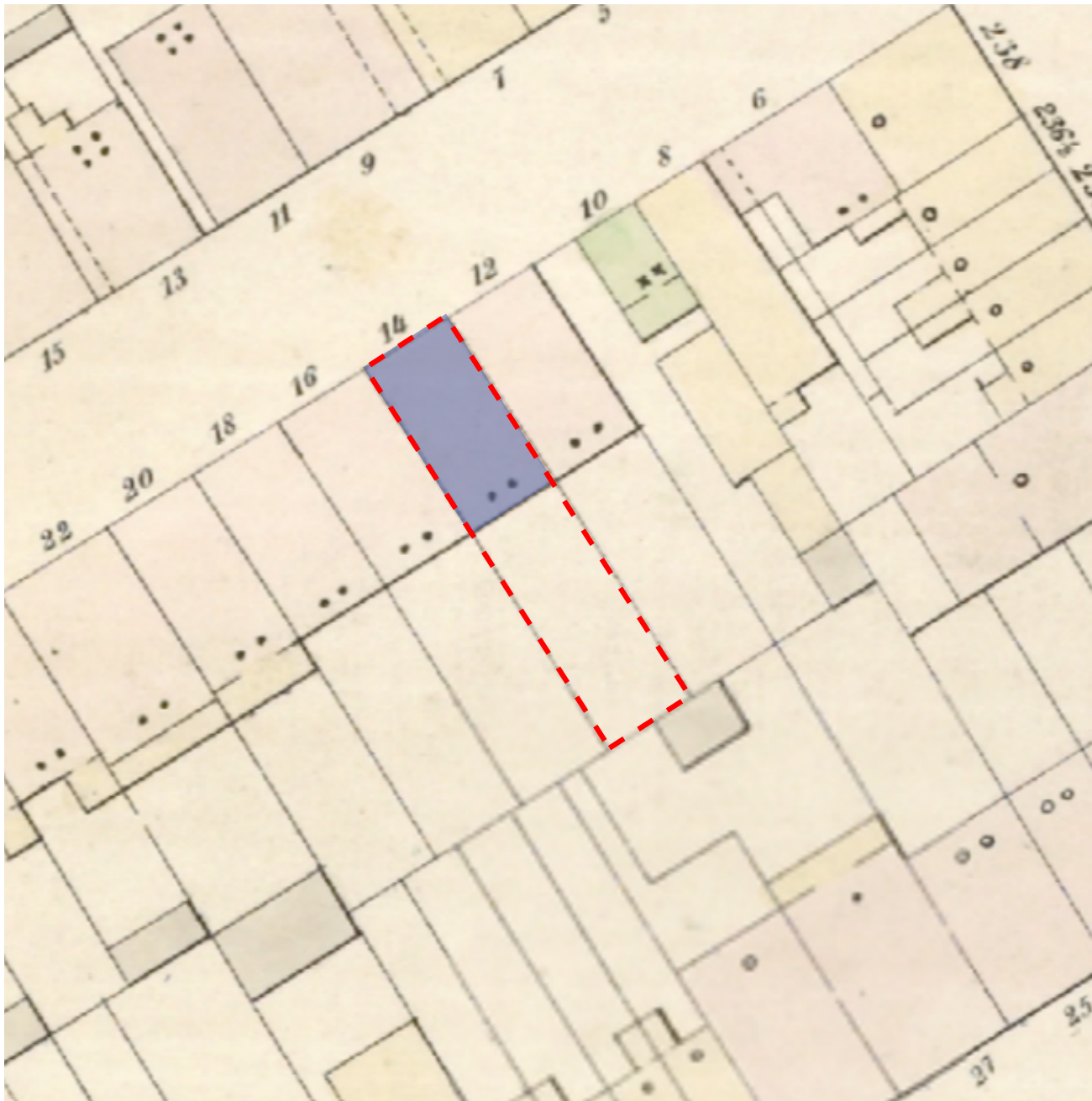
Calendared: June 23, 2009
Public Hearing: October 27, 2009
Designated: June 22, 2010

Boundary of District Extension

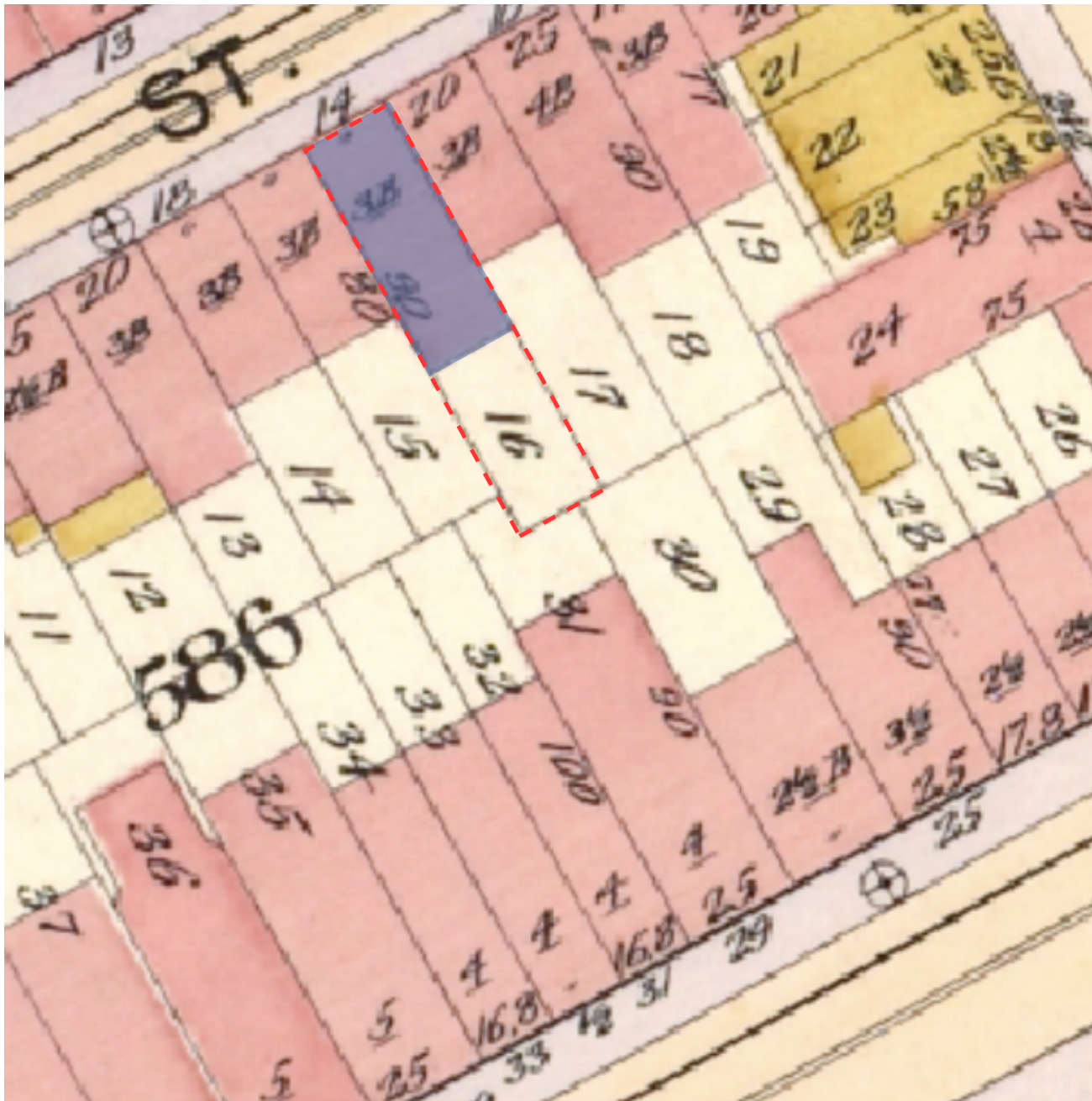


88 Charles Street - Suite 1C | New York, NY 10014

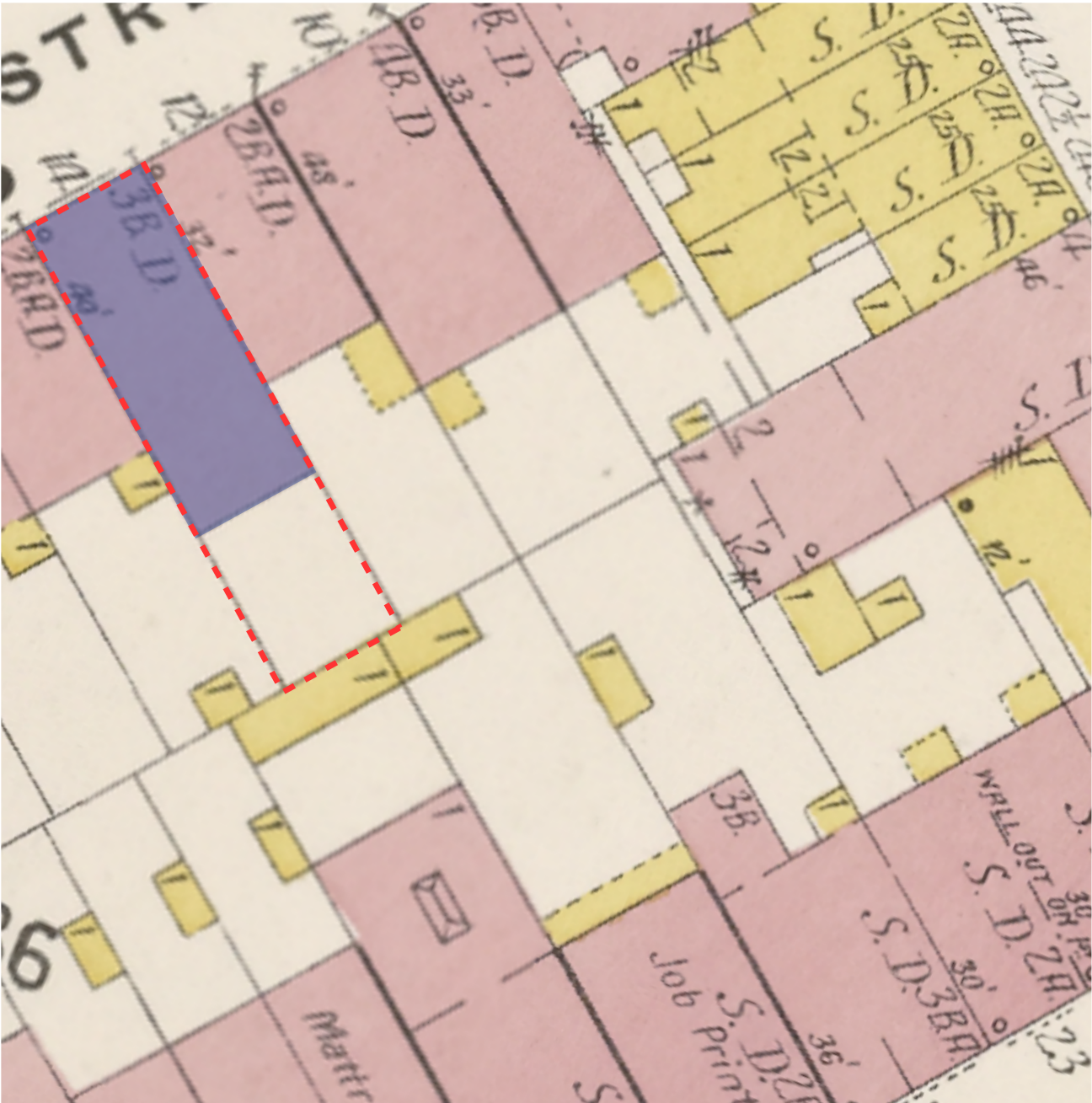
06.27.2025
14 LEROY STREET
Eric Sheffield Architect



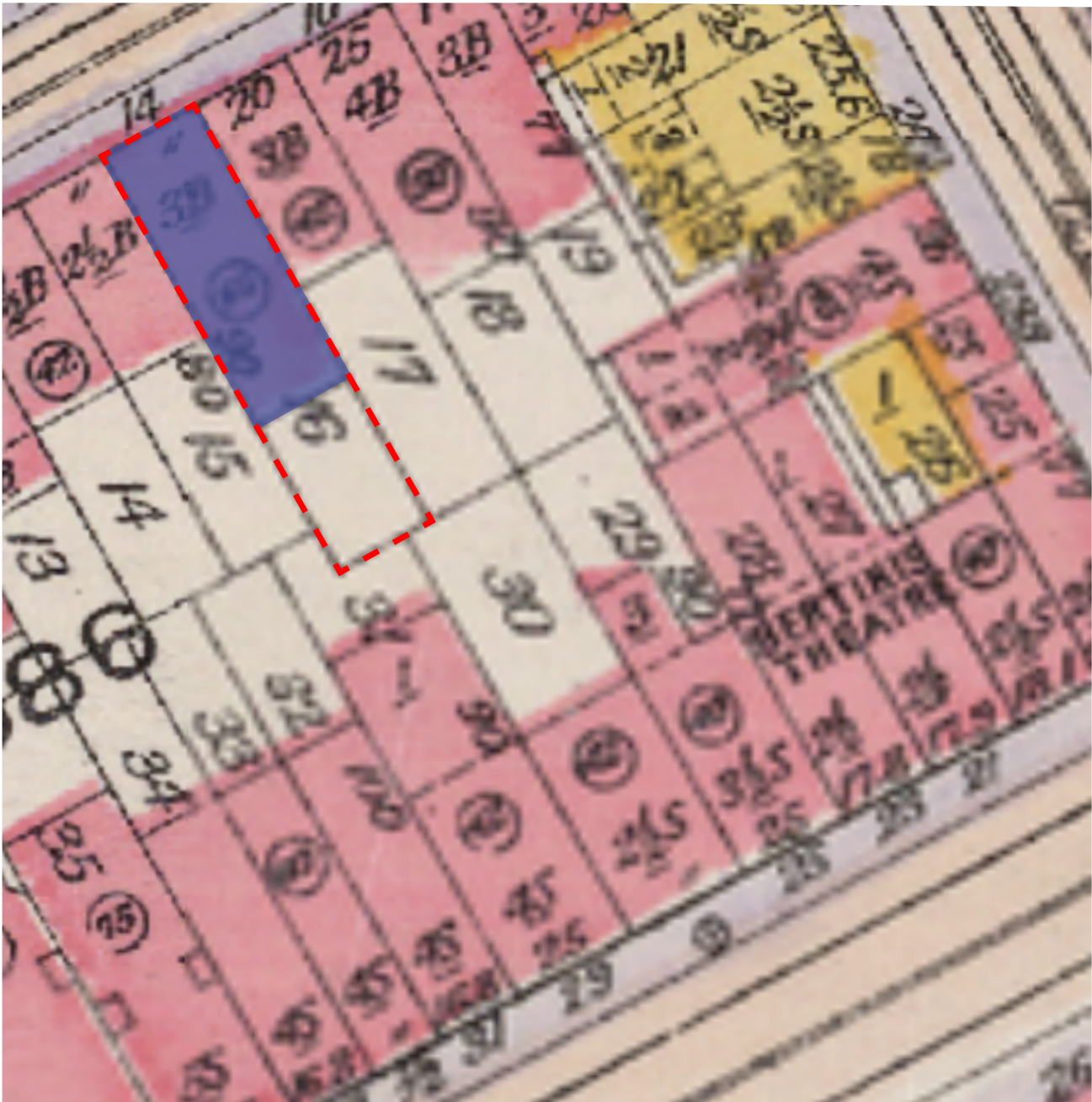
14 Leroy Street 1854 Sanborn Map



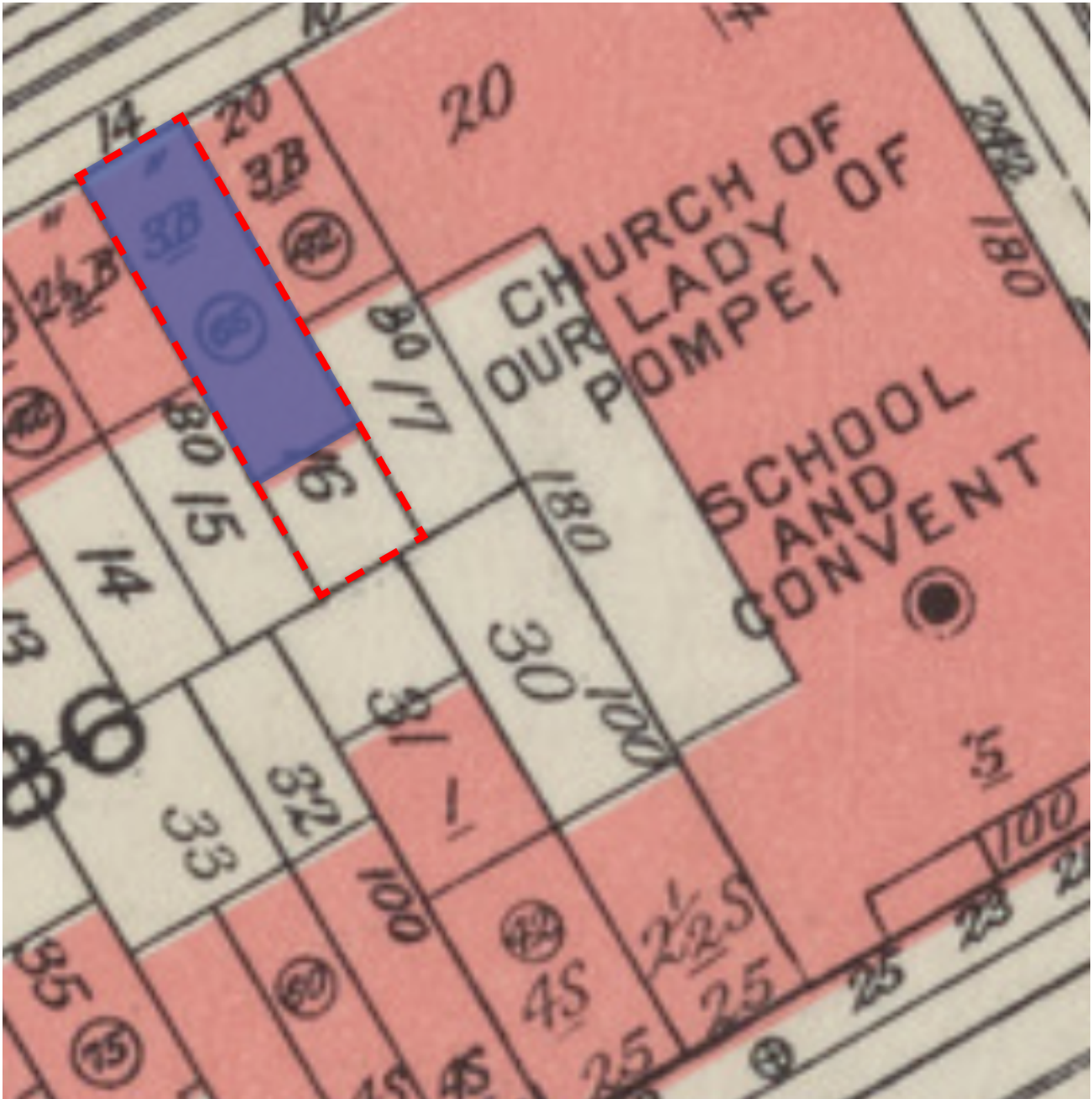
14 Leroy Street 1899 Sanborn Map



14 Leroy Street 1904 Sanborn Map



14 Leroy Street 1916 Sanborn Map



14 Leroy Street 1955 Sanborn Map



14 Leroy Street 1940 Tax Photo



14 Leroy Street 1980 Tax Photo



27 Carmine Street 1940 Tax Photo



27 Carmine Street 1980 Tax Photo



29 Carmine Street 1940 Tax Photo



29 Carmine Street 1980 Tax Photo



31 Carmine Street 1940 Tax Photo



31 Carmine Street 1980 Tax Photo



Photo from across Carmine Street



Photo of 14 Leroy Street rear facade and empty lot



Photo of 14 Leroy Street facade zoomed in through gate



24 JUNE 2015
TO LPC

Alterations to:

14 Leroy St
Darling LLC

14 Leroy St
New York, NY 10014

A-201.00

EXTERIOR ELEVATIONS

Previously approved LPC drawing set showing previous and current rear elevations.

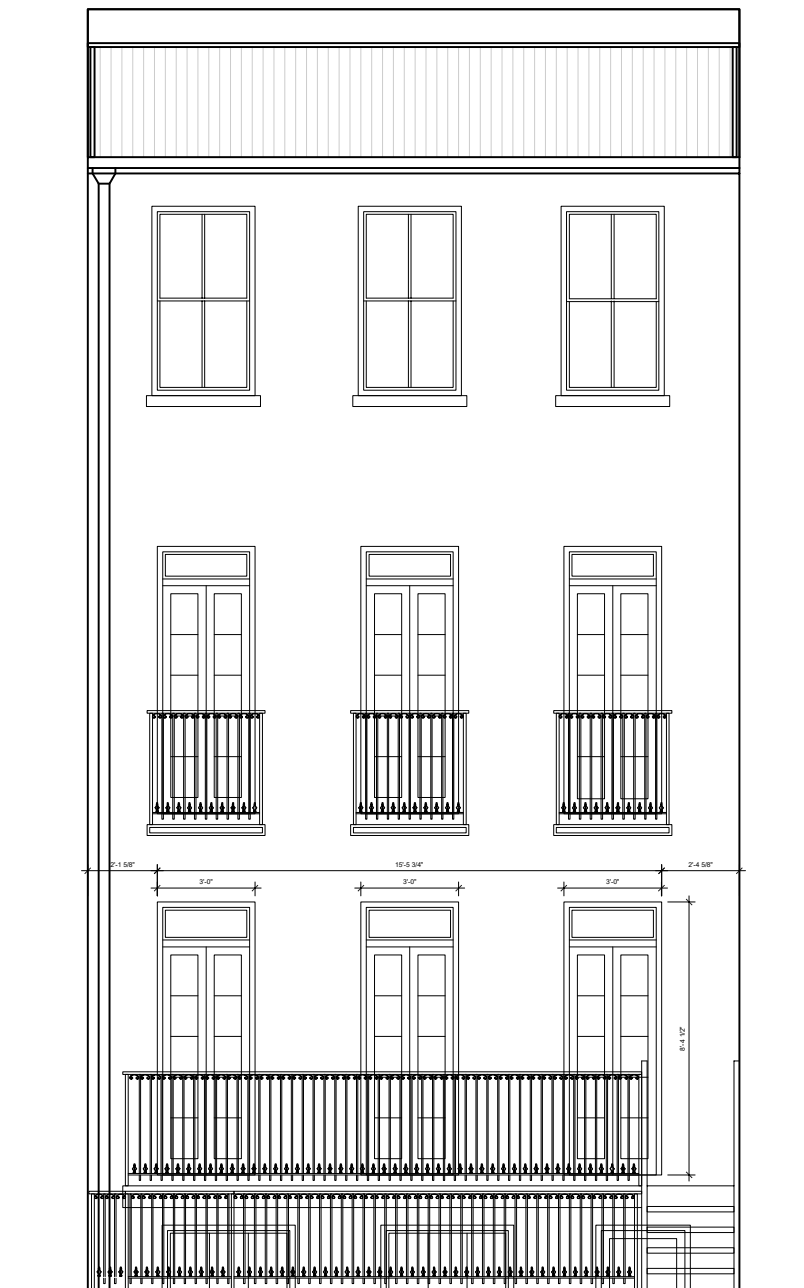


88 Charles Street - Suite 1C | New York, NY 10014

06.27.2025

14 LEROY STREET

Eric Sheffield Architect

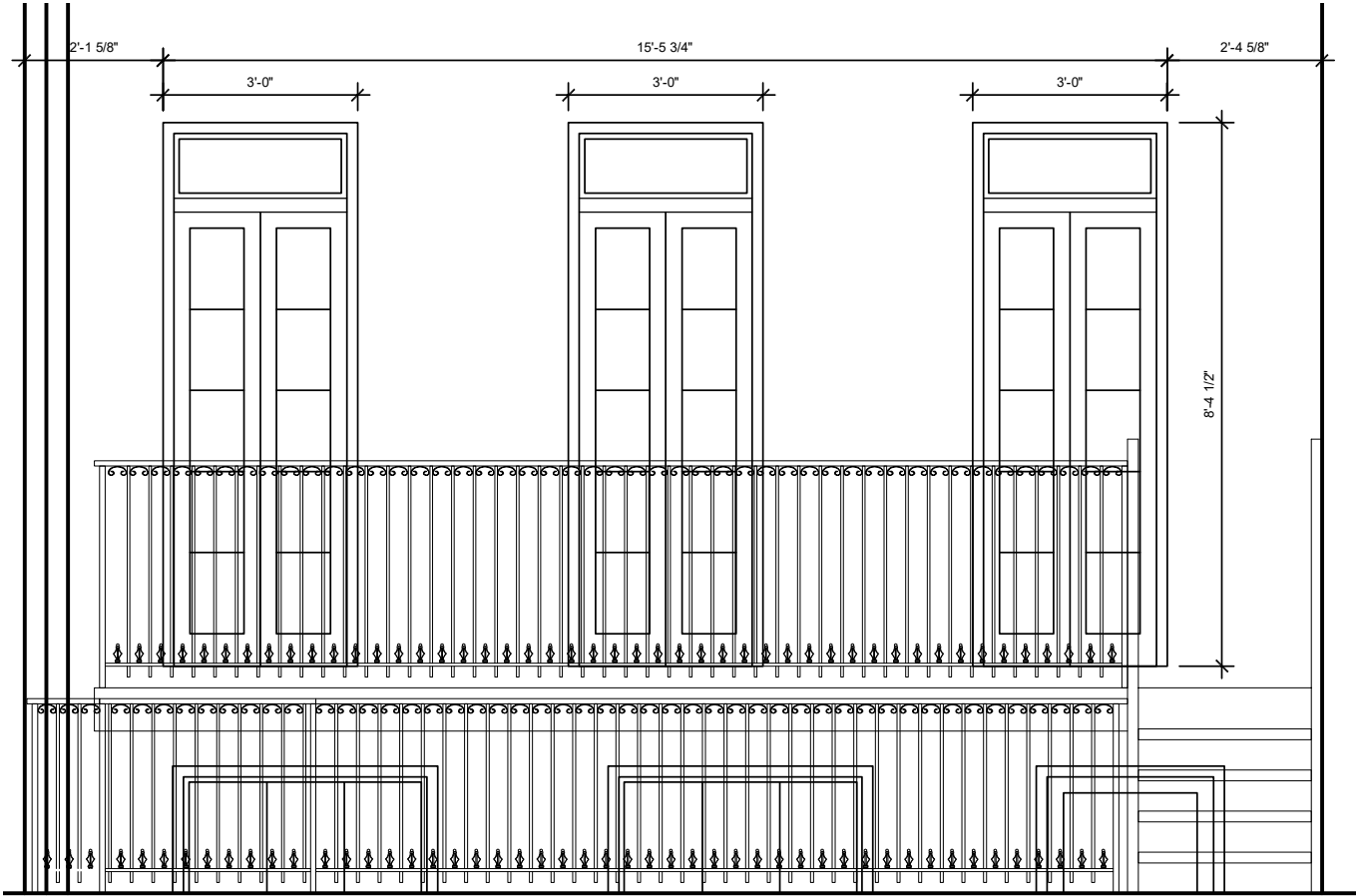


14 Leroy Street current rear facade elevation

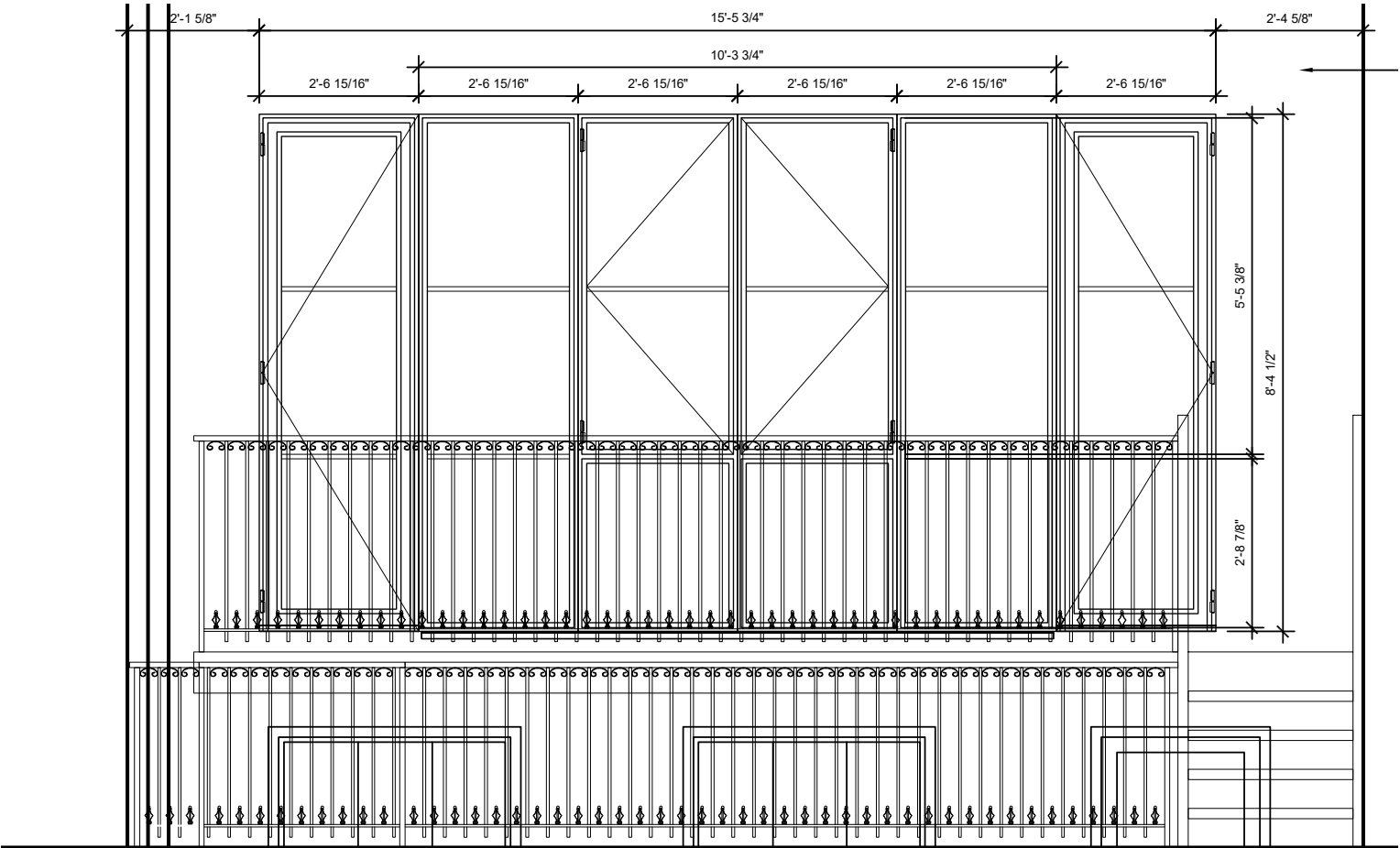


14 Leroy Street proposed rear facade elevation





14 Leroy Street current rear facade elevation



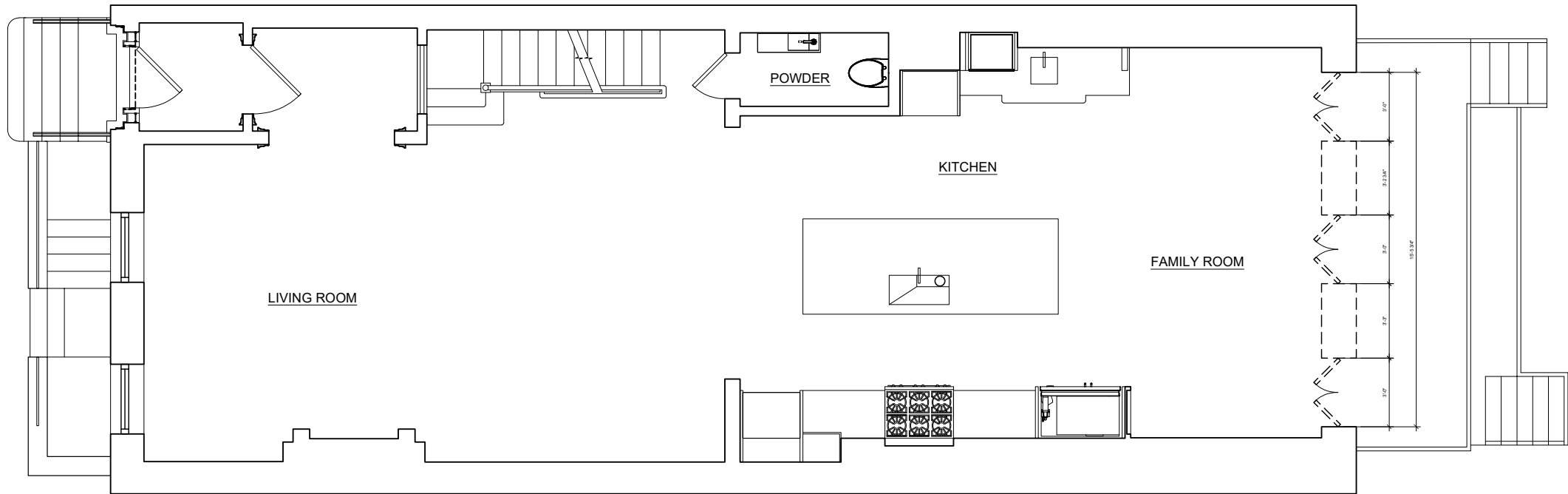
14 Leroy Street proposed rear facade elevation



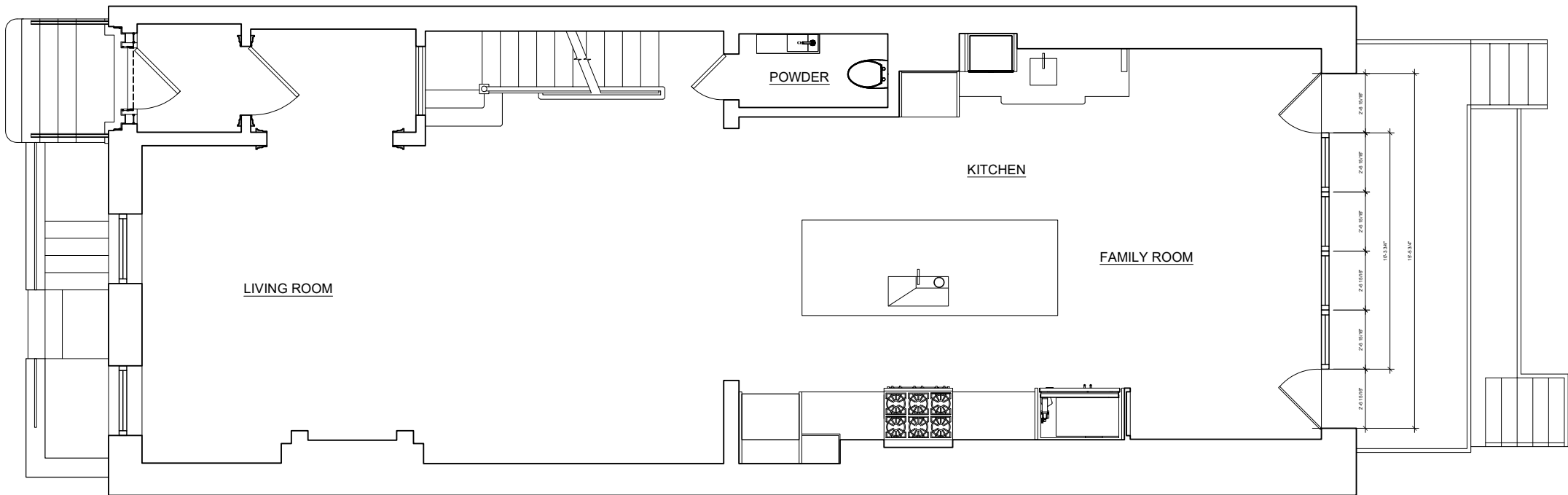
88 Charles Street - Suite 1C | New York, NY 10014



06.27.2025
14 LEROY STREET
Eric Sheffield Architect



14 Leroy Street existing first floor plan



14 Leroy Street proposed first floor plan



14 Leroy Street proposed rear elevation rendering



14 Leroy Street proposed rear elevation with existing fence and trees



88 Charles Street - Suite 1C | New York, NY 10014



06.27.2025

14 LEROY STREET

Eric Sheffield Architect