

Timberland



550 Broadway - New York, NY 10012

550 Broadway, Manhattan, Block: 497, Lot: 11, Year Built: 1854



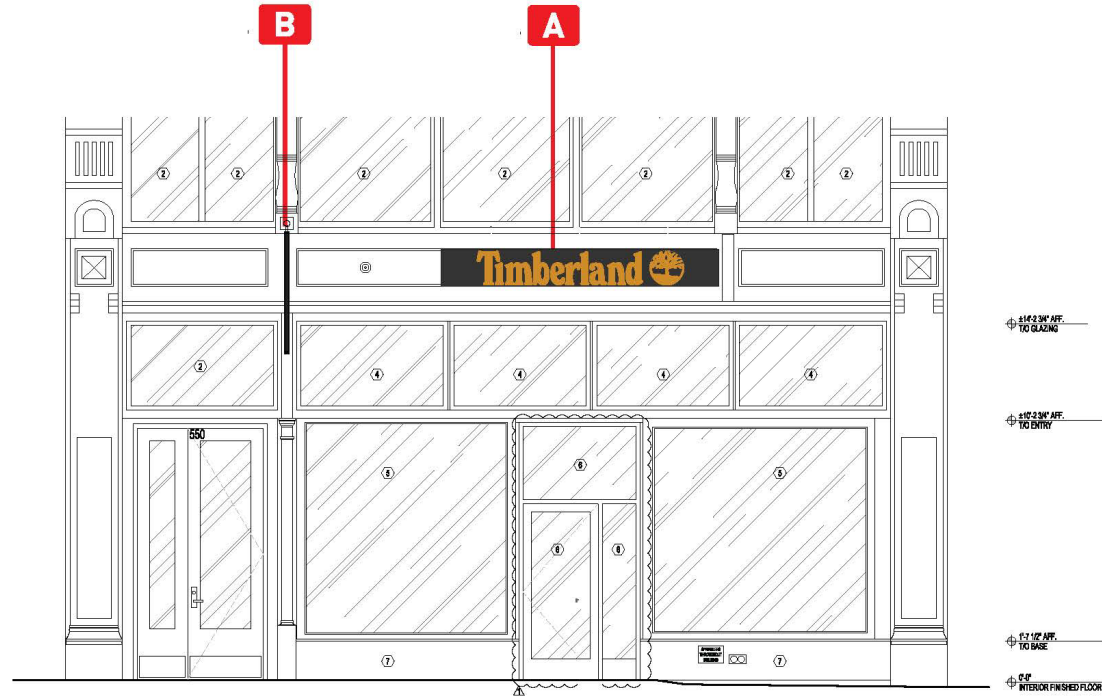
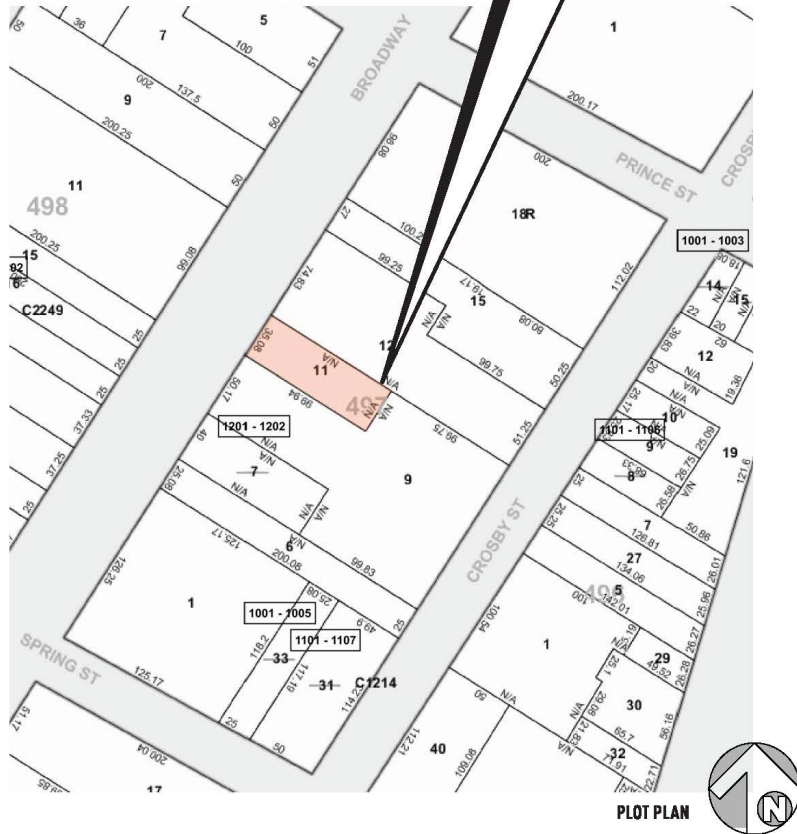
1940



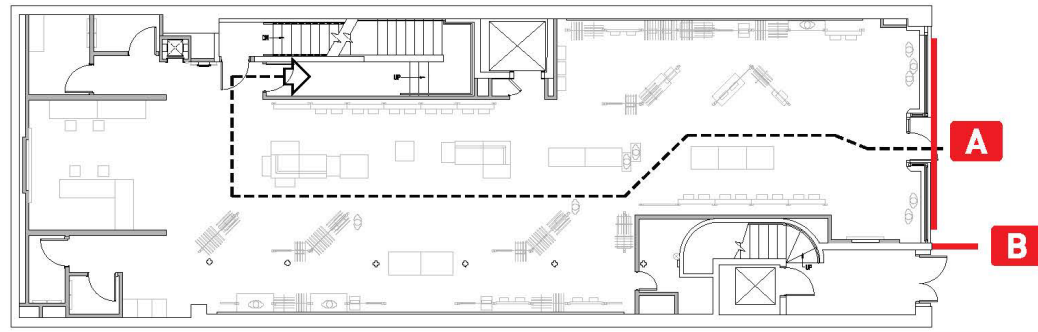
2022



2023

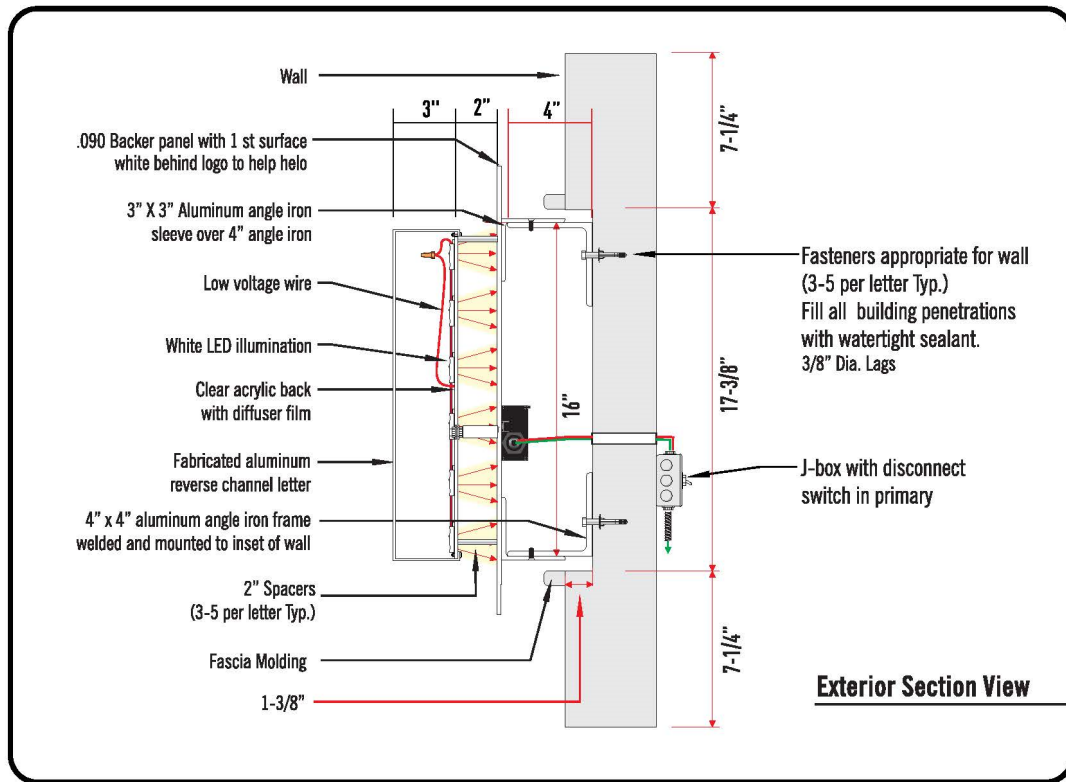


STORE FRONT ELEVATION / SCALE: 3/16" = 1'-0"



PLOT PLAN

- A** MANUFACTURE AND INSTALL REVERSE PAN CHANNEL HALO LIT LETTERS AND LOGO WITH BACKER PANEL
QUANTITY: 1 MANUFACTURE & INSTALL
- B** MANUFACTURE AND INSTALL D/F NON-ILLUMINATED HANGING BANNER
QUANTITY: 1 MANUFACTURE & INSTALL



COLOR KEY

P1	PAINT	MATTHEWS # SATIN BLACK
P2	PAINT	MATTHEWS # PAINT T/M TRUE WHEAT PANTONE 131 C (SATIN FINISH)
V1	VINYL	3M # DIGITAL PRINT T/M TRUE WHEAT PANTONE 131 C (OPAQUE VINYL)
V2	VINYL	3M # MATTE WHITE 220-20 APPLIED 1 ST SURFACE ON BACKER PANEL TO HELP HALO ILLUMINATION.

NOTE: THE COLORS DEPICTED ON THIS RENDERING REPRESENT COLOR INTENT ONLY AND MAY NOT MATCH ACTUAL COLORS ON FINISHED PRODUCT. PLEASE REFER TO COLOR CALL-OUTS AND SPECIFIED VENDOR SAMPLES FOR APPROVED COLOR SPECIFICATIONS.



FABRICATION SPECIFICATIONS

1	BACKER PANEL	CONSTRUCTION	FABRICATED ALUMINUM
		TYPE	S/F NON-ILLUMINATED
		PAINT COLOR	PER COLOR KEY (P1)
		VINYL COLOR	PER COLOR KEY (V2)
		APPLIED	1 ST SURFACE
		NOTE:	BACKER CABINET TO HOUSE ALL POWER SUPPLY AND LEFT SIDE TO HAVE A REMOVABLE PANEL FOR SURVIVE

2	TIMBERLAND REVERSE PAN	LIGHTING	WHITE LED
		FACE COLOR	PER COLOR KEY (P2)
		RETURN COLOR	PER COLOR KEY (P2)
		LETTER BACKS	CLEAR POLYCARB
		STAND OFF	2" OFF SURFACE
		STAND OFF COLOR	PER COLOR KEY (P1)

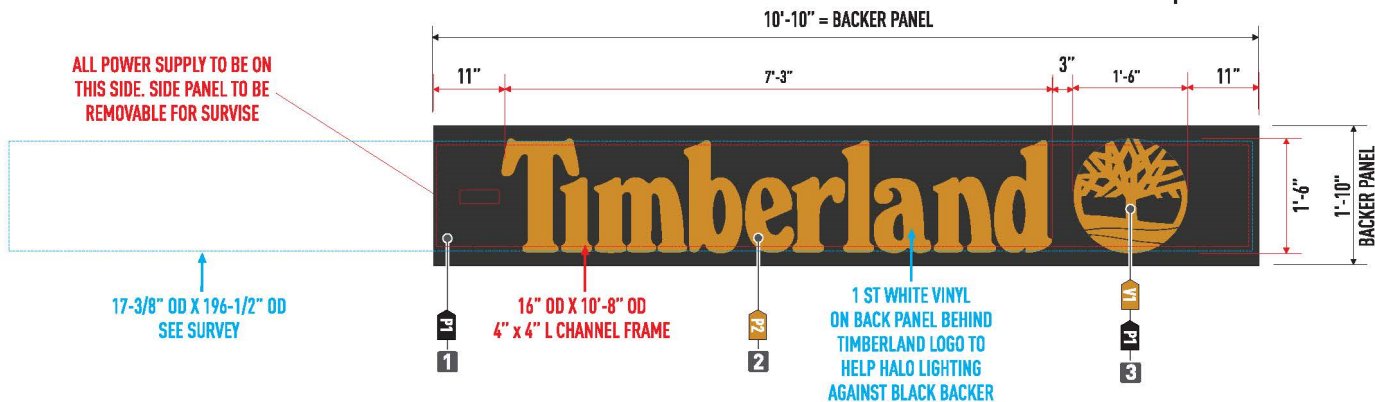
3	LOGO	LIGHTING	WHITE LED
		FACE COLOR	PER COLOR KEY (P1)
		RETURN COLOR	PER COLOR KEY (P1)
		LETTER BACKS	CLEAR POLYCARB
		VINYL COLOR	PER COLOR KEY (V1)
		APPLIED	1 ST SURFACE
		STAND OFF	2" OFF SURFACE
		STAND OFF COLOR	PER COLOR KEY (P1)

GENERAL NOTES

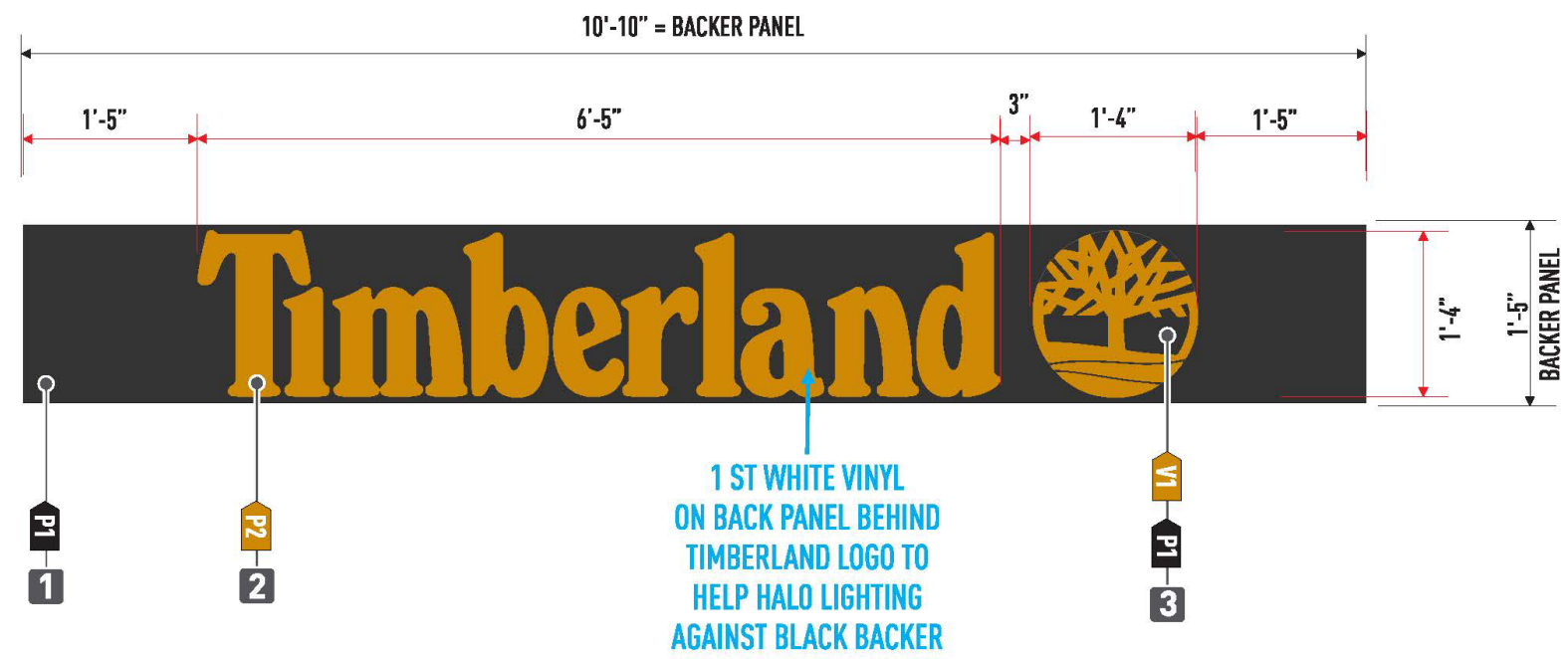
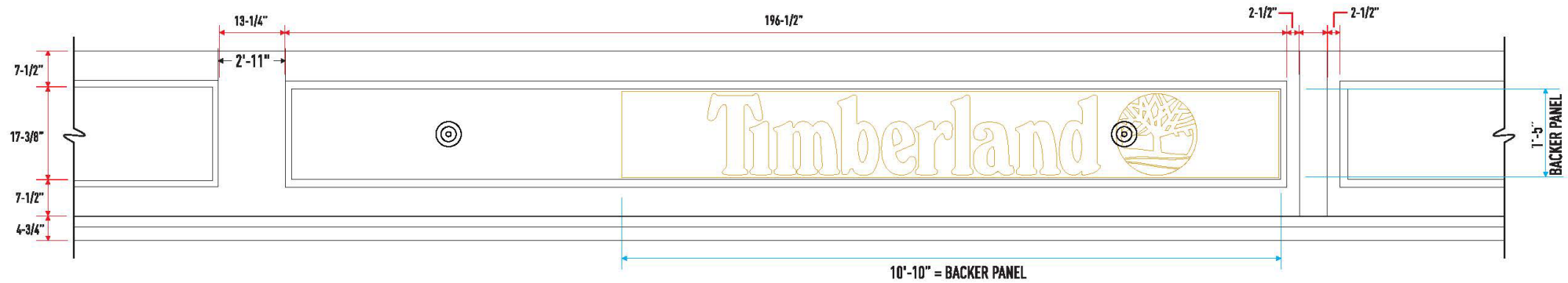
INSTALL ILLUMINATED CHANNEL LETTERS WITH BACKER PANEL WITH 3/8" LAGS

REVISIONS

1)	R1) CHANGE FACE COLOR TO TRUE WHEAT PMS 131 C (SL)
2)	R2) SHOW ATTACHMENT DETAILS FOR BLADE SIGN (SL)
3)	R3) ADD LOGO BACK TO STORE FRONT MAIN SIGN (SL)
4)	R4) 12/2/2022 - CHANGE TO REVERSE PAN HALO LIT AND FLAG BANNER (SL)
5)	R5) 12/16/2022 - CHANGE LAYOUT AND CONSTRUCTION (SL)
6)	R6) 1/10/2023 - UPDATE SPECS (SL)



NIGHT VIEW





FABRICATION SPECIFICATIONS		
1	FLAG MOUNTED CONSTRUCTION BANNER	HEAVY DUTY BANNER MATERIAL WITH DIGITAL PRINT GRAPHICS. BOTH SIDES OF HANGING BANNER NOTE: SEWN POCKETS ON TOP AND BOTTOM OF HANGING BANNER WITH WEIGHT BAR ON BOTTOM
2	ARM & PLATE CONSTRUCTION	EXISTING HANGING BAR NEED TO VERIFY ALL DIMENSIONS WITH SURVEY.

GENERAL NOTES

INSTALL ILLUMINATED D/F BANNER ON EXISTING HANGING BAR.

REVISIONS

1) X	
2)	
3)	
4)	
5)	

COLOR KEY

F1	FABRIC	HEAVY DUTY DIGITAL PRINT BANNER (BLACK BANNER)
C1	COLOR	MATTHEWS # PAINT T/M TRUE WHEAT PANTONE 131 C (SATIN FINISH)

NOTE: THE COLORS DEPICTED ON THIS RENDERING REPRESENT COLOR INTENT ONLY AND MAY NOT MATCH ACTUAL COLORS ON FINISHED PRODUCT. PLEASE REFER TO COLOR CALL-OUTS AND SPECIFIED VENDOR SAMPLES FOR APPROVED COLOR SPECIFICATIONS.

B MANUFACTURE AND INSTALL D/F NON-ILLUMINATED HANGING BANNER
 QUANTITY: 1 MANUFACTURE & INSTALL
 SCALE: 1-1/2" = 1'-0"



NOTE: SECURE BANNER TO EXISTING HOOK ON THE SIDE OF THE BUILDING
 PHOTO INLAY - NTS



