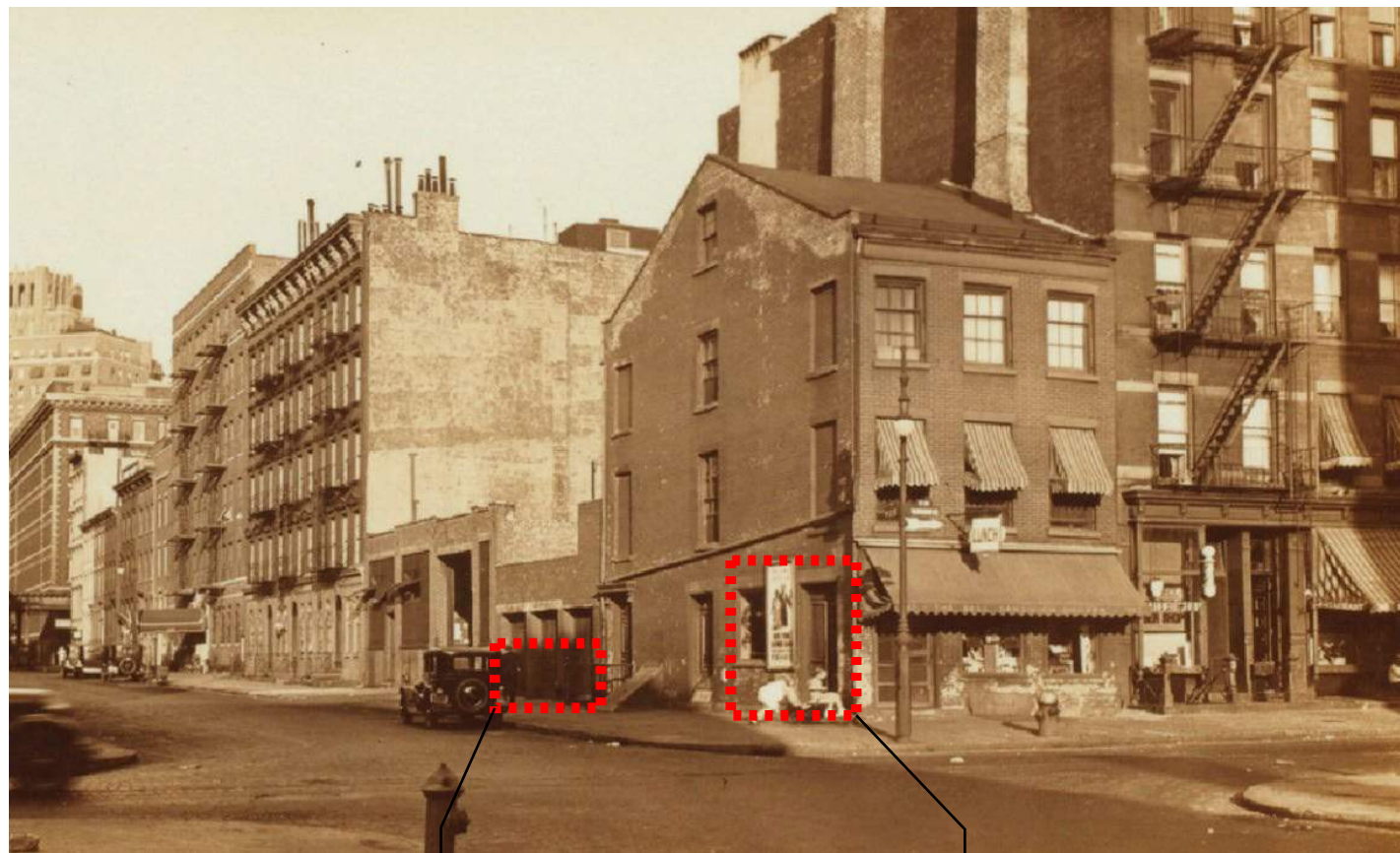




1932 (NYPL)



c1940 (Municipal Archives)



1932 (NYPL)

No masonry at low sections of openings

Door and window opening on north facade



c1940 (Municipal Archives)



c1940 (Municipal Archives)



1963-67 (LPC)



c1940 (Municipal Archives)

Window opening with
stone lintel



1963-67 (LPC)

Window opening with
stone lintel





Front Facade, Washington Street



Storefront, Washington Street



West 12th Street, Looking West



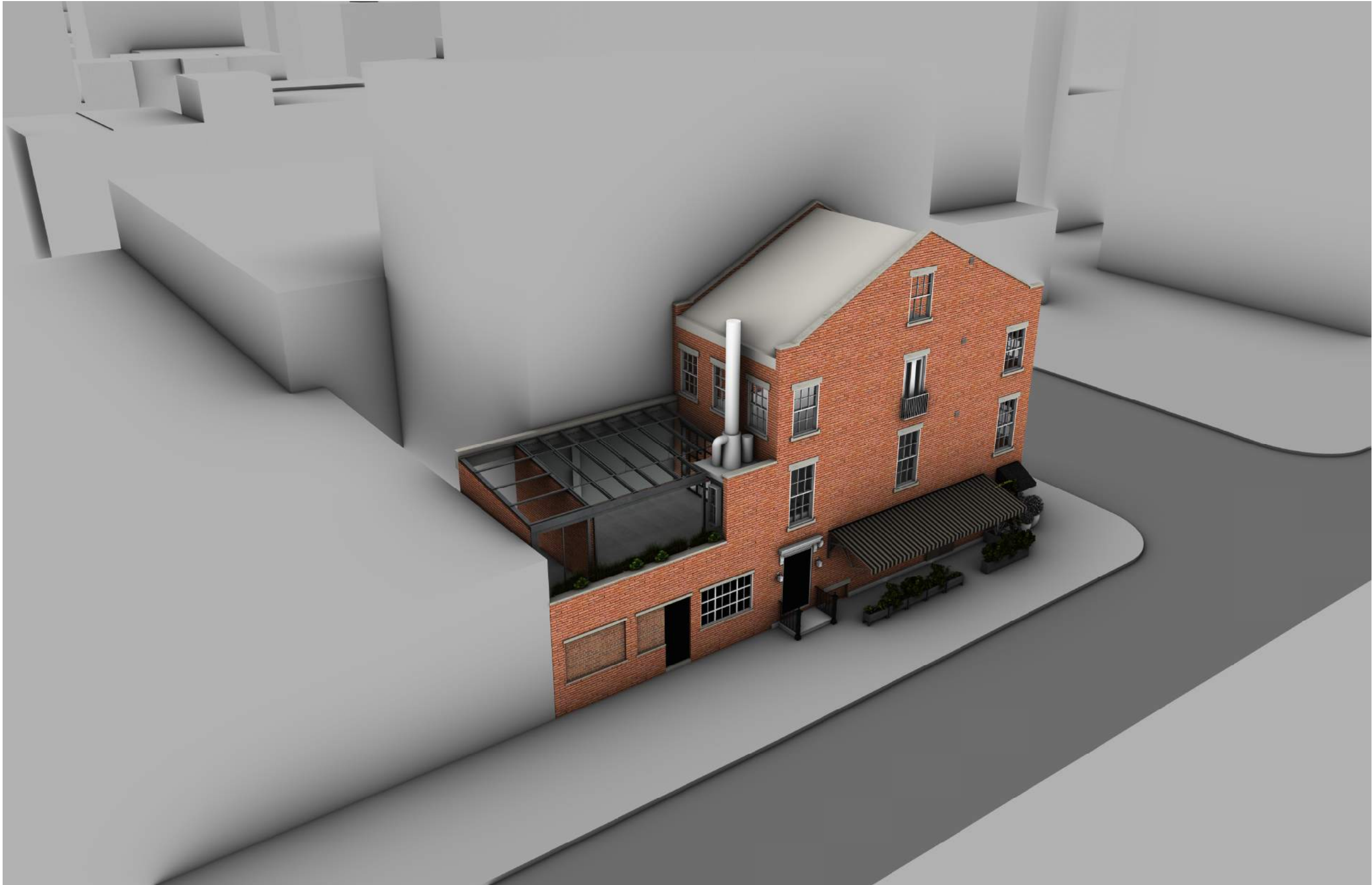
Rear Facade



Infill masonry and steel panels previously approved for removal, under Alt-2 121090283, refer to drawings and LPC application for clarification of scope



Coping, parapet and stone lintel removed under Alt-2 121090283, refer to drawings and LPC application for clarification of scope











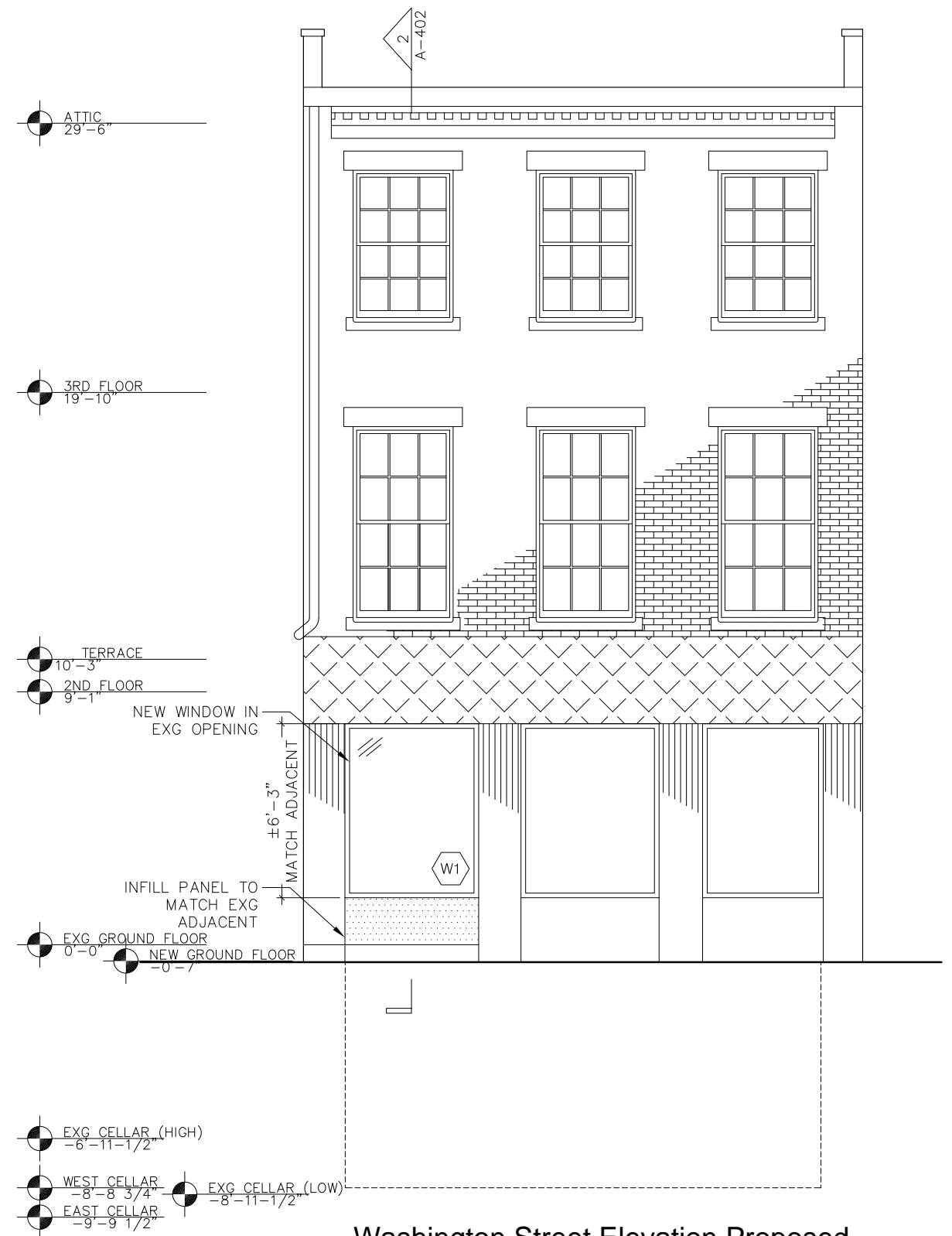
W 12th Street Elevation Existing



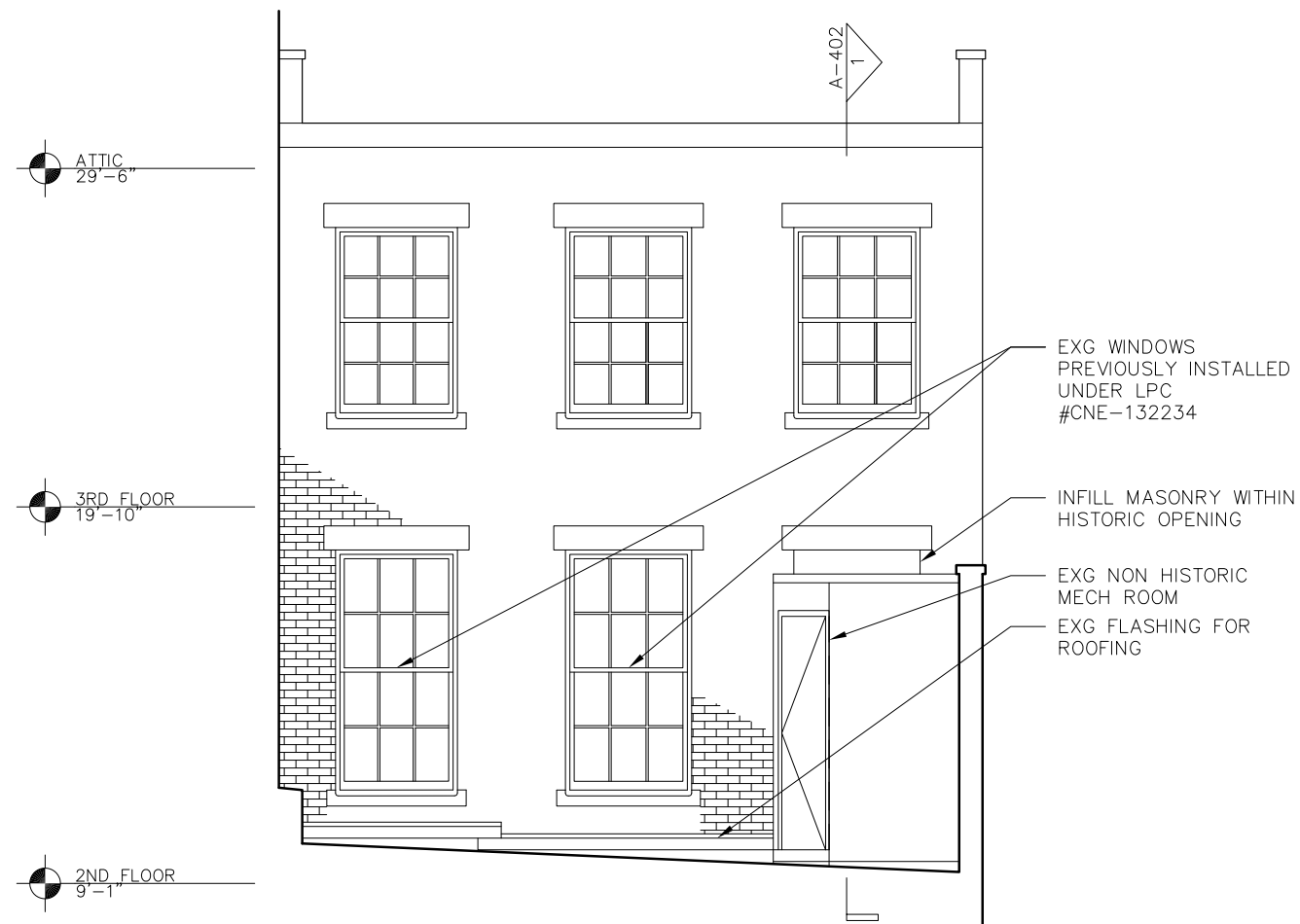
W 12th Street Elevation Proposed



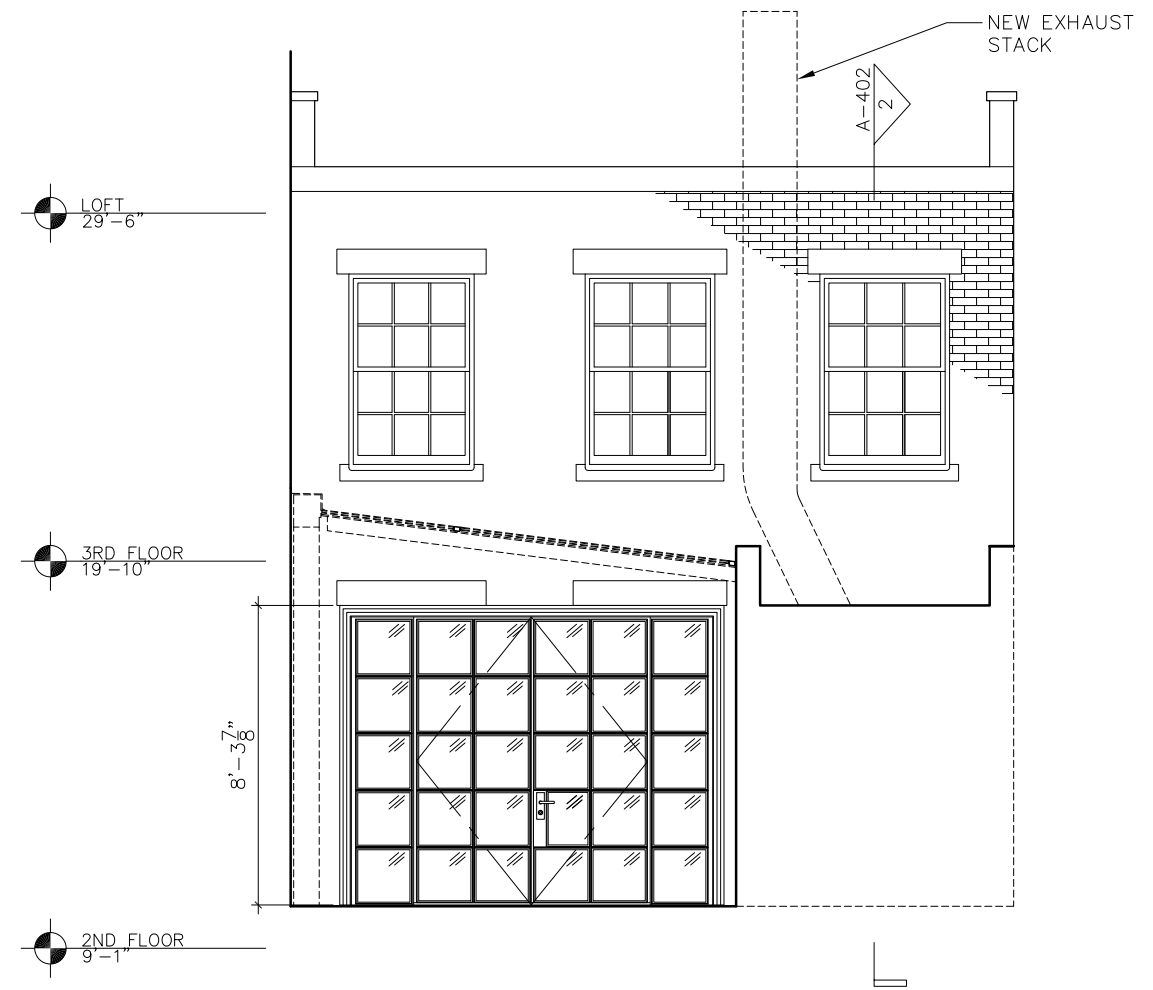
Washington Street Elevation Existing



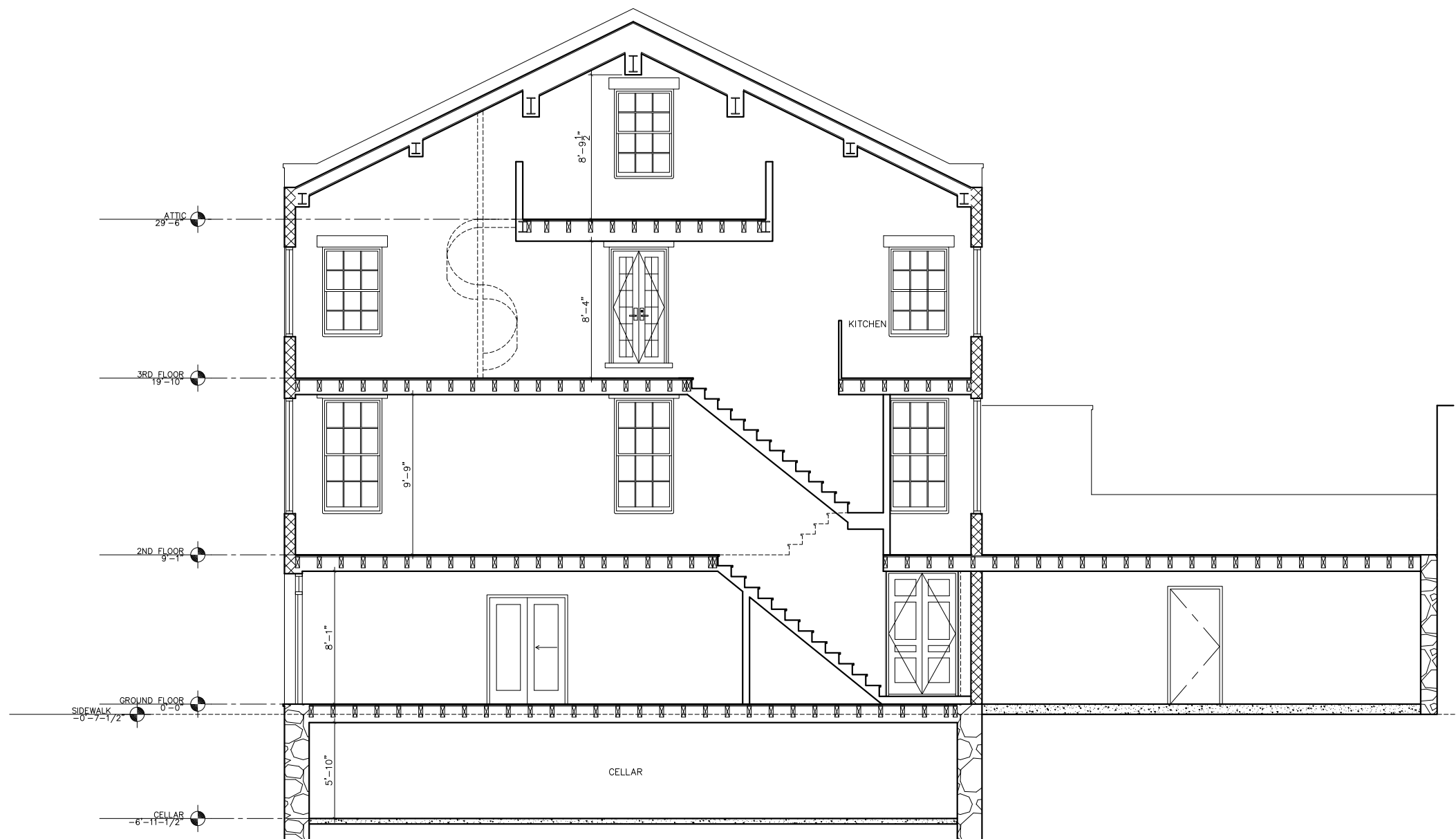
Washington Street Elevation Proposed



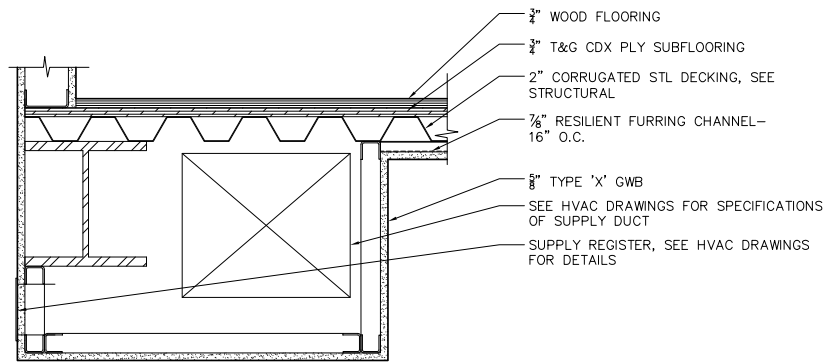
Building East Elevation Existing



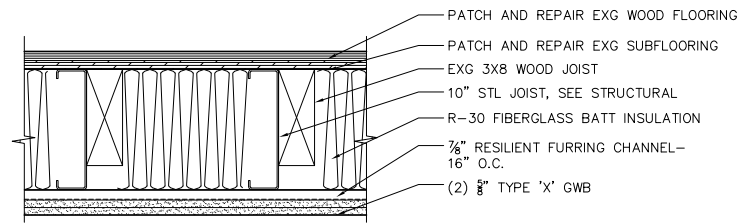
Building East Elevation Proposed



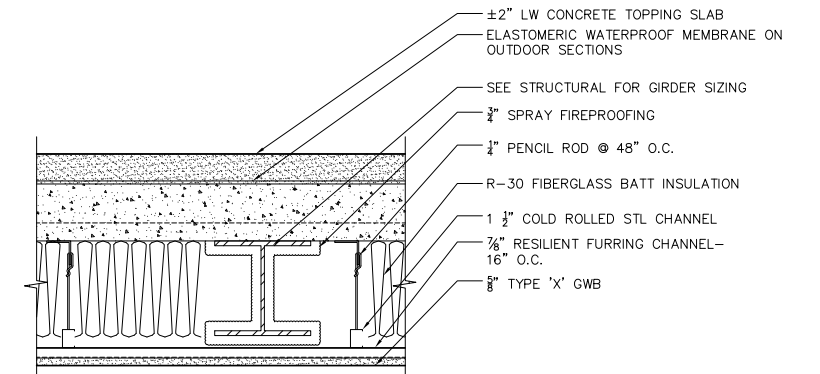
Building Section Existing



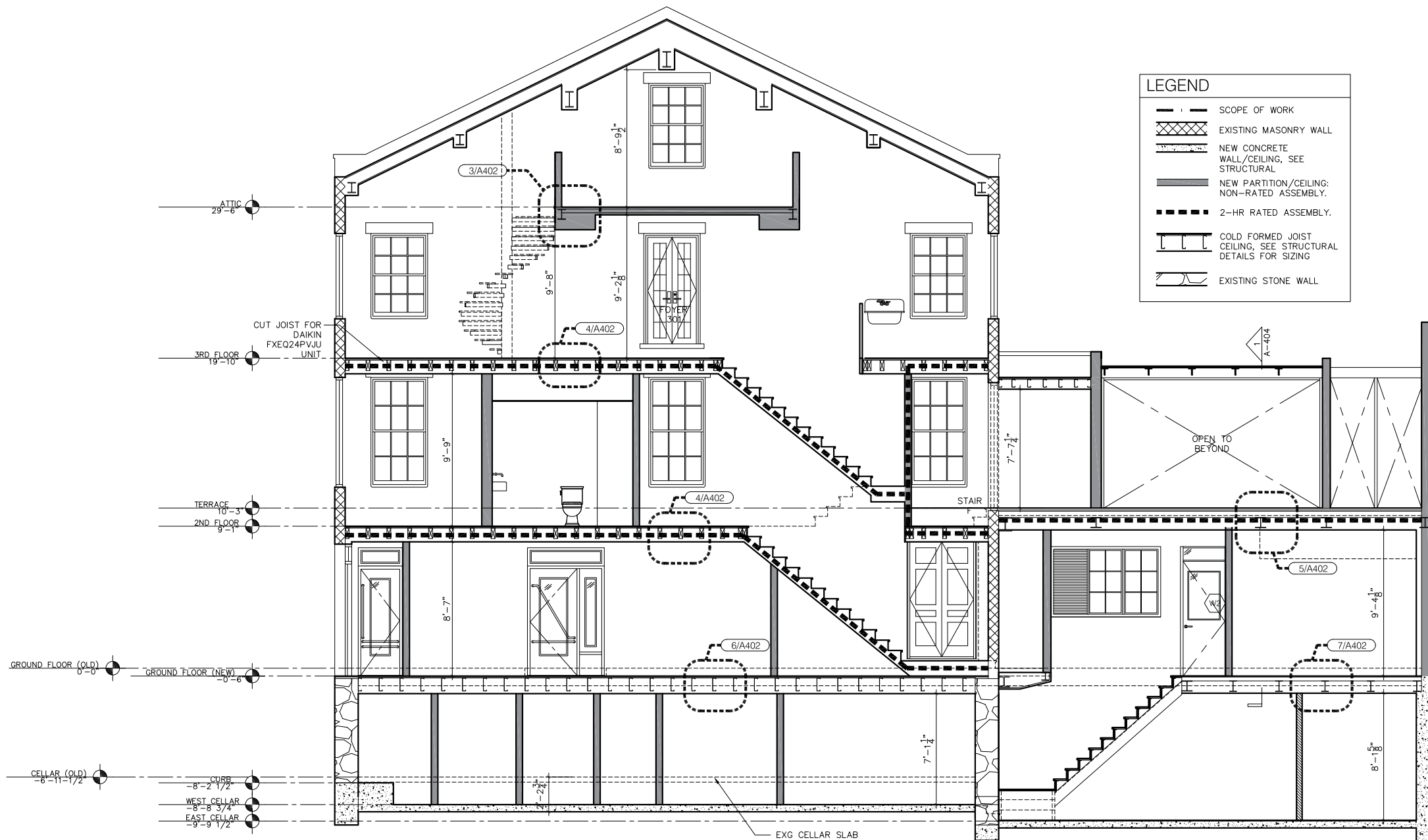
Floor Section at Attic (Not Rated)



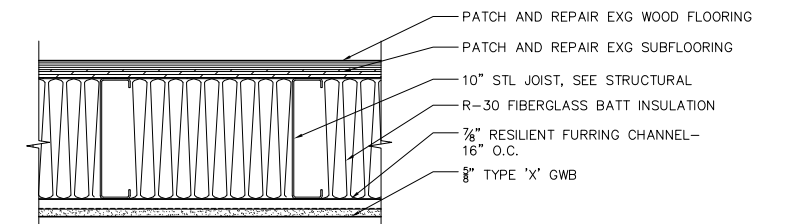
Floor Section at Second & Third Floor (UL 511)



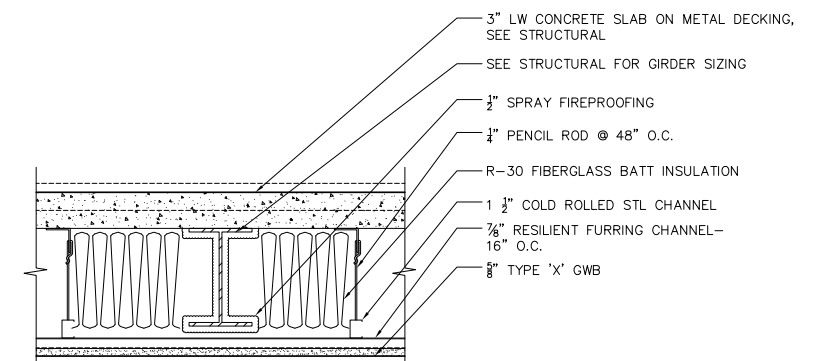
Floor Section at Enclosed Patio (UL 501)



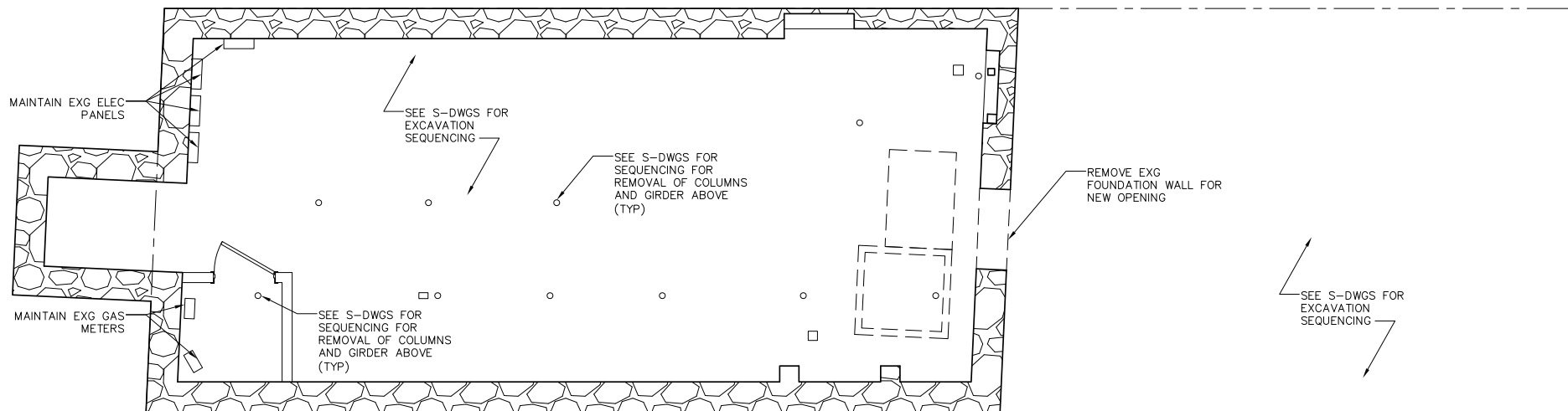
Building Section Proposed



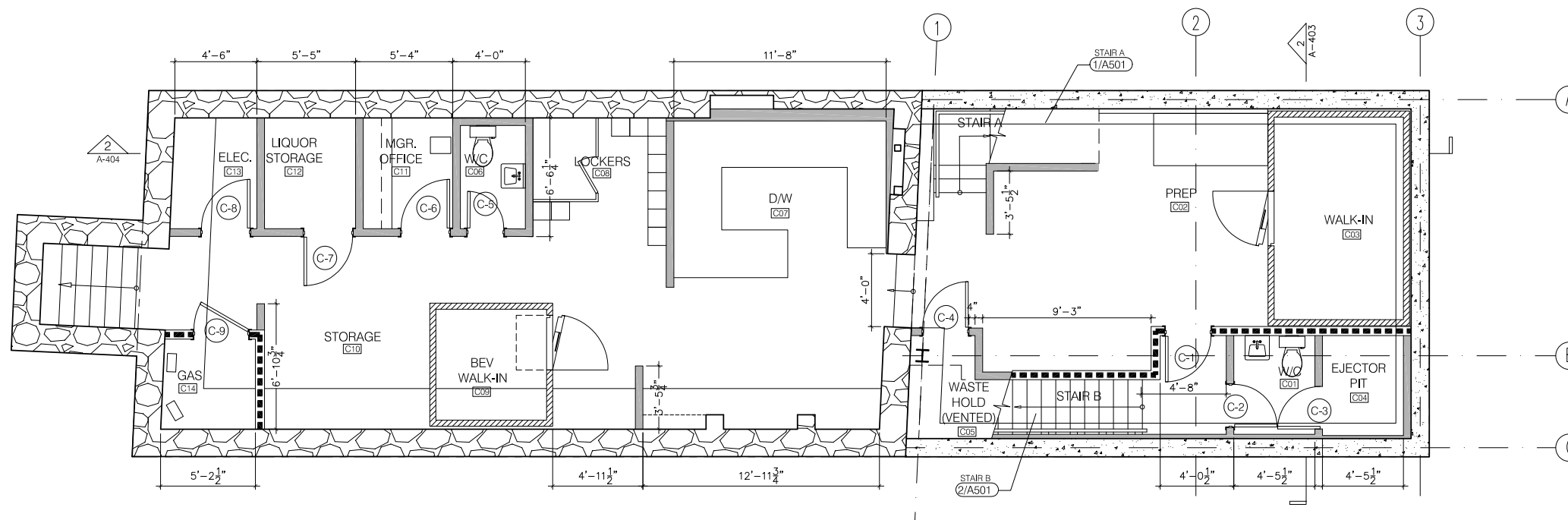
Floor Section at Ground Floor (UL 515)



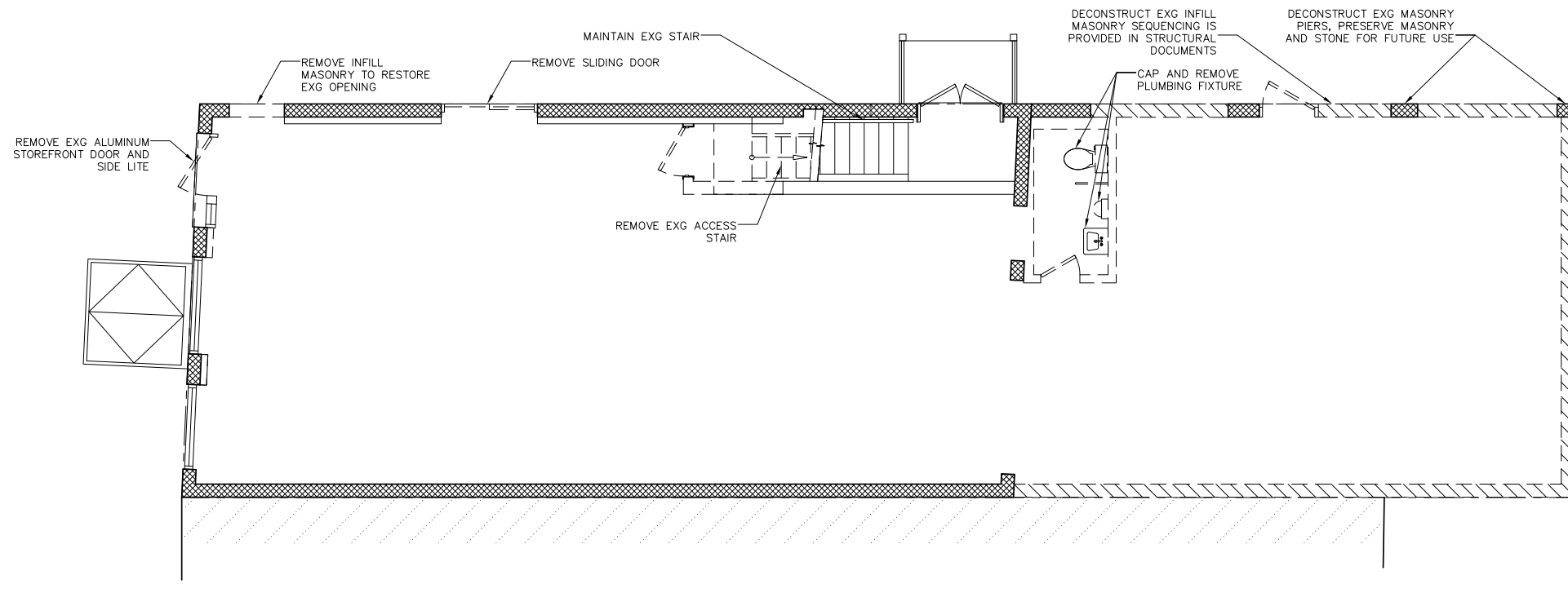
Floor Section at Ground Floor (UL 501)



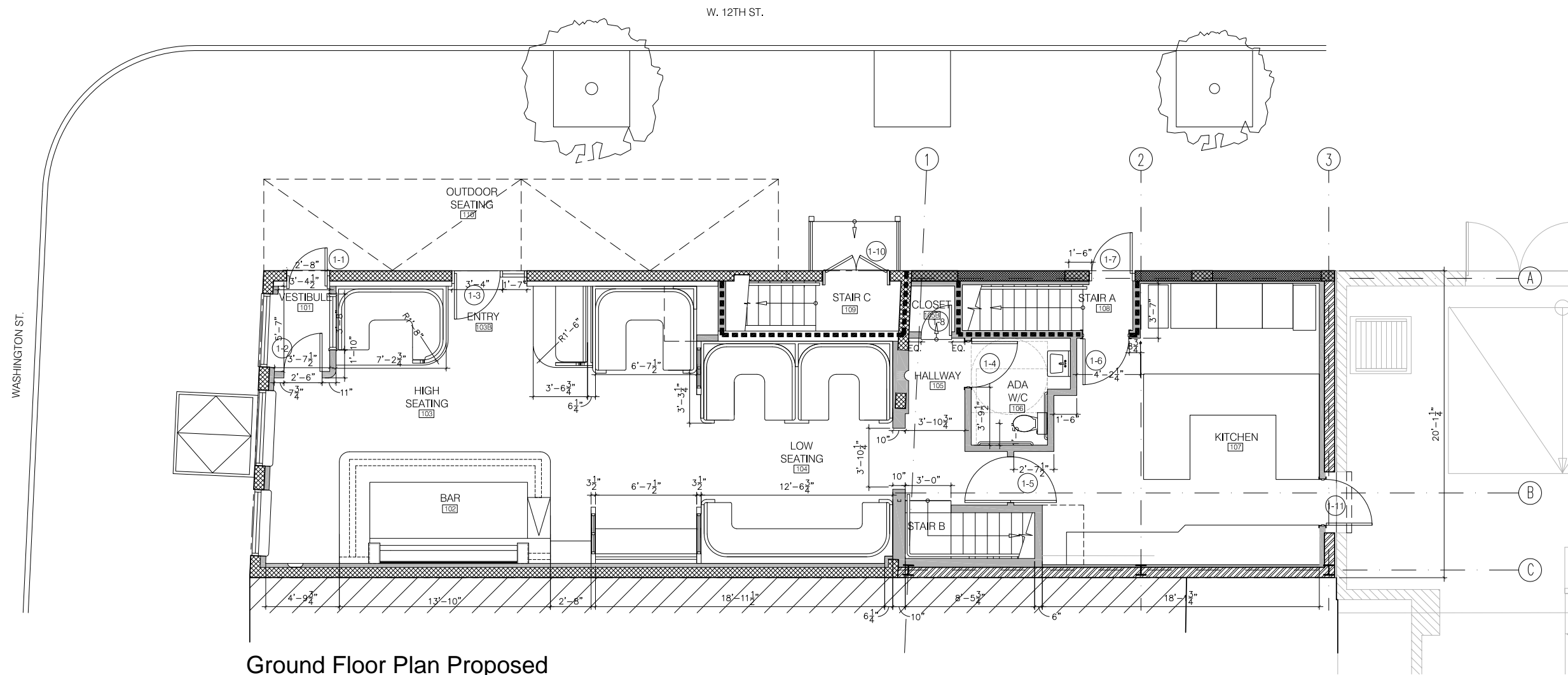
Cellar Floor Plan Existing



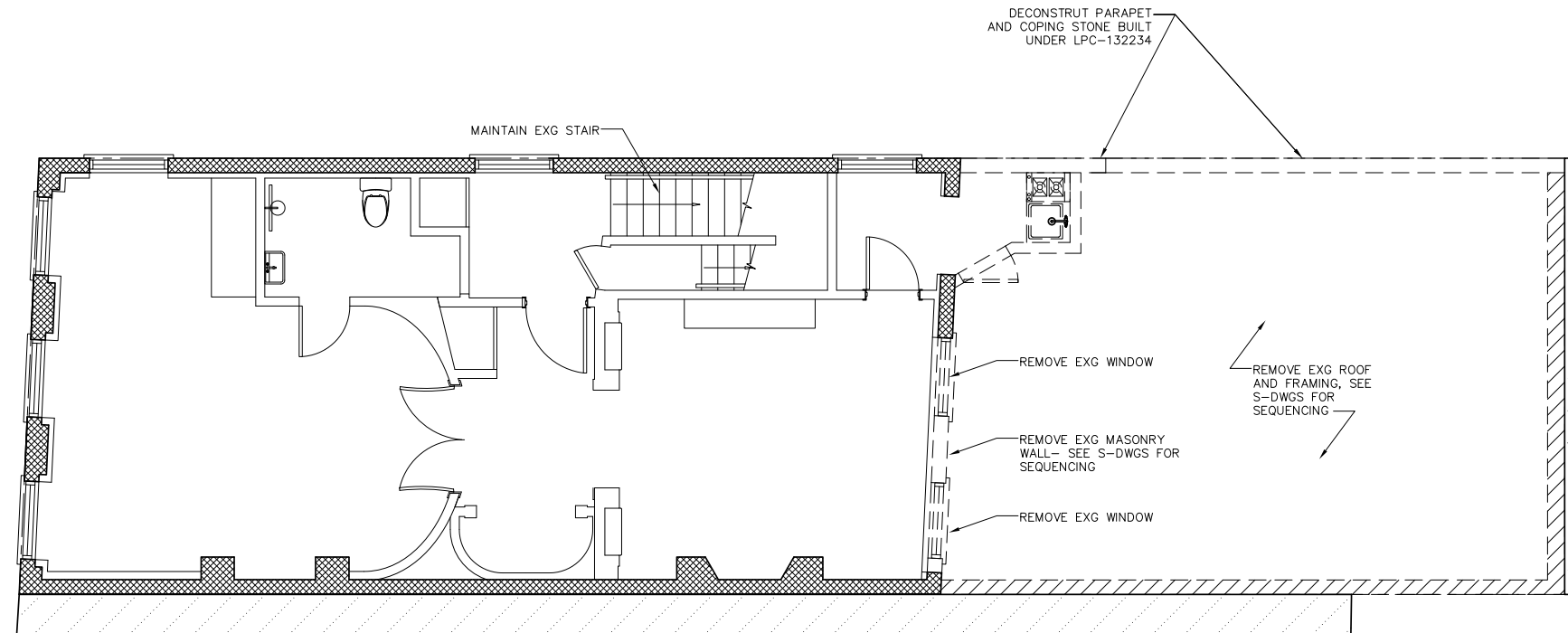
Cellar Floor Plan Proposed



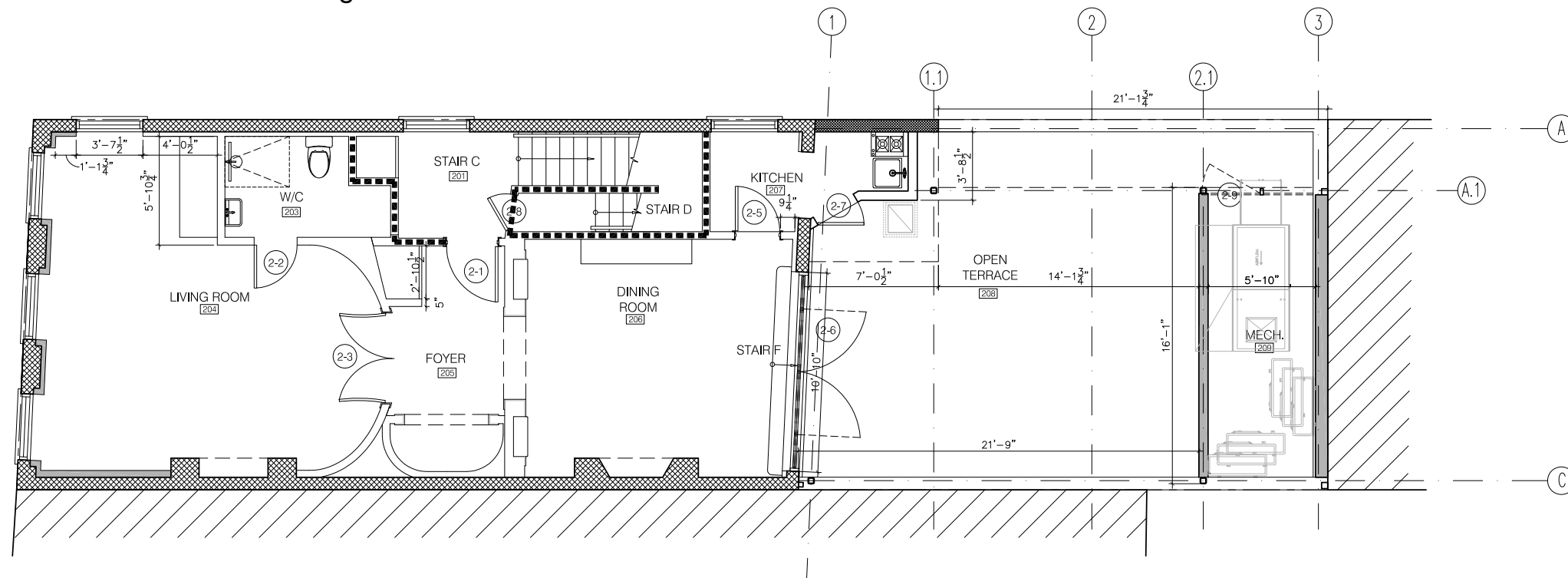
Ground Floor Plan Existing



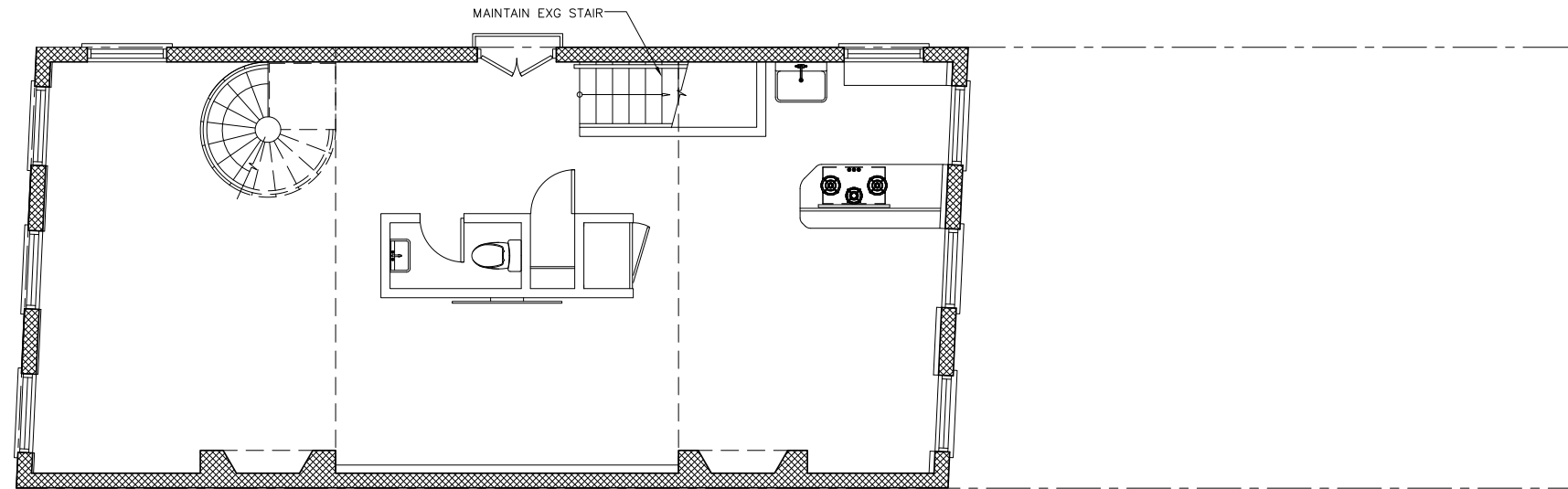
Ground Floor Plan Proposed



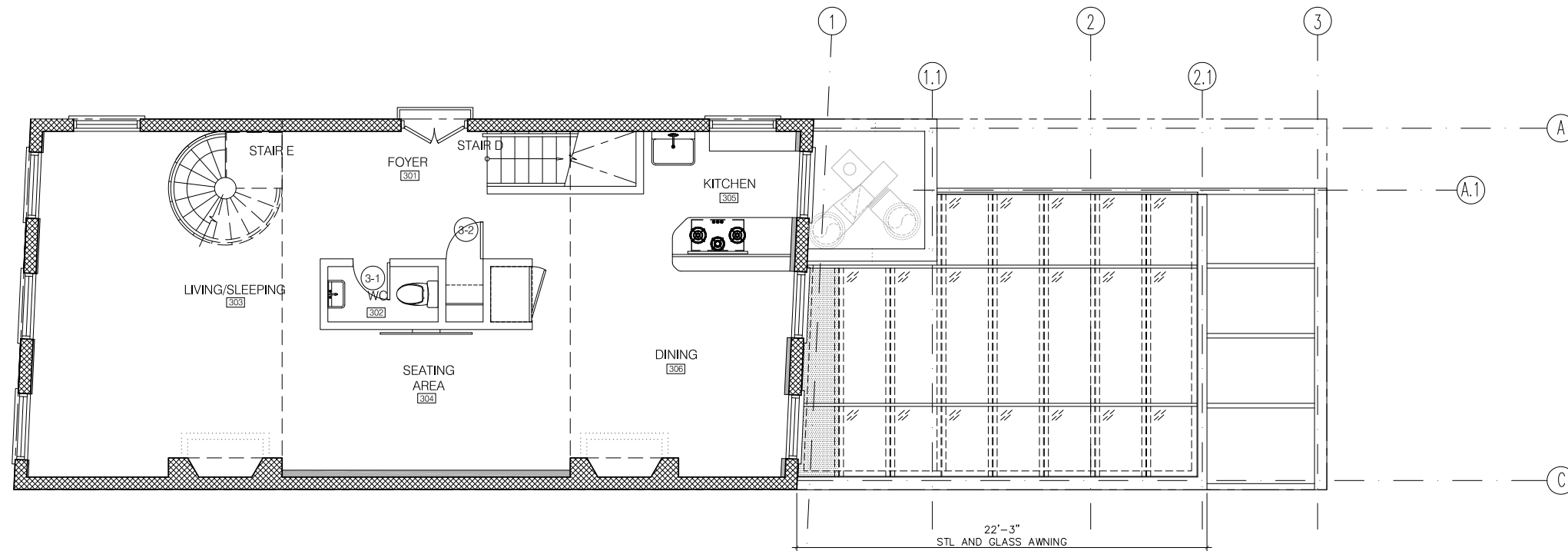
Second Floor Plan Existing



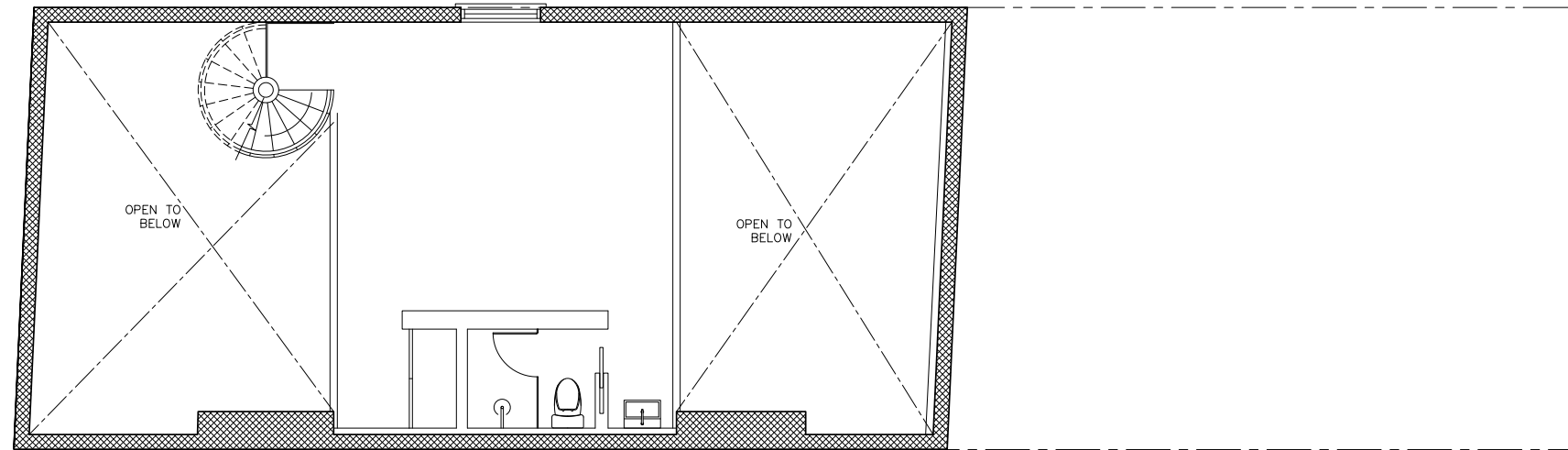
Second Floor Plan Proposed



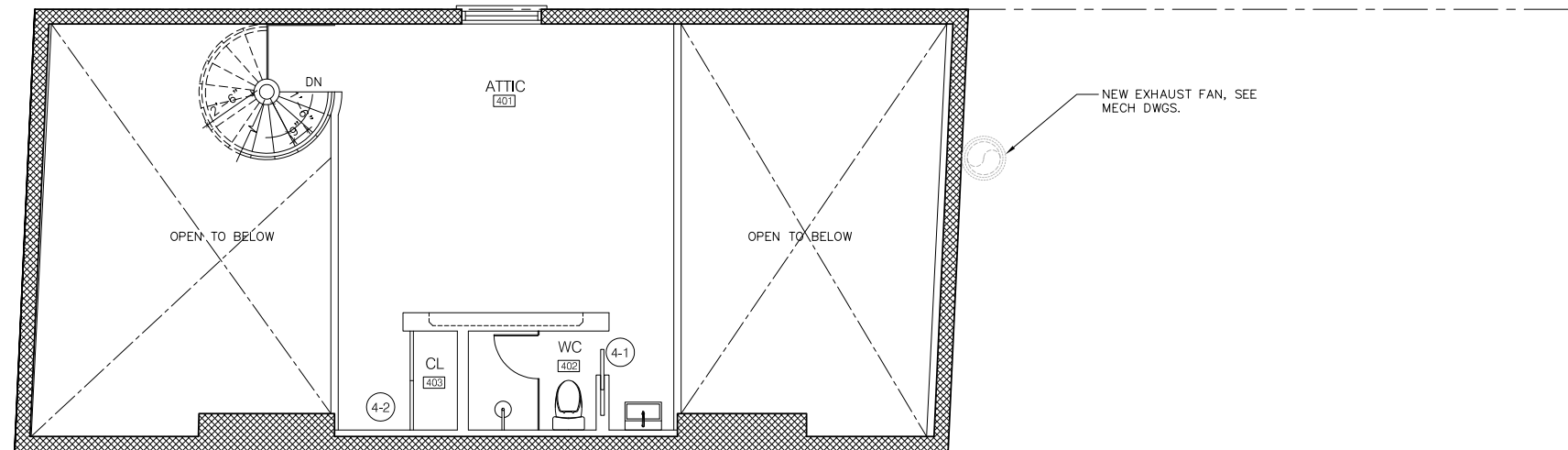
Third Floor Plan Existing



Third Floor Plan Proposed



Attic Floor Plan Existing

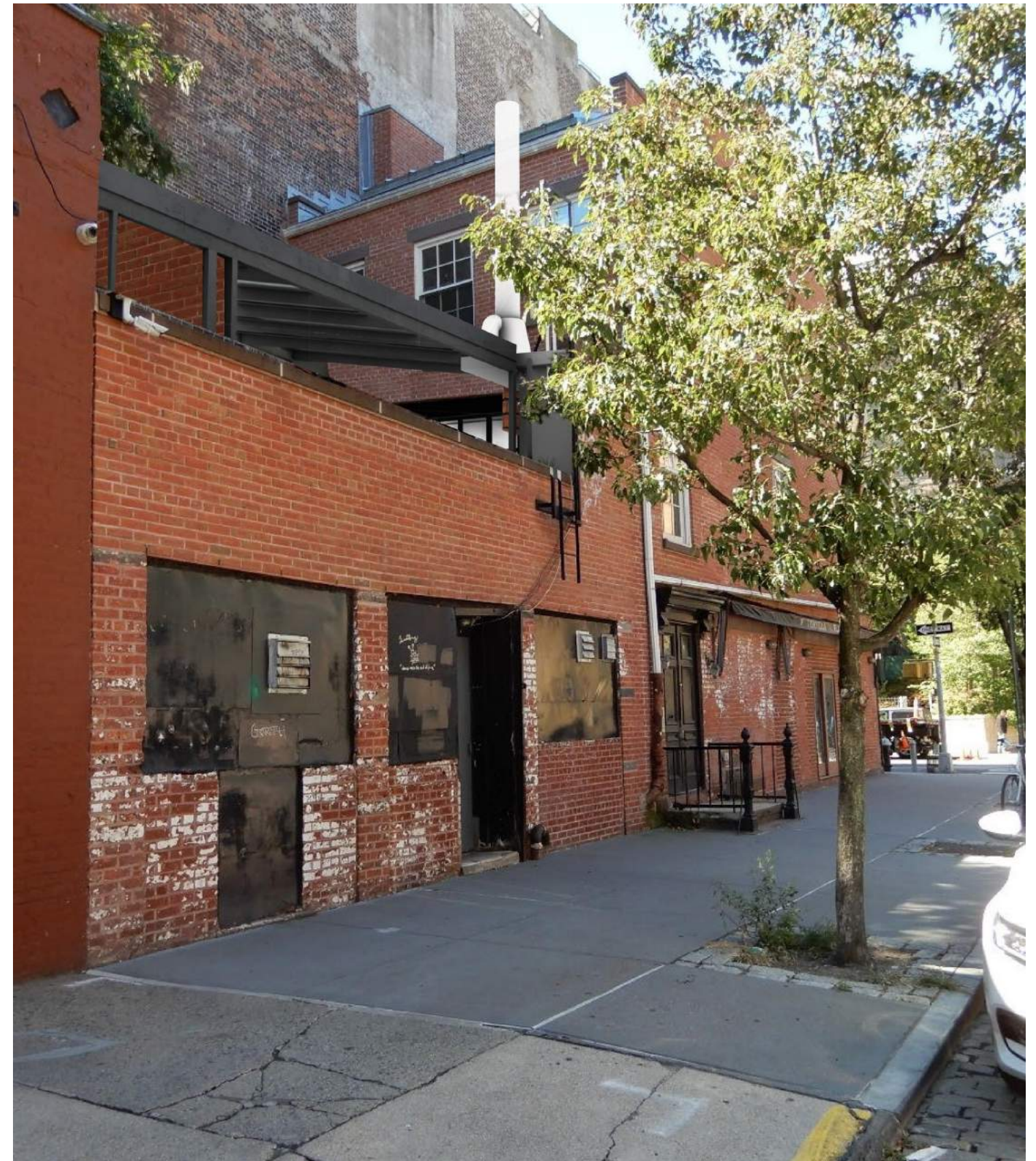


Attic Floor Plan Proposed



Key Plan

Mock-Up



View from W 12th Street South Side

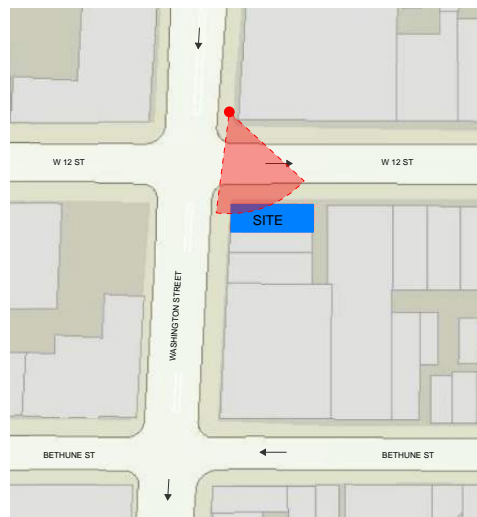


Key Plan

Mock-Up

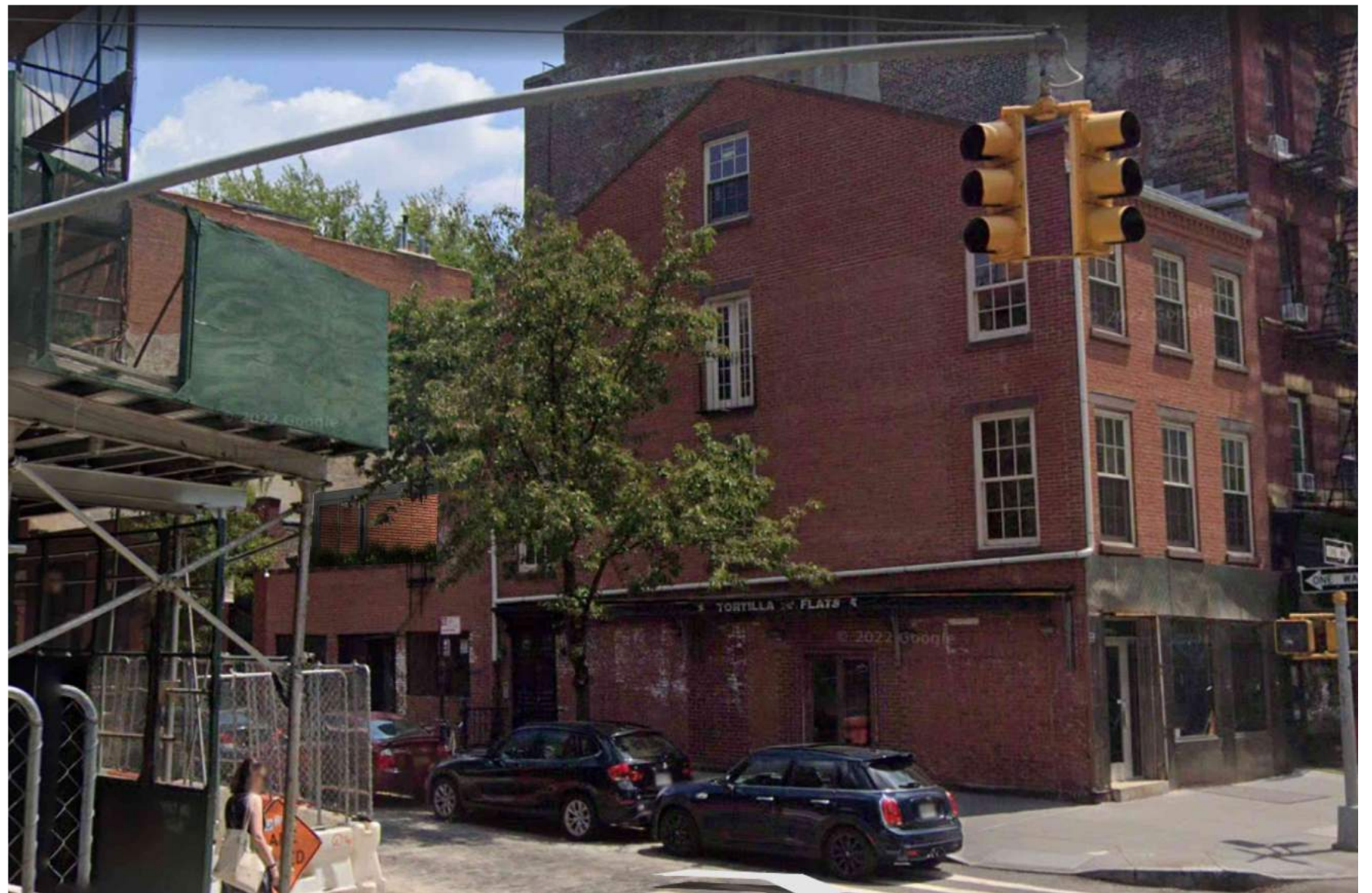


View from W 12th Street North Side



Key Plan

Mock-Up



View from North East Corner of Washington Street and W 12th Street

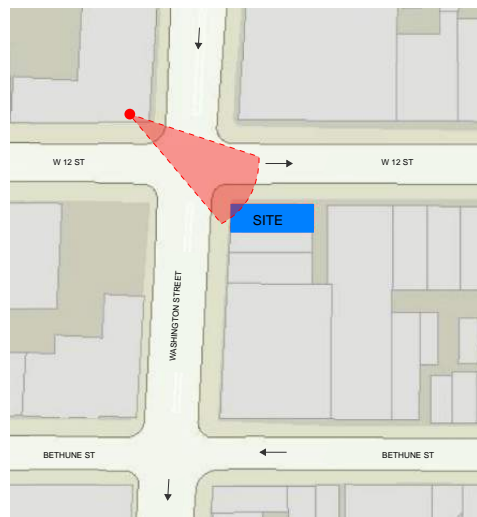


Key Plan

Mock-Up



View from Washington Street North West Side



Key Plan

Mock-Up



View from North West Corner of Washington Street and W 12th Street