

Aritzia

560 Broadway

Aritzia

Acheson Doyle Partners - Preservation Consultant

Block: 497

Lot: 18

Landmarks Preservation Community Board Meeting
October 9, 2023

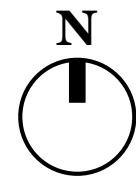
Aritzia

560 Broadway

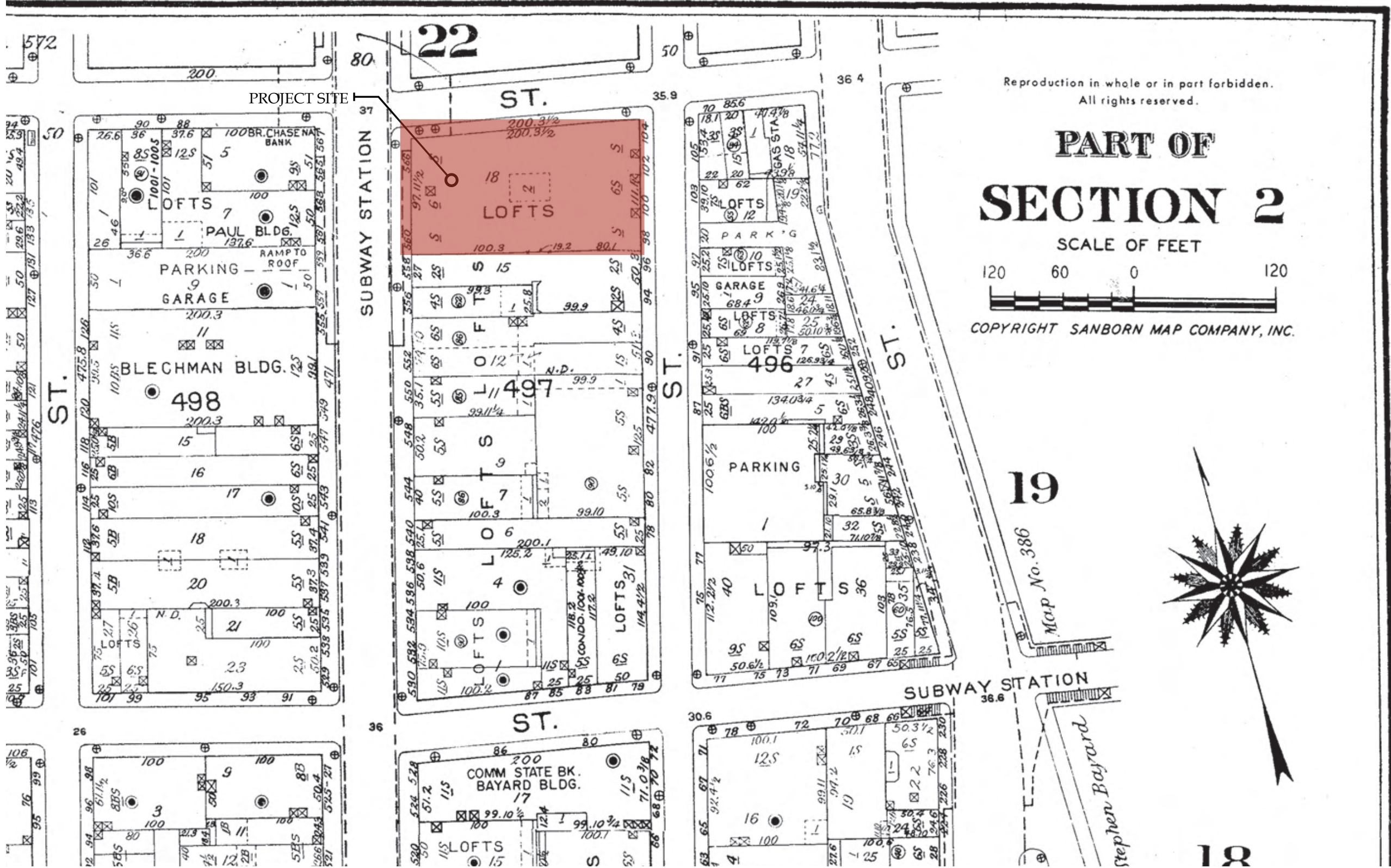
- 1. History of the Site**
- 2. Existing Building**
- 3. Proposed Exterior Design**
- 4. Proposed Development of Exterior Facade**



PROJECT SITE



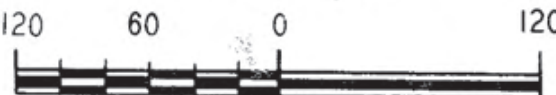
Site Location



Reproduction in whole or in part forbidden.
All rights reserved.

PART OF SECTION 2

SCALE OF FEET



COPYRIGHT SANBORN MAP COMPANY, INC.





1940 - 560 Broadway



560 Broadway



1980 - 560 Broadway



View From Existing Prince Street - 560 Broadway



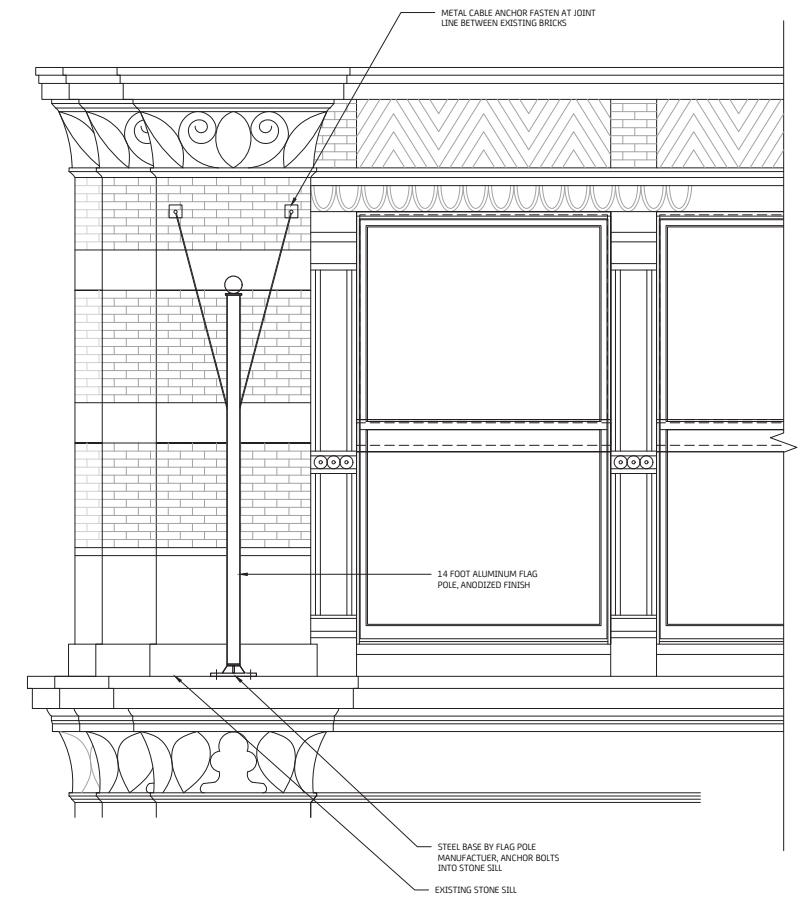
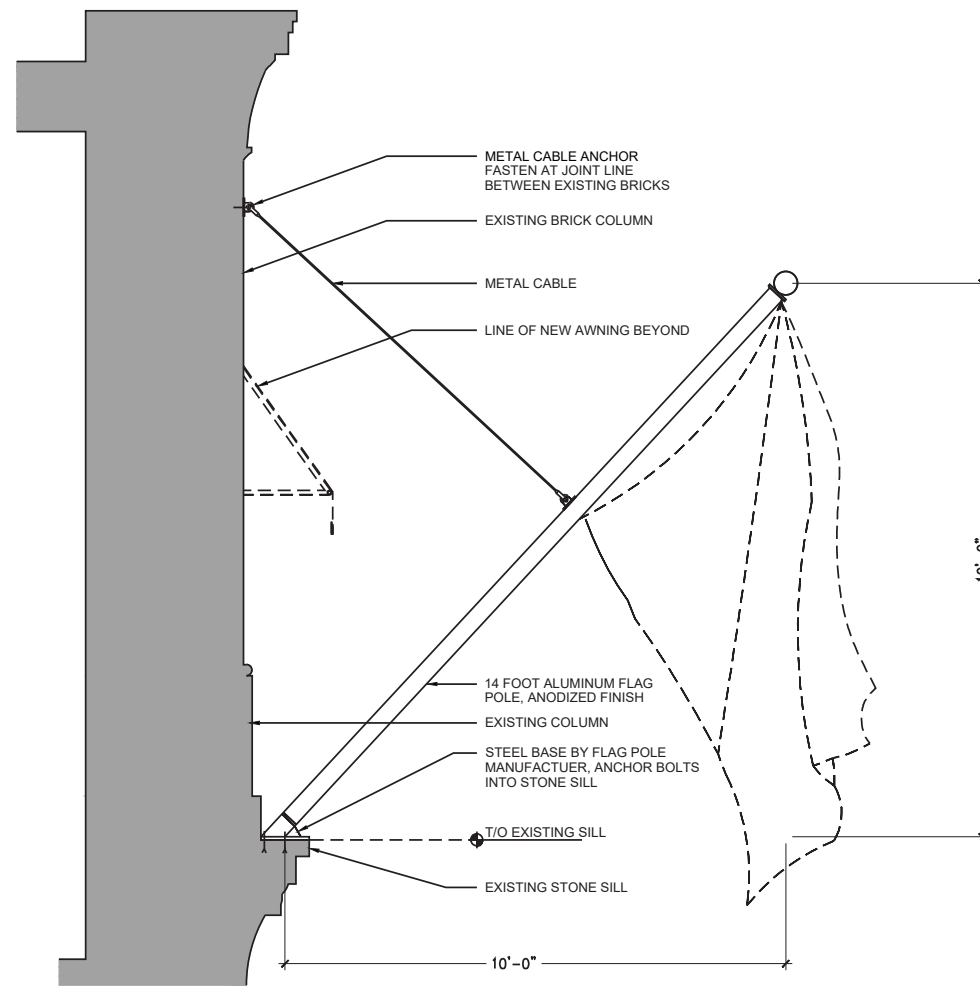
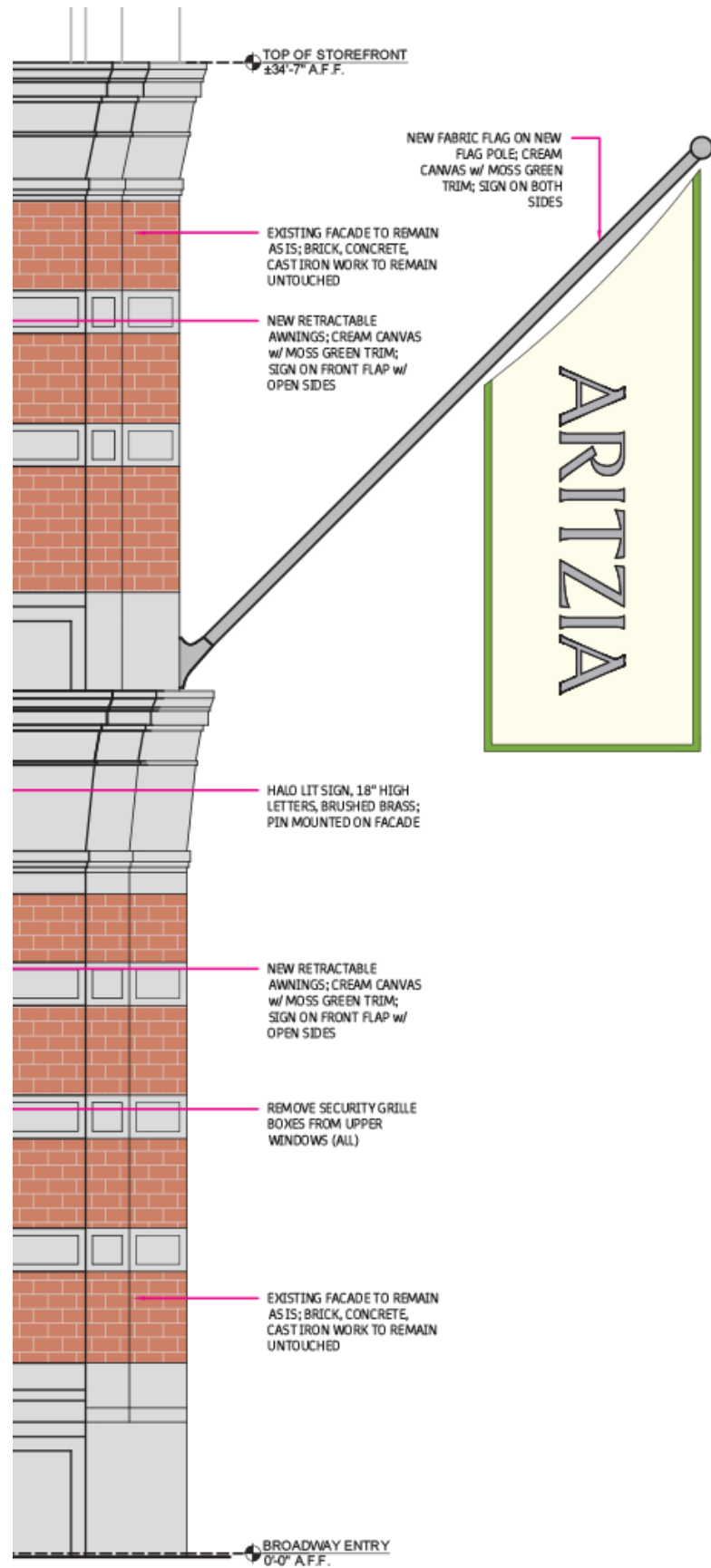
560 Broadway

560 Broadway

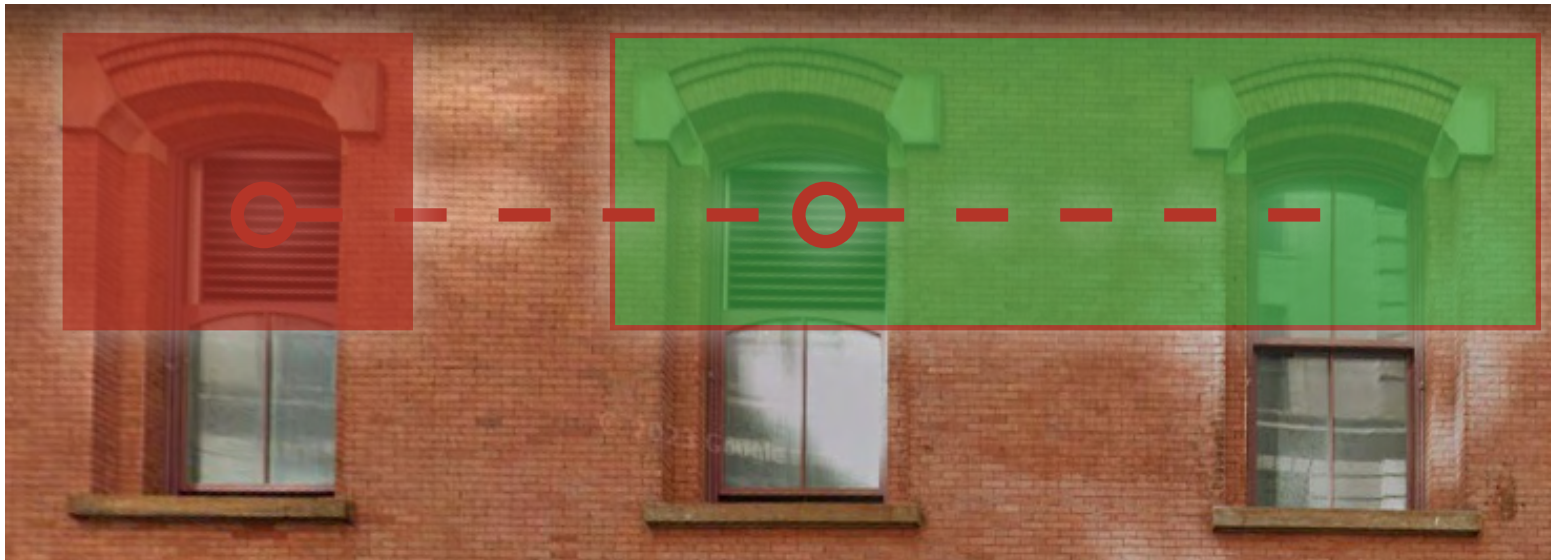
Converse Store with existing flag



Existing - 560 Broadway



Proposed Exterior Flag



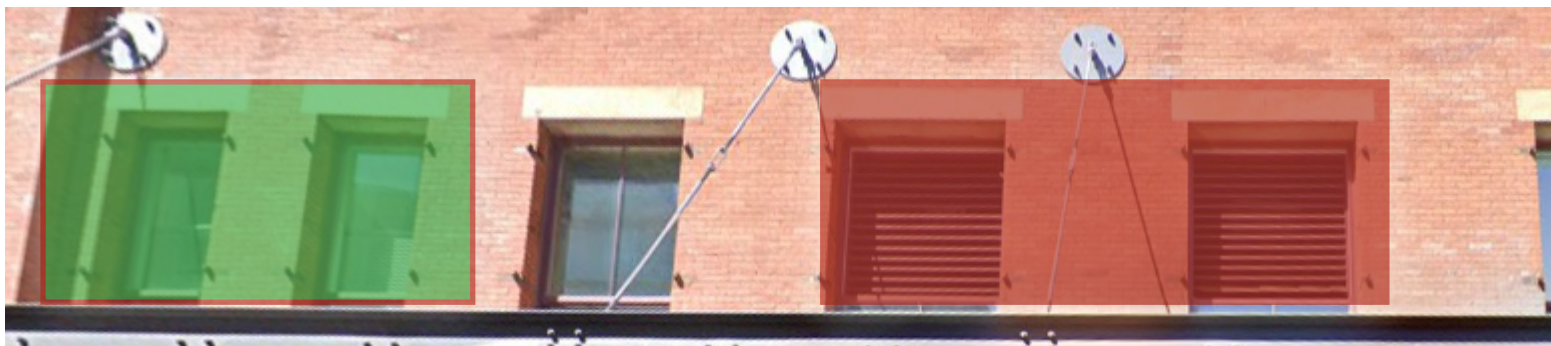
South Facing Facade

Window Louvers to move west by one window



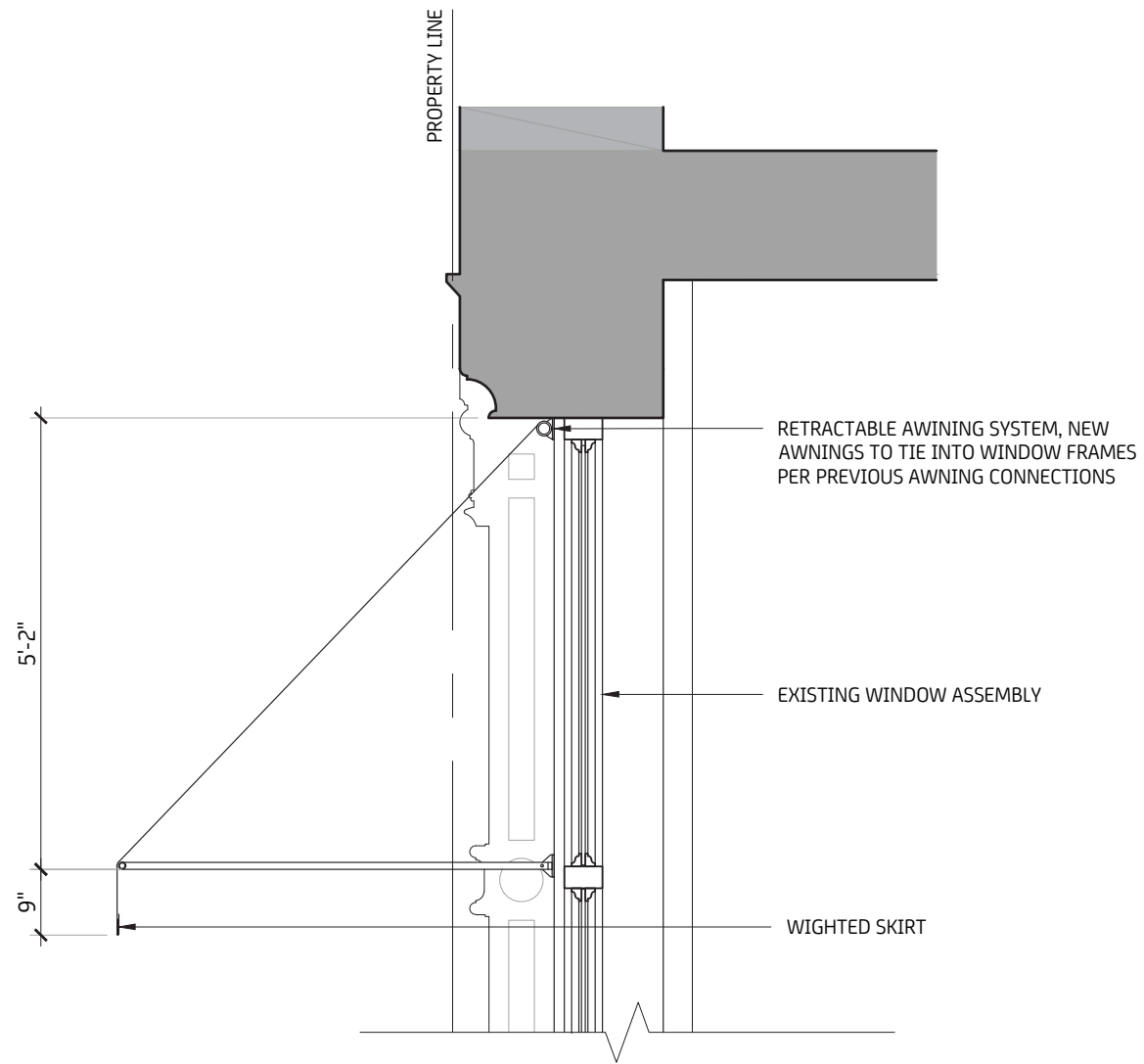
East Facing Facade

Louvers to be added to windows in exterior cafe and removed from existing spaces

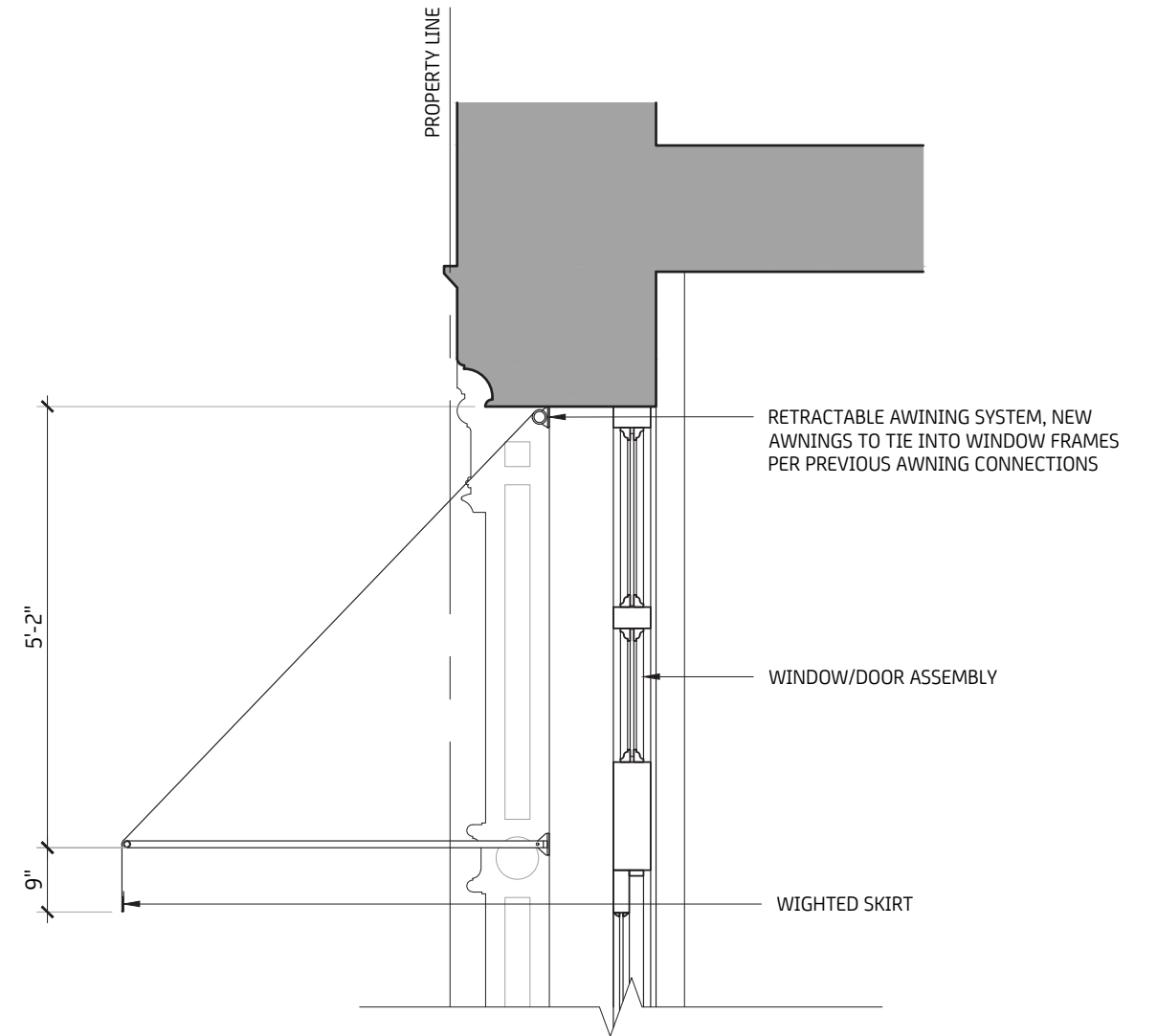


West Facing Facade

Louvers to be removed and from existing window and added to new windows highlighted in green

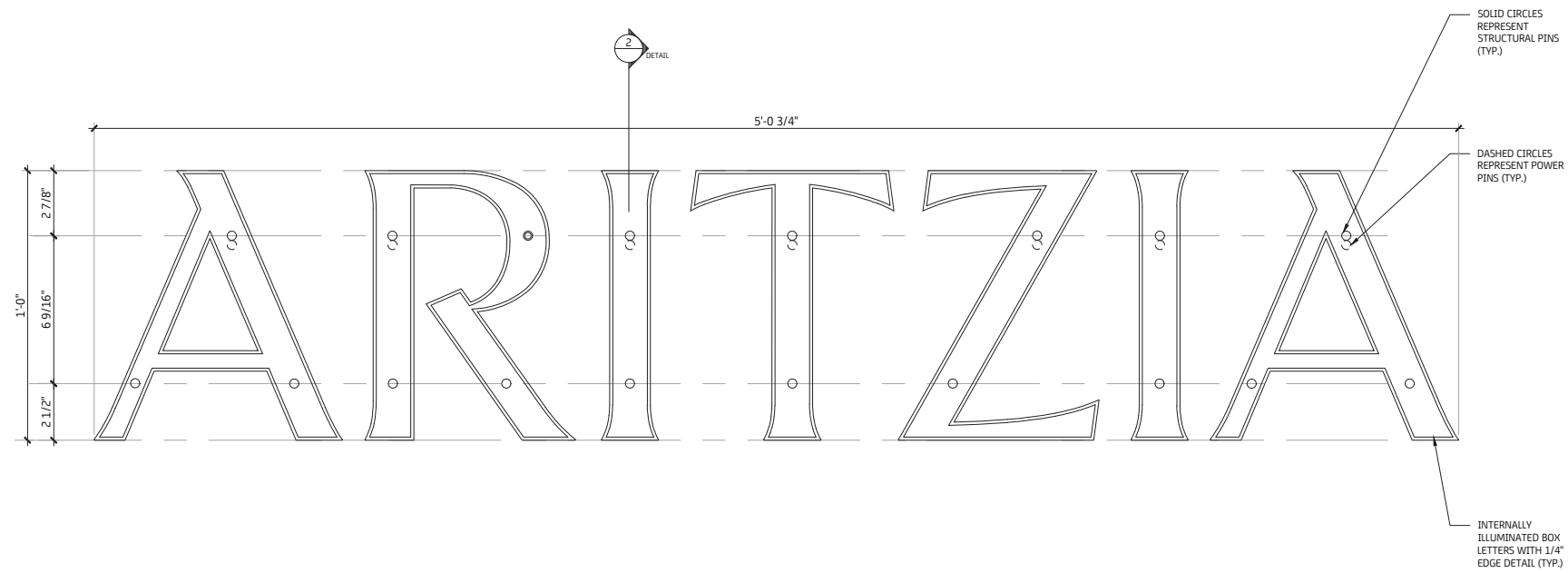


Section Detail Window Awning

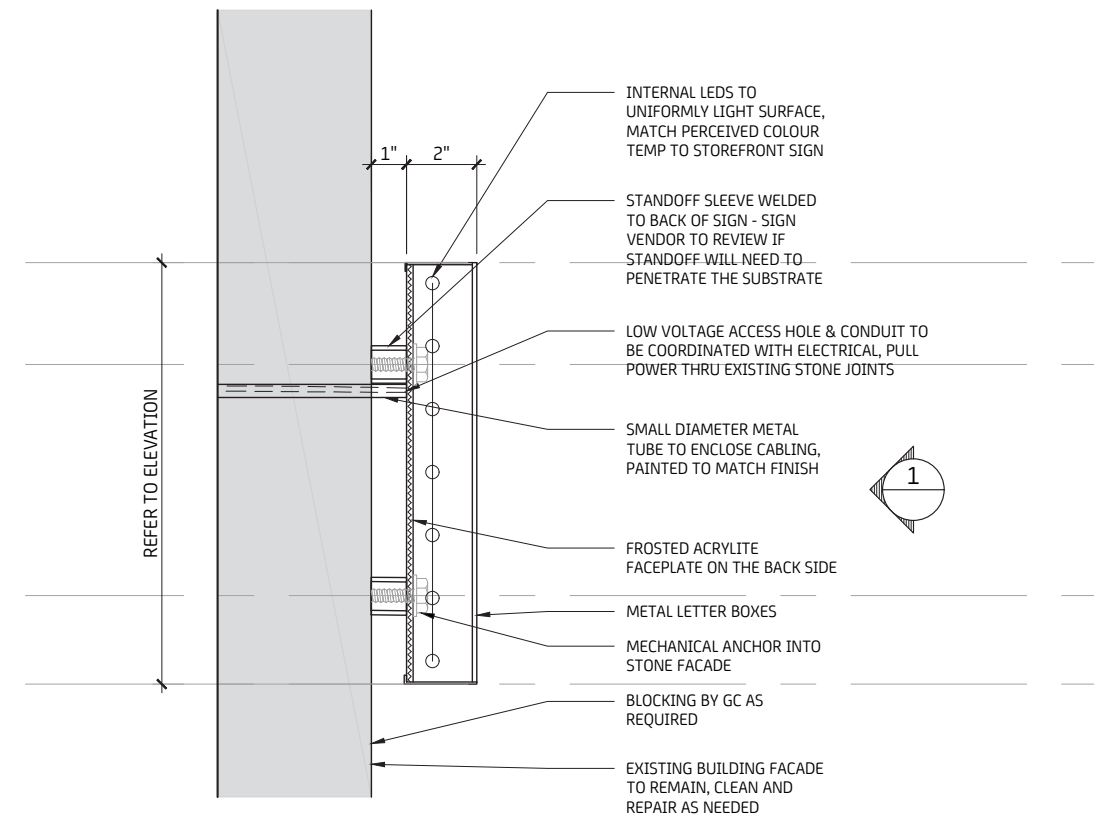


Section Detail Storefront Awning

Proposed Awning



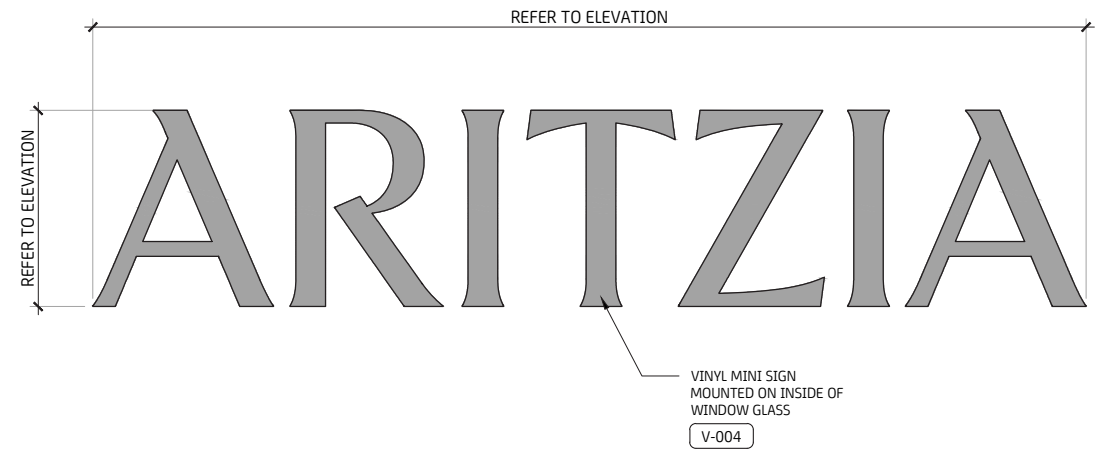
Elevation - Pin Mounted Halo Lit Sign



Section Detail - Pin Mounted Halo Lit Sign

Proposed Sign Detail

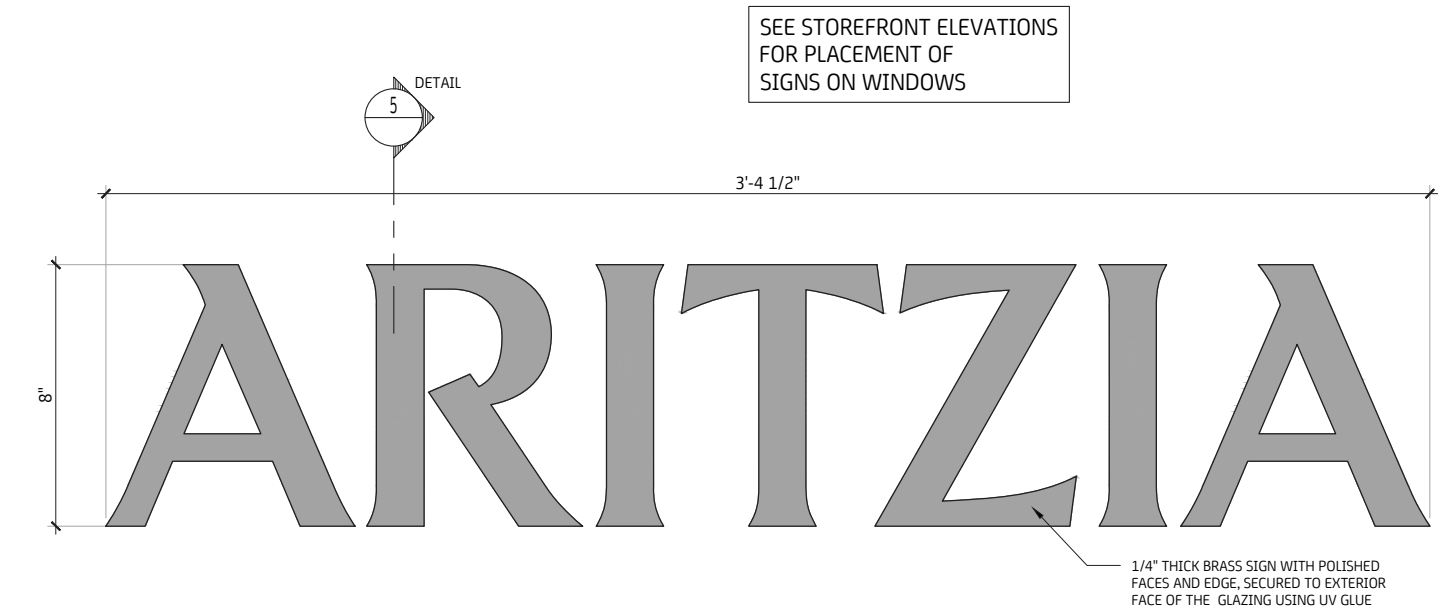
ONLY LOCATED ON PRINCE STREET SIDE OF BUILDING
- REFER TO ELEVATION FOR LOCATIONS



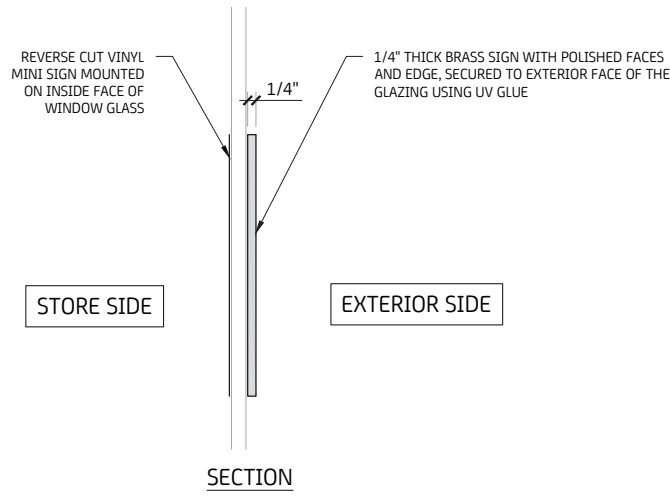
Storefront Vinyl Signage



Mini Storefront Window Signs



Elevation - Storefront Mini Window Signs



Section - Storefront Mini Window Signs

Proposed Sign Detail



Proposed Exterior Awnings



Existing Exterior



Proposed Exterior

Existing & Proposed Exterior



2 ELEVATION - STOREFRONT (CROSBY STREET SIDE)
Scale: 3/8" = 1'-0"

560 Broadway Rear Proposed Elevations



Existing Exterior



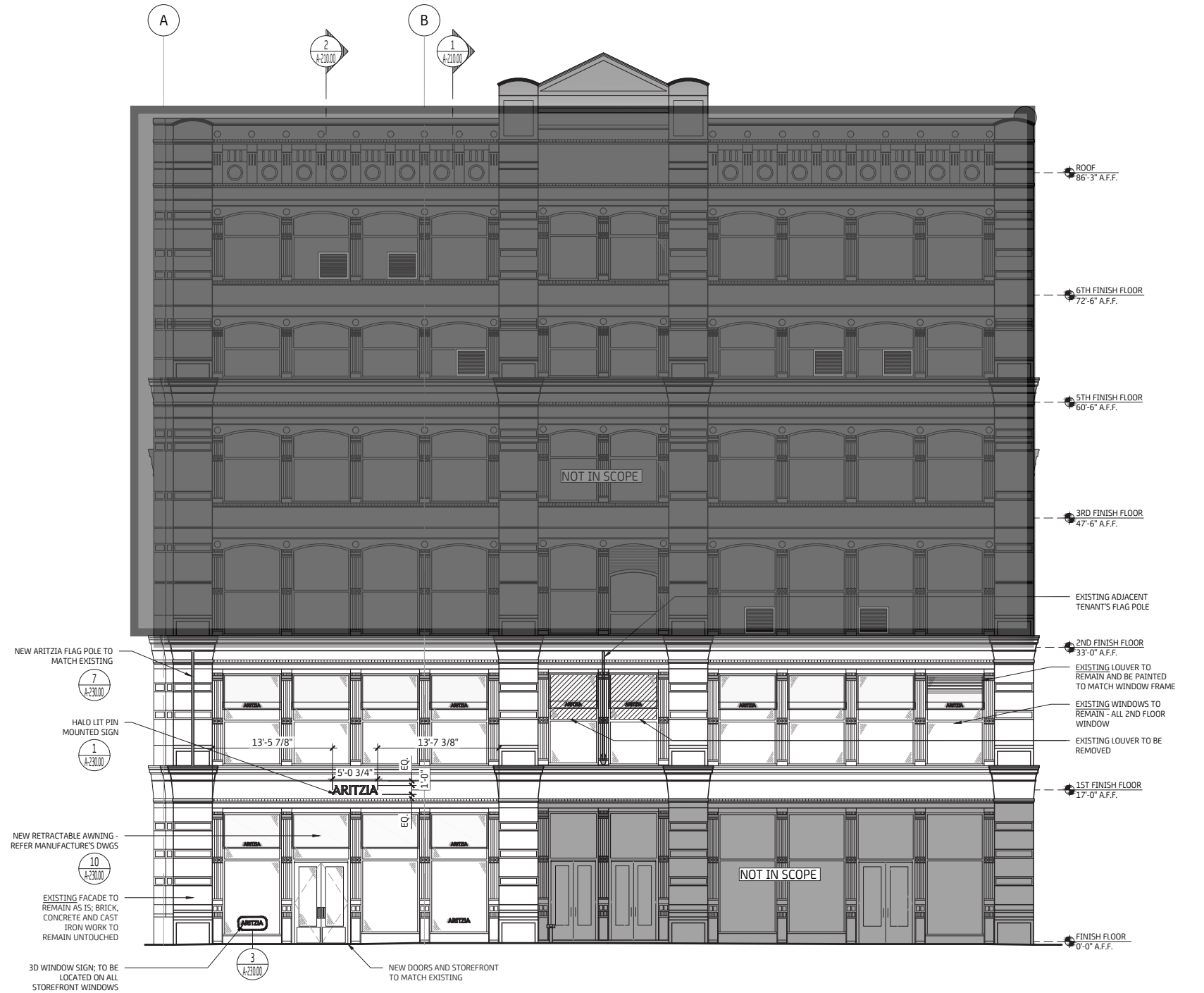
Proposed Exterior

Existing & Proposed Building South Facing Elevation

Existing Exterior



Proposed Exterior



1 ELEVATION - STOREFRONT (BROADWAY SIDE)
Scale: 1/8" = 1'-0"

Existing & Proposed Building East Facing Elevation

Existing Exterior



Proposed Exterior



2 ELEVATION - STOREFRONT (CROSBY STREET SIDE)
Scale: 1/8" = 1'-0"

Existing & Proposed Building West Facing Elevation