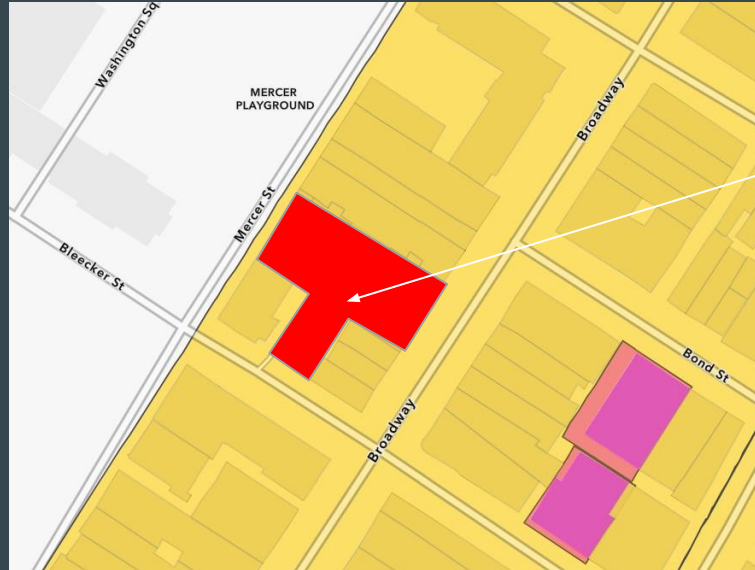


77 BLEECKER ST WINDOW REPLACEMENT PROJECT

NoHo Historic District



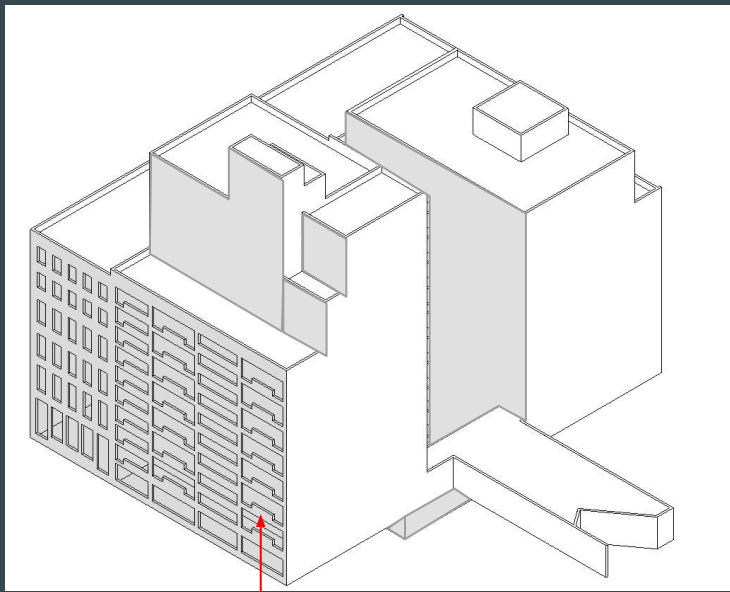
PROJECT LOCATION

MERCER STREET ELEVATION

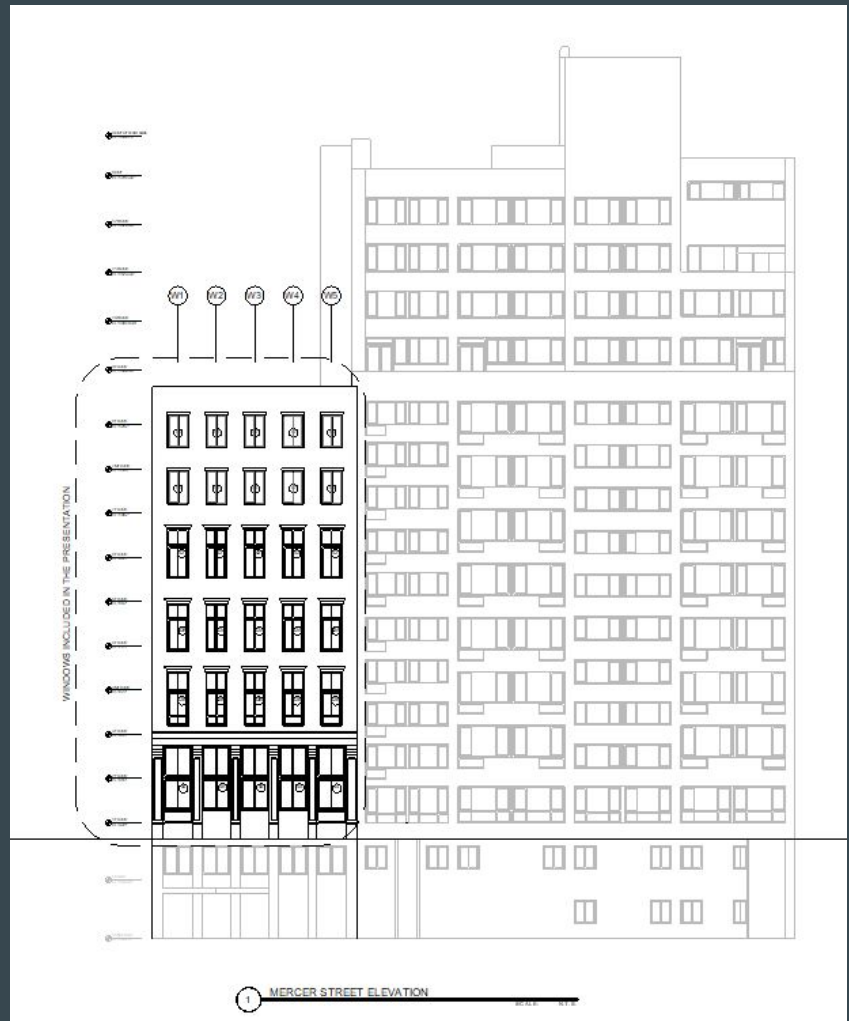


DESIGNATION PHOTO - MERCER ELEVATION





MERCER FACADE

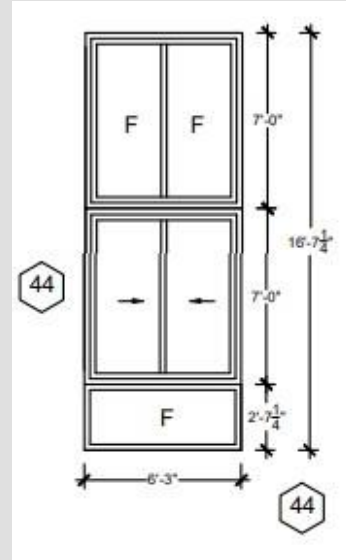


1 MERCER STREET ELEVATION

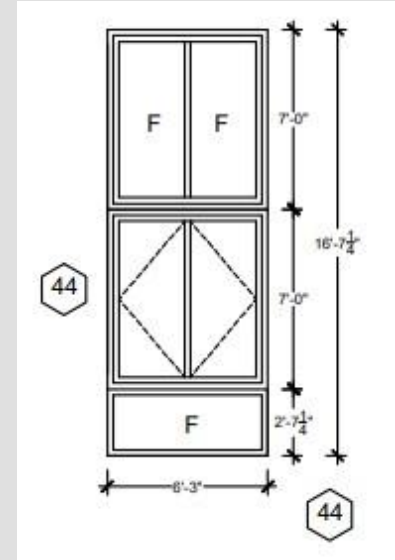
WINDOWS AT MERCER ELEVATION (First Floor)



Window Type 44



Existing

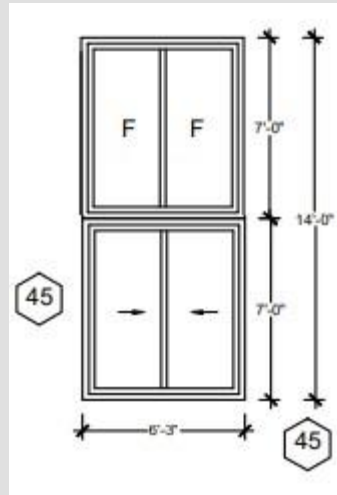


Proposed

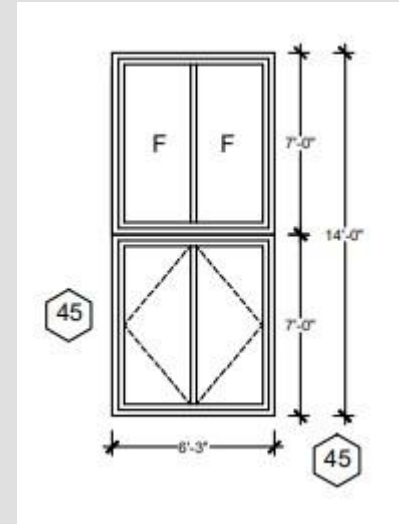
WINDOWS AT MERCER ELEVATION (First Floor)



Window Type 45



Existing

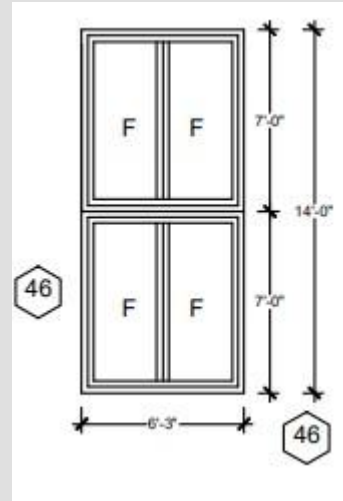


Proposed

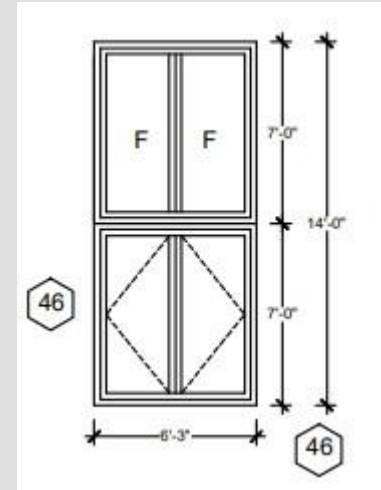
WINDOWS AT MERCER ELEVATION (First Floor)



Window Type 46



Existing

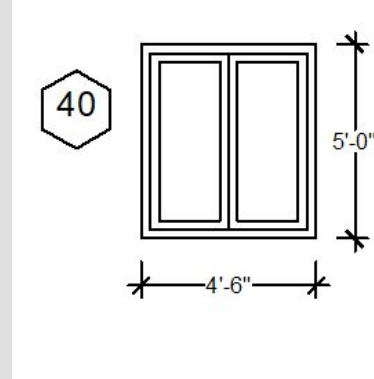


Proposed

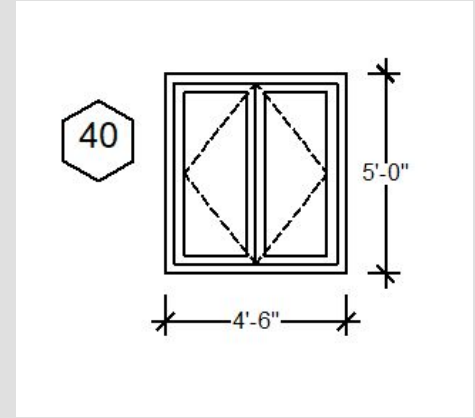
WINDOWS AT MERCER ELEVATION (top floors)



Window Type 40



Existing

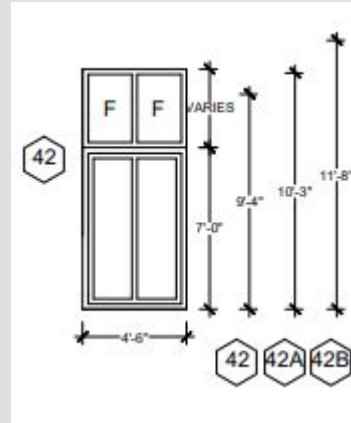


Proposed

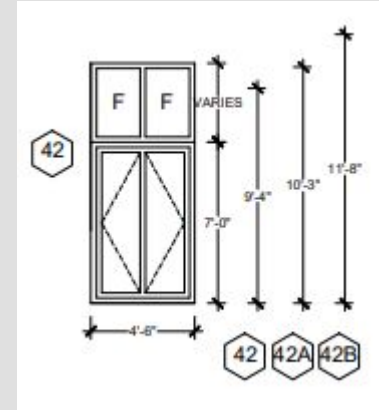
WINDOWS AT MERCER ELEVATION (top floors)



Window Type 42



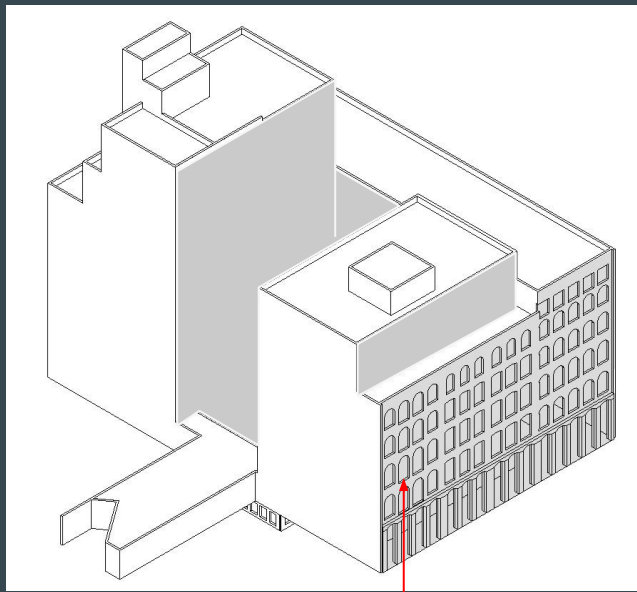
Existing



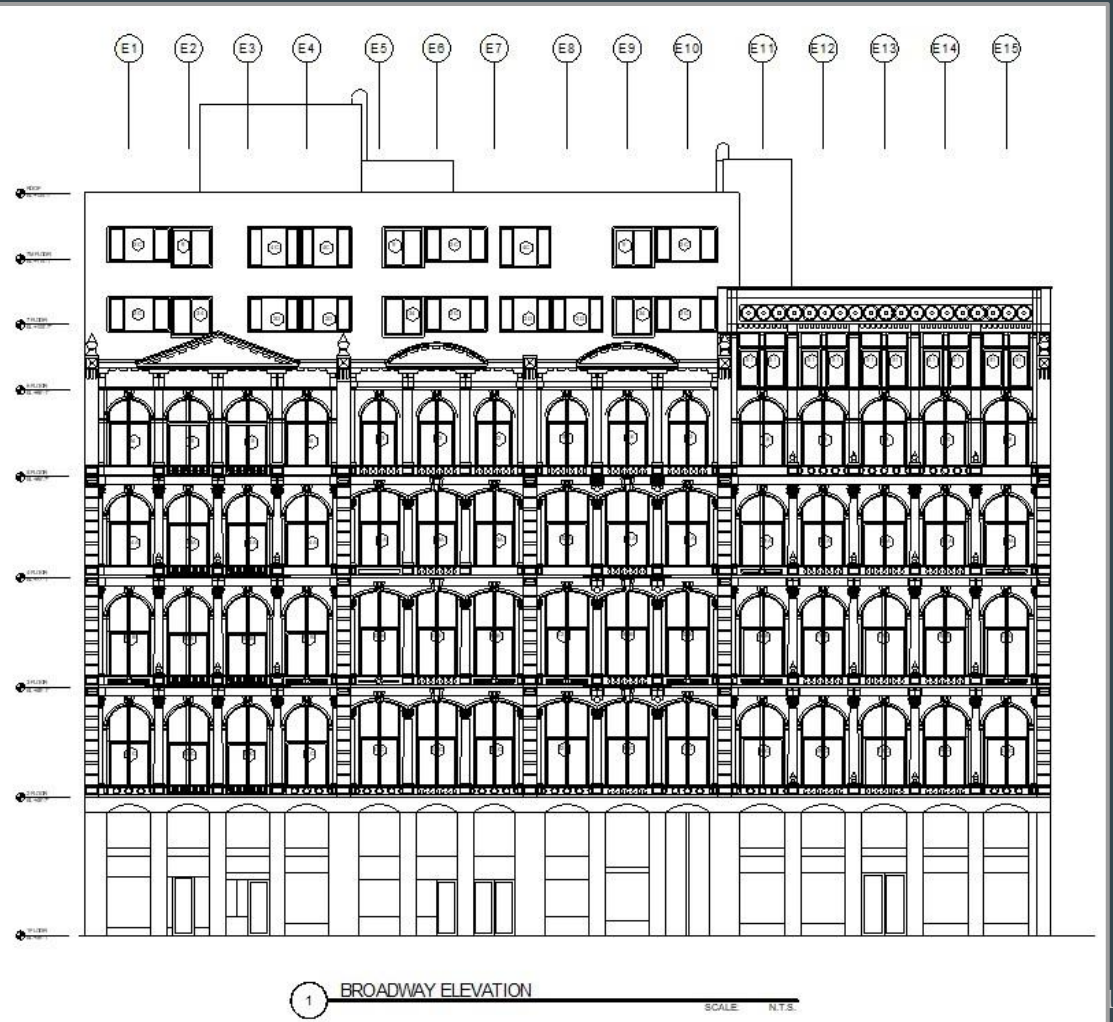
Proposed

BROADWAY ELEVATION





BROADWAY FACADE



1

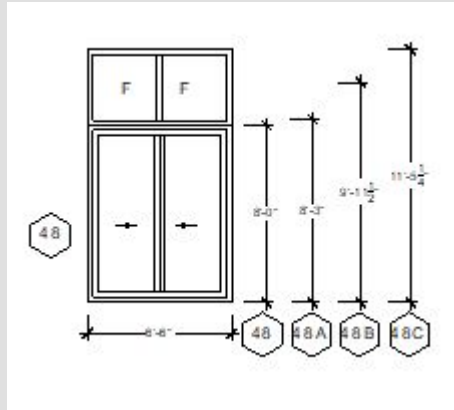
BROADWAY ELEVATION

SCALE N.T.S.

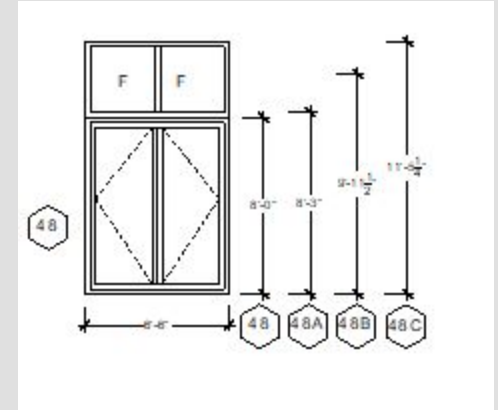
WINDOWS AT BROADWAY



Window Type 48



Existing

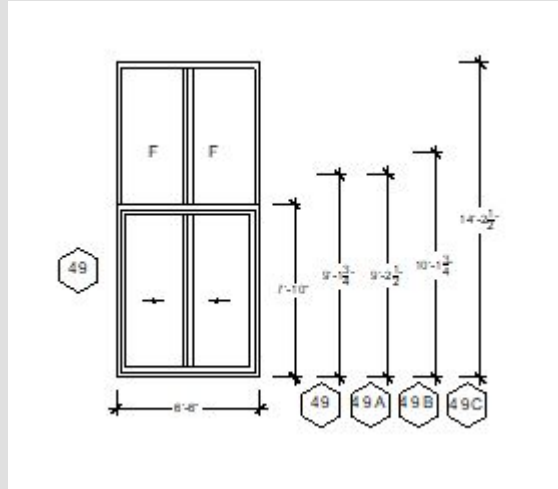


Proposed

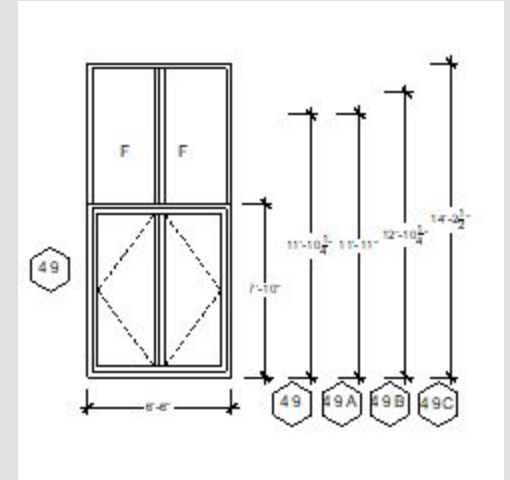
WINDOWS AT BROADWAY



Window Type 49



Existing

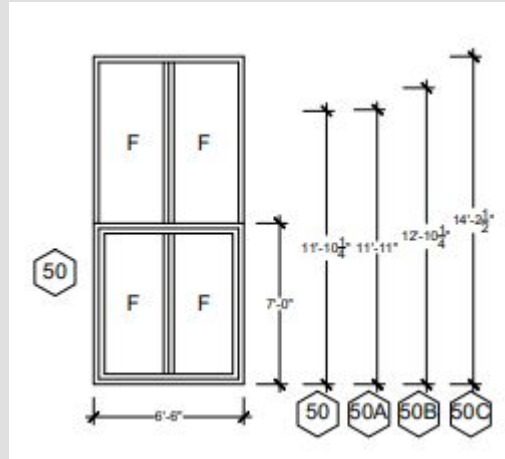


Proposed

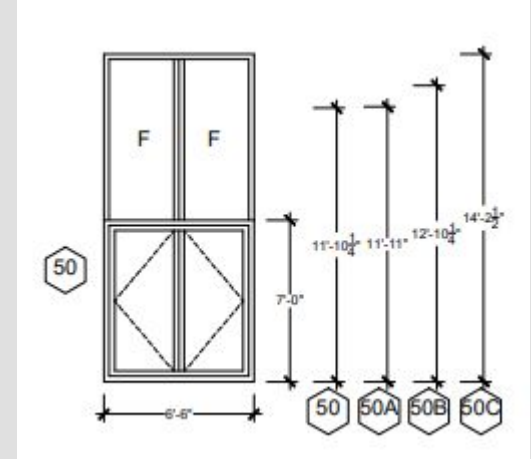
WINDOWS AT BROADWAY



Window Type 50



Existing

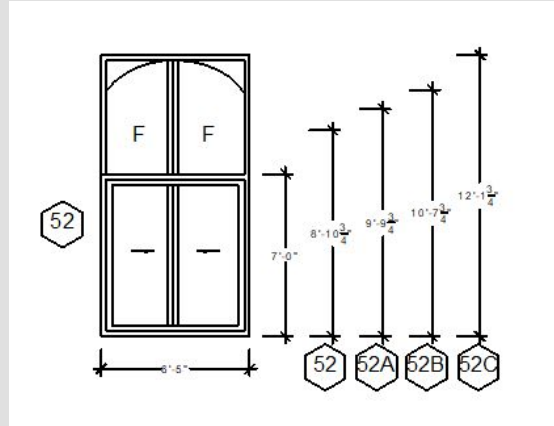


Proposed

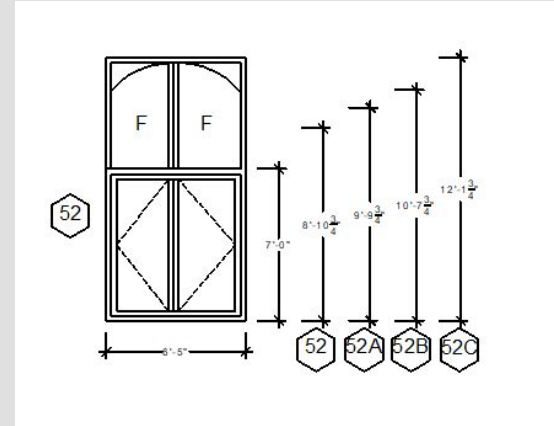
WINDOWS AT BROADWAY



Window Type 52



Existing

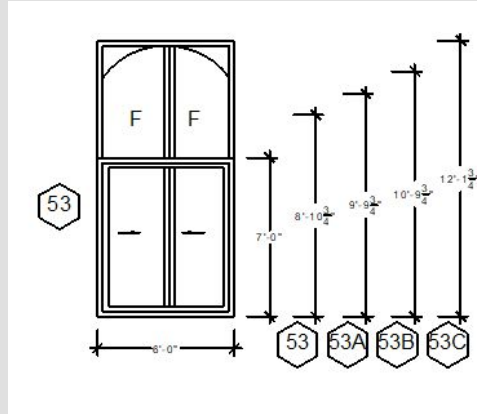


Proposed

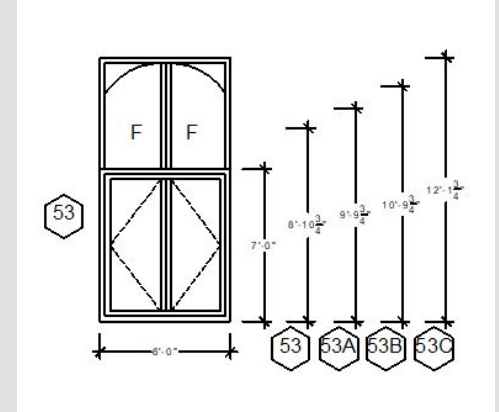
WINDOWS AT BROADWAY



Window Type 53



Existing

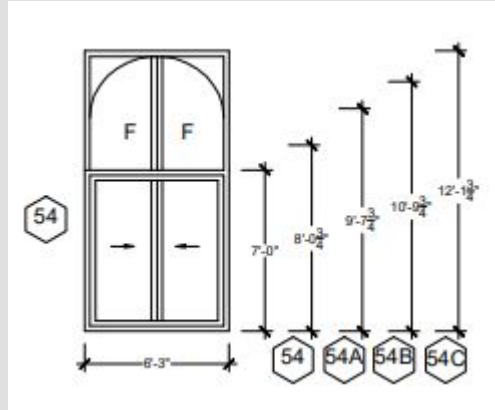


Proposed

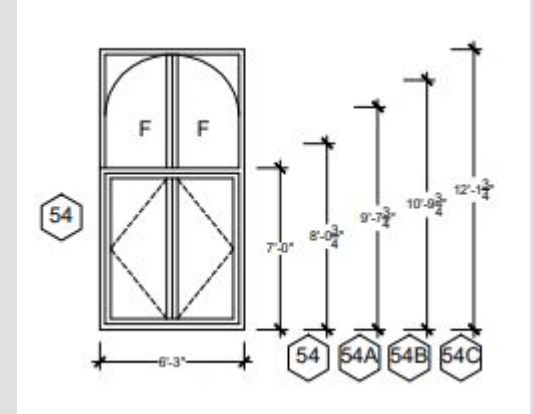
WINDOWS AT BROADWAY



Window Type 54



Existing

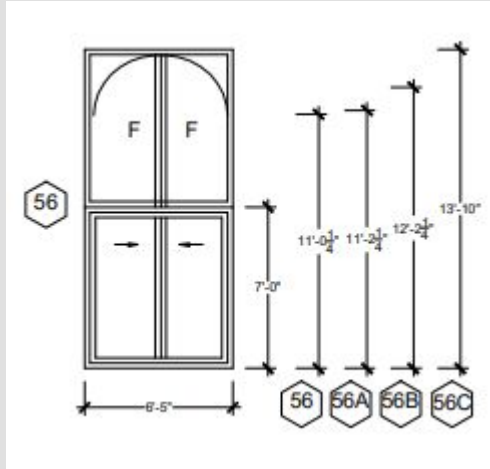


Proposed

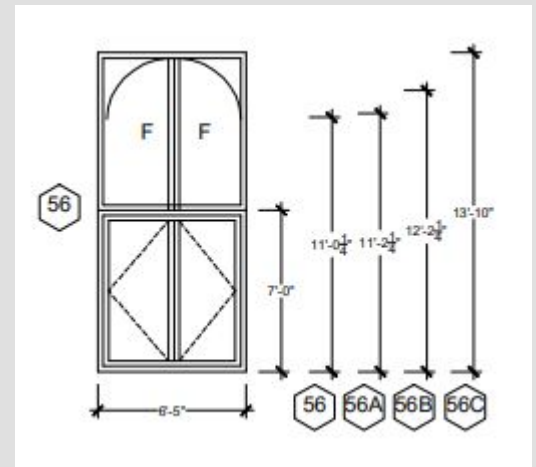
WINDOWS AT BROADWAY



Window Type 56

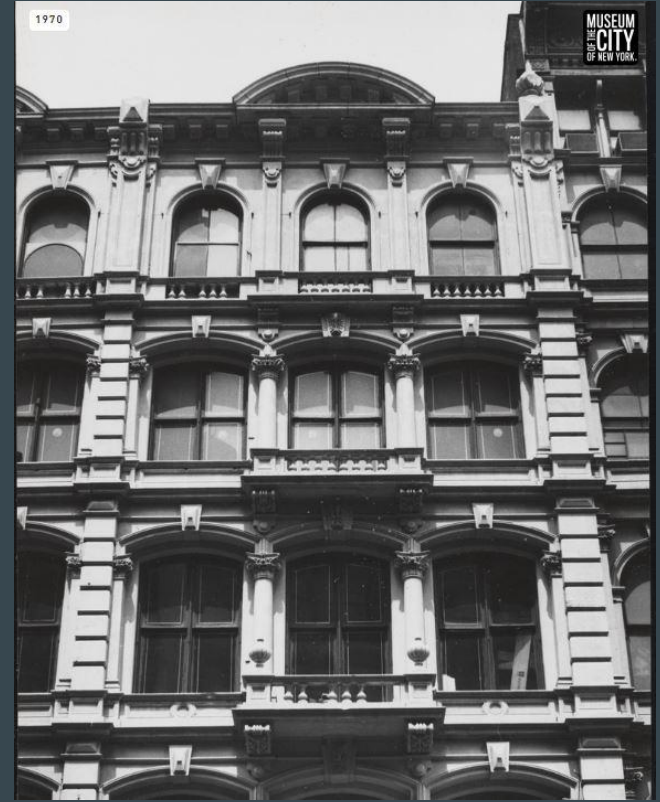


Existing



Proposed

HISTORICAL PHOTO OF BROADWAY ELEVATION



TAX PHOTO- BROADWAY FACADE (1940)

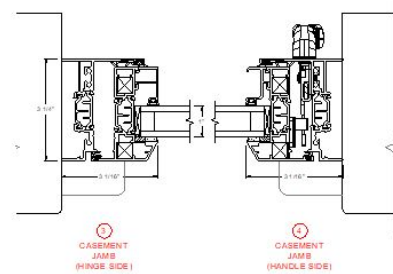
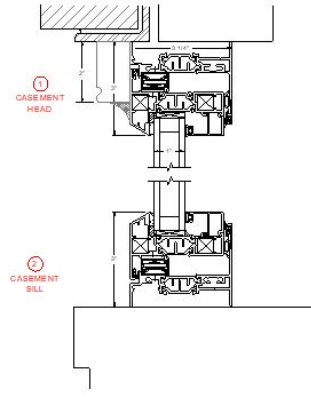
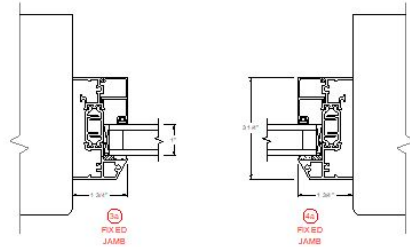
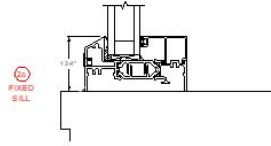
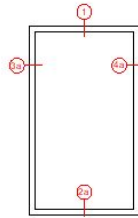
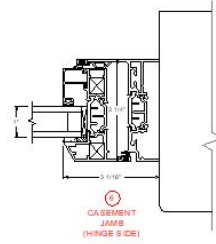
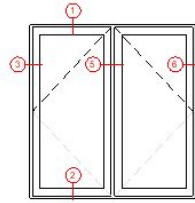
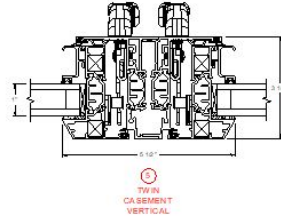
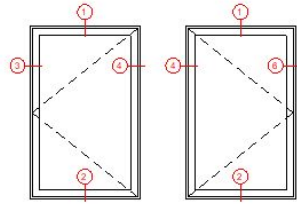




DESIGNATION PHOTO



DETAILS



PHOTOS OF EXISTING SLIDER WINDOWS



WINDOW TYPE 42 MERCER STREET ELEVATION



WINDOW TYPE 52 BROADWAY ELEVATION

PHOTO OF PROPOSED OUTSWING WINDOW (NORTHERN CASEMENT SERIES 1600)



EXTERIOR VIEW



INTERIOR VIEW



PRODUCT OVERVIEW

From revitalizing historic buildings to creating new construction façades, the 1600 Series is one of our most versatile and elegant products. Featuring sleek modern hardware, putty reveal and narrow sightlines, the 1600 Series is designed to exceed expectations.

STANDARD FEATURES

- > 1" Insulated glass
- > Thermally broken sash and frame
- > Double crimped corner key construction
- > Concealed 4-bar stainless steel hinges
- > Integrated pull bead handle with multipoint locking
- > Multiple joinery options between operable and fixed
- > Narrow sightlines with putty reveal to replicate historic and landmark profiles
- > Compression gaskets for improved thermal and acoustic performance

OPTIONAL FEATURES

- > White Bronze Cam handle operation
- > Roto operator
- > Muntin grids exterior, between the glass, interior applied
- > True divided lites
- > Fiberglass mesh screens
- > 4" limit device
- > Window Opening Control Devices (WOCD)
- > Add-on Flanges (1 1/2", 2")
- > Strutted design to meet NYCECC2020 energy code
- > Dual finish, two-tone color

AVAILABLE ACCESSORIES

- > Receptor system
- > Planning
- > Trim

TYPE	AAMA RATING	STRUCTURAL LOAD (psf)	TEST SIZE	WIND SPEED (mph)	AIR (cfm/ft ²)	WATER (psf)	U-VALUE ¹
Casement	AW-65 / 80	97.5 / 120	36" x 60"	50 (6.24psf)	<0.1	12	0.38 - 0.45
Fixed	AW-65 / 90	97.5 / 135	60" x 96"	50 (6.24psf)	<0.1	12	0.35 - 0.38
Awning	AW-65 / 80 / 85	97.5 / 120 / 127.5	60" x 36"	50 (6.24psf)	<0.1	12	0.35 - 0.45
Fixed / Awning	AW-45 / 50 / 70	67.5 / 75 / 105	60" x 96"	50 (6.24psf)	<0.1	12	0.35 - 0.45

Performance data based on testing by AAMA Accredited Laboratory, NFRC Simulation software or independent testing. Actual results will vary based on field conditions, locations, microclimate/gaskets or glazing options. Be sure to verify the performance requirements for your particular project. ¹U-values will vary depending on the glazing selected. Please contact Northern for further information.

