

225 West 4th Street
April 14, 2022



Ruby's



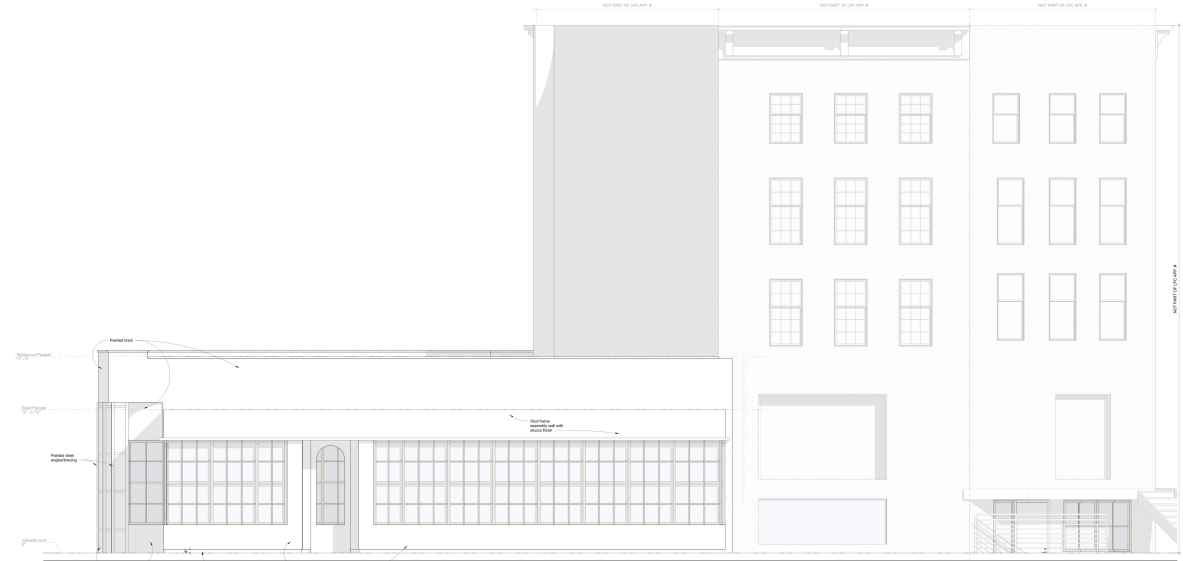
JACQUELINE PEU-DUVALLO
HISTORIC PRESERVATION CONSULTING, LLC

Grzywinski+Pons Architects

Cover Sheet
225 West 4th Street
Proposed Façade Alteration
April 14, 2022



Existing Conditions – Façades



Proposed Front Façade Elevations

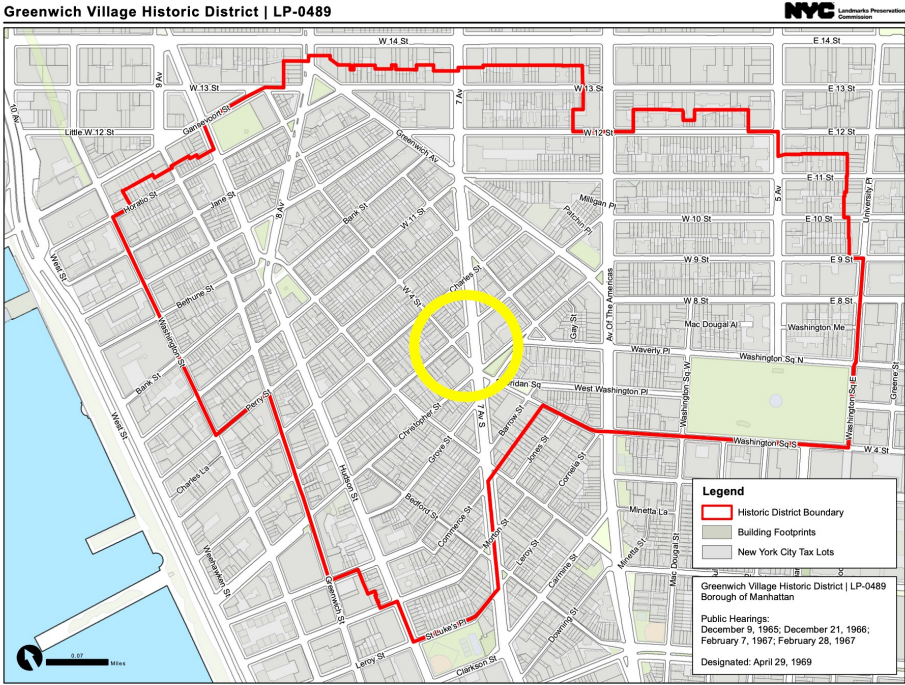


JACQUELINE PEU-DUVALLO
HISTORIC PRESERVATION CONSULTING, LLC

Grzywinski+Pons Architects

Project Location

Streetscape photos here looking north and south on Seventh Ave, with subject buildings at center



Insert Historic District with location highlighted



Streetscape photos of West 4th Street, opposite side of the street.



JACQUELINE PEU-DUVALLO
HISTORIC PRESERVATION CONSULTING, LLC

Grzywinski+Pons Architects

Existing Conditions



JACQUELINE PEU-DUVALON
HISTORIC PRESERVATION CONSULTING, LLC

Grzywinski+Pons Architects

Historic Images



1930: 225 West 4th Street (NYPL)



1933: 225 West 4th Street. PL Sperr. (NYPL)



1937: 225 West 4th Street (NYCPL)



JACQUELINE PEU-DUVALON
HISTORIC PRESERVATION CONSULTING, LLC

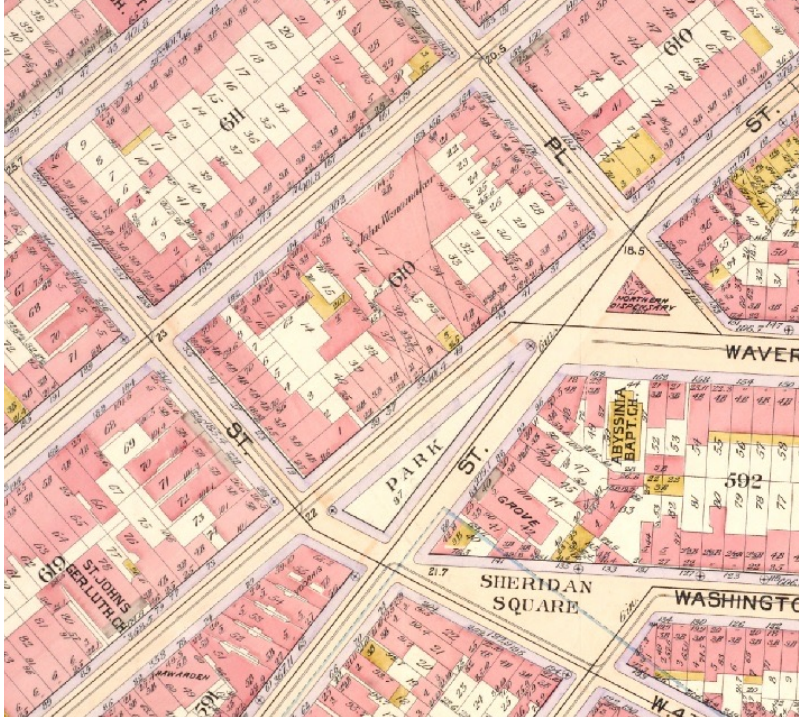
Grzywinski+Pons Architects

Block Development

Historic map images for the block, and current block plan

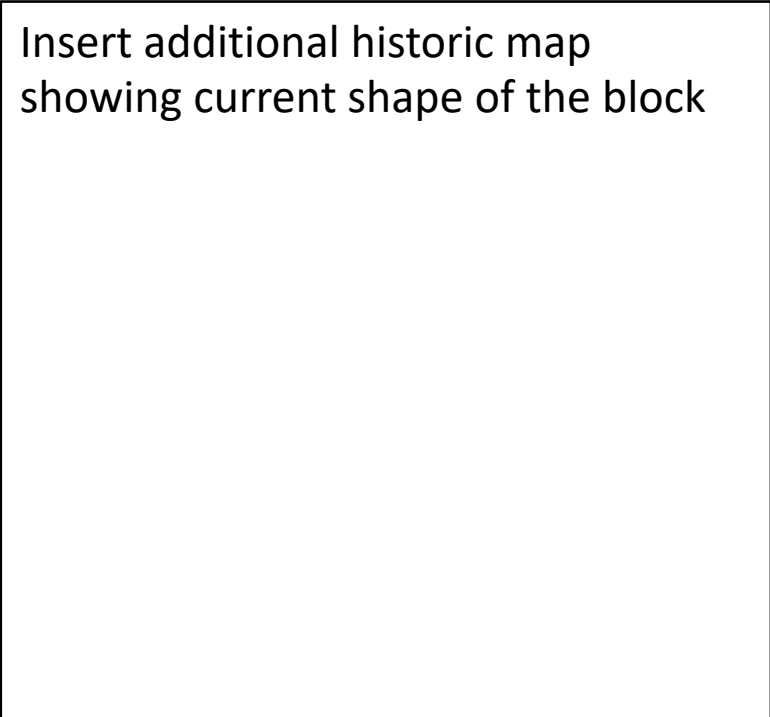


1862 Perris Map (NYPL)



1899 Bromley Map (NYPL)

1927, Bromley Map (NYPL)



Insert additional historic map showing current shape of the block

1925 Sanborn Map (NYPL)



JACQUELINE PEU-DUVALON
HISTORIC PRESERVATION CONSULTING, LLC

Grzywinski+Pons Architects

Proposed Alterations

Existing and proposed condition of each façade at the 'triangle' building: elevations and details

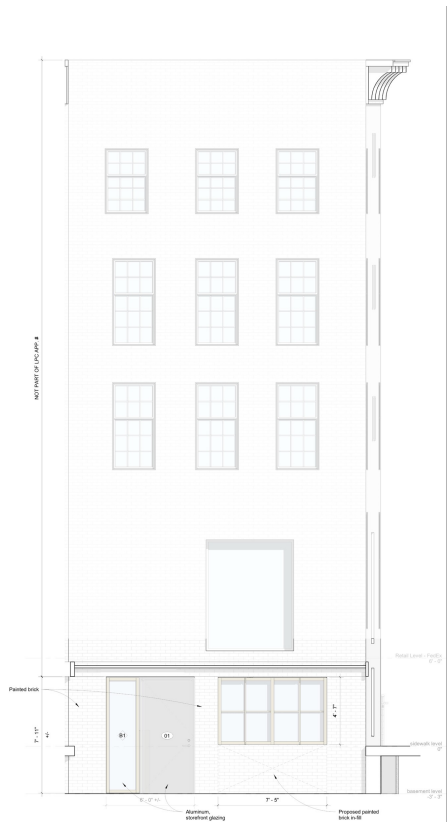


JACQUELINE PEU-DUVALON
HISTORIC PRESERVATION CONSULTING, LLC

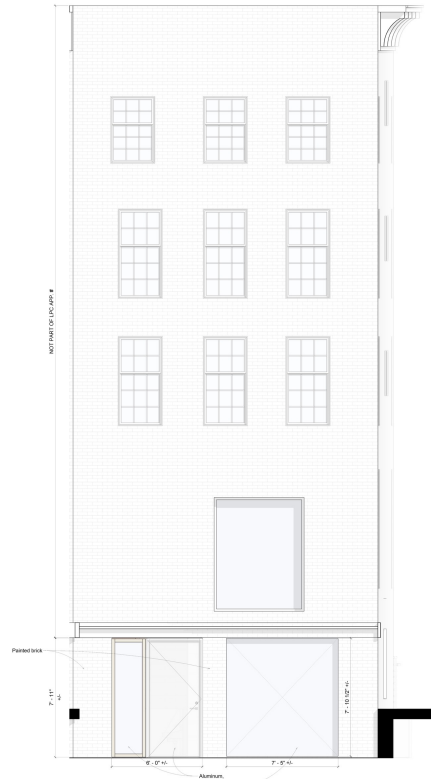
Grzywinski+Pons Architects

Existing & Proposed Building Section – View East

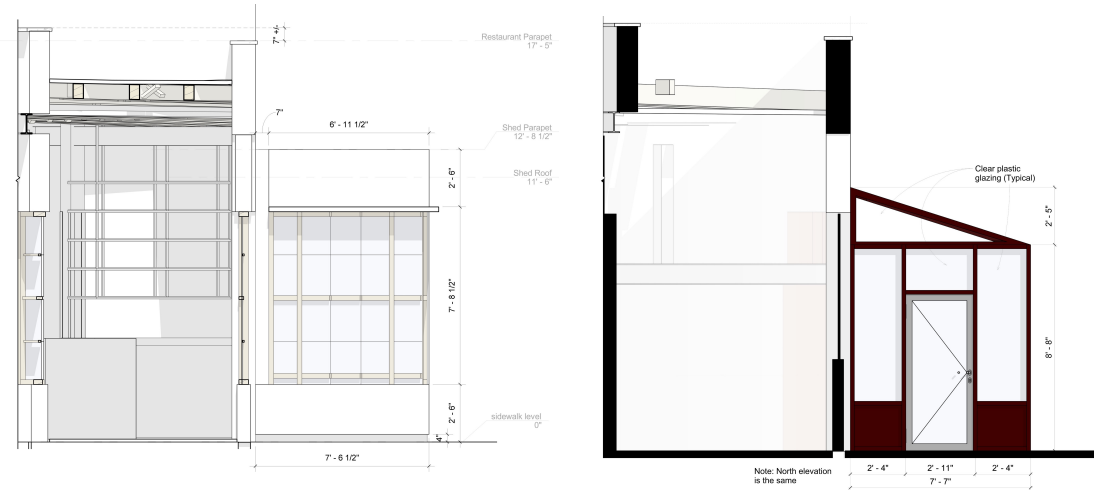
Drawings for the existing and proposed condition of each partial façade at the other buildings in the block – elevations and details



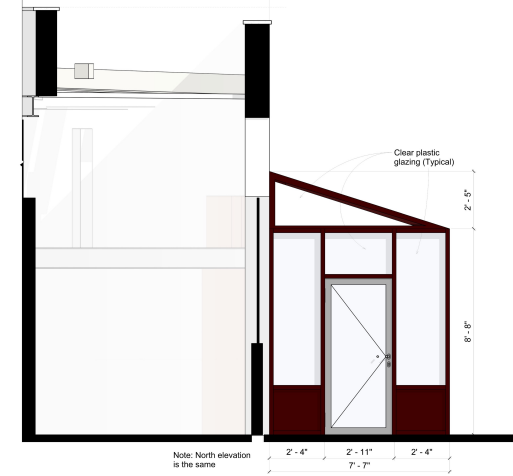
Proposed



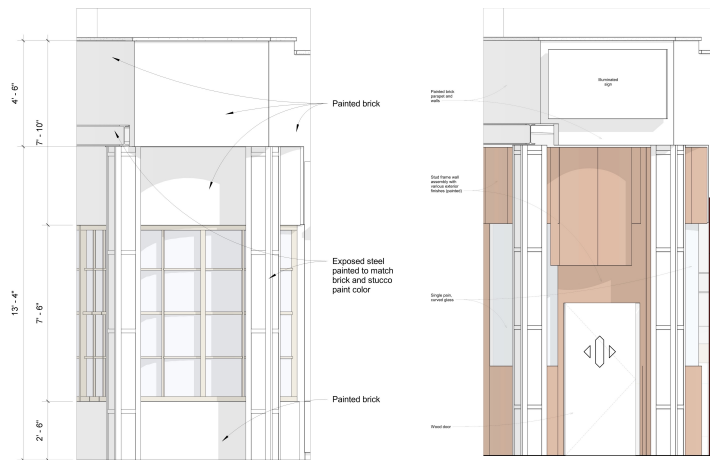
Existing



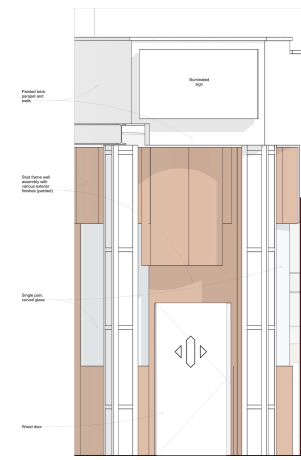
Proposed



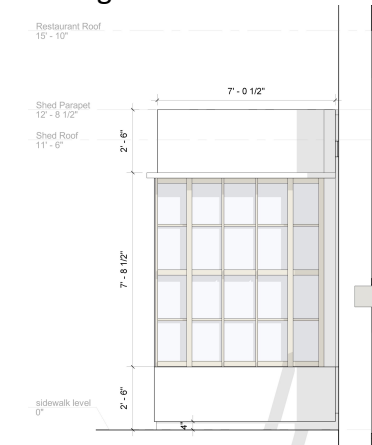
Existing



Proposed



Existing



Proposed



JACQUELINE PEU-DUVALON
HISTORIC PRESERVATION CONSULTING, LLC

Grzywinski+Pons Architects

Existing & Proposed Building Section – View West



JACQUELINE PEU-DUVALON
HISTORIC PRESERVATION CONSULTING, LLC

Grzywinski+Pons Architects

Renderings – East



JACQUELINE PEU-DUVALON
HISTORIC PRESERVATION CONSULTING, LLC

Grzywinski+Pons Architects

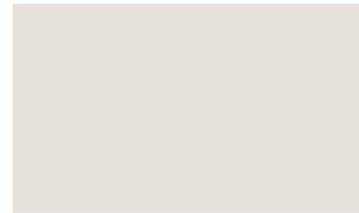
Renderings – West



JACQUELINE PEU-DUVALLO
HISTORIC PRESERVATION CONSULTING, LLC

Grzywinski+Pons Architects

Renderings – South and Materials



external finishes comprised of painted masonry, steel and stucco all painted in color: NCS S 1002-R

proposed fenestration made of timber



JACQUELINE PEU-DUVALLO
HISTORIC PRESERVATION CONSULTING, LLC

Grzywnski+Pons Architects