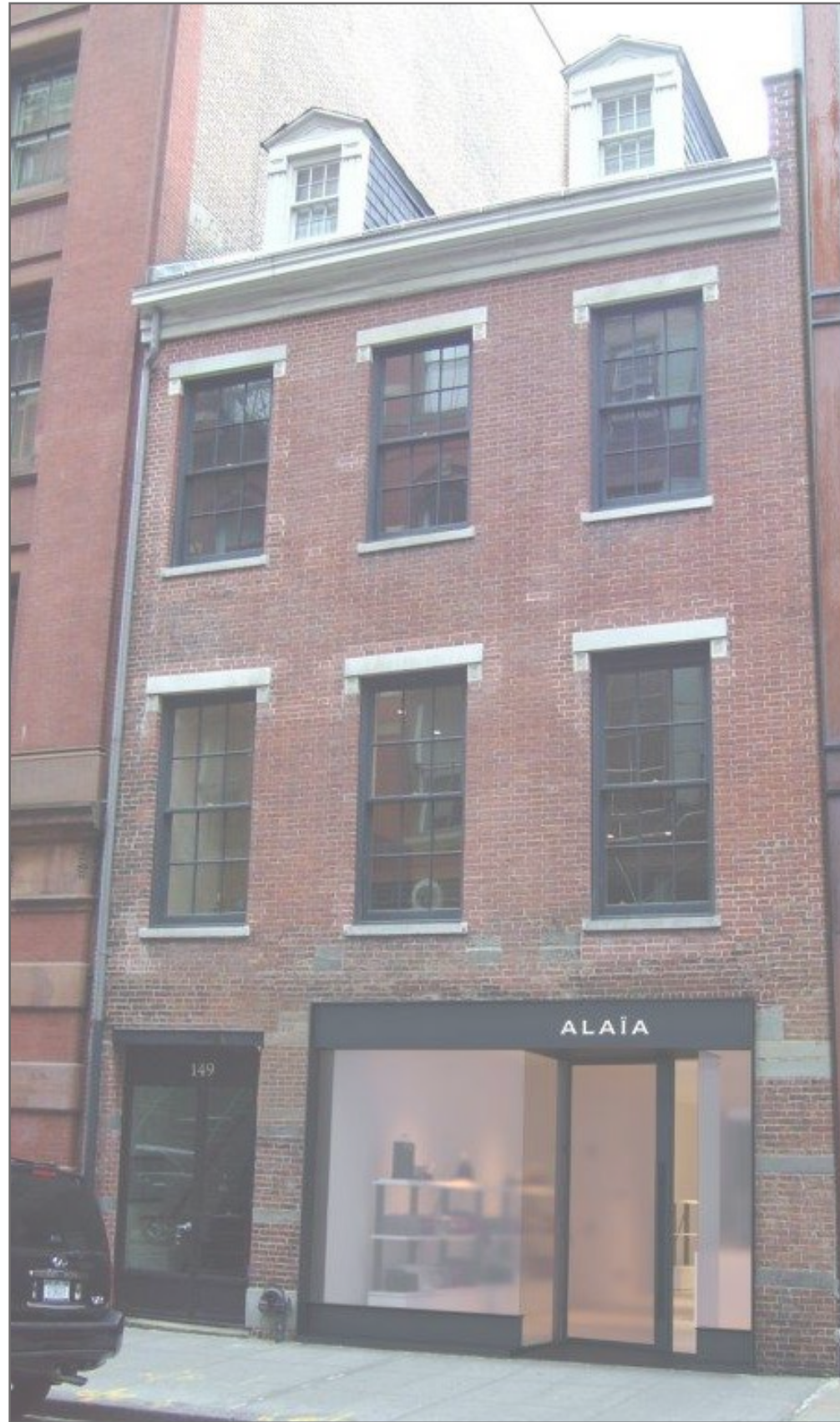


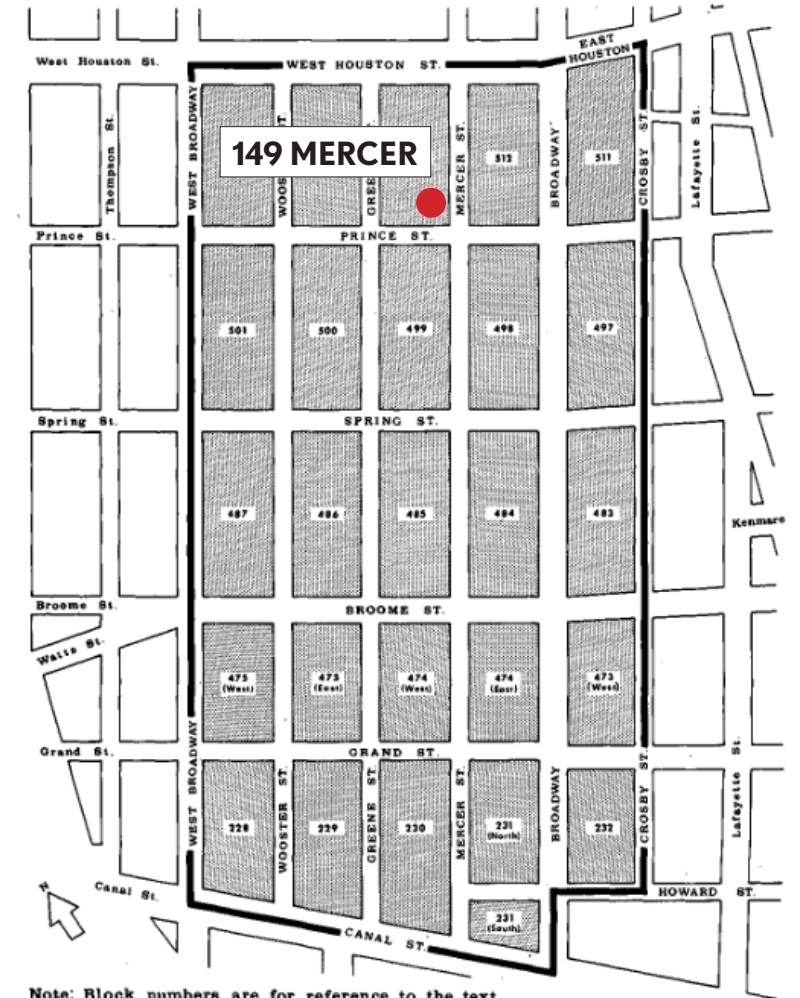


149 Mercer, existing conditions



149 Mercer, proposed **DRAFT - DOOR TO BE UPDATED**

**SOHO-CAST IRON HISTORIC DISTRICT  
MANHATTAN**



Note: Block numbers are for reference to the text.  
**DESIGNATED AUGUST 14, 1973**

SoHo-Cast Iron Historic District, designated boundaries.



149 Mercer Block Plan



149 Mercer, ca. 1940 Tax Photograph [NY Archives]



ca. 2000



2022, existing conditions



149 Mercer Street, at center (1940, NYC Tax Photograph)

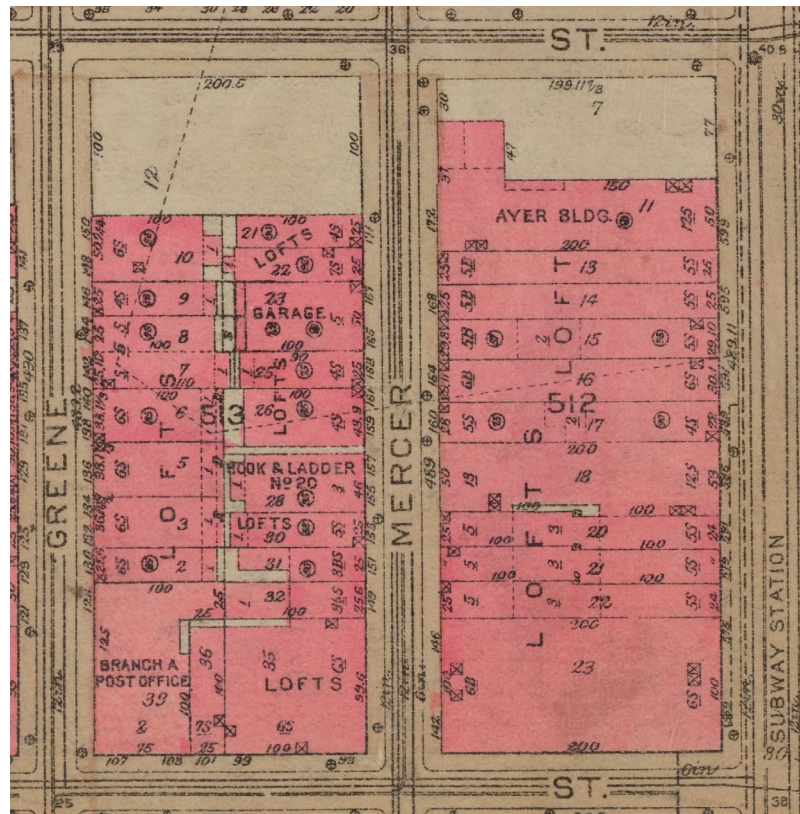


165-167 Mercer Street (1940, NYC Tax Photograph)



North on Mercer from Prince (1934, Municipal Archives)

**DRAFT - UPDATE WITH HI-RES**



1930 Bromley Insurance Map



171 Mercer Street (1940, NYC Tax Photo)



Firemen's Hall, ADDRESS (1905, MCNY)



DRAFT - UPDATE WITH HI RES



Mercer Street, applied texture glazing



Mercer Street, typical "back-of-house" conditions



Mercer Street, historic shuttered windows



133 Mercer Street



nce Street



484 Broadway



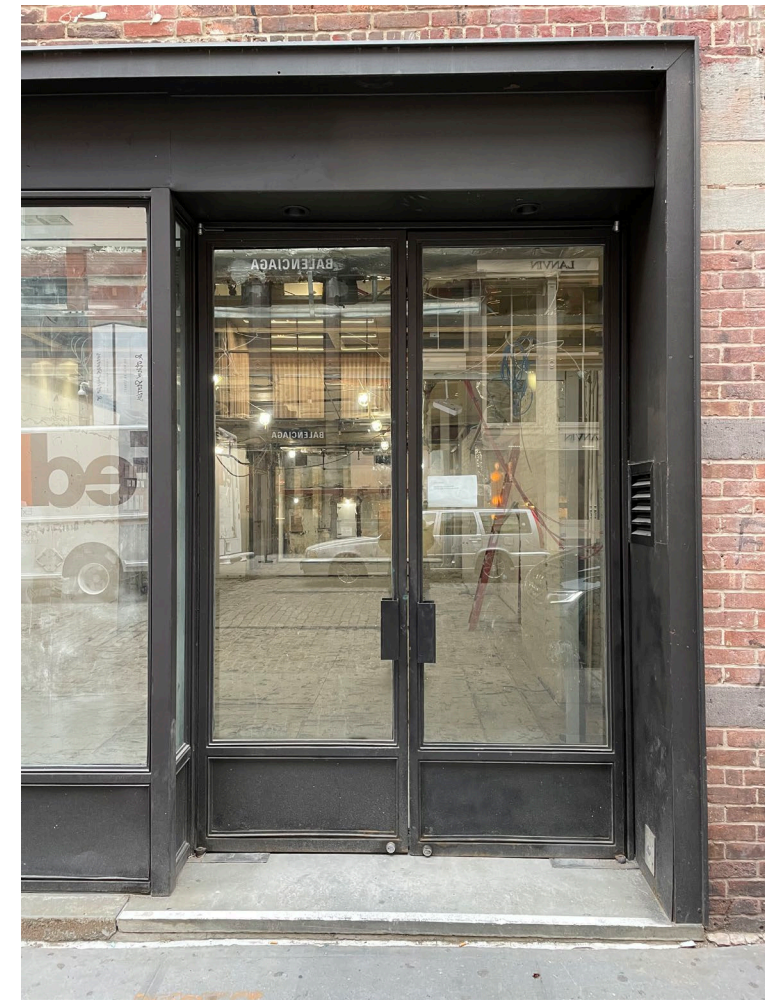
42 Greene Street



Residential entry doors.



Storefront overview, looking southwest.



Retail entry doors.



Residential entry, granite sill.



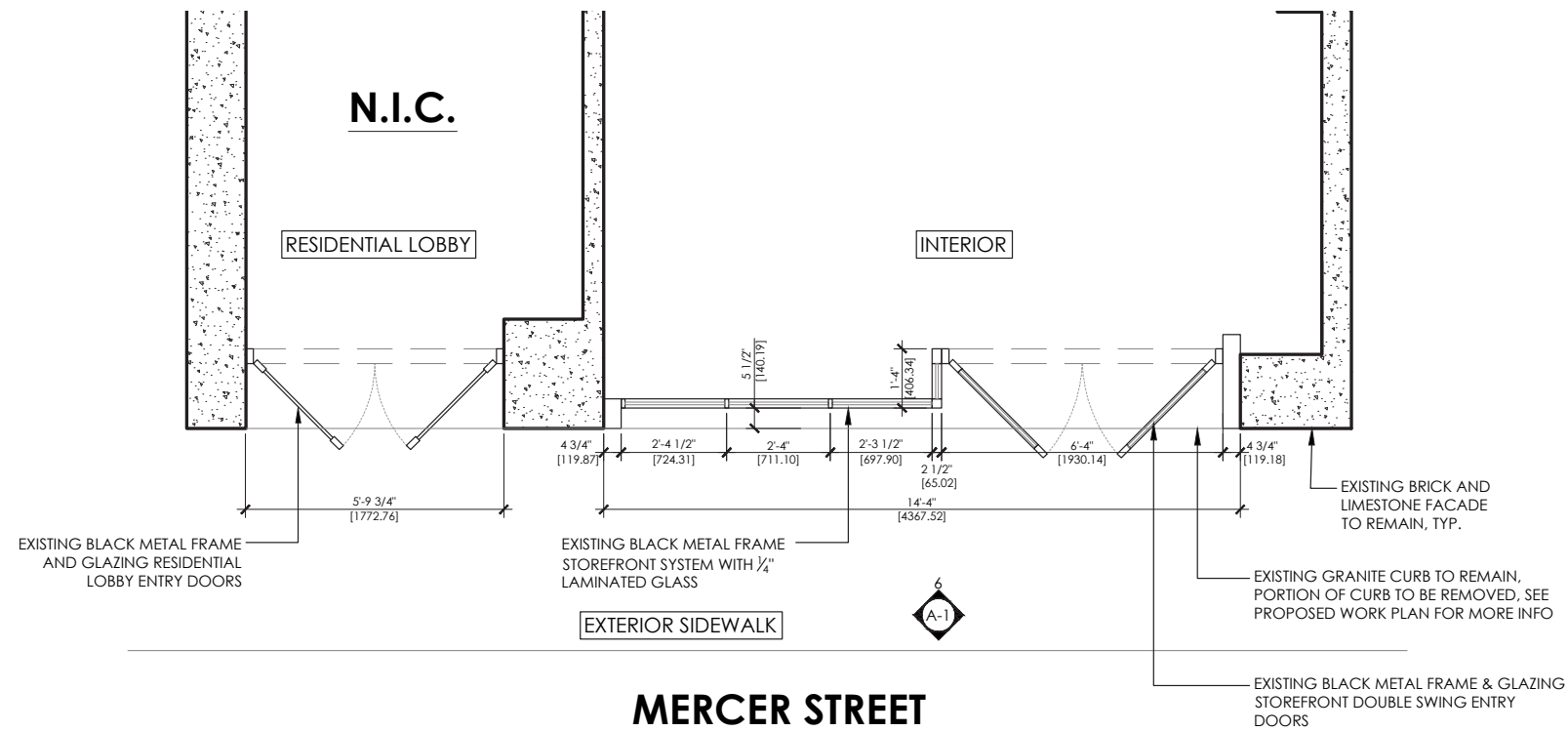
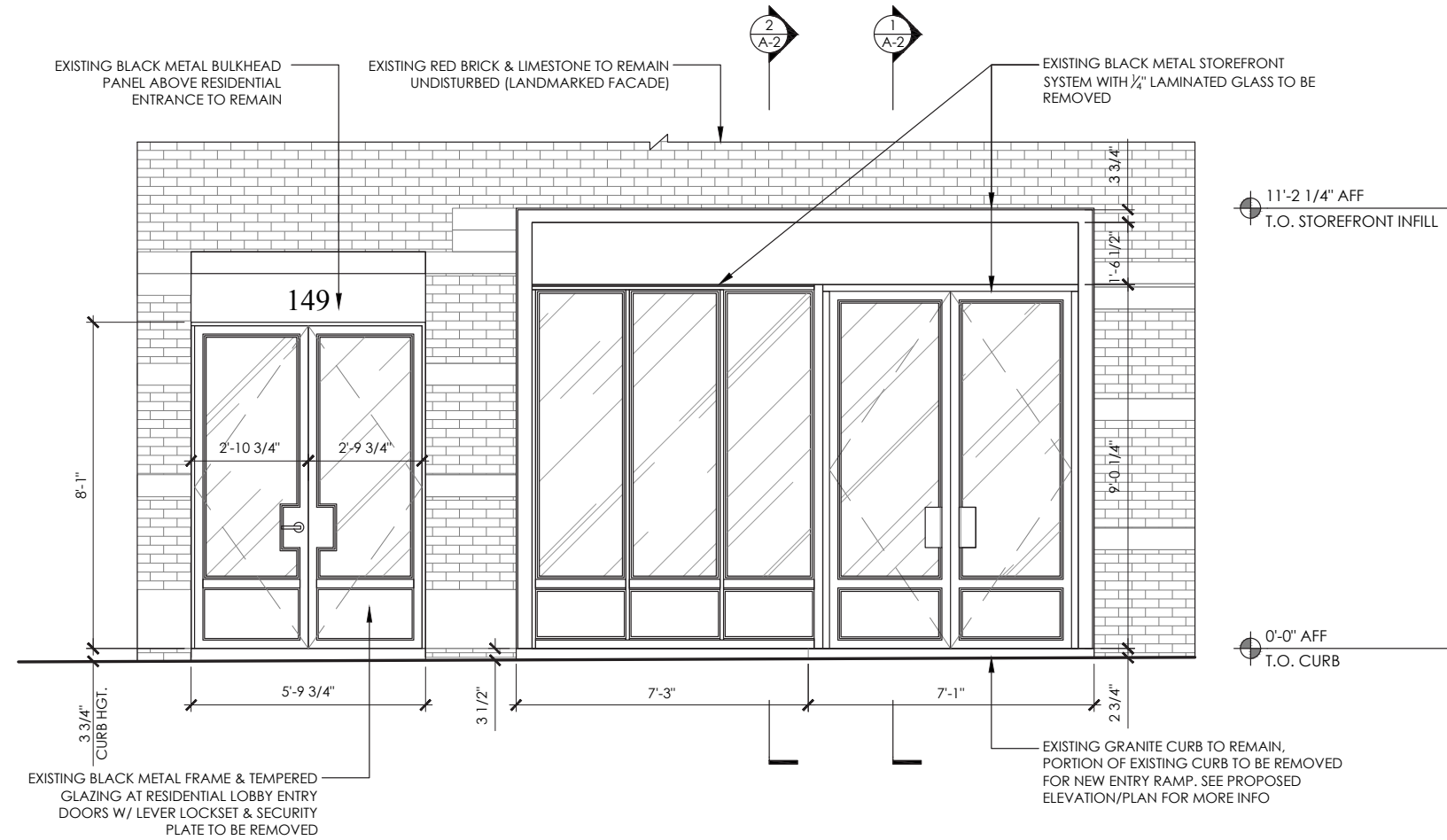
Storefront base, granite sill.



Retail entry header and lighting detail.



TO BE UPDATED WITH NEW ENTRY DOOR



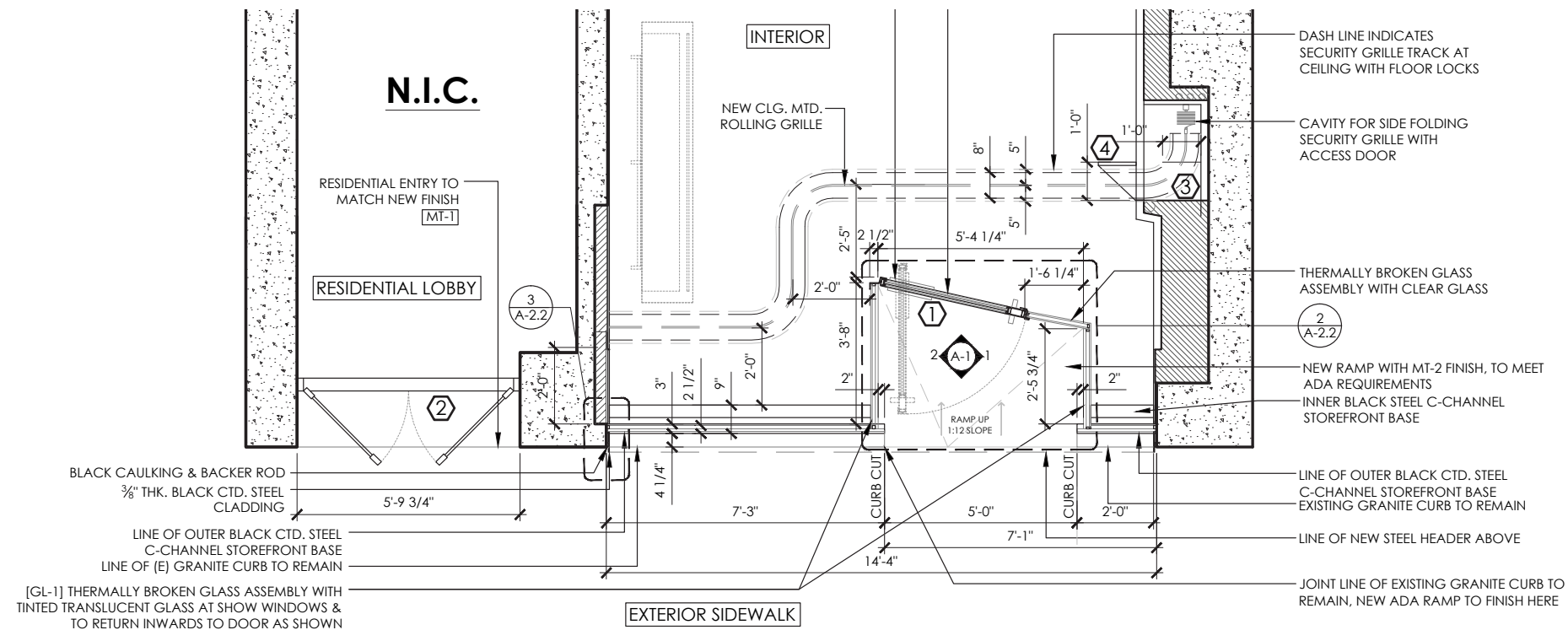
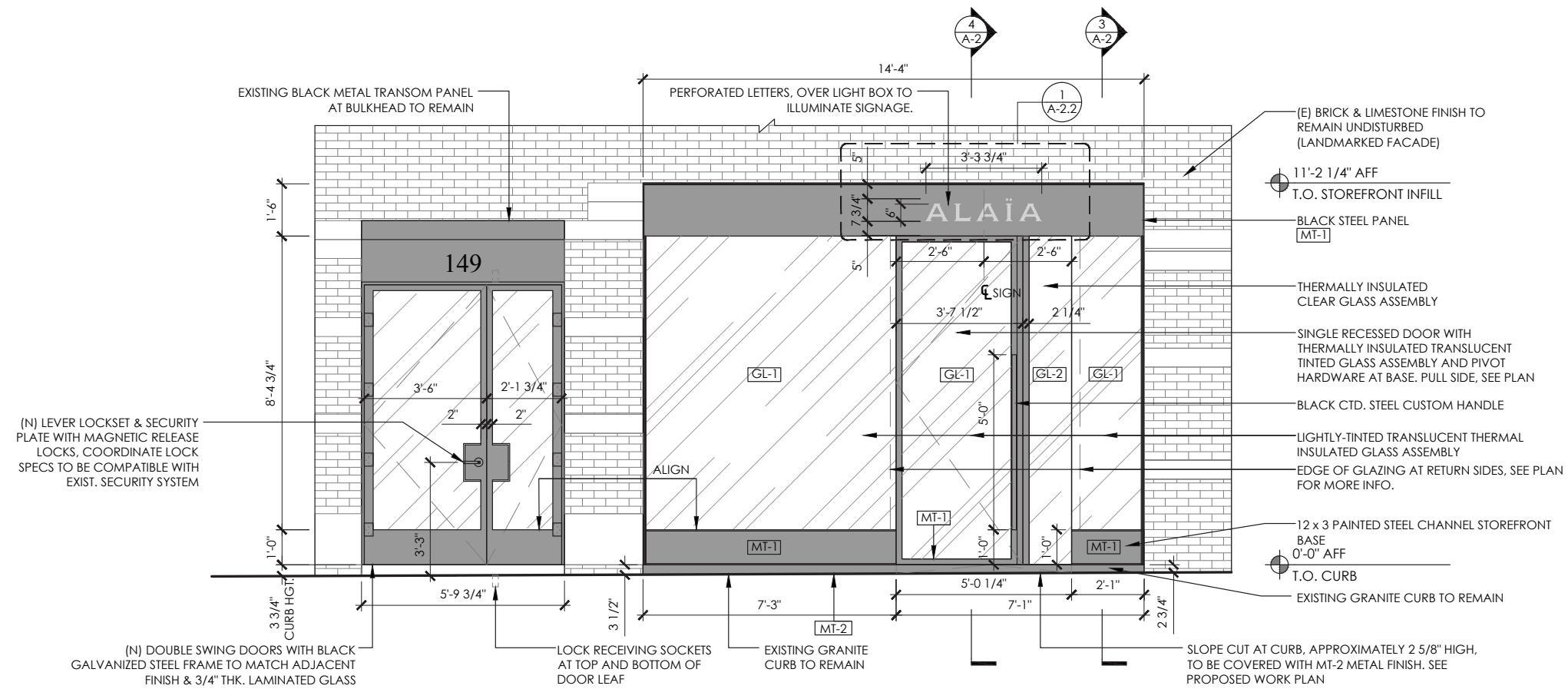
**MERCER STREET**

**EXISTING STOREFRONT PLAN & ELEVATION**

149 MERCER STREET

LPC PUBLIC HEARING • 7 JUNE 2022





MERCER STREET

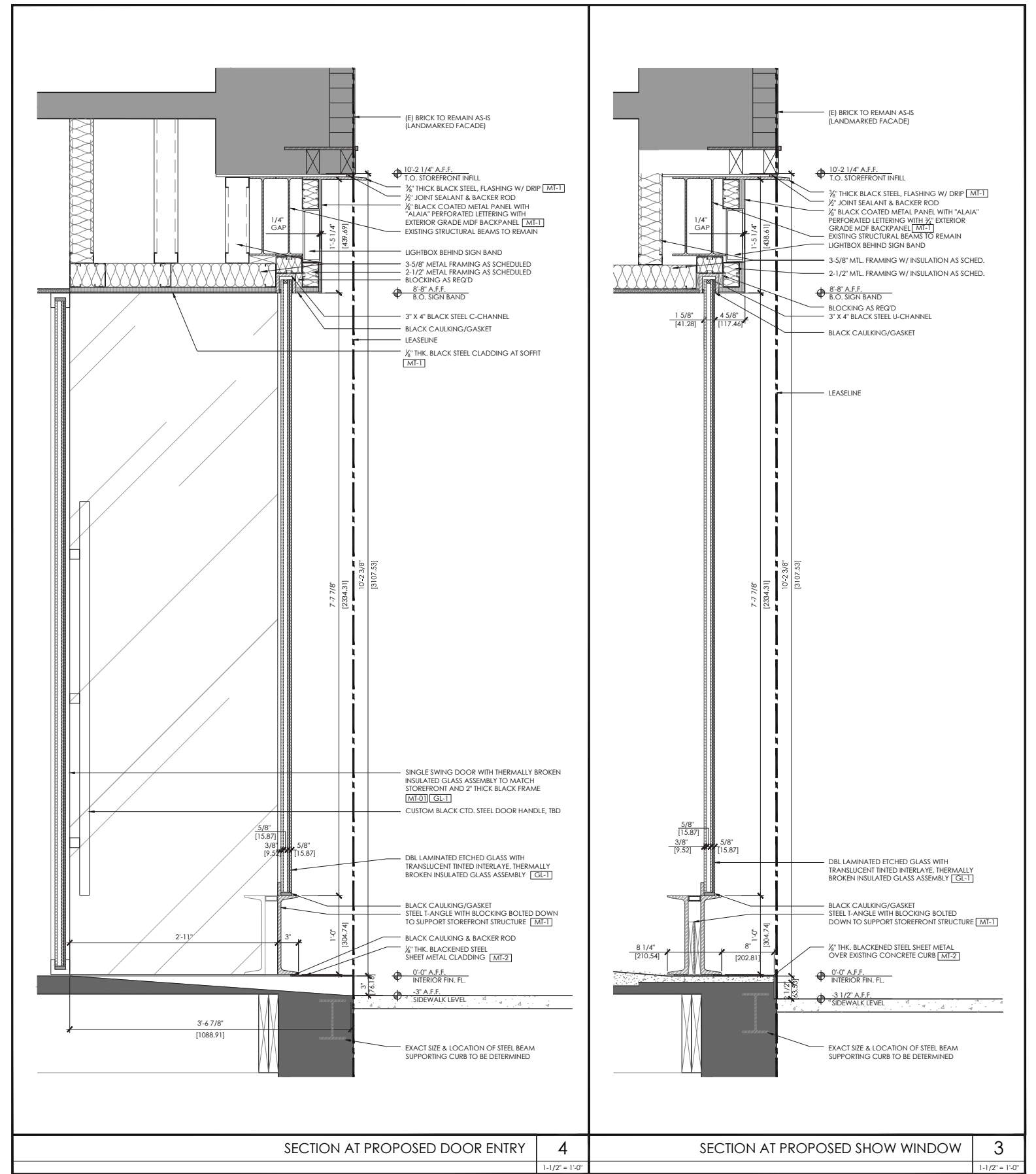
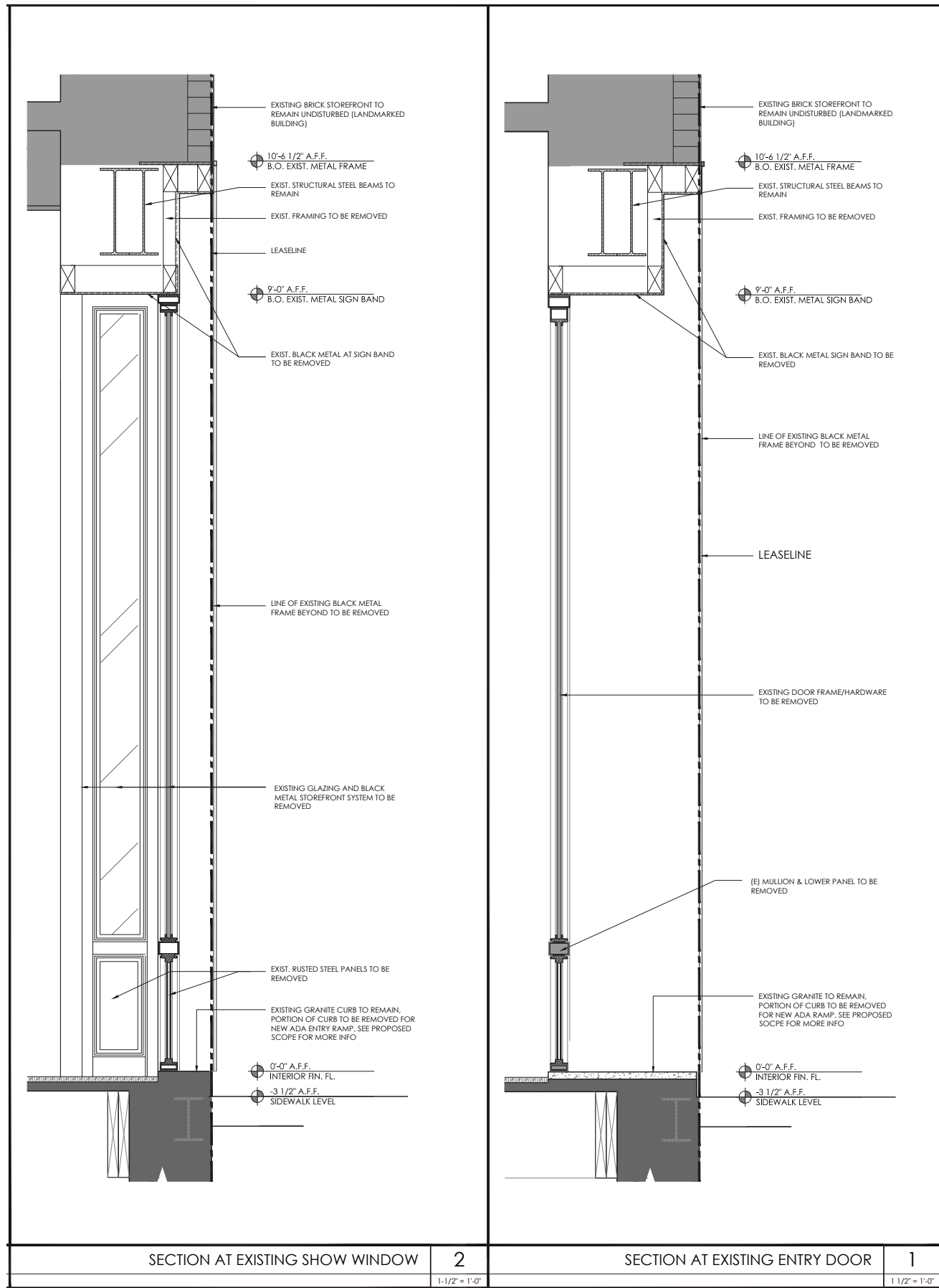


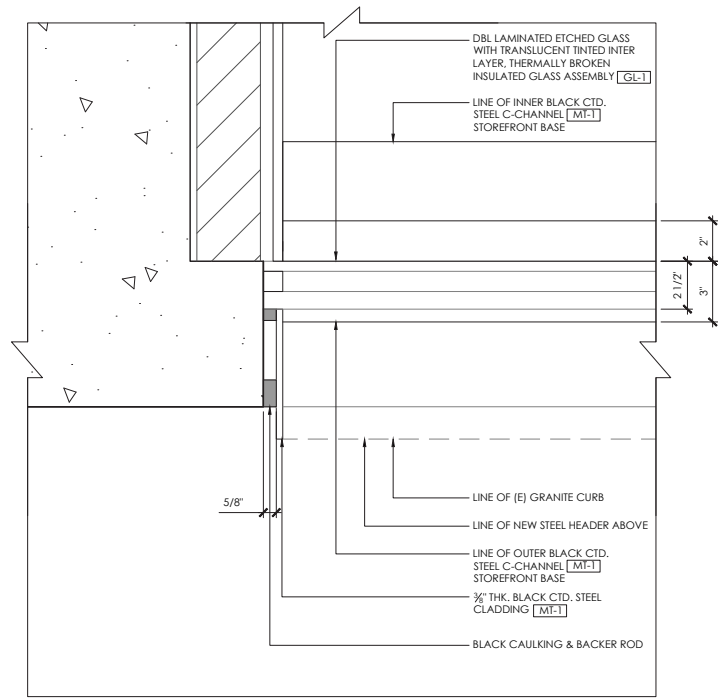
PROPOSED STOREFRONT PLAN & ELEVATION

149 MERCER STREET

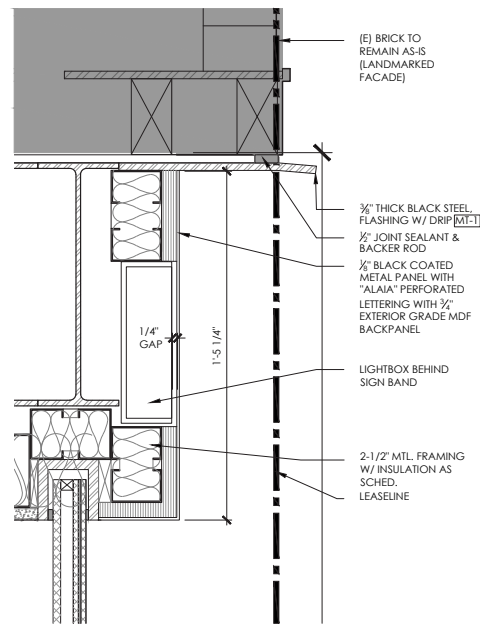
LPC PUBLIC HEARING • 7 JUNE 2022



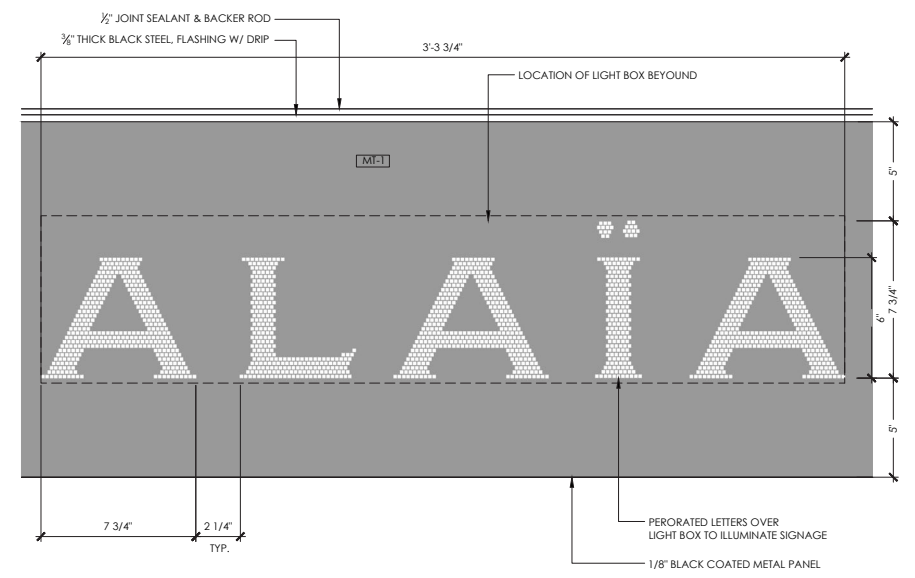




STOREFRONT FACADE PLAN DETAIL AT NEUTRAL PIER 3  
3" = 1'-0"

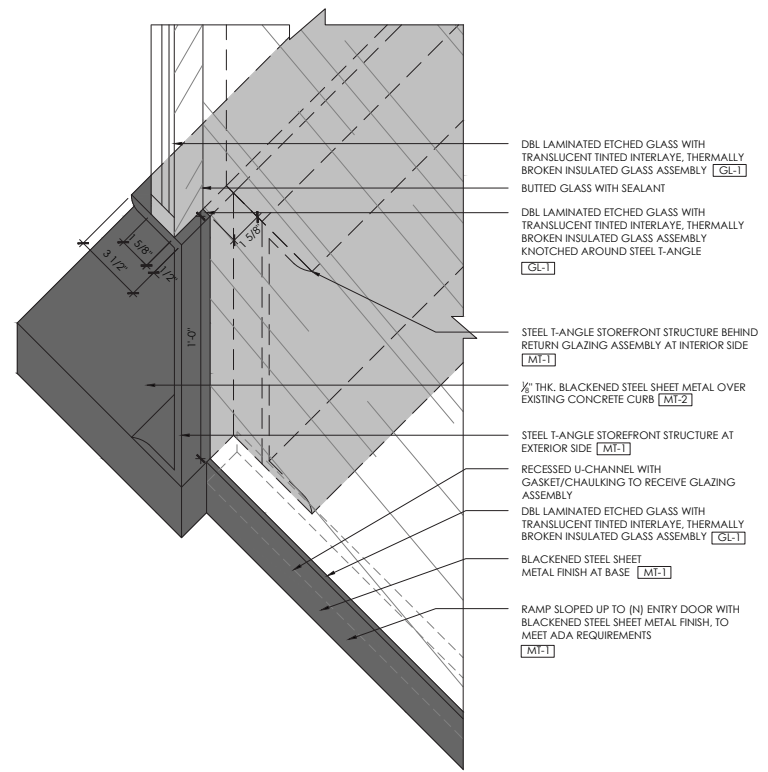


(B) SECTION

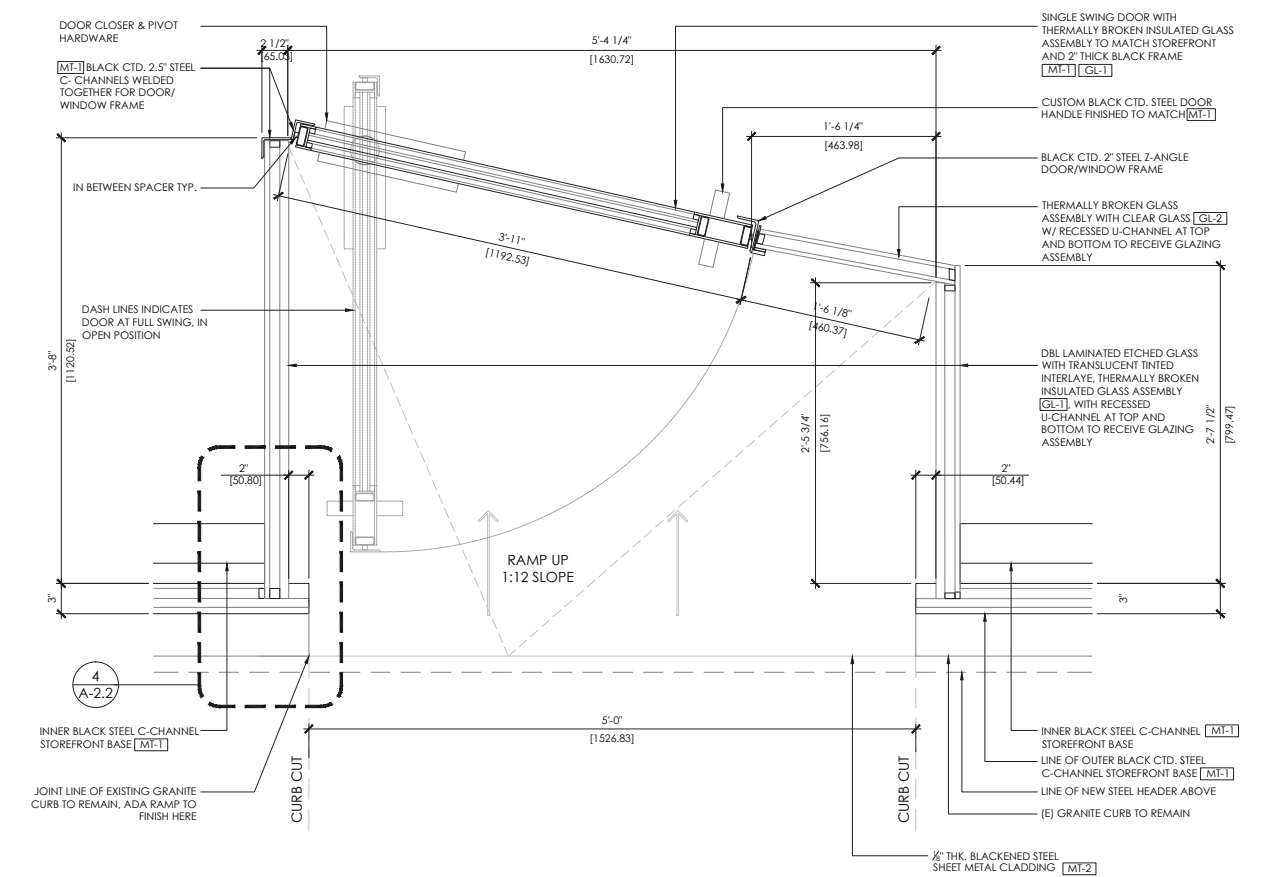


(A) ELEVATION

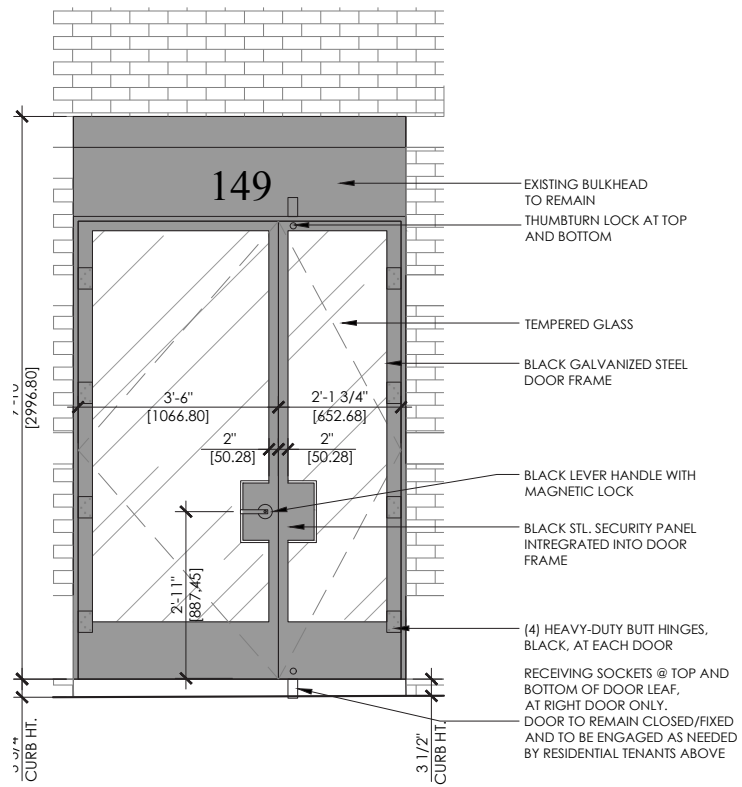
STOREFRONT SIGNAGE DETAILS 1  
3" = 1'-0"



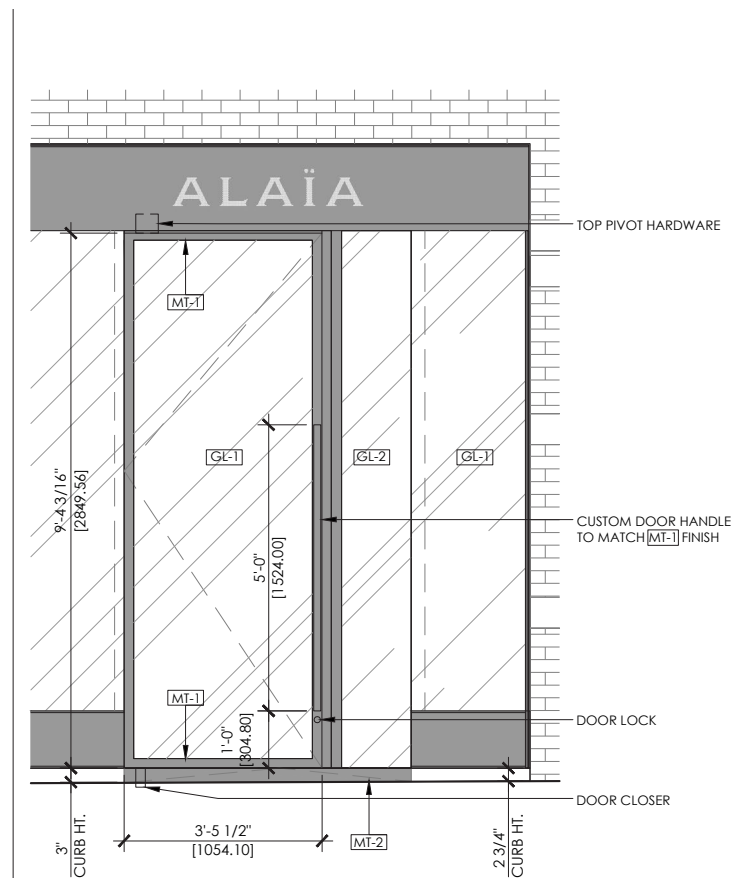
AXONOMETRIC DETAIL AT RETURN OF STEEL ANGLE/GLASS ASSEMBLY 4  
3" = 1'-0"



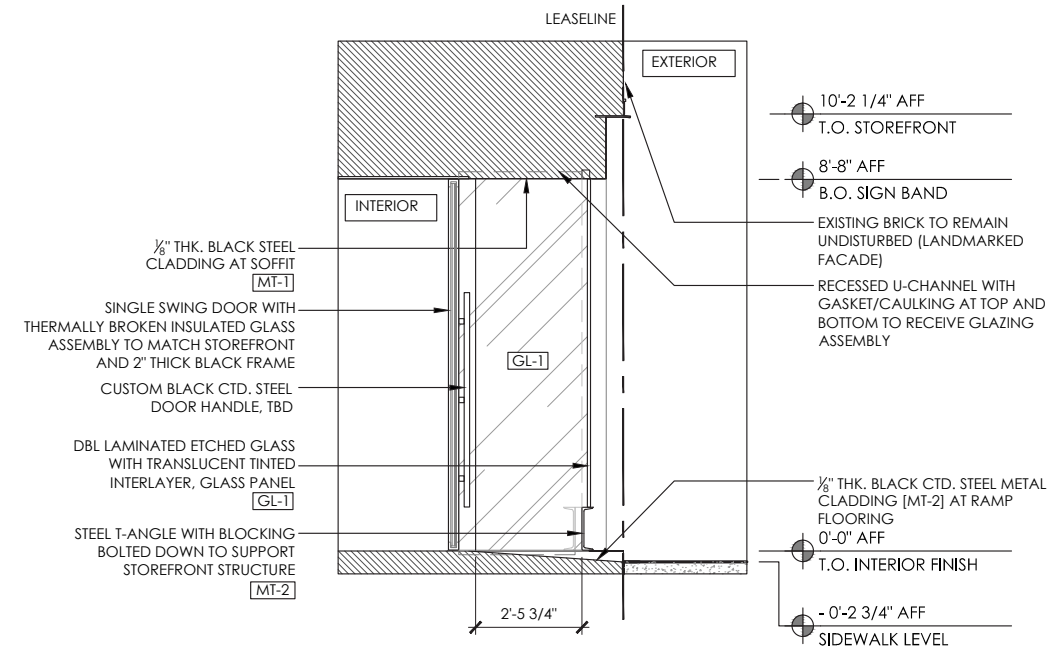
ENLARGED VESTIBULE PLAN 2  
1 1/2" = 1'-0"



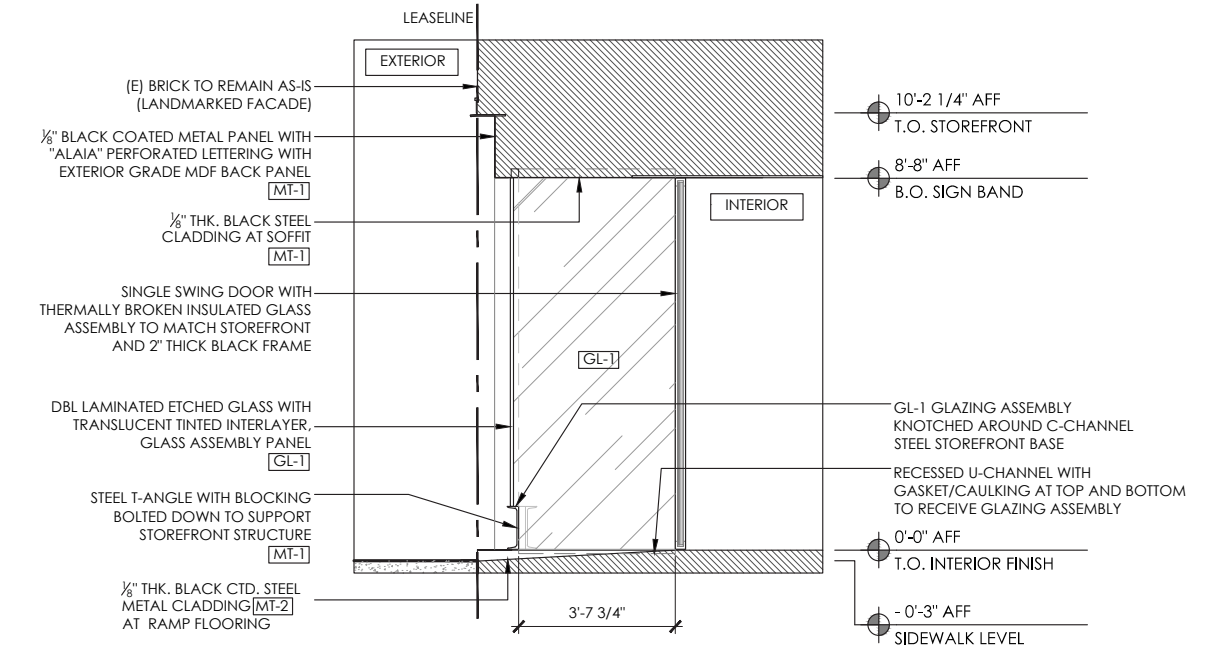
RESIDENTIAL ENTRY DOORS



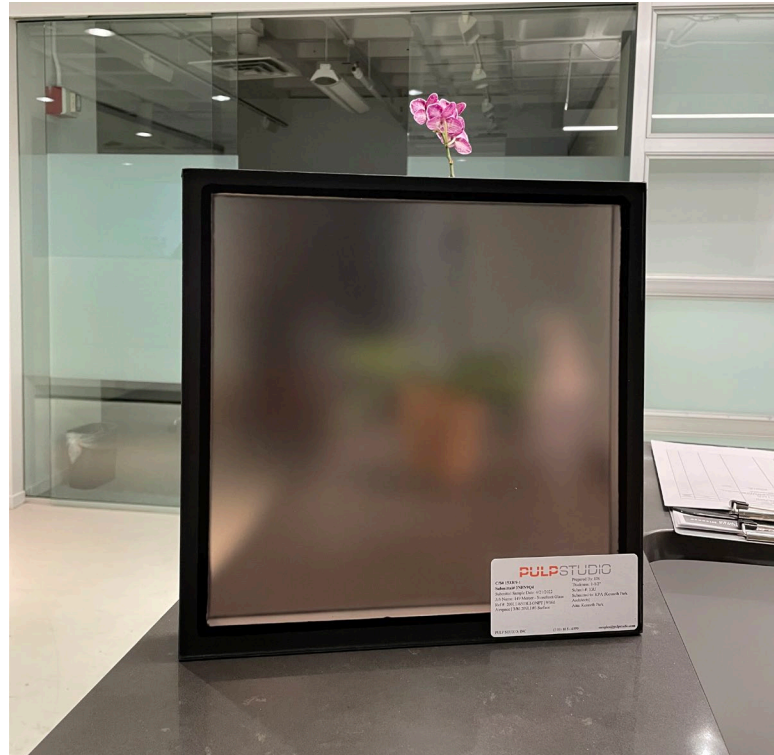
STOREFRONT ENTRY DOOR



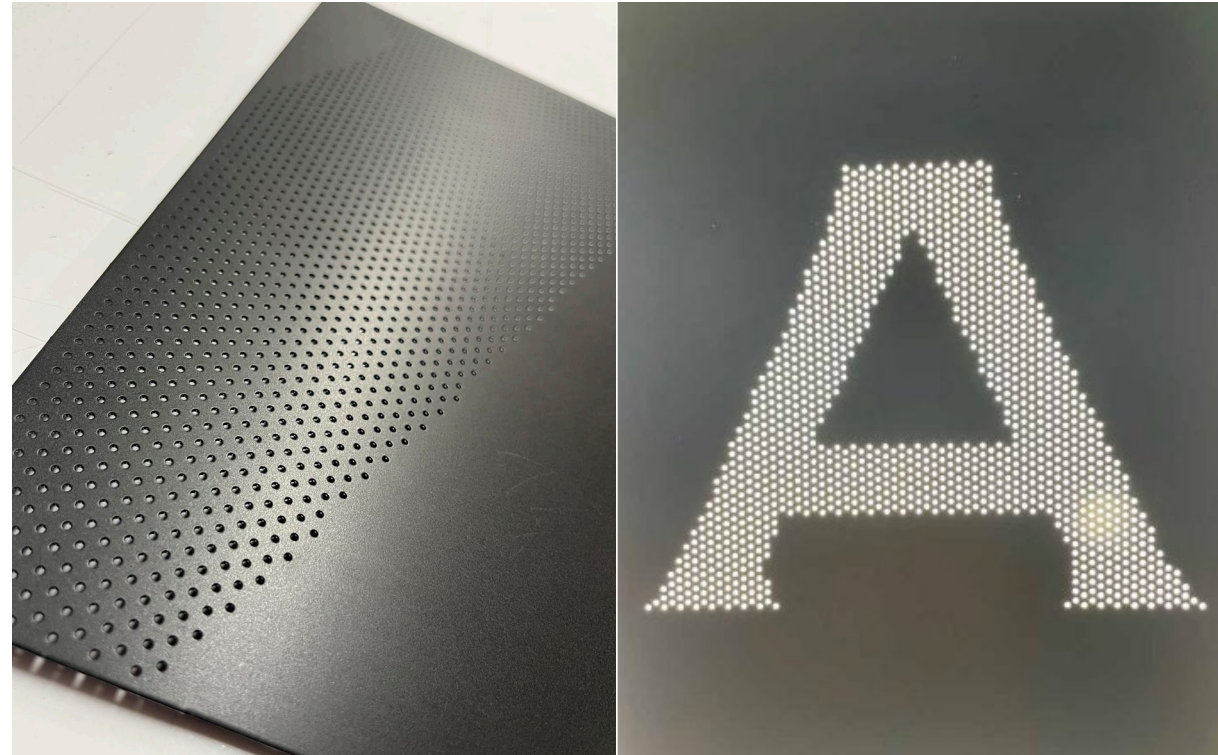
ENTRY VESTIBULE ELEVATION (RIGHT)



ENTRY VESTIBULE ELEVATION (LEFT)



Tinted ("Manila Folder"), textured glazing



Storefront steel & perforated signage steel

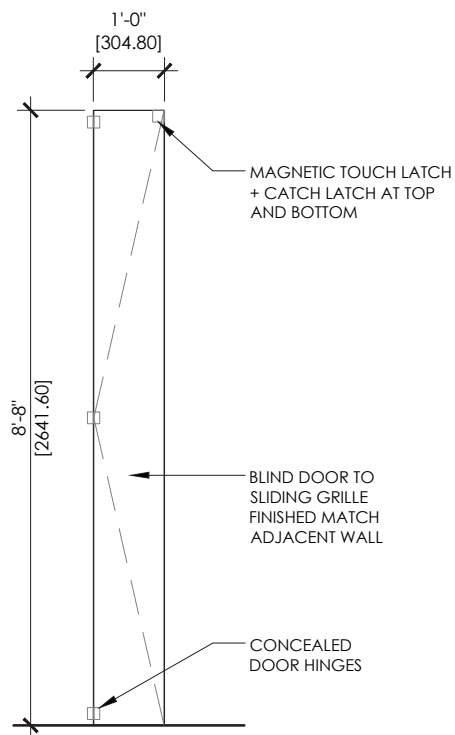


Entry floor sample, textured steel



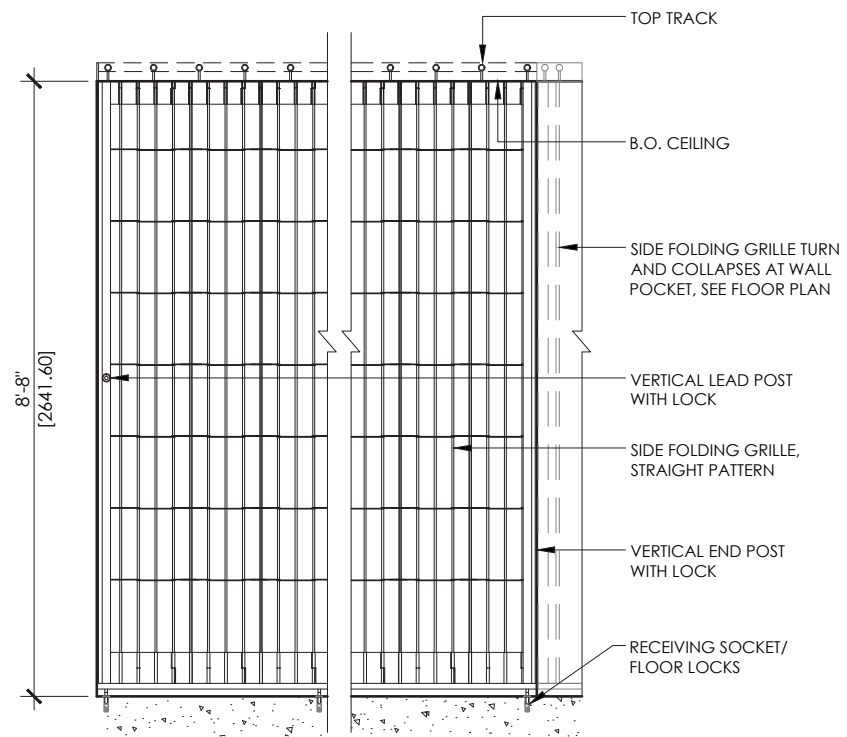
TO BE UPDATED WITH NEW ENTRY DOOR

APPENDIX



HIDDEN DOOR

D



SECURITY GRILLE ELEVATION

C



