

SOHO CAST IRON HISTORIC DISTRICT MAP



EXISTING PHOTO OF CONDITION TODAY



EXISTING VIEW



EXISTING VIEW WITH PROPOSED TORY BURCH PAINTED SIGN



43-45 WOOSTER STREET
ca. 1917 (NYHS)



PRINCE STREET AT GREEN STREET
ca. 1975 (MCNY)



PRINCE STREET AT CROSBY STREET
ca. 1925 (NYPL)



WEST BROADWAY AT PRINCE STREET
ca. 1939 (NYPL)

SOHO - HISTORIC PAINTED WALL SIGNS



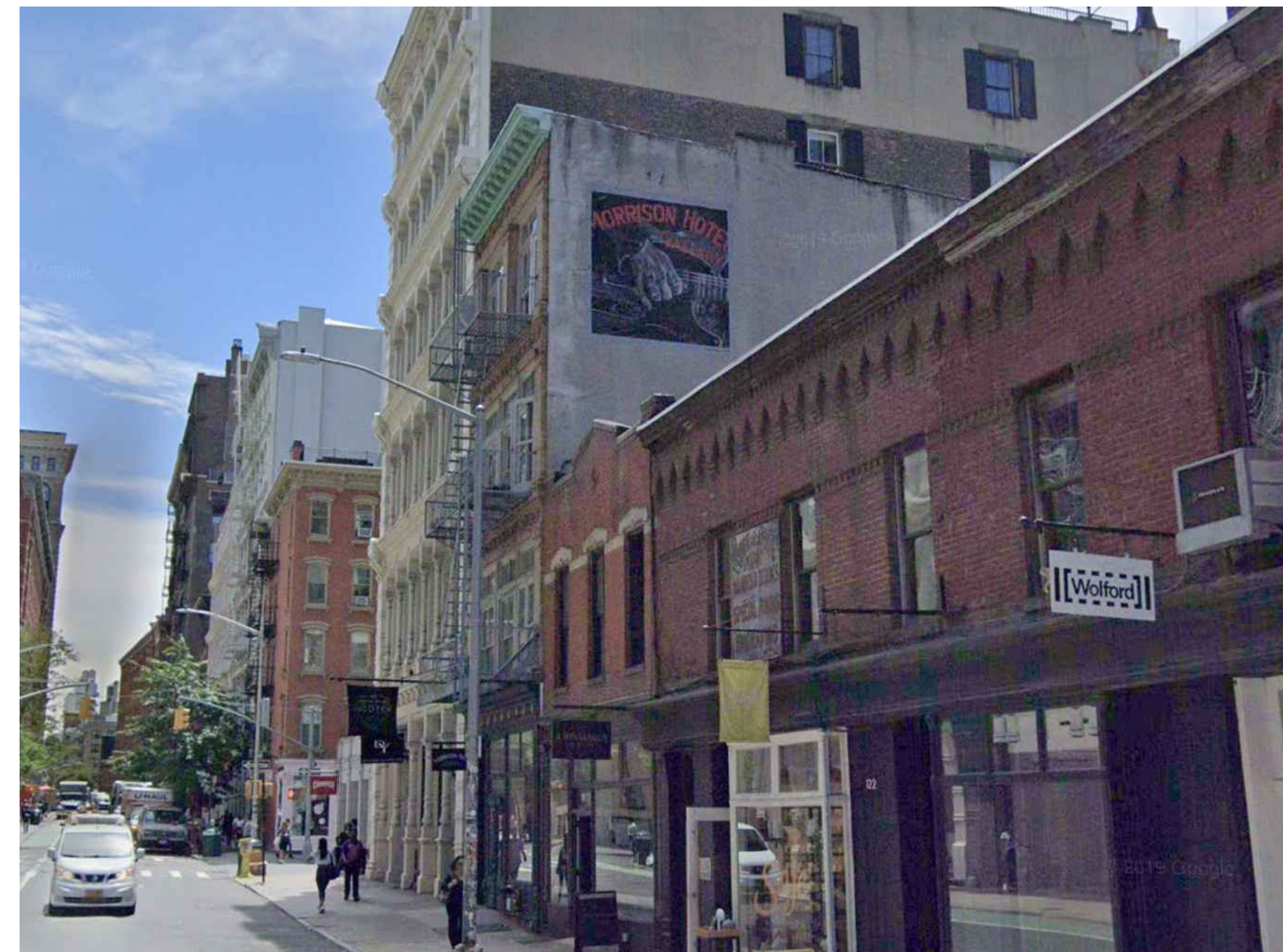
83 WOOSTER STREET



475 WEST BROADWAY



109 SPRING STREET

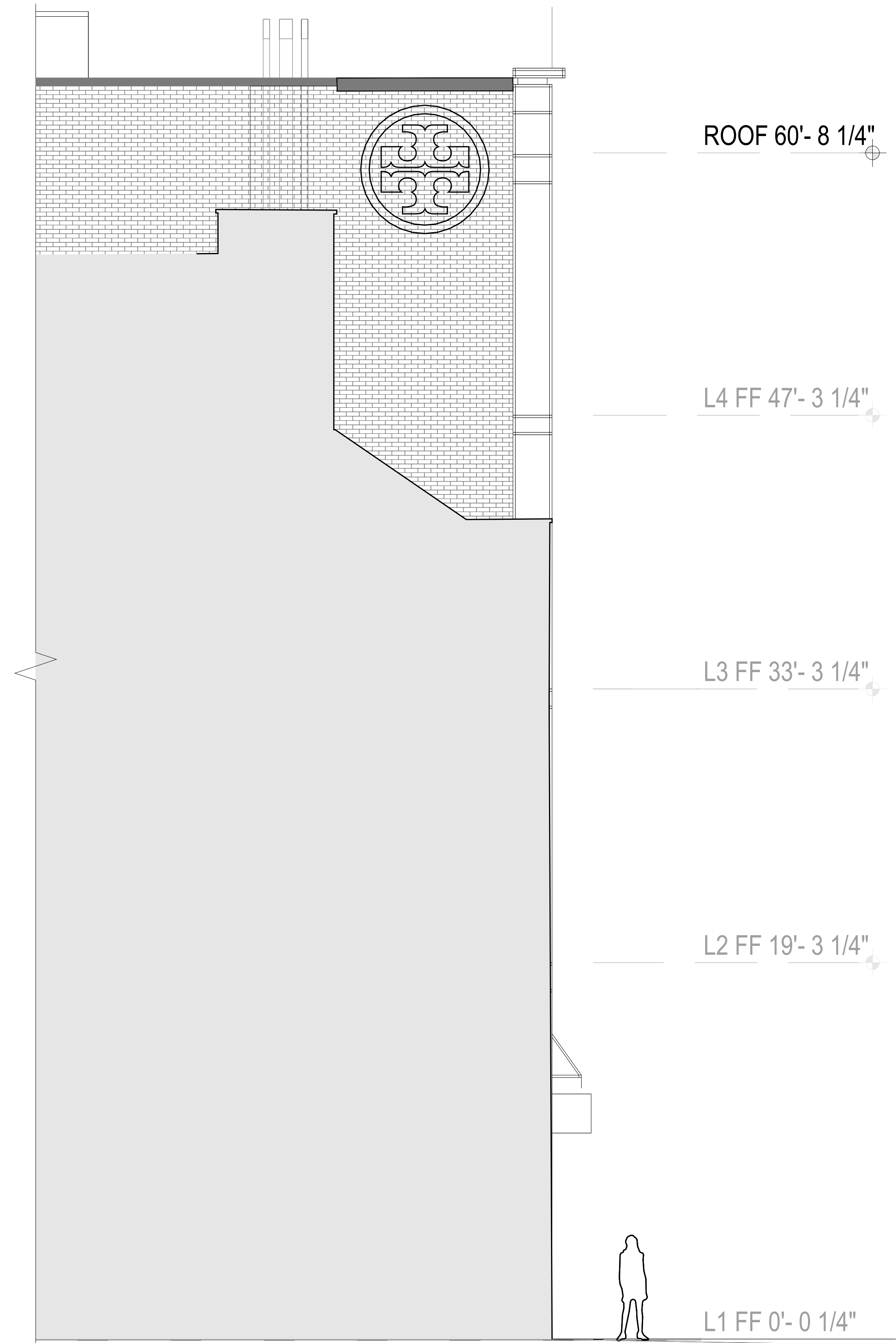


120 PRINCE STREET

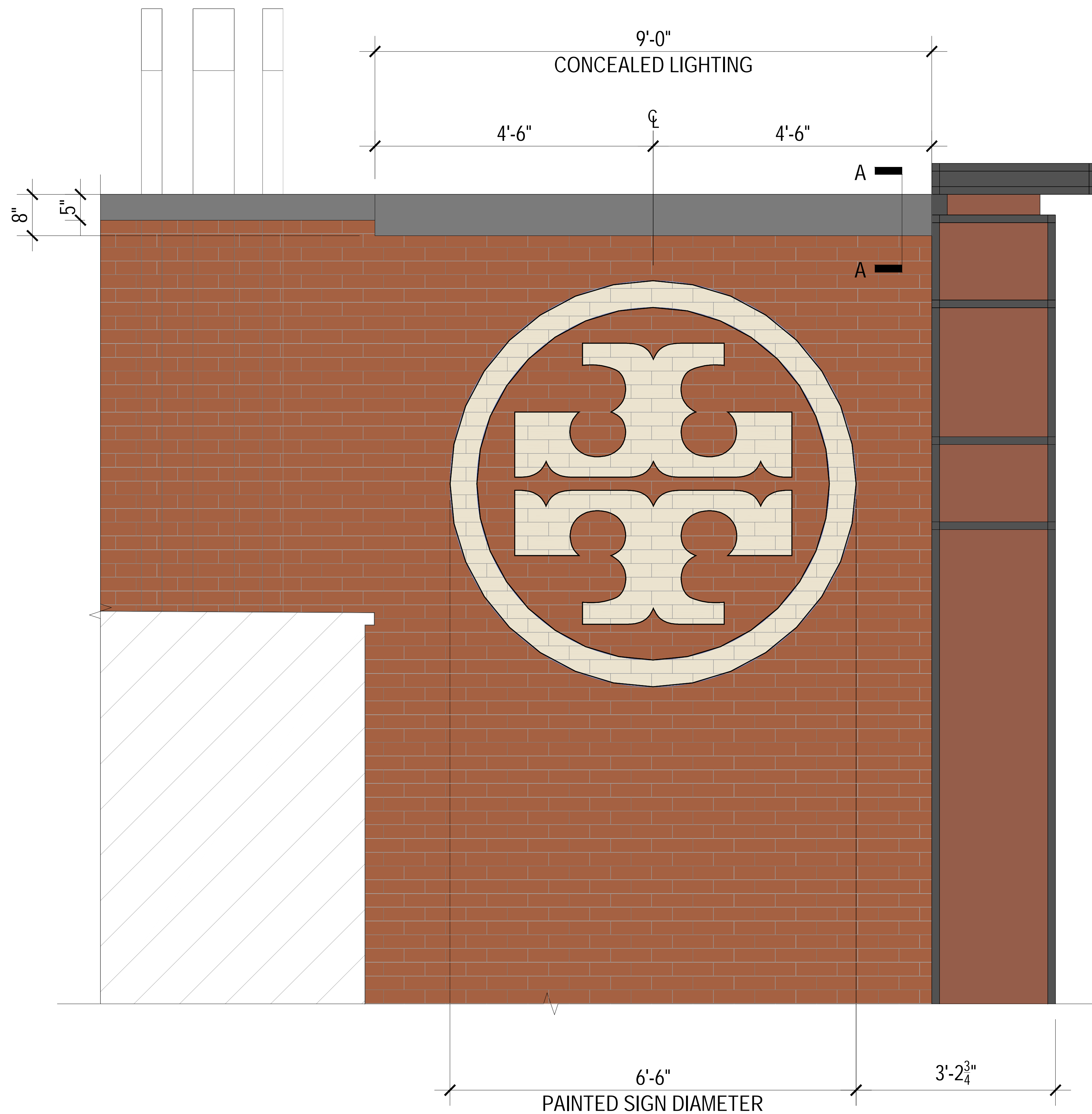
LPC APPROVED PAINTED WALL SIGNS



EXISTING VIEW WITH PROPOSED TORY BURCH PAINTED SIGN



EXISTING SIDE FACADE WITH PROPOSED TORY BURCH PAINTED SIGN



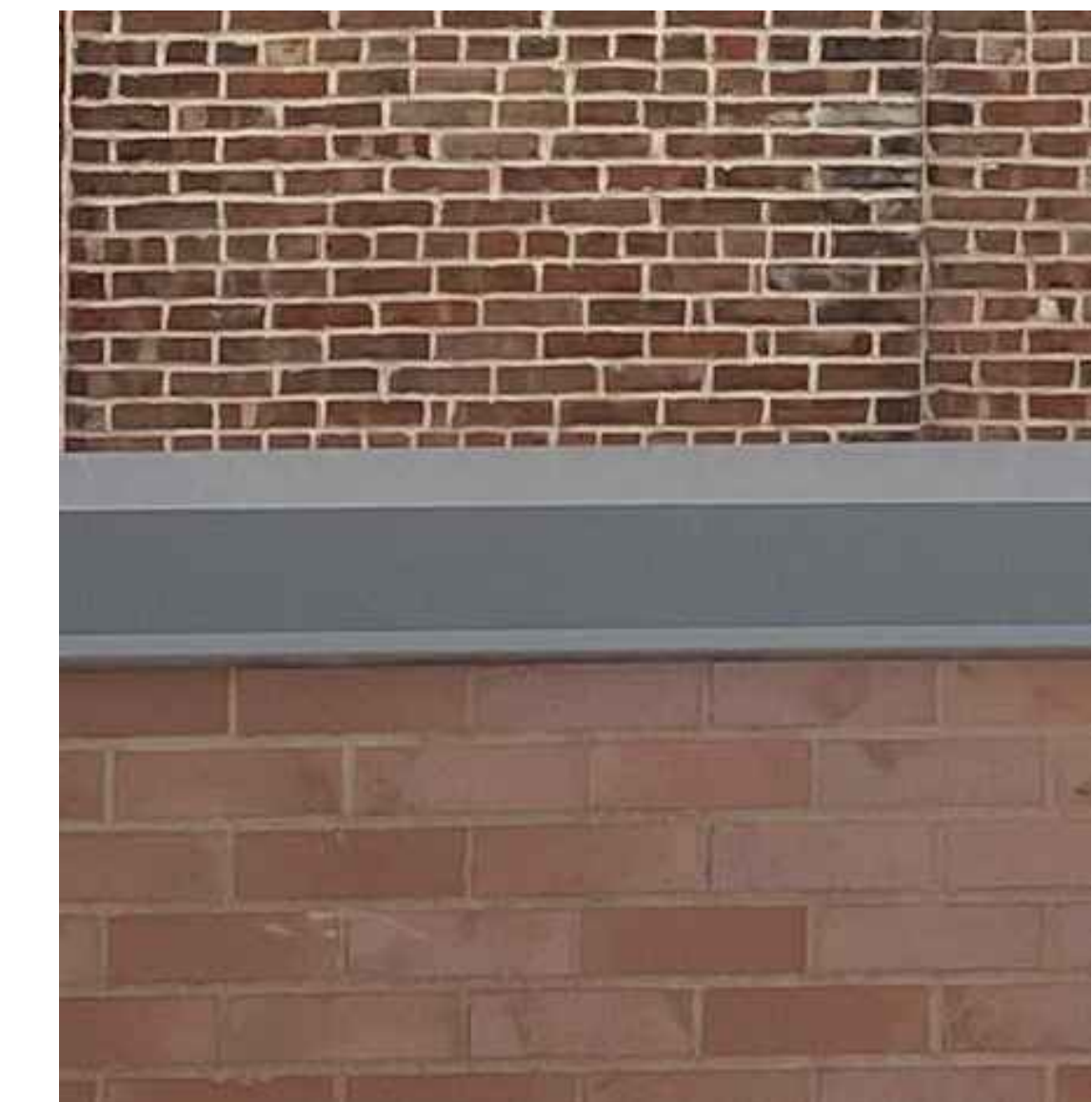
ENLARGED SIDE FACADE WITH PROPOSED TORY BURCH PAINTED SIGN RENDERING



METAL COVE POWDER COAT FINISH |
GRAY TO MATCH EXISTING COPING
FINISH



SIGN PAINT |
IVORY COLOR - BENJAMIN MOORE
ALBESCENT -OC-40



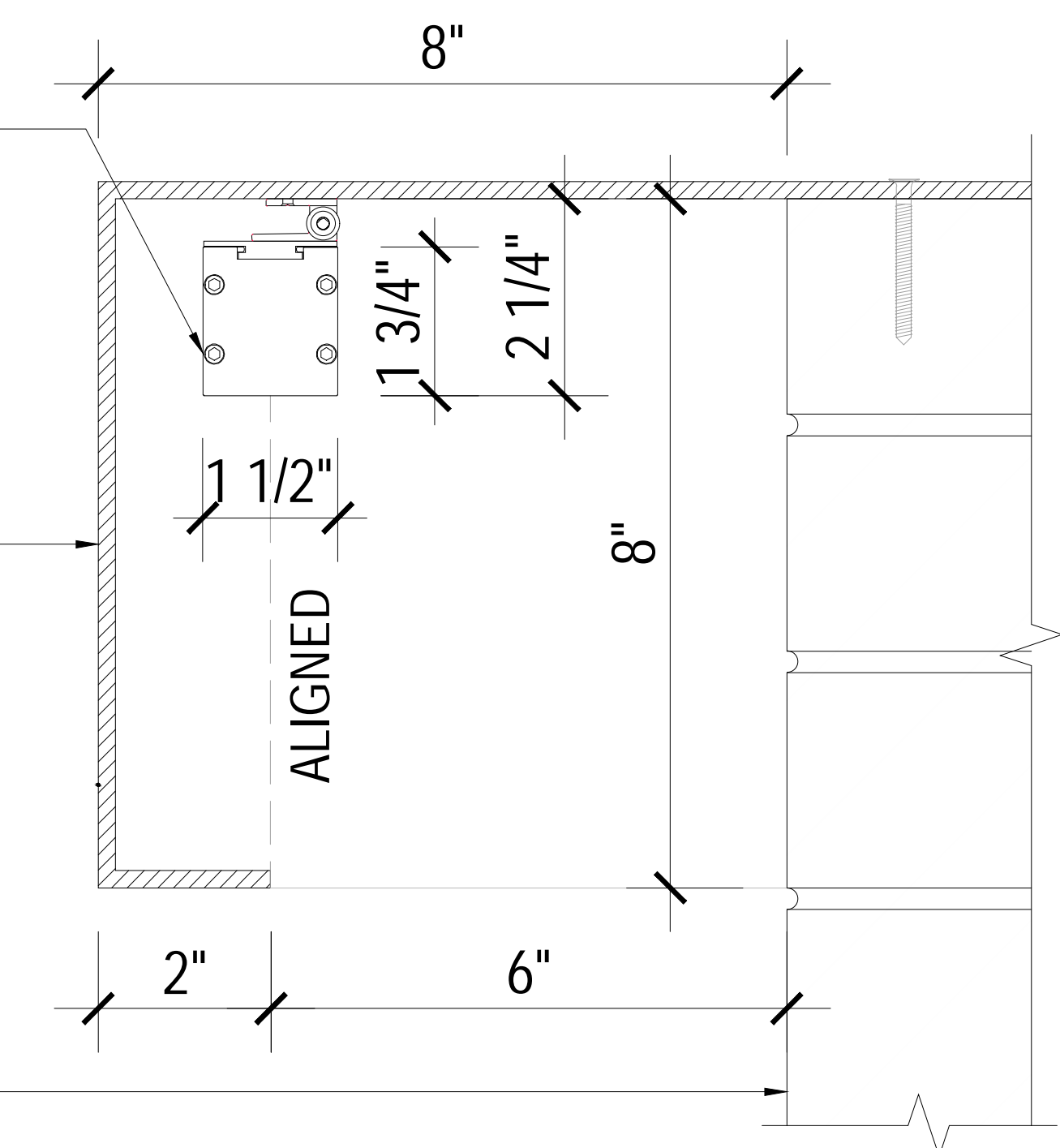
EXISTING COPING FINISH

PROPOSED TORY BURCH PAINTED SIGN FINISHES

Linear grazing light for exterior area:
KKDC SEN 035 or similar fixture
67.2W/m. 4000k. IP67 rated clear
cover, narrow len(10"), with low
adjustable bracket black finish.

Metal cove for LED concealing:
Matte black finish inside;
Exterior finish painted to match existing
coping.

Existing brick masonry with proposed
painted logo



CONCEALED LIGHTING DETAIL (A-A) AT EXISTING COPING



EXISTING VIEW WITH PROPOSED TORY BURCH PAINTED SIGN