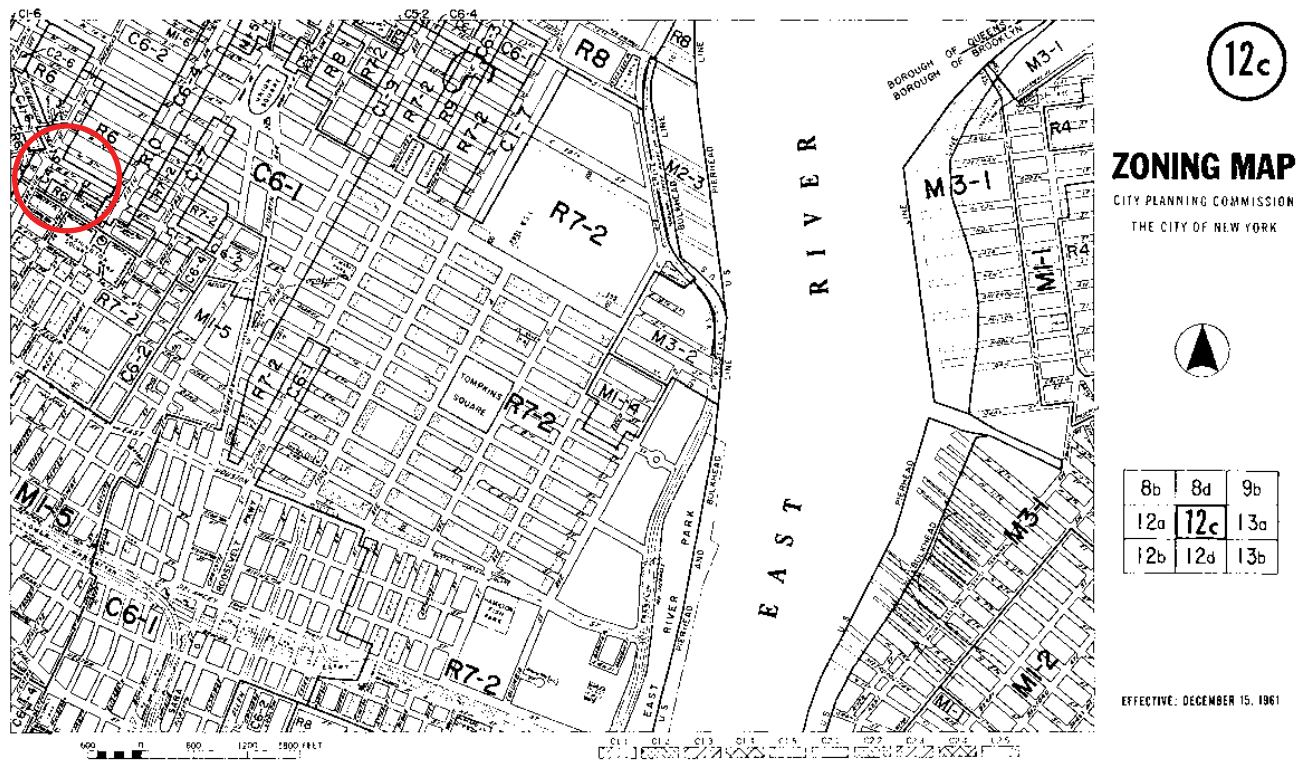




## 66 WEST 9th STREET - NY, NY 10011

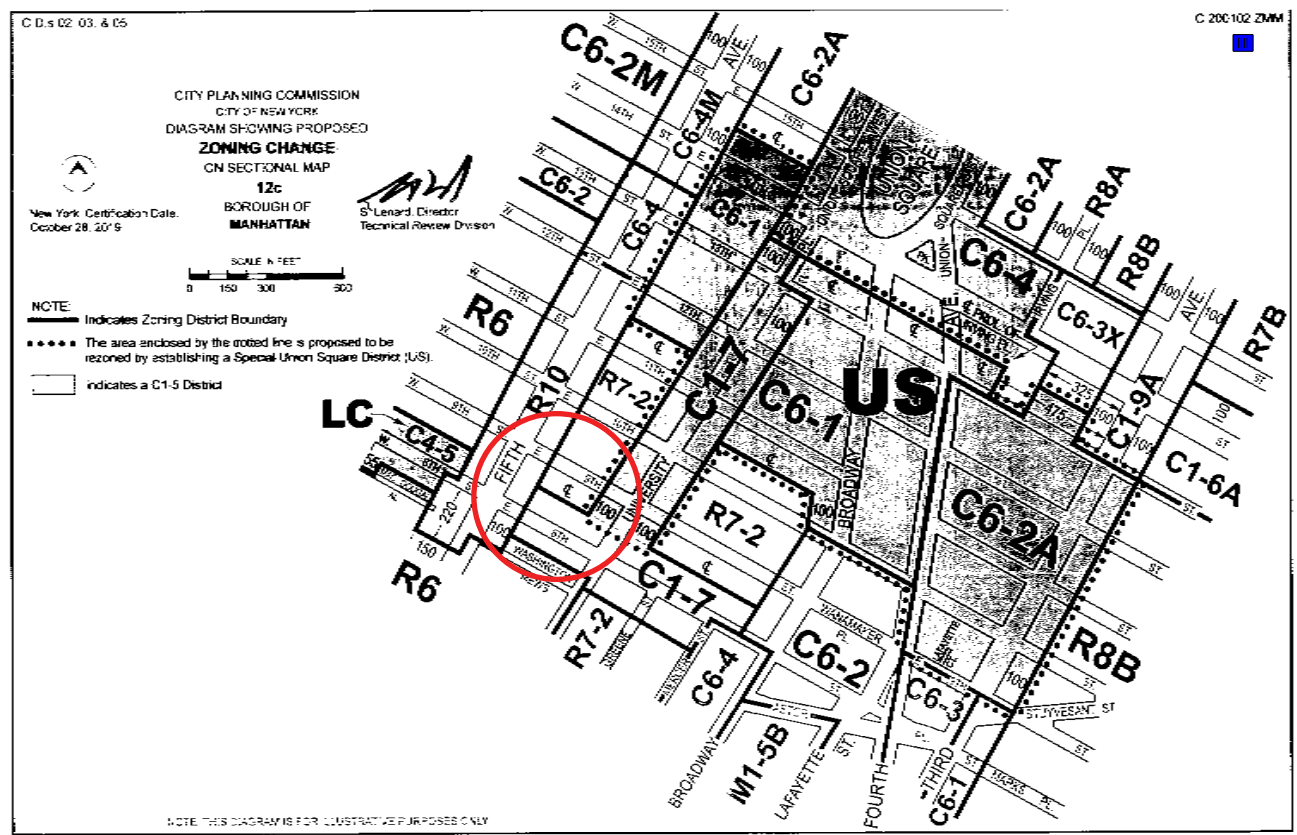
Proposed ADA lift and Stair Alteration  
Landmark Preservation Commission Review

\*For Retail Space A as indicated



Historical Zoning Map

Zoning Map



Zoning Map Detail



Landmarks Map



1965/66 View of West 9th Street



Detail View of 66 West 9th Street

\* Photo credit: John Barrington Bayley, LPC Deputy Director - photo dates from around 1965-1966. It's the LPC Greenwich Village Historic District Designation Photo for the district that was designated in 1969.

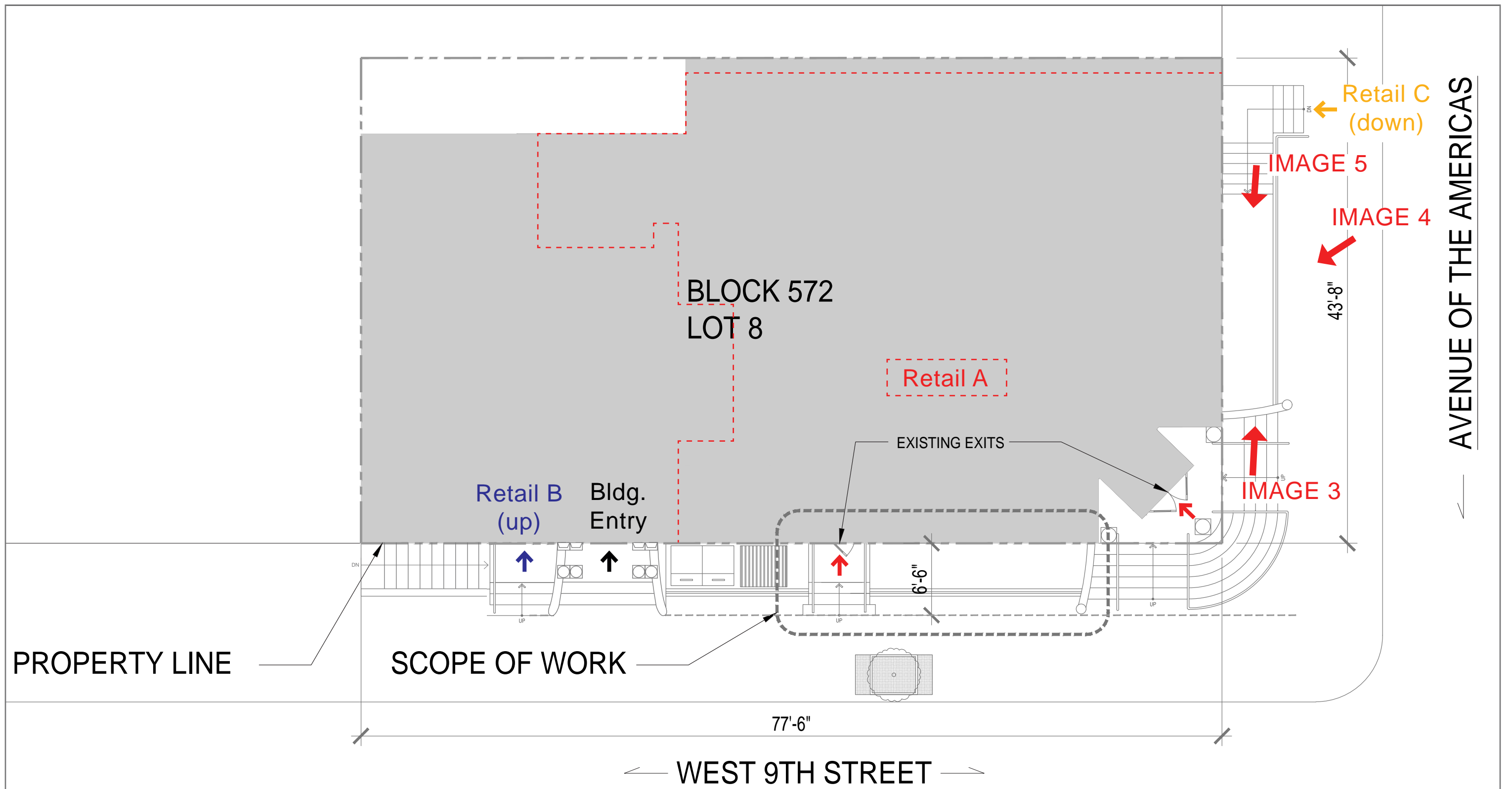
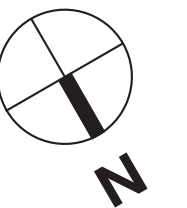
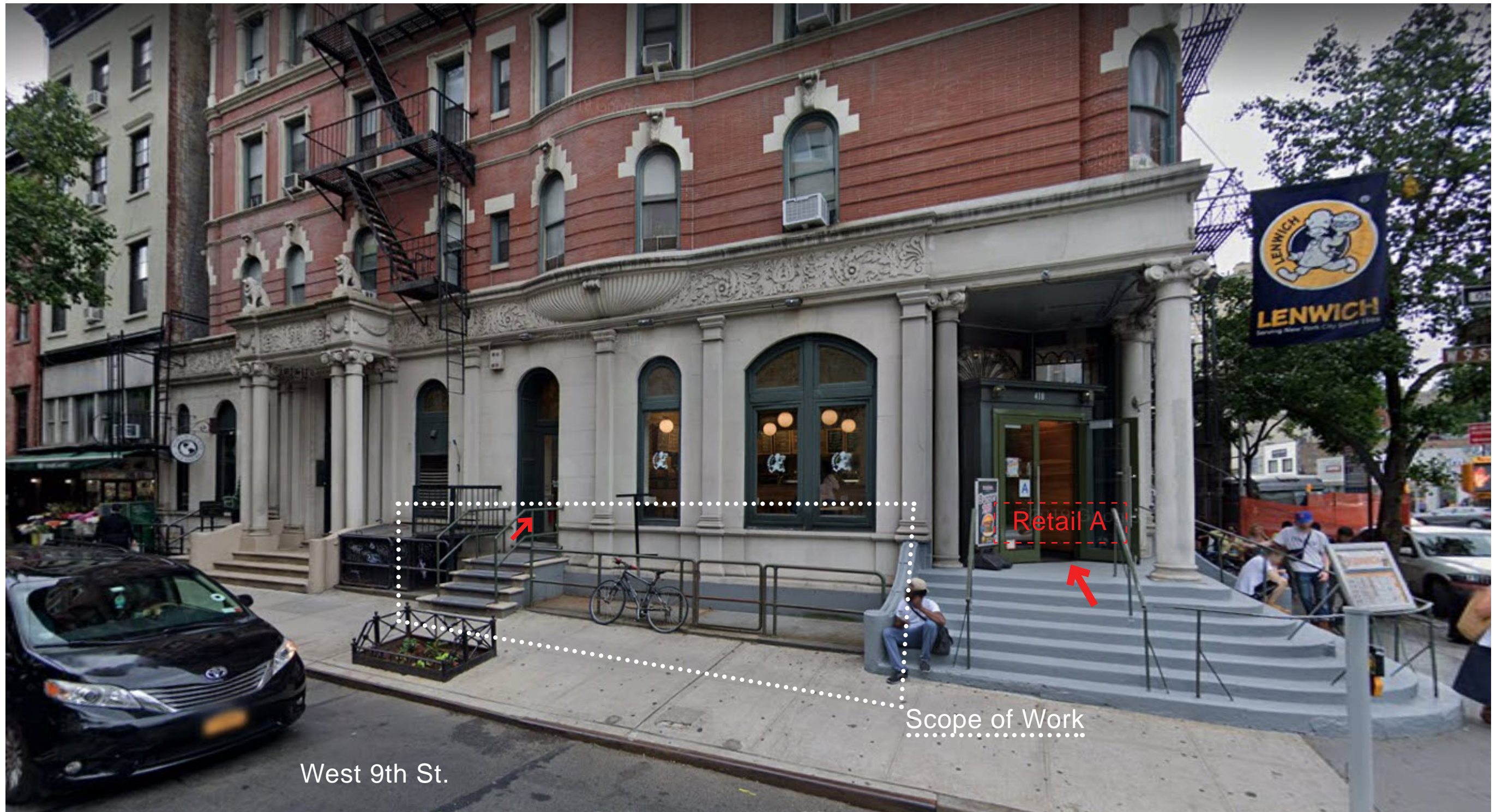


IMAGE 2

IMAGE 1



**SITE PLAN** (not to scale)



West 9th St.

IMAGE 1 - view on West 9th Street

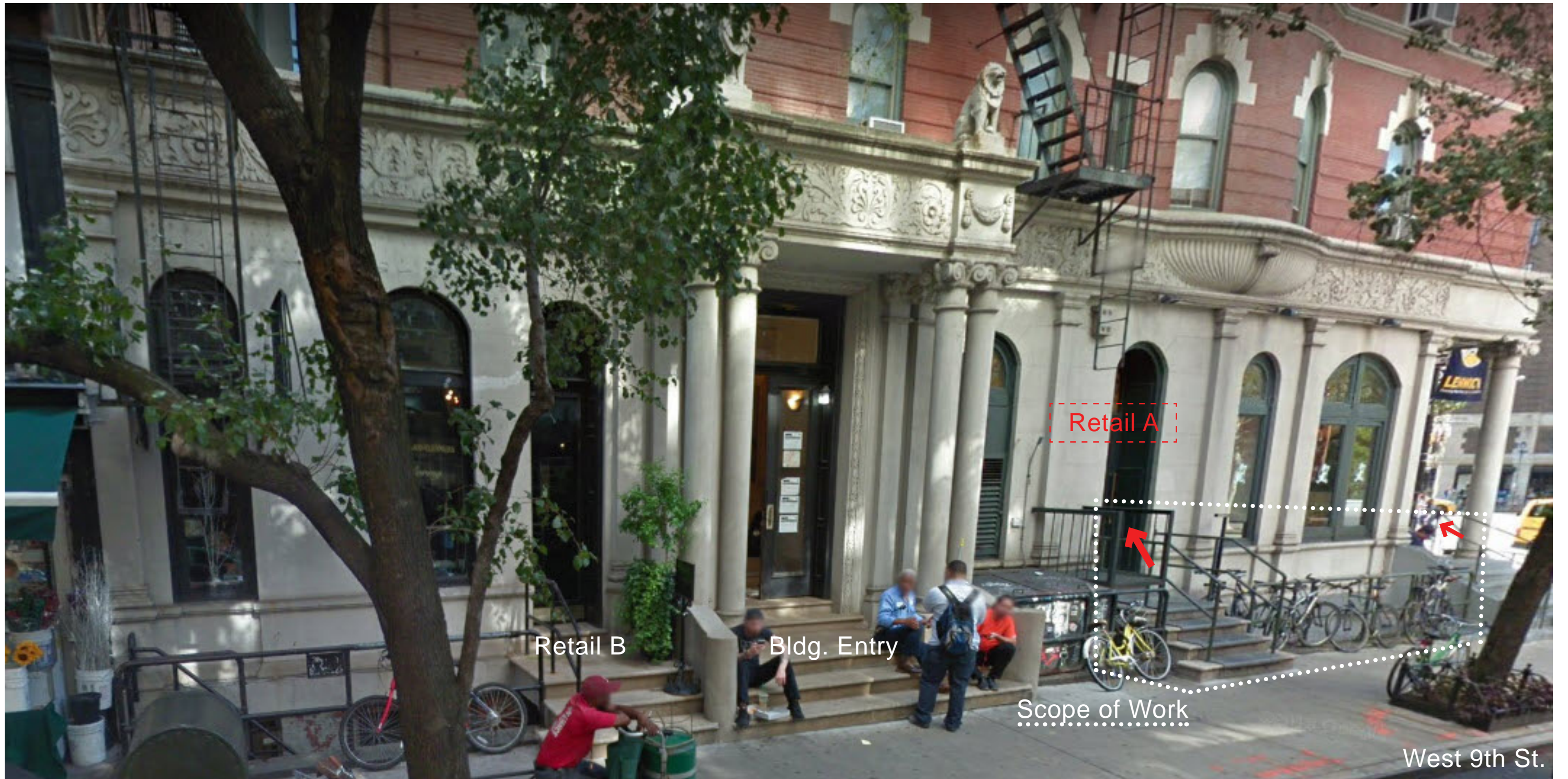


IMAGE 2 - view on West 9th Street



IMAGE 3



IMAGE 4



IMAGE 5

6th AVENUE VIEWS

Existing Diamond Plate on Concrete Treads

5 Existing Steps on Concrete Platform



Existing Line of Encroachment

Existing Rail on Vault Wall

Existing Diamond Plate at Base of Stone Wall



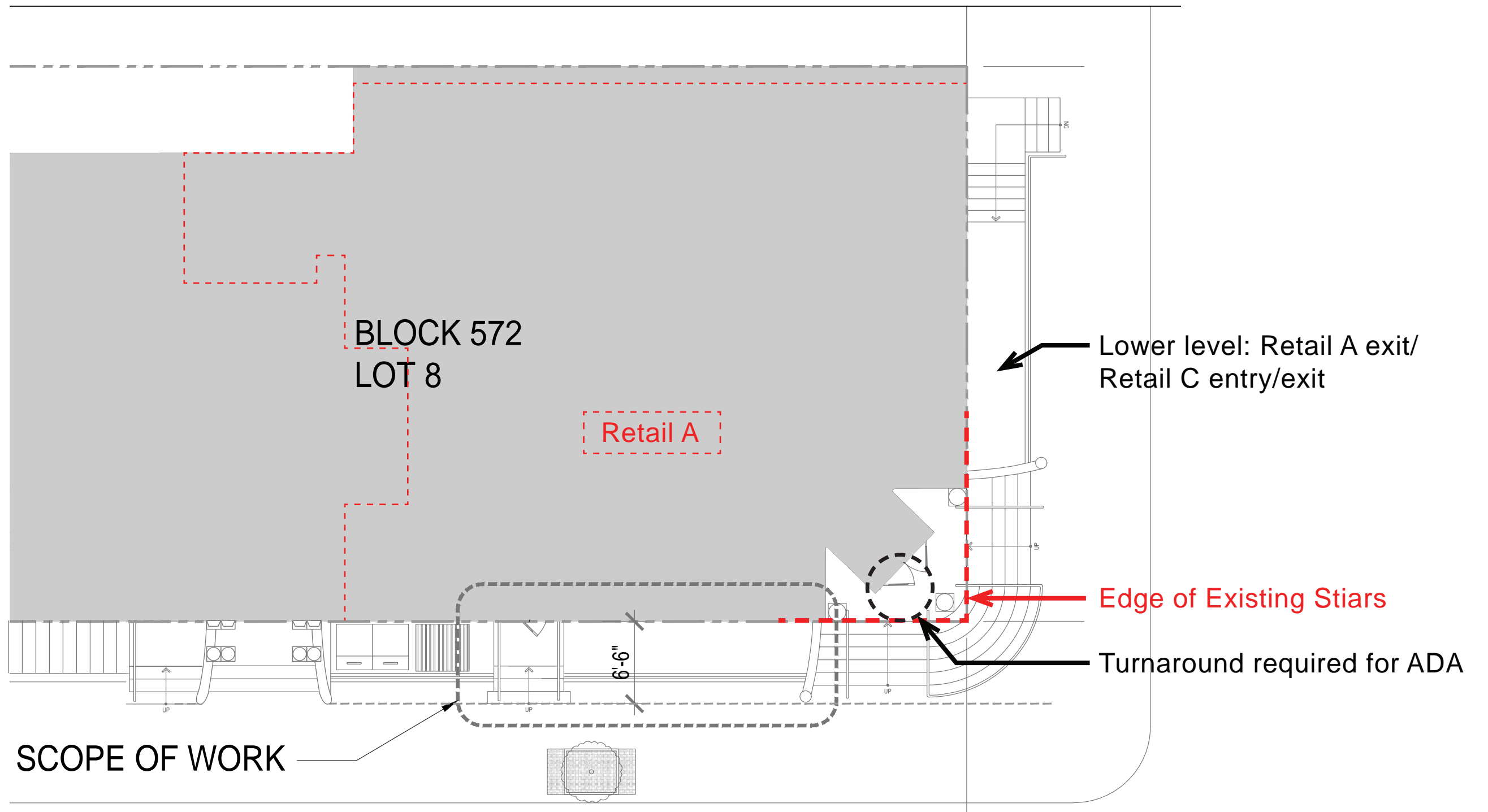
Existing Diamond Plate on Vault



2" Elevation Change at Threshold

# IMAGES AT EXISTING STAIR





BLOCK 572  
LOT 8

Retail A

Lower level: Retail A exit/  
Retail C entry/exit

Edge of Existing Stairs

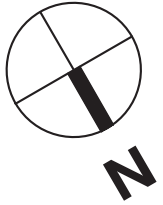
Turnaround required for ADA

SCOPE OF WORK

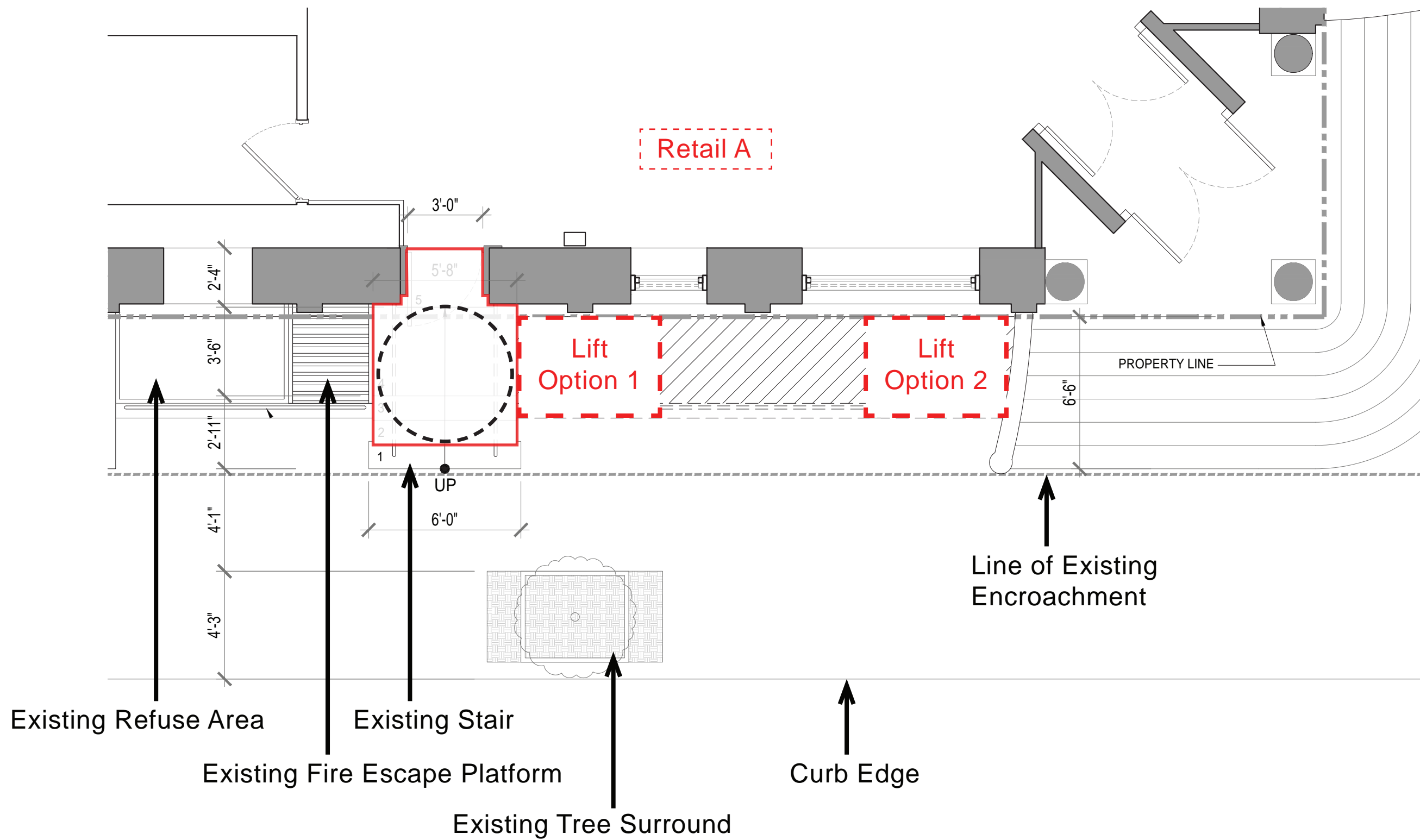
6'-6"

50'-0"

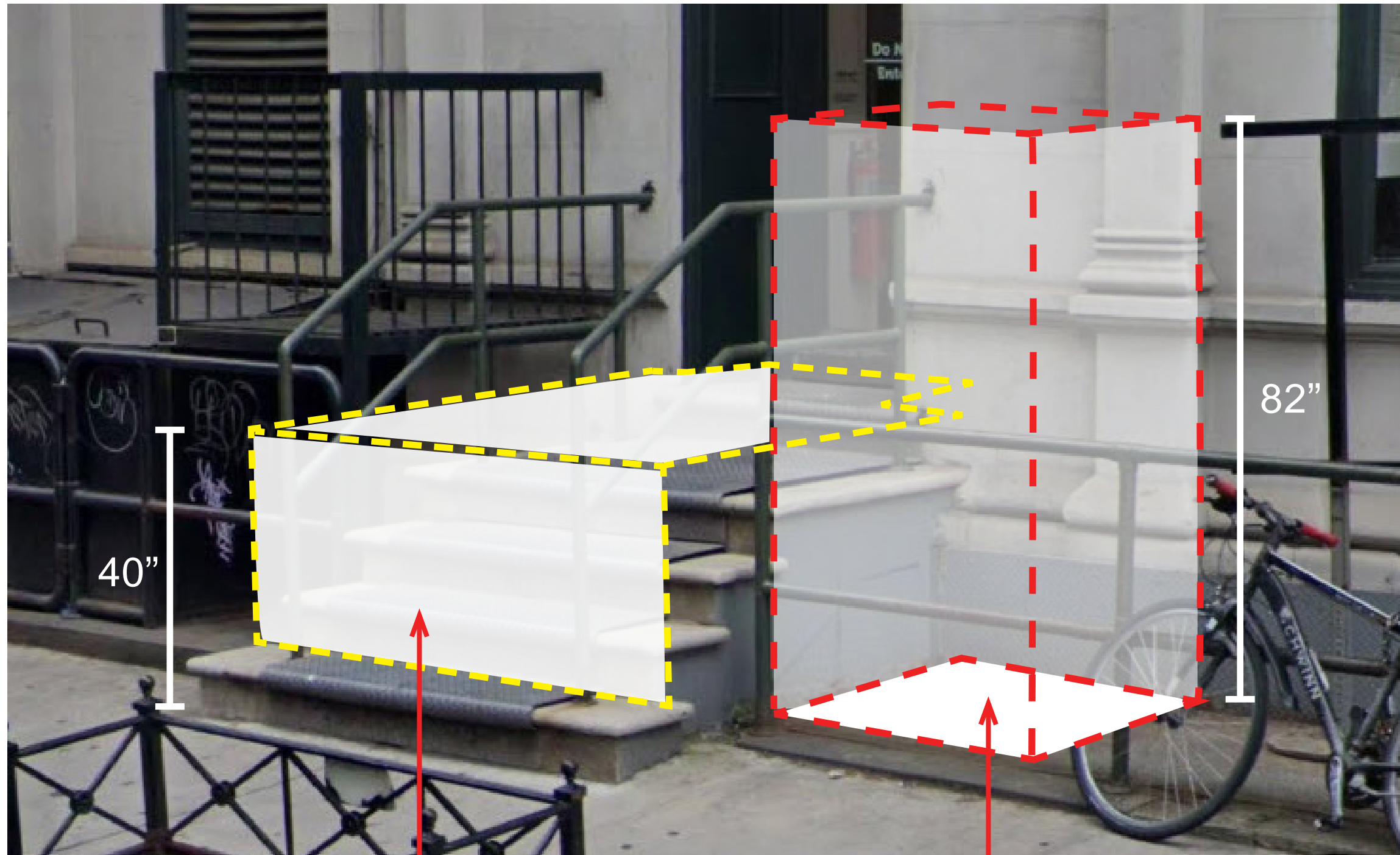
\* Ramp length range required  
45' to 58'



SITE PLAN - ADA Turning Options/Ramp



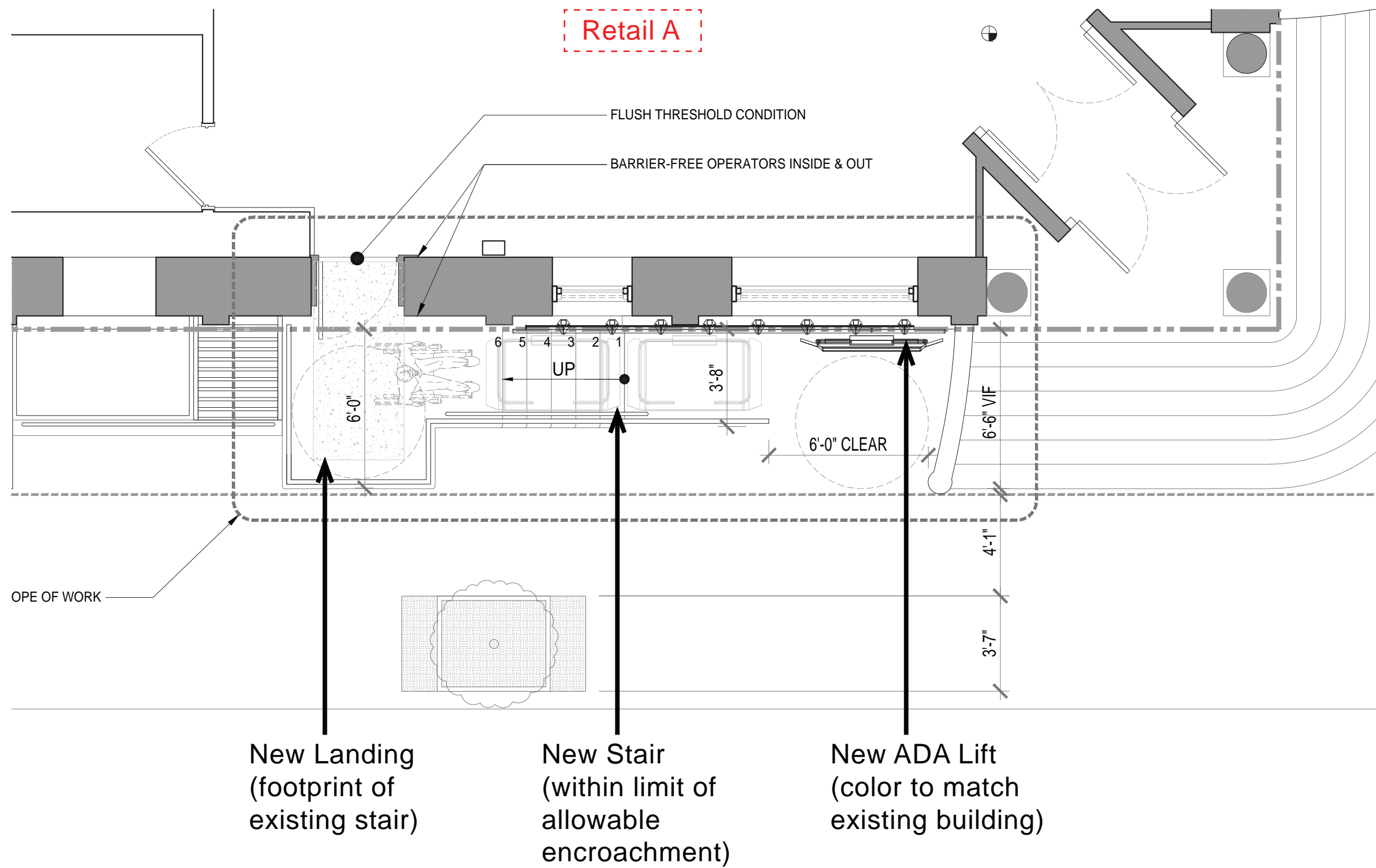
EXISTING PLAN - Investigation with ADA Lift Options 1 & 2



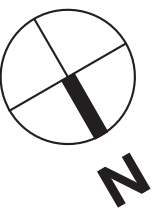
Raised Landing for Lift Options 1 & 2  
(Stair cut off - Landing needs 60"min  
for ADA turnaround)

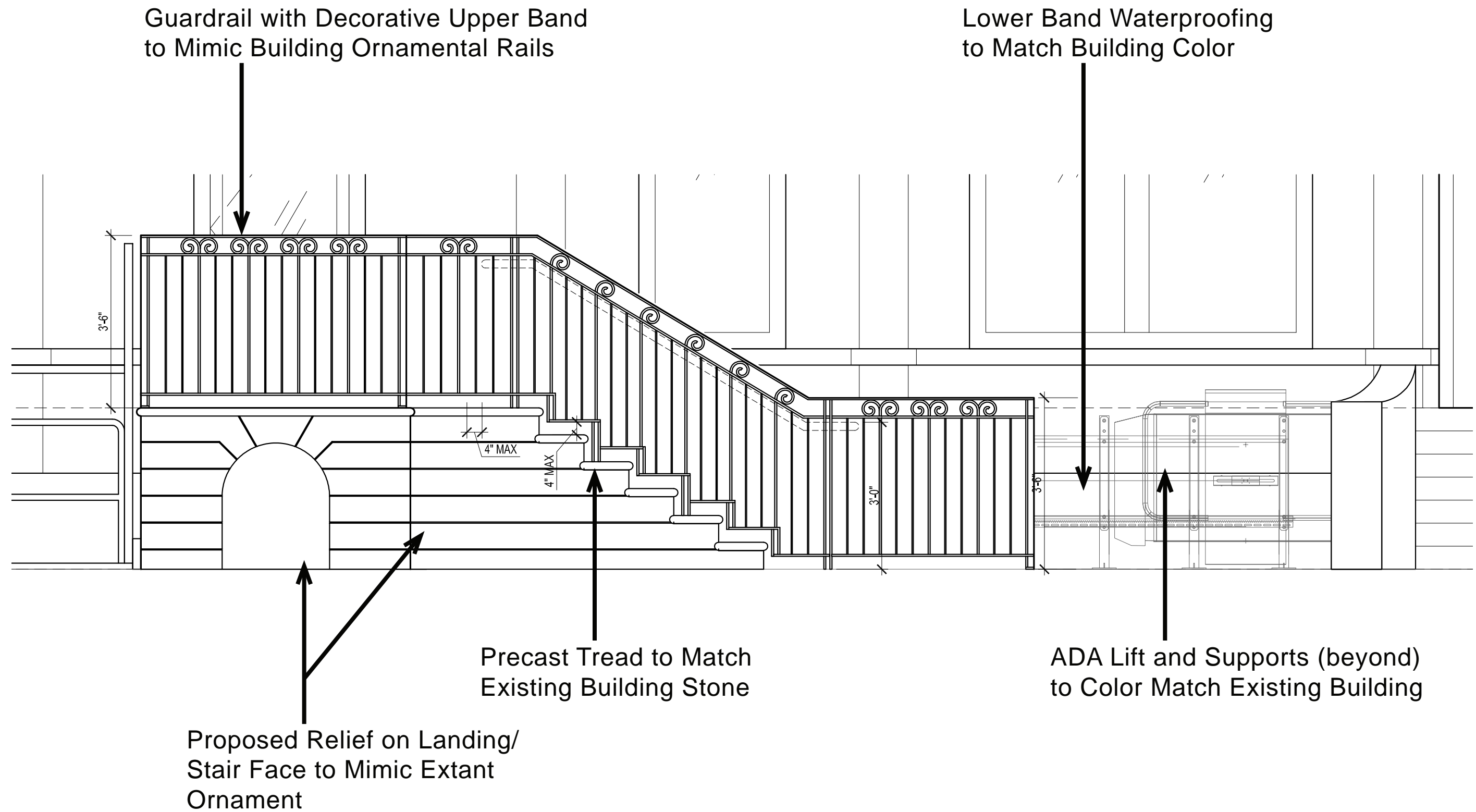
Lift Footprint

## EXISTING LANDING with LIFT OPTIONS



# PROPOSED PLAN

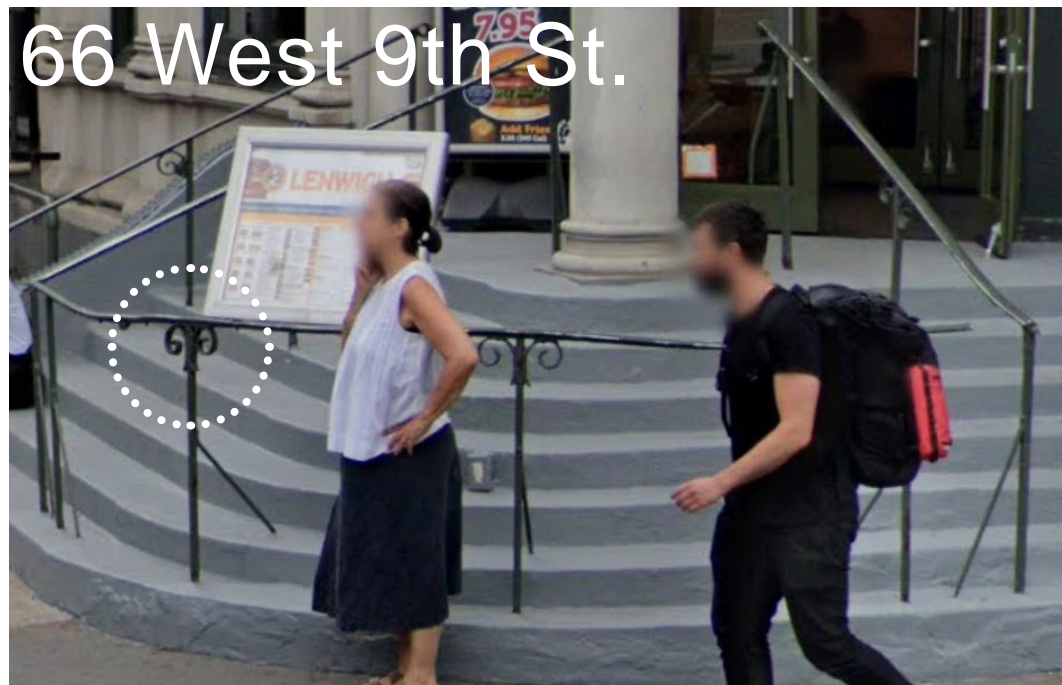




# PROPOSED ELEVATION



66 West 9th St.



66 West 9th St.



60 West 9th St.



43 West 9th St.

# RAILING PRECEDENTS



EXISTING BUILDING IMAGE



PROPOSED RENDERING