

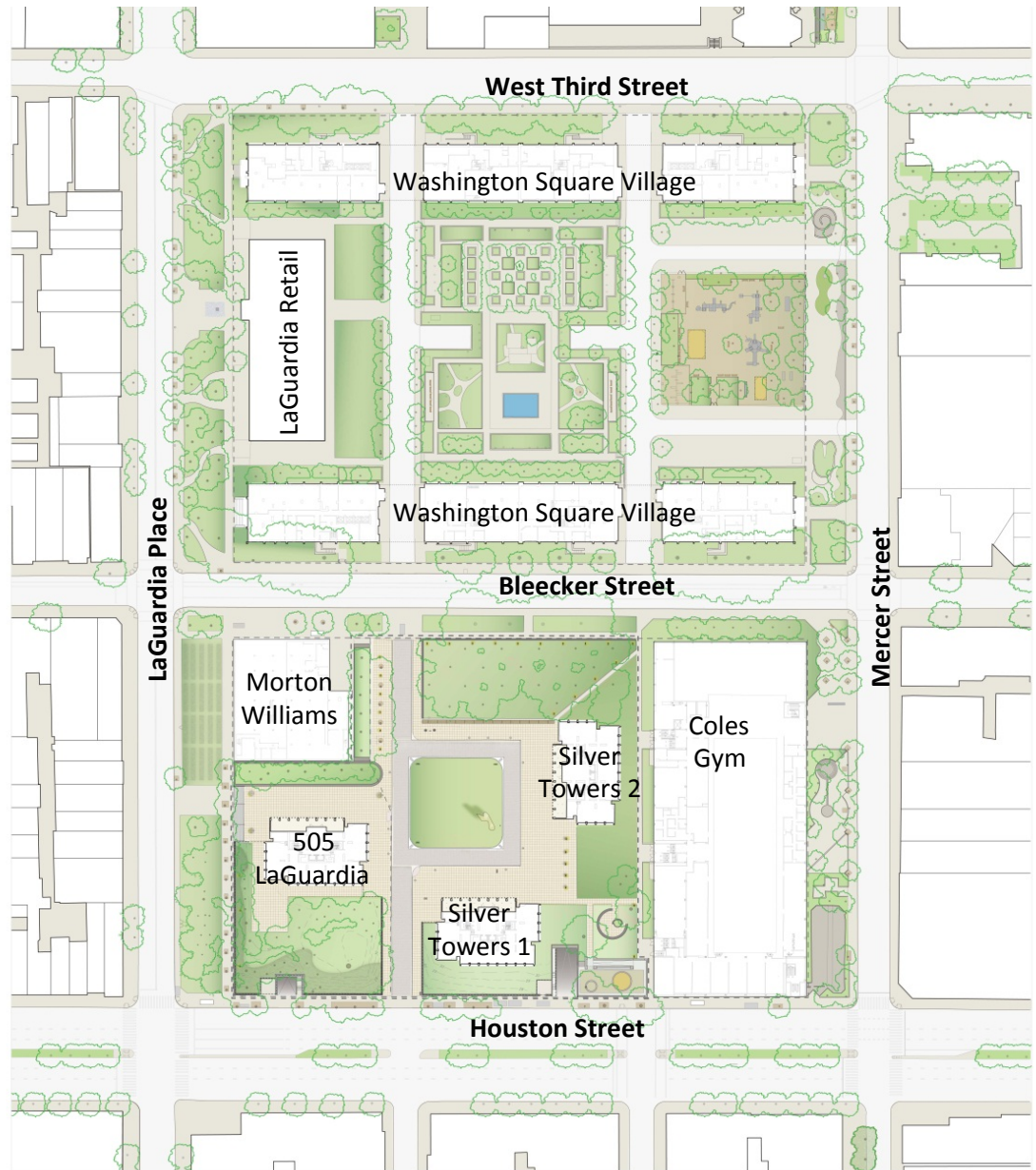


NYU CORE Public School Presentation

Prepared for Community Board 2
January 17, 2012



Existing Conditions



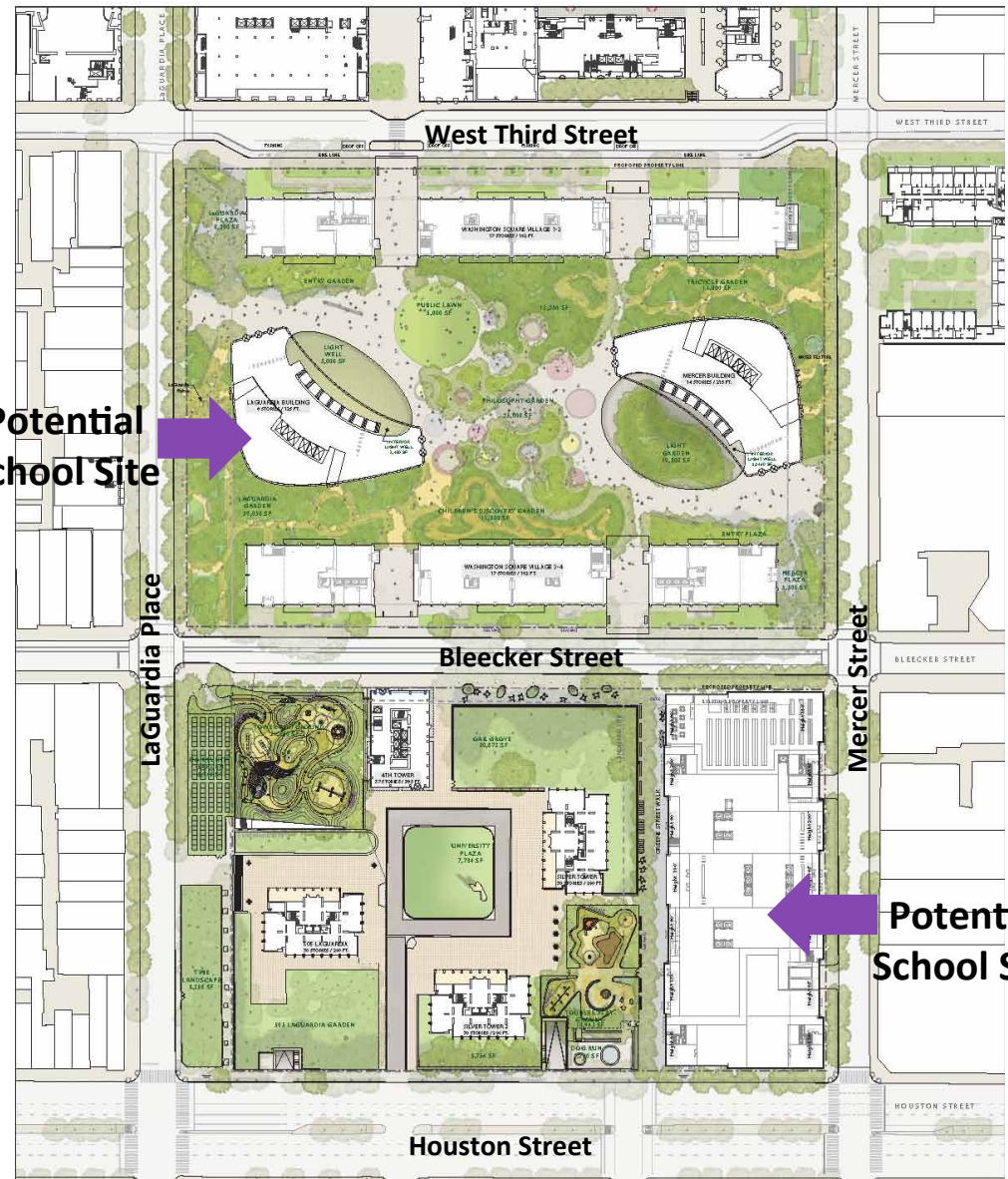


Prior Proposed Site Plan (with Tower Proposal)

Public School Location

- Potential location as part of Zipper Building
- Potential location as part of LaGuardia Building

Potential
School Site



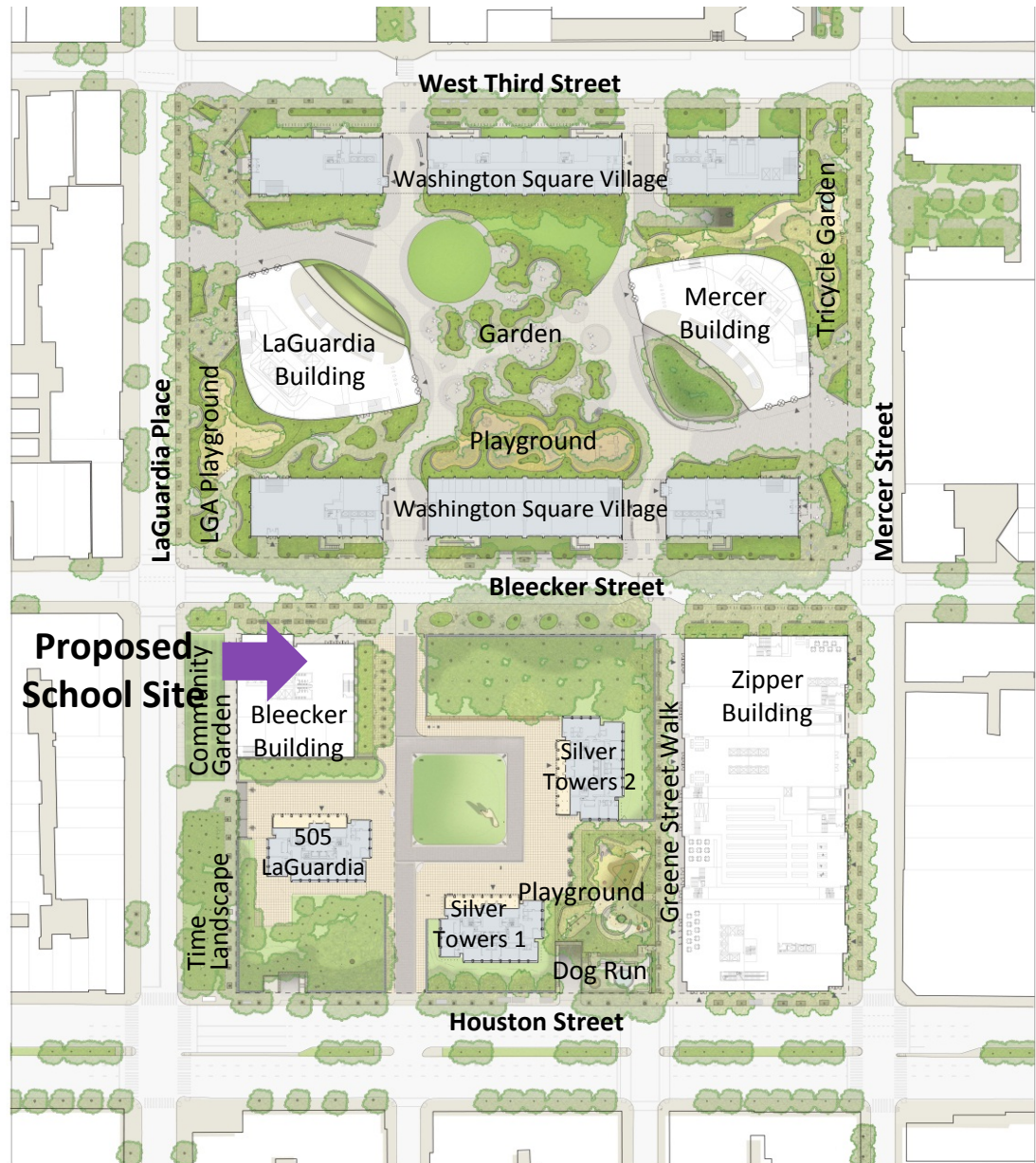
Potential
School Site



Current Site Plan

Public School Location

- Located in Bleecker Building
- Part of mixed use building with NYU academic space in basement and NYU dorm above





DEIS - Proposal for Public School

Public School Assumptions

- Location in Bleecker Building
- 100,000 GSF for public school
- Approximately 650 K-8 grade students
- Rooftop play area (7,680 SF)

Phasing and Construction

- Assumes Zipper building and replacement grocery market constructed prior to school construction
- Bleecker building construction period 2018-2021
(Other construction periods are possible)
- DEIS Phasing studies NYU academic space as alternative to public school



DEIS - Public School Analysis

NYU Core DEIS Chapter 4 – Community Facilities and Services

Text Excerpted pages 4-3 & 4-4

“As the Proposed Actions would not exceed any of the thresholds set forth in the *CEQR Technical Manual*, the Proposed Actions would not result in any significant adverse impacts on public elementary, middle, or high schools, and a detailed analysis is not warranted.”

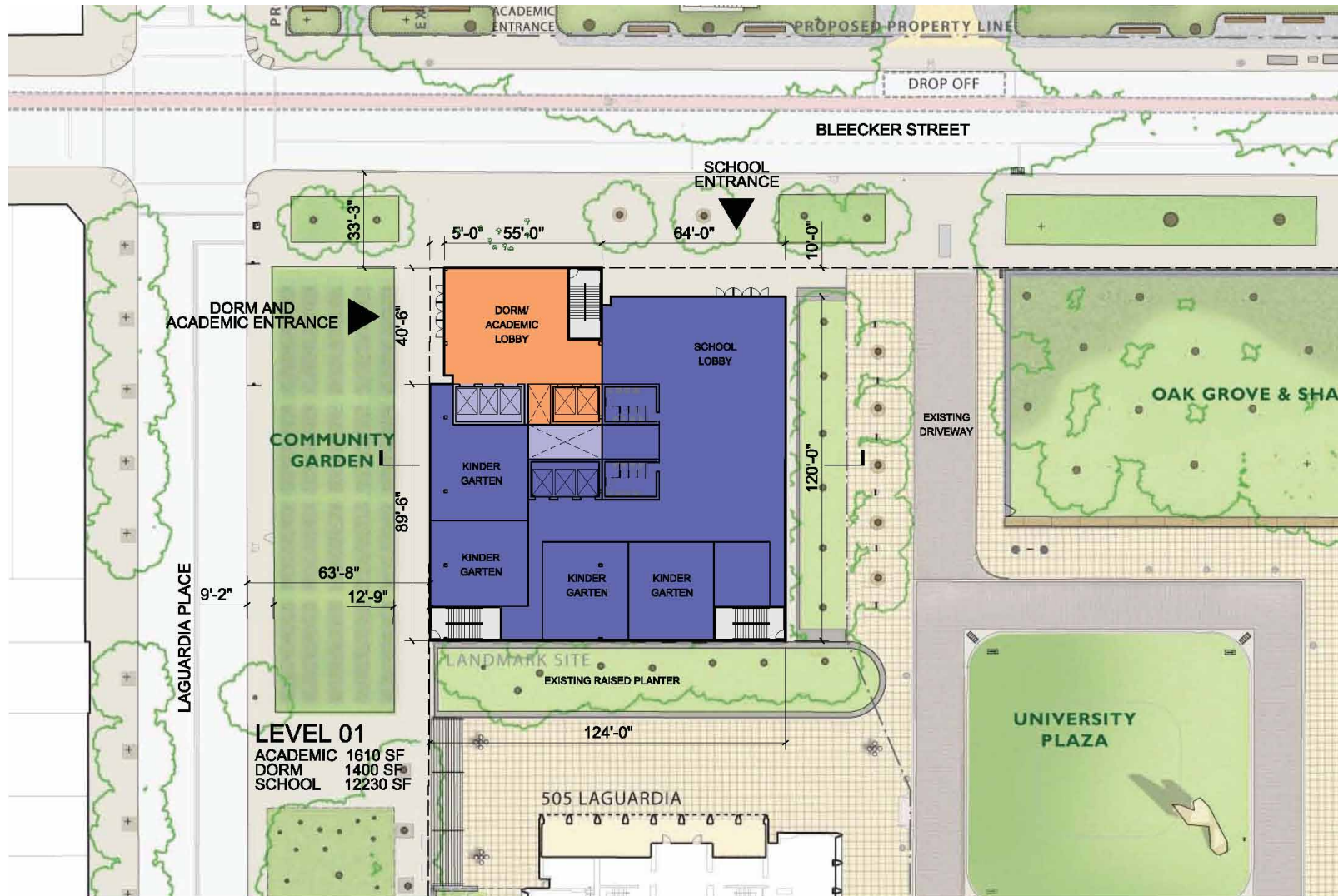


Super Blocks Proposed Conditions





Proposed Bleecker Building - Ground Floor Plan



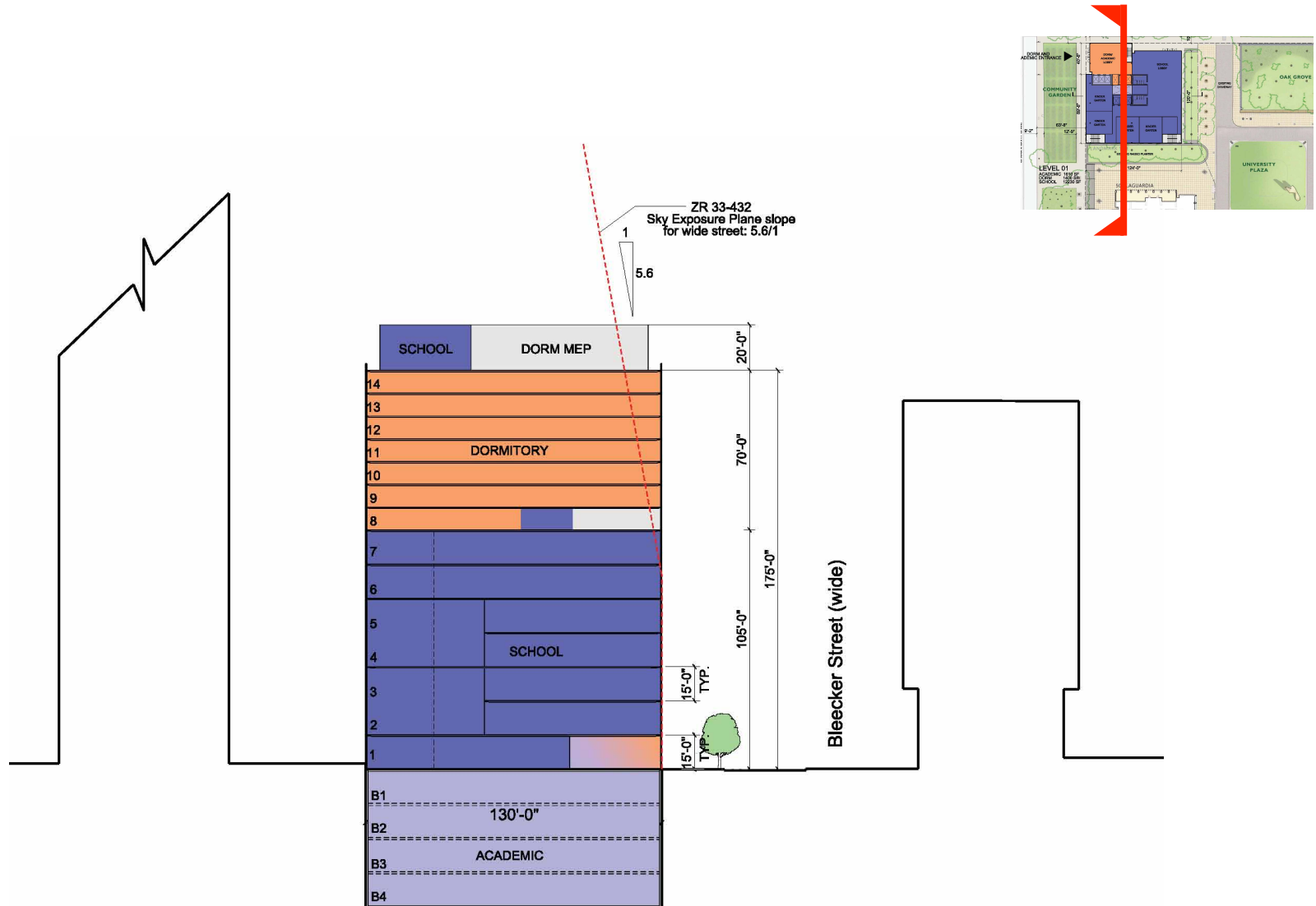


Proposed Bleecker Building - Section (East -West)





Proposed Bleecker Building - Section (North-South)





Proposed Bleecker Building – Eighth Floor





Existing Rooftop Playgrounds



